

123 Surface Profile Gauge

**Elcometer 123**

English

**Surface Profile Gauge**

**Operating Instructions**



elcometer® is a registered trademark of Elcometer Limited.  
All other trademarks acknowledged.

© Copyright Elcometer Limited. 2009.

All rights reserved. No part of this Document may be reproduced, transmitted, transcribed, stored (in a retrieval system or otherwise) or translated into any language, in any form or by any means (electronic, mechanical, magnetic, optical, manual or otherwise) without the prior written permission of Elcometer Limited  
A copy of this Instruction Manual is available for download on our Website via [www.elcometer.com](http://www.elcometer.com).

*Doc.No. TMA-0456 Issue 01  
Text with Cover No: 4280*

elcometer®

## **CONTENTS**

---

<b>Section</b>	<b>Page</b>
<b>1 Introduction</b> .....	<b>2</b>
<b>2 Using a Surface Profile Gauge.</b> .....	<b>3</b>
<b>3 Maintenance</b> .....	<b>4</b>
<b>4 Technical specification.</b> .....	<b>4</b>
<b>5 Spares</b> .....	<b>5</b>
<b>6 Related equipment</b> .....	<b>5</b>

elcometer

Thank you for your purchase of the Elcometer 123 Surface Profile Gauge. Welcome to Elcometer.

Elcometer are world leaders in the design, manufacture and supply of inspection equipment for coatings and concrete. Our products cover all aspects of coating inspection, from development through application to post application inspection.

The Elcometer 123 Surface Profile Gauge is a world beating product. With the purchase of this product you now have access to the worldwide service and support network of Elcometer. For more information visit our website at [www.elcometer.com](http://www.elcometer.com)

## **1 INTRODUCTION**

---

The Elcometer 123 Surface Profile Gauge measures peak-to-valley height of a blast cleaned surface. The average of a series of measurements provides an indication of the surface roughness and allows the surfaces to be compared as blasting proceeds.

### **1.1 STANDARDS**

Your Elcometer 123 Surface Profile Gauge can be used in accordance with the following National and International Standards: ASTM D 4417-B, SANS 5772, US Navy NSI 009-32, US Navy PPI 63101-000.

### **1.2 WHAT THE BOX CONTAINS**

- Elcometer 123 Surface Profile Gauge
- Glass slide
- 2mm allen key
- Carry case
- Operating Instructions

2

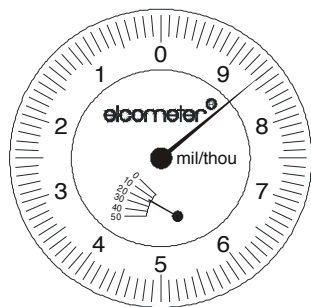
elcometer®

## 2 USING A SURFACE PROFILE GAUGE

1. Ensure that the gauge is set to zero before taking any measurements, thus: loosen the clamp locking screw, allowing the knurled bezel with the scale to rotate; place the gauge on the glass slide provided; turn the bezel until the pointer is aligned to zero; re-tighten the clamp screw.
2. Place the gauge on the surface to be measured. The spring-loaded tip is projected into the valley and the depth is indicated on the dial in microns or mils, according to the scale. See diagrams opposite.
3. To obtain a representative value of peak-to-valley height, a number of readings (at least 10) should be taken on a given surface area and the average obtained.
4. When evaluating the results, it must be remembered that the instrument reads from the three maximum peaks under the foot.
5. Under normal conditions of use, the zero setting of the gauge will not change if the bezel is locked. If, however, a shift in zero is noted, this is an indication of a worn or damaged tip, which should be replaced.

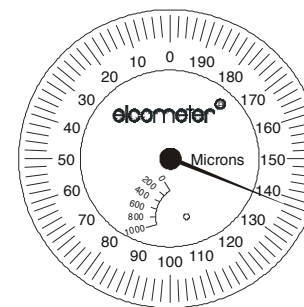
### MIL/THOU SCALE.

Each division on outer scale = 0.1 mils  
 Each numbered division = 1mils  
 Each division on inner scale = 10 mils  
 e.g Clock in diagram is showing 18.6mils



### MICRON SCALE.

Each division on outer scale = 2 microns  
 Each numbered division = 10 microns  
 Each division on inner scale = 200 microns  
 e.g Clock in diagram is showing 338 microns



3

elcometer

### **3 MAINTENANCE**

---

Elcometer products are designed to give many years reliable service under normal operating and storage conditions.

### **4 TECHNICAL SPECIFICATION**

---

Material:	Stainless steel
Dimensions:	105 x 55 x 25mm (4.1 x 2.2 x 1")
Range:	0 - 1000 $\mu$ m or 0-50mils/thou
Scale:	2 $\mu$ m or 0.1mil/thou
Tip:	60° cone with 50 $\mu$ m radius
Weight:	335g (8oz)

Your Elcometer 123 Surface Profile Gauge may be packed in a cardboard and foam package. Please ensure that this packaging is disposed of in an environmentally sensitive manner. Consult your local Environmental Authority for further guidance.

elcometer®

## 5 SPARES

---

The Elcometer 123 Surface Profile Gauge is complete with all the items required to get started and take measurements, however over the life of the Gauge replacements may be required. The following items are available from Elcometer, or your local supplier.

<b>Part description</b>	<b>Sales part number</b>
-------------------------	--------------------------

Spare Tip	T12311708
-----------	-----------

To order spare parts, contact Elcometer, your local supplier or visit [www.elcometer.com](http://www.elcometer.com)

## 6 RELATED EQUIPMENT

---

In addition to the Surface Profile Gauge, Elcometer produces a wide range of other Surface Profile Equipment. Users of the Surface Profile Gauge may also benefit from the following Elcometer product ranges:

Elcometer 223 Digital Surface Profile Gauge

Elcometer 224 Digital Surface Profile Gauge

For further information contact Elcometer, your local Elcometer supplier or visit [www.elcometer.com](http://www.elcometer.com)

**elcometer®**  
www.elcometer.com

**ENGLAND**

Elcometer Limited  
Edge Lane  
Manchester M43 6BU  
Tel: +44 (0)161 371 6000  
Fax: +44 (0)161 371 6010  
e-mail: sales@elcometer.com  
www.elcometer.com

**USA**

Elcometer Inc  
1893 Rochester Industrial Drive  
Rochester Hills Michigan 48309  
Tel: +1 248 650 0500  
Toll Free: 800 521 0635  
Fax: +1 248 650 0501  
e-mail: inc@elcometer.com  
www.elcometer.com

**ASIA & THE FAR EAST**

Elcometer (Asia) Pte Ltd  
896 Dunearn Rd  
Sime Darby Centre #03-09  
Singapore 589472,  
Tel: +65 6462 2822  
Fax: +65 6462 2860  
e-mail: asia@elcometer.com  
www.elcometer.com

**JAPAN**

Elcometer KK  
7F Toranomon MT40 Bldg. 5-13-1  
Toranomon, Minato-ku  
Tokyo 105-0001  
Tel: +81 (0)3-4530-9714  
Fax: +81 (0)3-4530-9713  
email: jp\_info@elcometer.com  
www.elcometer.co.jp

**BELGIUM**

Elcometer SA  
Rue Vallée 13  
B-4681 Hermalle /s Argenteau  
Tel: +32 (0)4 379 96 10  
Fax: +32 (0)4 374 06 03  
e-mail: be\_info@elcometer.com  
www.elcometer.be

**FRANCE**

Elcometer Sarl  
97 Route de Chécy  
45430 BOU  
Tel: +33 (0)2 38 86 33 44  
Fax: +33 (0)2 38 91 37 66  
e-mail: fr\_info@elcometer.com  
www.elcometer.fr

**GERMANY**

Elcometer Instruments GmbH  
Ulmer Strasse 68  
D-73431 Aalen  
Tel: +49(0)7361 52806 0  
Fax: +49(0)7361 52806 77  
e-mail: de\_info@elcometer.de  
www.elcometer.de

**THE NETHERLANDS**

Elcometer NL  
Newtonlaan 115  
3584 BH Utrecht  
Tel: +31 (0)30 210.7005  
Fax: +31 (0)30 210.6666  
email: nl\_info@elcometer.com  
www.elcometer.com