

**TECHNICAL DATA SHEET**

*Note: For safe, efficient blasting, read and follow the owner's manual and seek training for everyone who will use this equipment.*

**Purpose**

The Clemco CALIPSO Ambient Air Pump conveys breathing air from a clean environment outside the work area to a low-pressure (LP model) type CE supplied-air respirator worn by an operator inside the blast environment or work zone. The oil-less pump moves the air from a clean-air environment to the respirator without introducing oil or other contaminants.

**Requirements for Operation**

The following items are required for operation, but are not included with this equipment:

- Electric power supply — 110-115 volt, 60 hz, 10 amp. Alternate: 208/230 volt, 60 hz, 5 amp
- NIOSH-approved low-pressure, type CE-supplied-air respirator approved to operate at 10 psi or less, suitable for the application
- Appropriate approved respirator hose
- Output from the ambient air pump must meet the standard for Grade D breathing air, as defined by the Compressed Gas Association, Commodity Specification: G-7.1 ([www.cganet.com](http://www.cganet.com))

**Description of Operation**

The Clemco CALIPSO Ambient Air Pump must be placed outside of the blast environment in an area free of airborne contaminants. These potential contaminants include, but are not limited to, the following — fumes from paints and solvents, exhausts from vehicles and compressors, smoke from burn barrels, and dust from abrasive blasting or other construction activities.

The ambient air pump moves air from a clean location to the inside of the low-

**Description**

The Clemco CALIPSO Ambient Air Pump, is a cost-effective alternative to a breathing-air compressor. It provides an oil-free air supply for low-pressure, type CE, supplied-air respirators used for abrasive blasting or for any NIOSH-approved continuous flow hood or helmet-style respirator approved to operate with 8 cfm at 10 psi or less. [Note: See 4-operator models — TDS stock no. 21999.]



*Clemco's CALIPSO single operator air pump*

pressure respirator. To increase its effective range, the ambient air pump can be connected to an optional remote air intake kit — which allows the air intake to be located up to 300 feet from the pump.

An optional elevated air intake raises the intake three feet above the pump.

Before blasting begins, and before putting on the respirator, the operator connects the respirator hose to the ambient pump and to the fixed-orifice air inlet at the respirator. The operator turns on the pump, adjusts the pressure, and checks for leaks, then puts on the respirator in a clean environment.

After blasting, the operator keeps the respirator on and connected until he or she reaches an area free of airborne dust and contamination.

The air connection uses a special quick-connect fitting that allows air to flow, even

**Apollo Ambient Air Pump Model CALIPSO**

**Stock No. 25908**

when not connected to the respirator. This keeps hazardous dust or other contaminants from entering the hose at the connection point.

**Advantages**

- Eliminates expense of breathing air compressor
- Eliminates danger of carbon monoxide poisoning caused when high temperatures break down a compressor's lubricants
- Requires no temperature alarms or additional air line filters
- Hand portable
- Easy to operate and maintain
- Can be used as air source for other respirators that operate with 8 cfm at 10 psi

**Approvals and Certification**

UL recognized, CSA approved.

**Related Clemco Literature**

Contractor Series Catalog .....	.21385
Abrasive Blast Safety Practices .....	22090
Blast Off 2 .....	.09294
Apollo Safety System Brochure .....	.07764
CMS-3 Technical Data Sheet .....	.25580

**Options**

Apollo 20 LP with hose .....	.21423
Apollo 600 LP with hose .....	.25210

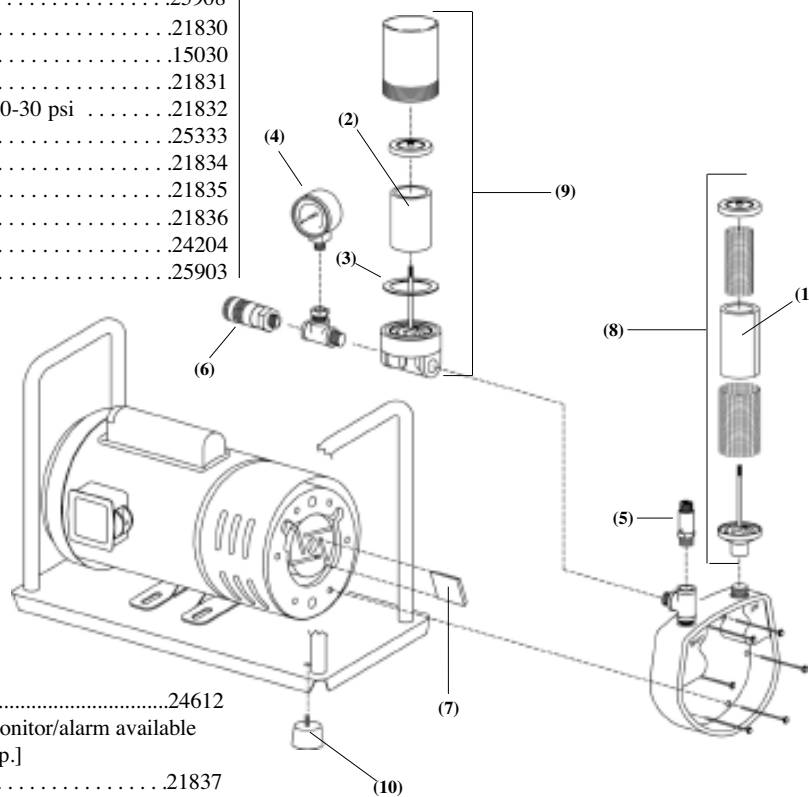
**Ordering Information**

**Item Description Stock No.**

(-) CALIPSO Ambient Air Pump .....	.25908
1. Filter media, intake .....	.21830
2. Filter cartridge, outlet .....	.15030
3. Gasket, outlet filter bowl .....	.21831
4. Gauge, 1/4-inch NPT pressure, 0-30 psi .....	.21832
5. Relief valve .....	.25333
6. Disconnect, 3/8-inch NPT .....	.21834
7. Vanes, set of 4 .....	.21835
8. Intake filter assembly .....	.21836
9. Outlet filter assembly .....	.24204
10. Foot, rubber, each (of 4) .....	.25903

**Specifications**

- Air flow output: 8 cfm at 10 psi
- 3/4 HP thermally-protected, dust-resistant, 110/115-volt motor (alternate 208/230 v)
- Amperage: 10.4 (recommended minimum 15 amp circuit)
- Oil-free air pump with 3/8-inch NPT inlet and outlet
- Pressure-relief valve
- Pressure gauge
- Inlet filter: Multi-layer disposable cloth element with wire inner and outer support
- Outlet filter: activated charcoal



**Accessories**

CMS-3 CO monitor/alarm package .....	.24612
[Note: CMS-3 is the only CO monitor/alarm available for use with an ambient air pump.]	
Hose kit, remote air intake .....	.21837
Hose extension, air intake, 50 ft .....	.21838
[Note: Maximum total hose length 300 feet]	
Intake kit, elevated .....	.21839

**Weights and Dimensions**

Dimensions	Unit	Shipping
Length:	18-1/4"	21-1/2"
Width (dia.):	11-5/8"	13"
Height:	13-3/4"	15-1/2"
Weight:	73 lb	84 lb

Authorized Distributor:

ISO 9001:2008 certified. Clemco is committed to continuous product improvement. Specifications are subject to change without notice.

© 2013 Clemco Industries Corp. • One Cable Car Drive • Washington, MO 63090 • Phone (636) 239-4300 • Fax 800 726-7559  
www.clemcoindustries.com

Stock No. 25981

info@clemcoindustries.com • www.clemcoindustries.com

Rev. A: 05/13