

Cordless Blasting LED Light

This LED Light is designed to mount on an abrasive blasting nozzle. It is powered by a Lithium rechargeable battery and therefore an electrical cord is no longer needed.

The white LED light does not distort the colour of the blasting areas. The temperature of the light is very low. Many of the current abrasive blasting lights on the market need a power cord, the surface of the light is extremely hot and the price is too high.

This light not only solves all these problems, but is also provided with more advanced features and functions. The light also can be worn on your head, attached to an object or simply held in the hand as a torch.

This light is originally designed for underground mining applications. It can withstand the harshest mining environment, making it extremely tough. The light also has an IP67 Rating.



1 | Product Features

No Cord

Current nozzle lights are connected power supply through an electrical cord. It is easy to snag, rupture or have to frequently re-attach. RG3SB is powered by a rechargeable battery integrated in the lamp, so electrical cord is not required any more. This cordless feature significantly increases your work efficiency and safety.

No Hot Surface

Current nozzle lights use Halogen bulb, which is very hot, sometimes even melts down surrounding components. This is dangerous in operations. RG3SB uses LED – a cool light source. The temperature is very low and the surface is touchable.

Multiple Functions

Current nozzle lights are only for nozzle installation. RG3SB is not just a nozzle light; it can be used in various convenient ways. Some important accessories are included in the package for your different applications.

Dustproof and Waterproof

It is designed to IP67 protection. This means the highest dustproof and submersible waterproof.

Natural Light

Current Halogen based nozzle lights are in yellowish causing colour distortion of the targeting object. RG3SB is in sunlight style in colour temperature 6000K, a typical daylight colour temperature. This is particularly important in painting.

Low Cost to Purchase

The retail price of RG3SB is less than 40% of competitor nozzle lights.

Low Cost to Operate

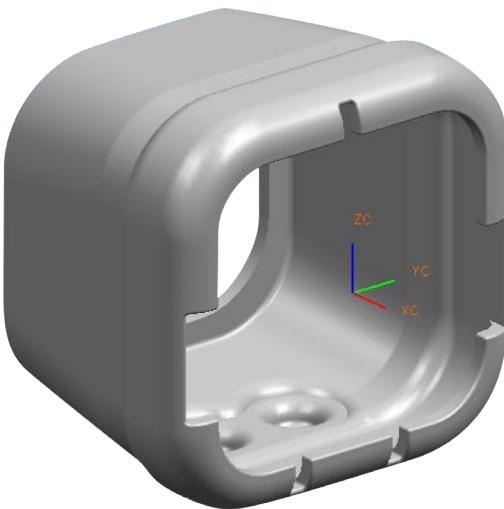
Different from gas lights and filament light, LED is a solid light and never breaks down. You do not need to check or change the bulb. You also do not need to check, change or repair electrical cord or damaged parts. The battery is rechargeable and never needs replacement.

2 | Key Parts

2.1 Light



2.2 Nozzle Mounting Parts



Body Sleeve

Protects Lamp Body and holds the Glass Cover

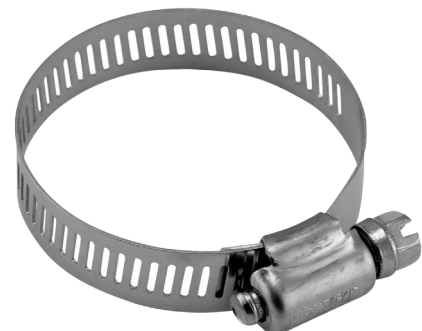
Glass Cover

Protects the Lamp



Bracket

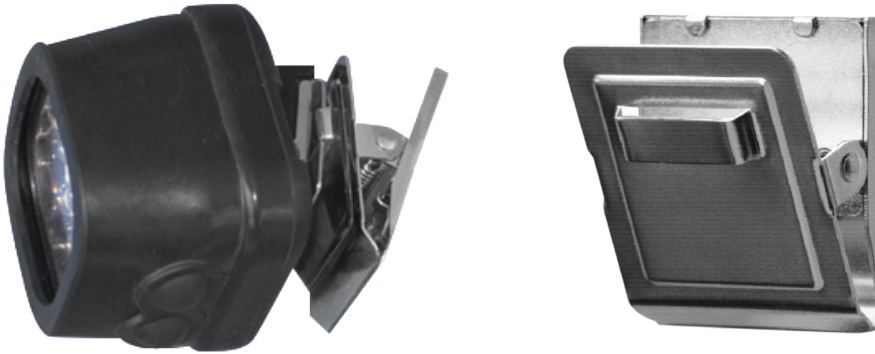
Mounts the Lamp on the Nozzle



Hose Clamp

Holds the Bracket on the Nozzle (*this is a standard Hose Clamp, which can be purchased from any hardware store*).

2.3 Magnetic Lamp Clamp



Clamp the light on an object or magnetically attach it to metal

3 | Operation

There are two button switches. One switch controls the two LED's in the centre. Another one controls the other 8 LED's. Therefore, there are 3 operating modes for different brightness and durations: 2-LED's on, 8-LED's on and 10-LED's on.

4 | Nozzle Mounting

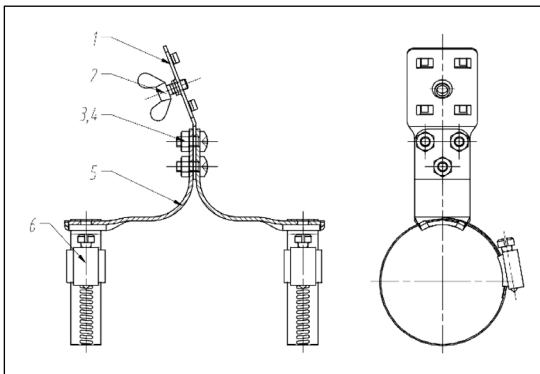
Step 1: Wrap the light with a Body Sleeve

Step 2: Mount the Glass Cover into the Body Sleeve

Step 3: Clamp the Bracket to the nozzle using two Hose Clamps. Tight the hand screw on the Bracket to fasten the light tightly

Step 4: Insert the light into the Bracket

Step 5: Check and make sure everything is mounted correctly and tightly



5 | Maintenance

5.1 Charging

Every package contains a Mains Charger to charge the lamp from a Mains Outlet, just like charging a mobile phone.

The battery is Lithium rechargeable battery with no memory effects. The lamp has an overcharge protection circuit. So just plug your charger and leave it.

You do not need to unplug it when not used in a few days. We also have other charging facilities as optional including Vehicle Charger to charge the lamps in the cigarette lighter in a car or truck and Charging Banks to charge 8~52 lamps together.



5.2 Glass Cover Installation

When the Glass Cover is worn out and eventually affects the light, it is time to replace it. A box of Glass Covers is supplied as standard service components in each package.

Glass Cover installation is easy. Just open the front of the Body Sleeve to place the Glass Cover inside the Sleeve, then close the Sleeve again. You do not need to take off the Body Sleeve.



6 | Package Contents

Lamp

Charger

Nozzle Mounting Parts

- > Body Sleeve
- > Glass Cover
- > Bracket
- > Two pairs of Hose Clamps in different sizes

Service Parts and Accessories

- > 50 Glass Covers
- > 1 more Body Sleeve
- > Wrist Strap
- > Magnetic Clamp Bracket

Instructions

Package Content Sheet

7 | Specifications

Operating Modes	10-LEDs, 8-LEDs and 2-LEDs on
Operating Period	14 hours for all LEDs on
Charging Time	8 hours
Battery Capacity	2.5 AH
Battery Voltage	3.7V
Battery Lifetime	80%C after 500 charging cycles
LED Lifetime	30,000 hours
Weight	155 g
Enclosure Protection	Water resistant (IP67)
Warranty	1 year replacement warranty