

# WIWA DUOMIX 333 PFP

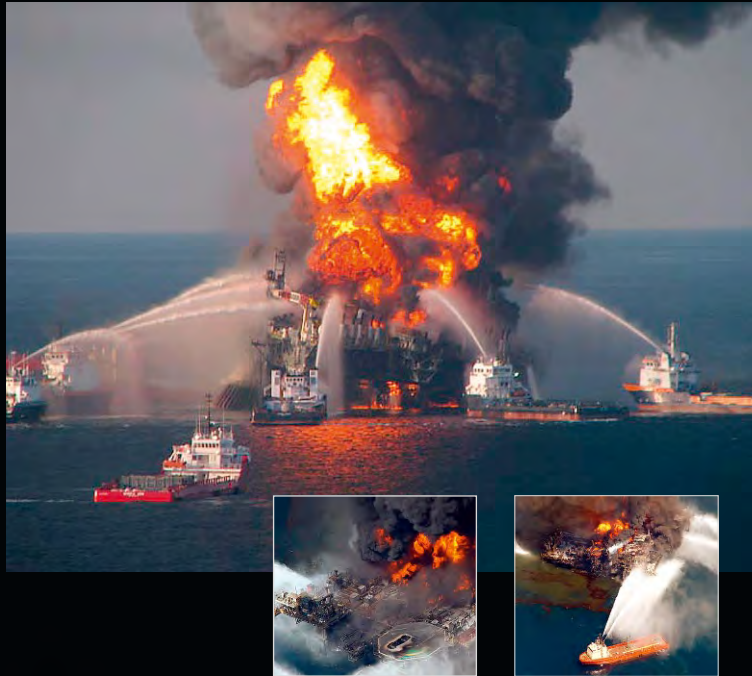
In close cooperation with major material manufacturers, WIWA has developed plural component spraying equipment for passive fire protection applications.

## REASONS TO CHOOSE WIWA:

- Over 300 DUOMIX systems in use successfully worldwide, under the toughest conditions.
- State-of-the-art technology Made in Germany.
- Highly qualified employees, agents and distributors worldwide for local sales and service.
- Commissioning and training at customers location or job site.
- Supply of spare parts and accessories readily available.
- Competent customer service in the local language.
- Safe and easy system operation.
- Individual modifications possible due to modular concept.
- Top quality and service at a fair price.
- Ratio and pressure control.

## SYSTEM SPECIFICATIONS

- Mixing ratio: Exchangeable  
Pressure ratio: from 58:1 to 87:1  
Output per cycle: from 230 to 345 cm<sup>3</sup>  
(7,6 to 11,5 fl.oz.)  
Air consumption: 5000 l/min.  
(177 scfm)  
Electrical supply: 400V  
or at customers request  
Approx. weight: 1100 kg  
(2425 lbs)  
Dimensions (m) 2.56 x 1.3 x 1.98  
101" x 51" x 78"  
(L x W x H)  
Other configurations available.



**WIWA – the best solution for the application of passive fire protection material.**

# WIWA DUOMIX 333 PFP Twin feed unit

# WIWA HERKULES PFP Single feed unit

## ECONOMICAL AND ENVIRONMENTALLY FRIENDLY

Typical systems include:

- Numerous temperature reading points displayed digitally.
- Heated, insulated pressure tanks available in a variety of sizes.
- Electrical and/or pneumatic agitators.
- Multi-purpose frame, easy to transport.
- Pressure and metering monitor providing automatic shutdown.
- Material feed with shovel pumps (different sizes available).
- Shovel pumps mounted on pneumatic rams.
- Optical level control for the pressure tanks with automatic refill.

WIWA developed this single feed HERKULES PFP unit for the use for smaller areas and for repairs.

## SYSTEM SPECIFICATIONS

Pressure ratio: 75:1

Output per cycle: 225 cm<sup>3</sup>  
(9,2 fl.oz.)

Approx. weight: 230 kg  
(507 lbs)

Wide variety of accessories available.

## Wilhelm Wagner GmbH & Co. KG

Gewerbestraße 1-3  
D-35633 Lahnau, Germany

Phone: +49 6441 609-0  
Fax: +49 6441 609-50

E-Mail: [info@wiwa.de](mailto:info@wiwa.de)  
Internet: [www.wiwa.com](http://www.wiwa.com)

WIWA DUOMIX 333 PFP  
Twin feed unit



WIWA HERKULES 1K PFP  
Single feed unit

