

ToughTek™ F340e Remote Switch Accessory Kit 17G554

3A3112C

EN

For allowing control of ON/OFF functionality at the applicator.

For professional use only.

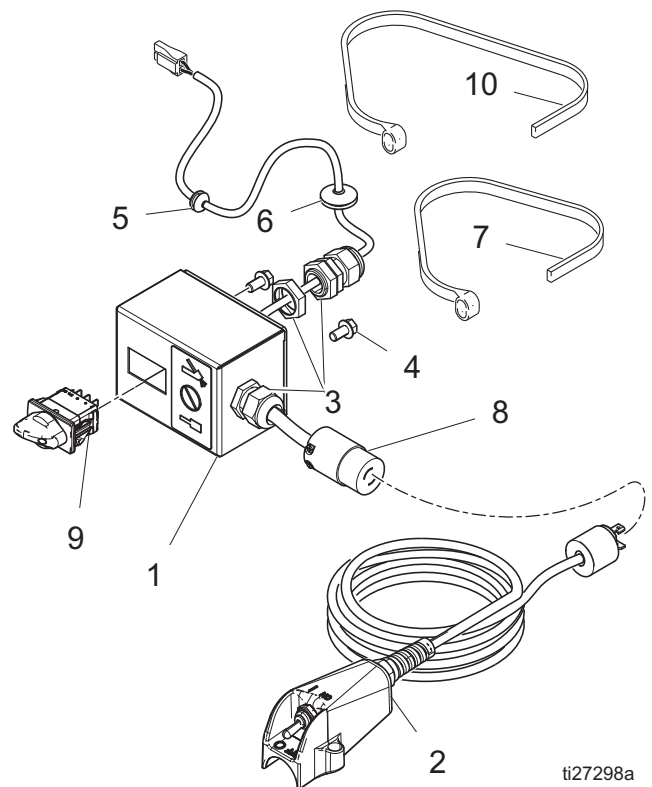
Not approved for use in explosive atmospheres or hazardous locations.



Important Safety Instructions

Read all warnings and instructions in this manual and the ToughTek™ F340e Operation manual 3A3109. Save these instructions.

Ref.	Part	Description	Qty.
1		ENCLOSURE, remote switch	1
2	17H197	SWITCH, remote, ON/OFF	1
3	114421	BUSHING, strain relief	2
4	113161	SCREW, flange, hex hd	2
5	128597	GROMMET, 3/16 in. ID x 9/16 in. OD	1
6	128596	GROMMET, 5/16 in. ID x 1 in. OD	1
7	125871	TIE, cable, 7.5 in.	1
8		PLUG, receptacle, 15 amp	1
9	17F721	SWITCH, rotary	1
10		TIE, 14.5 in. cable	3



ti27298a

Instructions

WARNING

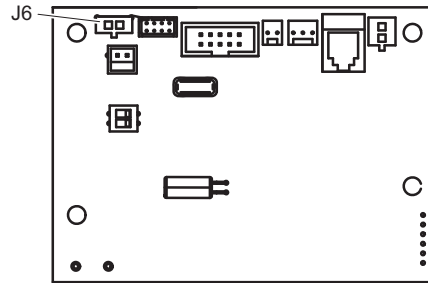
ELECTRIC SHOCK HAZARD

The equipment must be grounded. Improper grounding, setup, or usage of the system can cause electric shock.

- Turn off and disconnect power cord before servicing equipment.
- Connect only to grounded electrical outlets.

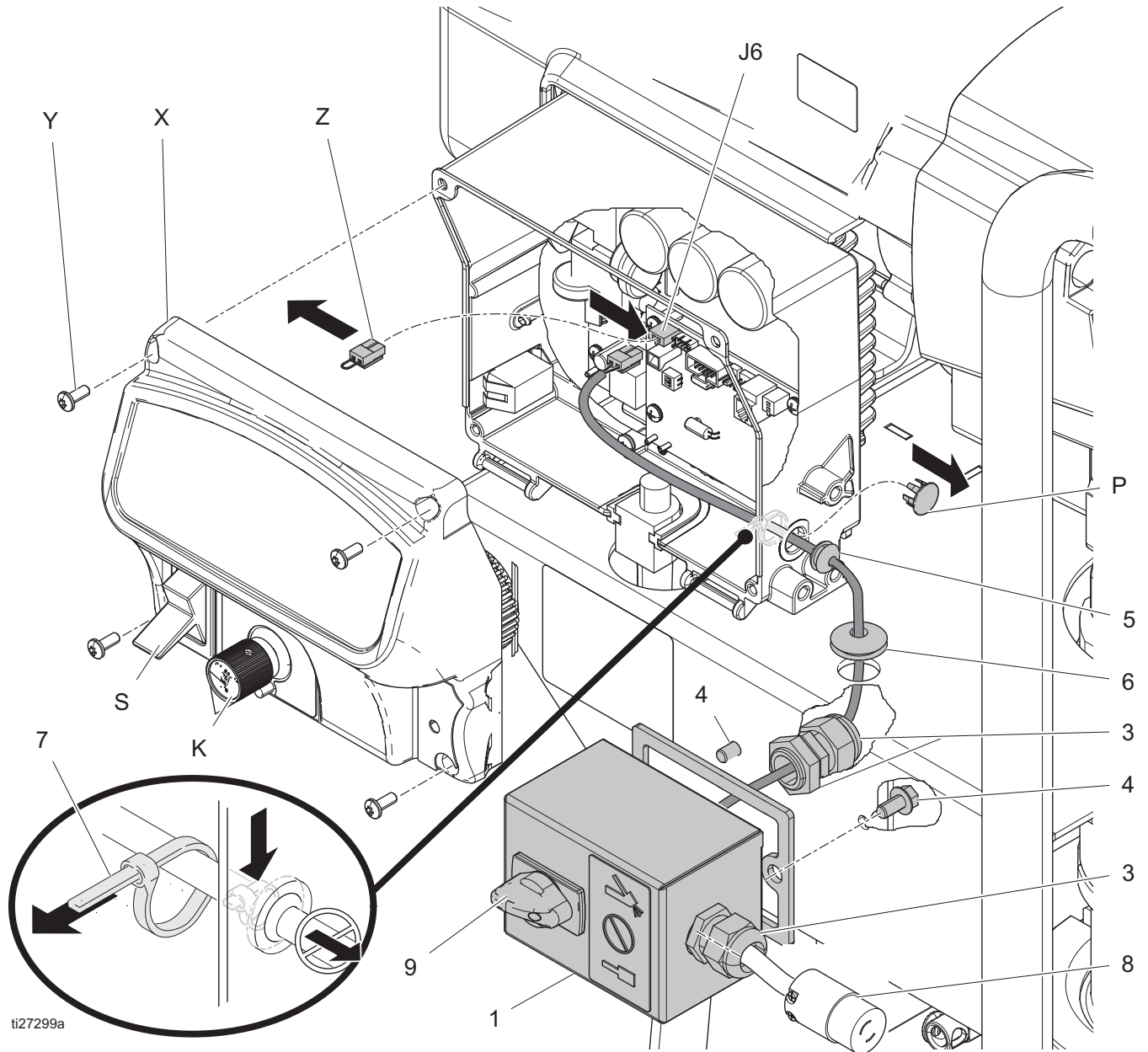
1. Turn off and disconnect power cord.
2. Slip the strain relief bushing nut (3) over the cable.
3. Route cable through the hole in the cart side plate (located near the control box).
4. Slip the strain relief bushing (3) over the cable from the other side of the cart side plate. Thread the strain relief nut (3) onto the bushing until tight.
5. Tighten the strain relief bushing (3) to the cable until snug. **NOTE:** Leave two inches of cable between the remote enclosure (1) and strain relief nut (3).
6. Install the remote enclosure (1) to the cart side plate and tighten the mounting screws (4).
7. Route the cable through the hole in the cart top plate.
8. Slip the large grommet (6) over the cable and insert the grommet into the hole on the top plate.

9. Open the motor control box and remove the yellow jumper wire and connector (Z) in J6 by pinching the tab on the bottom. **NOTE:** It may be easier to first disconnect the connector below to allow more room to grab it.



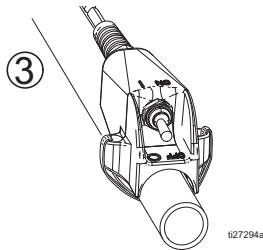
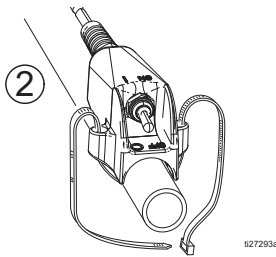
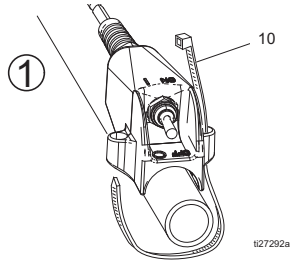
10. Remove the plug (P), then route the cable into the motor control box.
11. Plug the remote switch cable to the same J6 connector that was just unplugged. Re-insert the connector below if it was removed in step 9.
12. Cut the small grommet (5) to fit over the cable and push it into the hole from where plug (P) was removed.
13. Make sure there is some slack on the cable inside the motor control, then attach the cable tie (7) next to the grommet to provide additional strain relief.
14. Clip and remove excess cable tie (7).
15. Close the motor control module and screw shut.
16. Install remote switch cable (2) into enclosure plug (8).

Routing Diagram

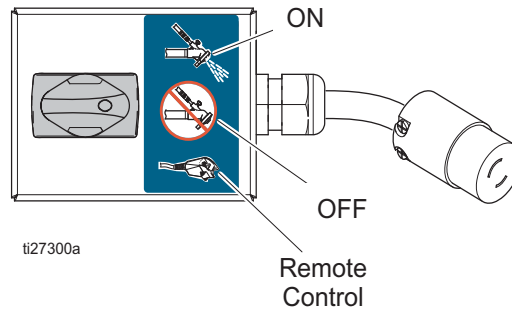


Remote Switch Installation

To install the remote switch to the hose or pole spray applicator, follow the illustrations below. The applicator will fit on hoses/applicators sized .75 in. up to 1.25 in.



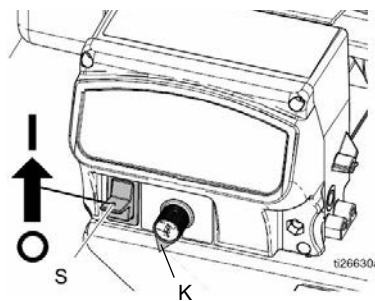
Pump Control Settings



Pump Control Setting	Description
ON	The motor will run continuously at the speed determined by the flow adjustment knob (K).
OFF	The motor will not run. There is still power to the unit.
Remote Control	The "Remote Control" setting allows the user to control ON/OFF functionality of the pump through the remote toggle switch (2). When the remote toggle switch (2) is installed and the pump control settings are set to "Remote Control", the toggle switch can be used to turn the pump ON and OFF (see descriptions above).

Operation

The motor power switch (S) must be ON for the sprayer to pump material.



Graco Standard Warranty

Graco warrants all equipment referenced in this document which is manufactured by Graco and bearing its name to be free from defects in material and workmanship on the date of sale to the original purchaser for use. With the exception of any special, extended, or limited warranty published by Graco, Graco will, for a period of twelve months from the date of sale, repair or replace any part of the equipment determined by Graco to be defective. This warranty applies only when the equipment is installed, operated and maintained in accordance with Graco's written recommendations.

This warranty does not cover, and Graco shall not be liable for general wear and tear, or any malfunction, damage or wear caused by faulty installation, misapplication, abrasion, corrosion, inadequate or improper maintenance, negligence, accident, tampering, or substitution of non-Graco component parts. Nor shall Graco be liable for malfunction, damage or wear caused by the incompatibility of Graco equipment with structures, accessories, equipment or materials not supplied by Graco, or the improper design, manufacture, installation, operation or maintenance of structures, accessories, equipment or materials not supplied by Graco.

This warranty is conditioned upon the prepaid return of the equipment claimed to be defective to an authorized Graco distributor for verification of the claimed defect. If the claimed defect is verified, Graco will repair or replace free of charge any defective parts. The equipment will be returned to the original purchaser transportation prepaid. If inspection of the equipment does not disclose any defect in material or workmanship, repairs will be made at a reasonable charge, which charges may include the costs of parts, labor, and transportation.

THIS WARRANTY IS EXCLUSIVE, AND IS IN LIEU OF ANY OTHER WARRANTIES, EXPRESS OR IMPLIED, INCLUDING BUT NOT LIMITED TO WARRANTY OF MERCHANTABILITY OR WARRANTY OF FITNESS FOR A PARTICULAR PURPOSE.

Graco's sole obligation and buyer's sole remedy for any breach of warranty shall be as set forth above. The buyer agrees that no other remedy (including, but not limited to, incidental or consequential damages for lost profits, lost sales, injury to person or property, or any other incidental or consequential loss) shall be available. Any action for breach of warranty must be brought within two (2) years of the date of sale.

GRACO MAKES NO WARRANTY, AND DISCLAIMS ALL IMPLIED WARRANTIES OF MERCHANTABILITY AND FITNESS FOR A PARTICULAR PURPOSE, IN CONNECTION WITH ACCESSORIES, EQUIPMENT, MATERIALS OR COMPONENTS SOLD BUT NOT MANUFACTURED BY GRACO. These items sold, but not manufactured by Graco (such as electric motors, switches, hose, etc.), are subject to the warranty, if any, of their manufacturer. Graco will provide purchaser with reasonable assistance in making any claim for breach of these warranties.

In no event will Graco be liable for indirect, incidental, special or consequential damages resulting from Graco supplying equipment hereunder, or the furnishing, performance, or use of any products or other goods sold hereto, whether due to a breach of contract, breach of warranty, the negligence of Graco, or otherwise.

FOR GRACO CANADA CUSTOMERS

The Parties acknowledge that they have required that the present document, as well as all documents, notices and legal proceedings entered into, given or instituted pursuant hereto or relating directly or indirectly hereto, be drawn up in English. Les parties reconnaissent avoir convenu que la rédaction du présente document sera en Anglais, ainsi que tous documents, avis et procédures judiciaires exécutés, donnés ou intentés, à la suite de ou en rapport, directement ou indirectement, avec les procédures concernées.

Graco Information

For the latest information about Graco products, visit www.graco.com.

For patent information, see www.graco.com/patents.

TO PLACE AN ORDER, contact your Graco distributor or call to identify the nearest distributor.

Phone: 612-623-6921 or Toll Free: 1-800-328-0211 Fax: 612-378-3505

All written and visual data contained in this document reflects the latest product information available at the time of publication. Graco reserves the right to make changes at any time without notice.

Original instructions. This manual contains English. MM 3A3112

Graco Headquarters: Minneapolis

International Offices: Belgium, China, Japan, Korea

GRACO INC. AND SUBSIDIARIES • P.O. BOX 1441 • MINNEAPOLIS MN 55440-1441 • USA
Copyright 2014, Graco Inc. All Graco manufacturing locations are registered to ISO 9001.

www.graco.com

Revision C, December 2015