

Graco Reactor 2 Plural Sprayer

Parts

Parts

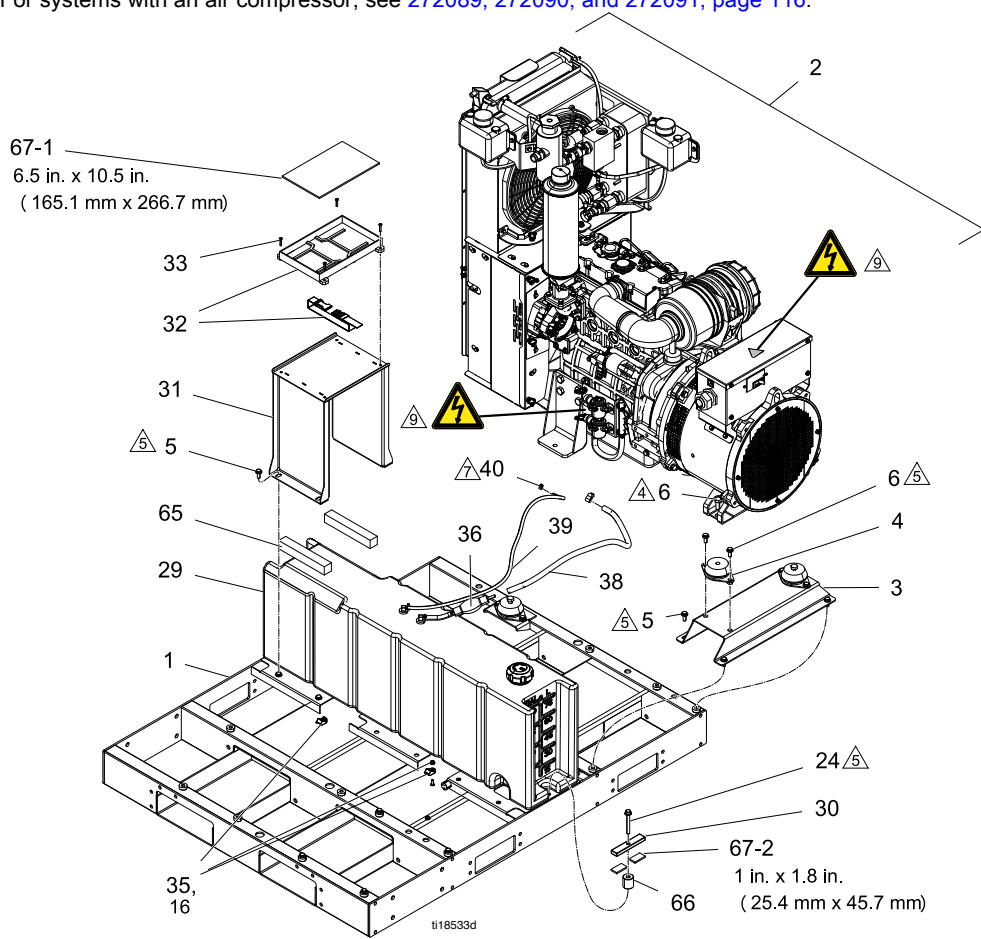
Systems

272079, E-30i

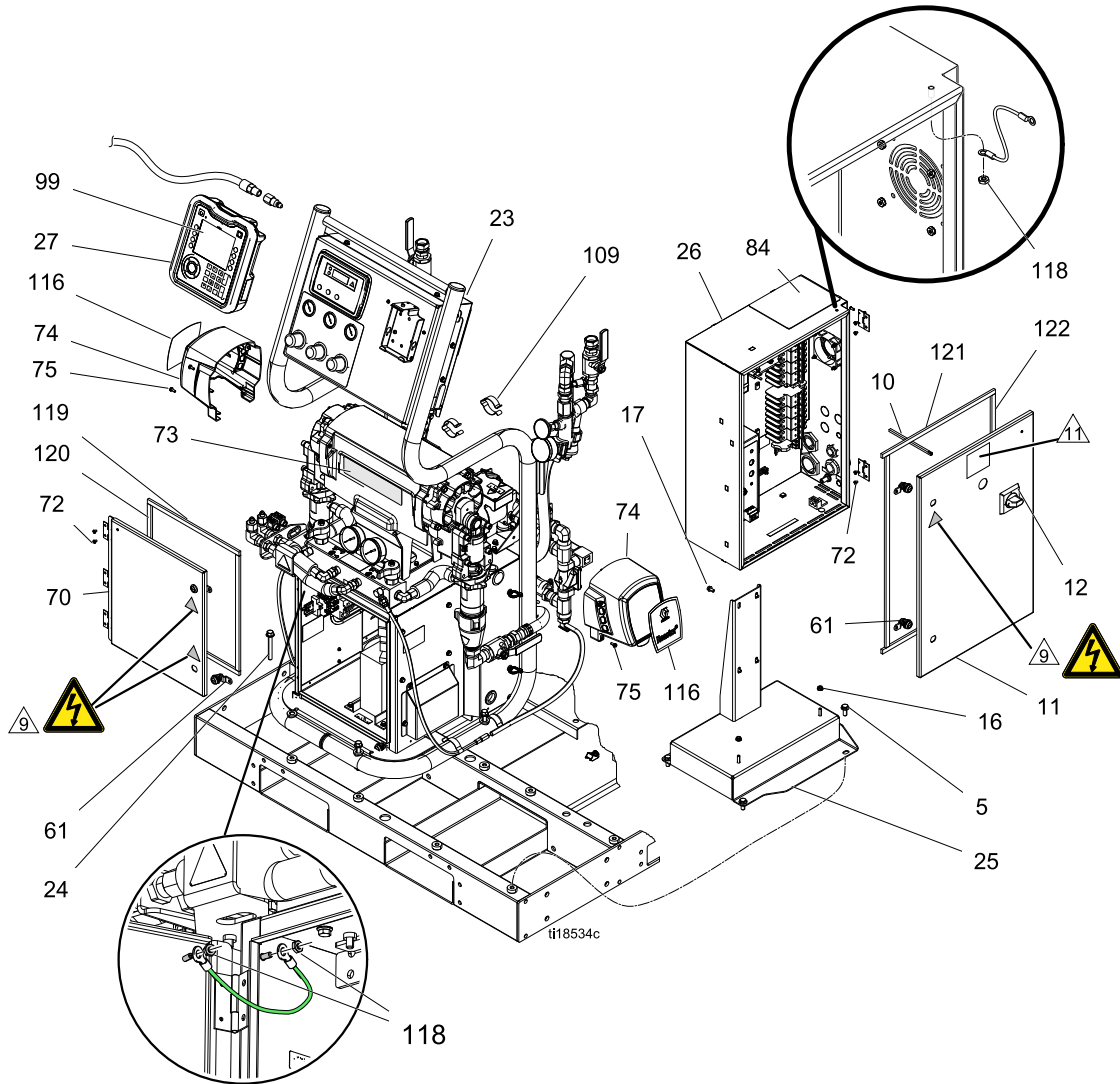
272080, E-30i with Booster Heat

272081, E-XP2i with Booster Heat

For systems with an air compressor, see [272089](#), [272090](#), and [272091](#), page 116.



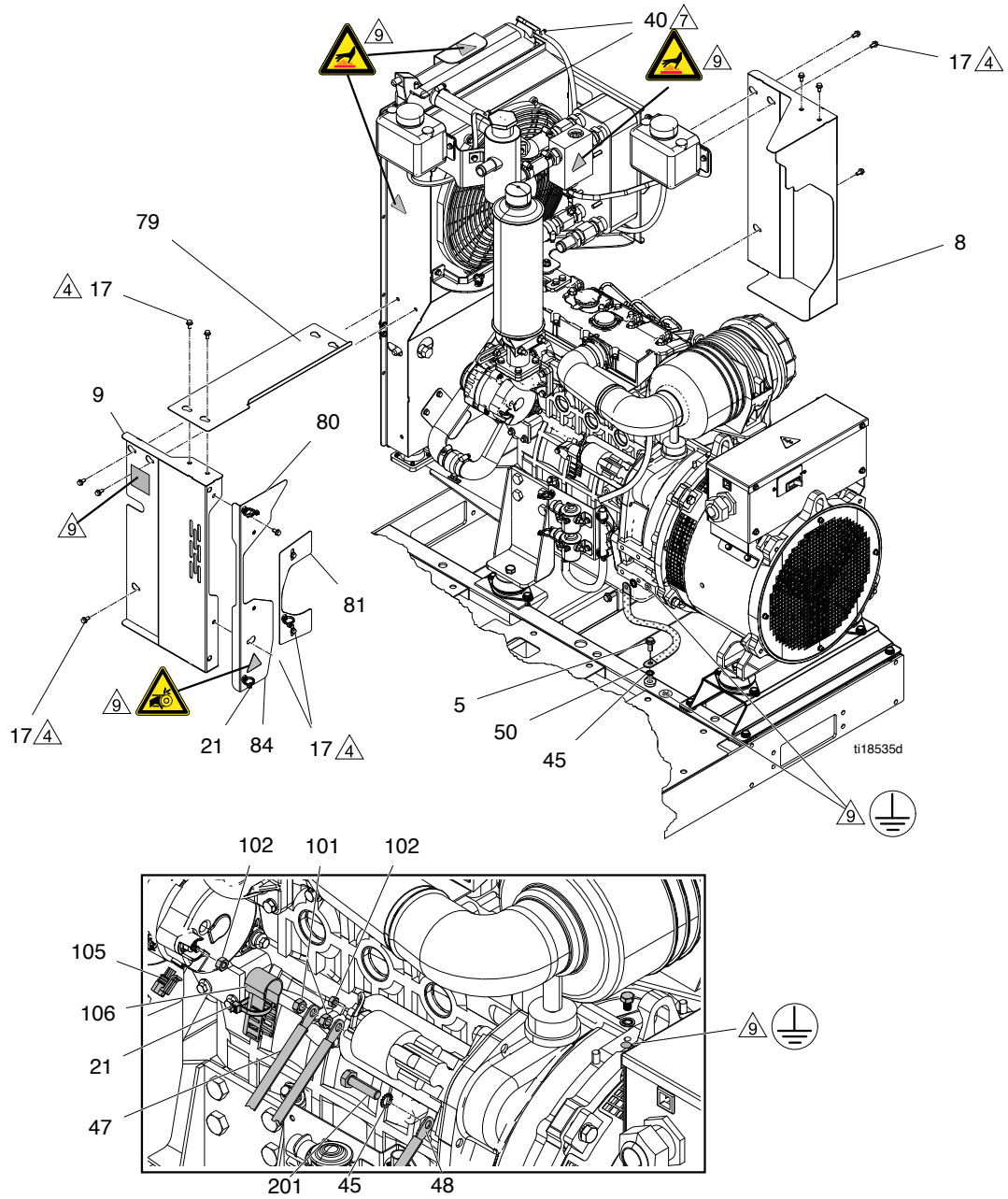
Parts



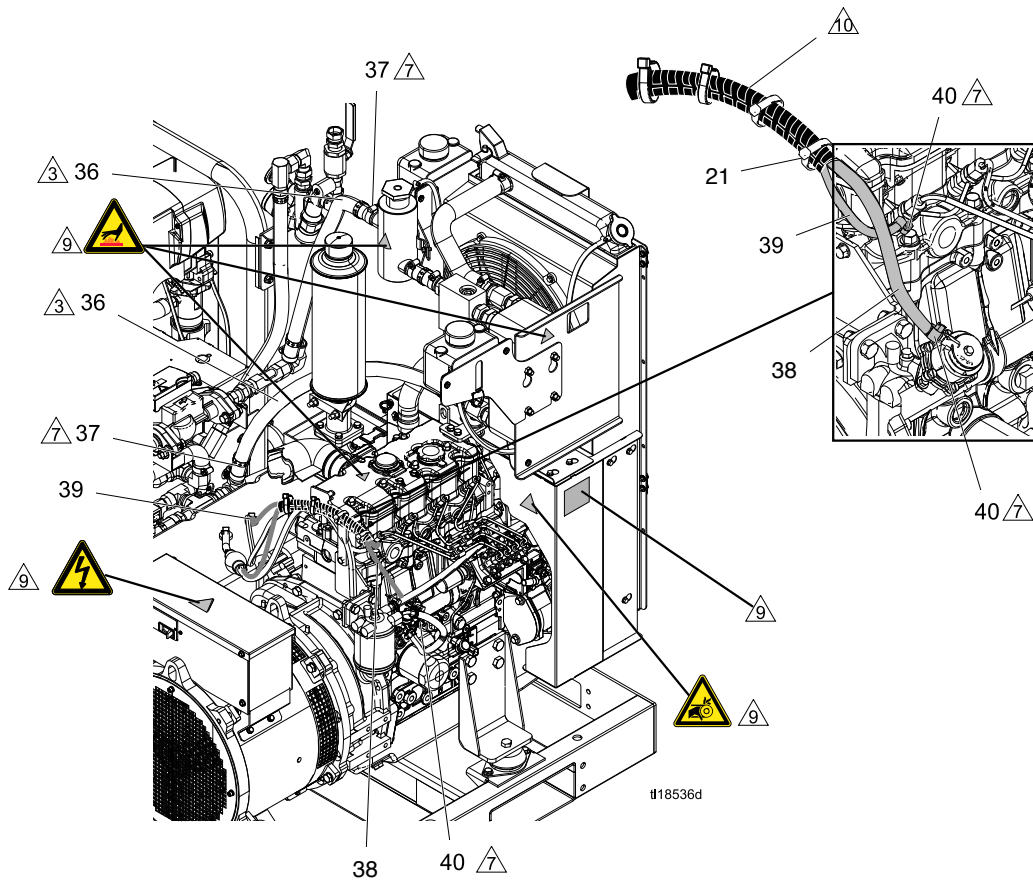
332637G

109

Parts



Parts



- | | |
|--|--|
| <ul style="list-style-type: none"> △2 Apply anaerobic sealant to all non-swiveling pipe threads. △3 Apply lubrication to all push-on hoses prior to assembly. △4 Torque to 25 ft-lbs (33.8 N•m). △5 Torque to 40 ft-lbs (54 N•m). △6 Torque to 15–20 in.-lbs (1.7–2 N•m). | <ul style="list-style-type: none"> △7 Torque to 25 in-lbs (2.8 N•m). △9 Safety and warning labels are from label sheet (55). △10 Bundle fuel lines above engine, inside flexible plastic split conduit, with cable ties (81) to avoid direct contact. |
|--|--|

Parts

Ref	Part	Description	Quantity		
			272079	272080	272081
1	24J658	BASE, pallet	1	1	1
2	---	GENERATOR, diesel, 22kw; see 22 kW Diesel Generator, page 142	1	1	1
3	16H732	SUPPORT, generator	1	1	1
4	24L953	KIT, isolator (4 pack)	1	1	1
5	111192	SCREW, cap flange hd; 0.875 in. (22 mm), 3/8-16	20	20	20
6	105324	SCREW, cap, hex hd; 1.2 in (30 mm), M12 x 1.75	4	4	4
7	16U131	GROMMET, tube	1		
8	16H898	GUARD, engine, right	1	1	1
9	16H894	GUARD, engine, left	1	1	1
10	125677	ROD, connecting, on/off	1	1	1
11	16X025	DOOR, electrical enclosure	1	1	1
12	16K893	HANDLE, selector, on/off	1	1	1
14●	123656	CABLE, 5pin, male/female (matrix)	1	1	1
16	115942	NUT, hex, flange head; 1/4-20	4	4	4
17	113161	SCREW, flanged, hex hd; 0.5 in. (13 mm), 1/4-20	18	18	18
18●	16W131	CABLE, m12 5p, fem - male, 3.0m	2	2	2
19●	24T051	CABLE, m8 4p (f) to m12 8p (m); 3.0 m	1	1	1
20●	24T198	HARNESS, ac, power, reactor cart	1	1	1
21	125625	TIE, cable, fir tree	5	5	5
22●	24T241	CABLE, power, 24v, integ reactor	1	1	1
23	---	PROPORTIONER, E-30i, (230v, 1ph), see Proportioners, page 122	1		
	---	PROPORTIONER, E-30i, (4.0kw, 230v, 1ph), see Proportioners, page 122		1	
	---	PROPORTIONER, E-xp2i, (4.0kw, 230v, 1ph), see Proportioners, page 122			1
24	125626	SCREW, hex hd, flanged; 3 in. (76 mm), 3/8-16	6	6	6
25	16V420	BRACKET, mounting	1	1	1
26	---	ENCLOSURE, electrical, see Electrical Enclosure, page 140	1	1	1
27	24U854	MODULE, GCA, ADM	1	1	1
29	24K390	TANK, fuel, see Fuel Tank, page 150	1	1	1
30	16J889	BRACKET, support, fuel tank	2	2	2
31	24J690	SUPPORT, battery	1	1	1
32	125166	TRAY, battery	1	1	1
33	107251	SCREW, pan hd; 1 in. (25.4 mm), #10-24	4	4	4

Parts

Ref	Part	Description	Quantity		
			272079	272080	272081
34*	24M174	STICKS, level, A and B side, 55 gal. (208 l)	1	1	1
35	16K214	HOLDER, cable, tie	4	4	4
36a*	---	HOSE, coolant, 1 in. ID; 2.66 ft (0.81 m)	1	1	1
36b*	---	HOSE, coolant, 1 in. ID; 2.92 ft (0.89 m)	1	1	1
37*	125370	CLAMP, hose, dia. 11/16-1-1/2 in.	4	4	4
38	---	HOSE, fuel, 5/16 in.; 3.33 long	1	1	1
39	---	HOSE, fuel, 3/16 in.	4	4	4
40*	125163	CLAMP, hose, 7/32-5/8 in.	6	6	6
43*	206995	FLUID, TSL™, 1 qt.	2	2	2
44*	106569	TAPE, electrical	1	1	1
45	100639	WASHER, lock	3	3	3
46●	127286	CABLE, cordset, reverse key, .5m	2	2	2
47●❖	16K232	CABLE, battery, 30 in. (762 mm), red	1	1	1
48●❖	16K233	CABLE, battery, 30 in. (762 mm), black	1	1	1
49●	16K301	HARNESS, dc, diesel, engine	1	1	1
50	125751	CABLE, grounding, braided, engine	1	1	1
51●	16Y518	HARNESS, AC, sense, genset control	1	1	1
52●	125753	CABLE, AC, power, 240v alternator	1	1	1
53●	16K299	HARNESS, dc, disconnect check	1	1	1
54●	24T242	CABLE, over-temp, single reactor		1	1
	24U109	CABLE, over-temp, switch short	1		
55	16K939	LABEL, safety, system, multi	1	1	1
56	16X154	LABEL, Graco InSite	1	1	1
57●	121002	CABLE, can, female / female 1.5m	1	1	1
58●	125358	CABLE, m8, 4-pin, mf, .5meter, mold		1	1
59●	122837	CABLE, m8, 4-pin, mf, 3m, molded	2	2	2
60●	123652	CABLE, can, male / female 3.5m	1	1	1
61	16W596	LATCH, door	4	4	4
62●	24T199	CABLE, control module, heater		2	2
65	16K362	FOAM, support block	2	2	2
66	16K363	SPACER, fuel tank	2	2	2
67	16H910	GASKET, radiator isolation	1	1	1
69	16W245	DOOR, cabinet	1	1	1
70*	24K207	KIT, FTS, RTD, single hose; see heated hose manual	1	1	1
71●	125357	CABLE, m8, 4-pin, mf, 1meter, molded	3	4	4

332637G

113

Parts

Ref	Part	Description	Quantity		
			272079	272080	272081
72	108290	SCREW, mach, binding hd; 1/4 in., #8-32	4	4	4
73	16W216	LABEL, E-30i, elite	1	1	
	16W217	LABEL, E-XP2i, elite			1
74◆	287292	COVER, drive, plastic	2	2	2
75◆	118444	SCREW, mach, slot hex wash hd; 1/2 in. x #10-24	8	8	8
76	190774	BLANK, label, kit	2	2	2
77✕	125871	TIE, cable, 7.50 in.	40	40	40
78	125844	CONDUIT, flexible, non-metalic	7	10.33	10.33
79	16M317	GUARD, engine, top	1	1	1
80	16M319	GUARD, alternator, mount	1	1	1
81	16M321	GUARD, alternator, plate	1	1	1
82✕	333093	QUICK GUIDE, startup	1	1	1
83✕	333094	QUICK GUIDE, shutdown	1	1	1
84	15G280	LABEL, safety, warning, multiple	1	1	1
85●	16K172	HARNESS, dc, link, fusible	1	1	1
86●	125754	CABLE, AC, alternator breaker, blk	1	1	1
87●	125755	CABLE, AC, alternator breaker, red	1	1	1
88●	125822	CABLE, AC, alternator, n to gnd, wh	1	1	1
89	16K297	HARNESS, DC, genset controller	1	1	1
90	- - -	LABEL, cable, self-lam, top level	1	1	1
91	- - -	KIT, label	2	2	2
93●	120448	SUPPRESSOR, box snap, ferrite	1	1	1
94●	125835	CLIP, ferrite bead	3	3	3
95●	125839	CLIP, ferrite bead	1	1	1
97	109124	HOSE, coupled, 48 in	1	1	1
98	169970	FITTING, airline; 1/4-18 NPT (m)	3	3	3
99	15V551	SHIELD, membrane, ADM (10 pack)	1	1	1
101	105329	NUT, hex; M8 x 1.25	2	2	2
102	114816	NUT, hex; M6 x 1	3	3	3
103	100186	WASHER, lock, internal tooth	1	1	1
104	15V909	SCREW, 1/2 in. (12 mm), M8 x 1.25	1	1	1
105+	110911	NUT, hex; M5 x 0.8	1	1	1
106	126054	INSULATOR, cap	1	1	1
109	186494	CLIP, spring	2	2	2
113	169967	FITTING, line air; 1/4-18 NPT (f)	1	1	1

Parts

Ref	Part	Description	Quantity		
			272079	272080	272081
114*	16P405	FUSE, bolt-down, 60A	1	1	1
115*	16P406	HOLDER, fuse, bolt-down	1	1	1
116	16W213	LABEL, Reactor	2	2	2
117	16D576	LABEL, made in USA	1	1	1
118	113505	NUT, keps, hex hd	2	2	2
119	16X121	GASKET, door	2	2	2
120	16X122	GASKET, door	2	2	2
121	16X123	GASKET, door	2	2	2
122	16X124	GASKET, door	2	2	2
123	117777	HOLDER, vinyl shop ticket	1	1	1
124*	16Y509	CORE, ferrite, snap-on; 0.76 ID	2	2	2
125*	16Y516	CORE, ferrite, snap-on; 0.394 ID	1	1	1

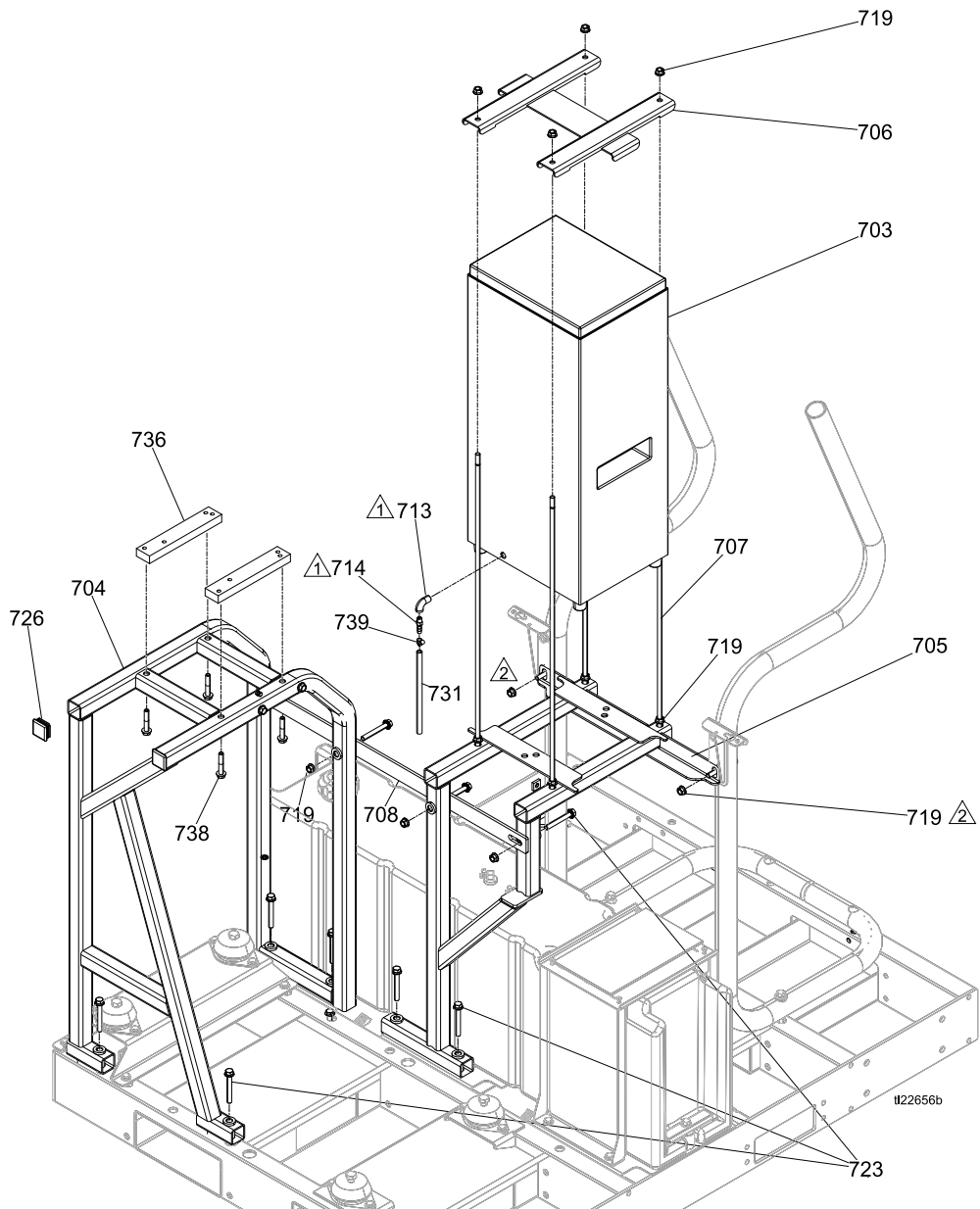
Replacement Warning labels, signs, tags, and cards are available at no cost.

- See [Electrical Schematics, page 156](#).
- ❖ Included in Battery Cable Kit 24L962.
- * Included in Complete Coolant Hose Kit 24L939. See [Complete Coolant Hose Kit, page 132](#).

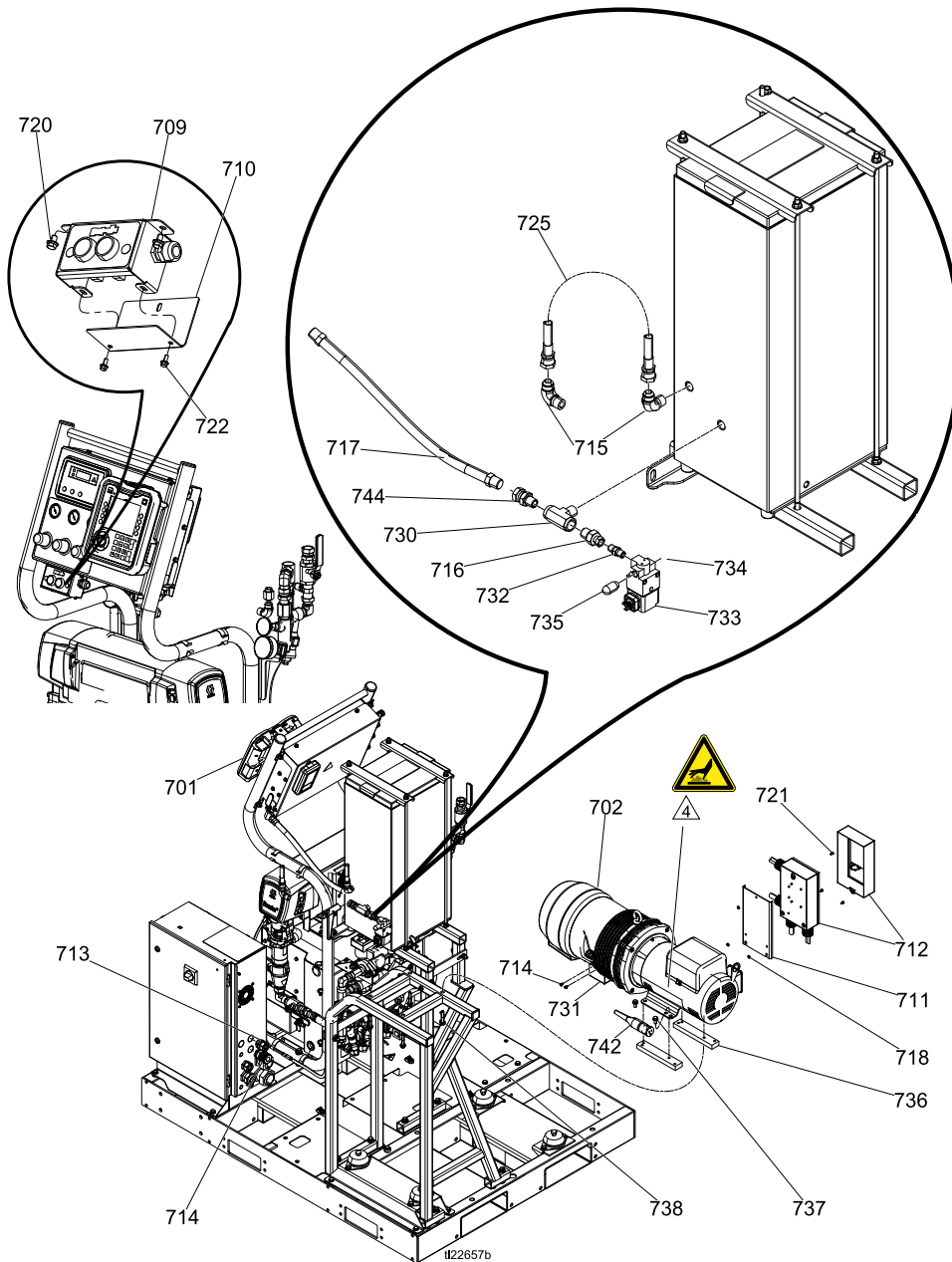
- * Not shown.
- ◆ Cover Repair Kit includes four screws.
- + Nut only used on 3-post alternator style. Not used on connector-style alternator.

Parts

- 272089, E-30i with Air Compressor
- 272090, E-30i with Booster Heat and Air Compressor
- 272091, E-XP2i with Booster Heat and Air Compressor



Parts



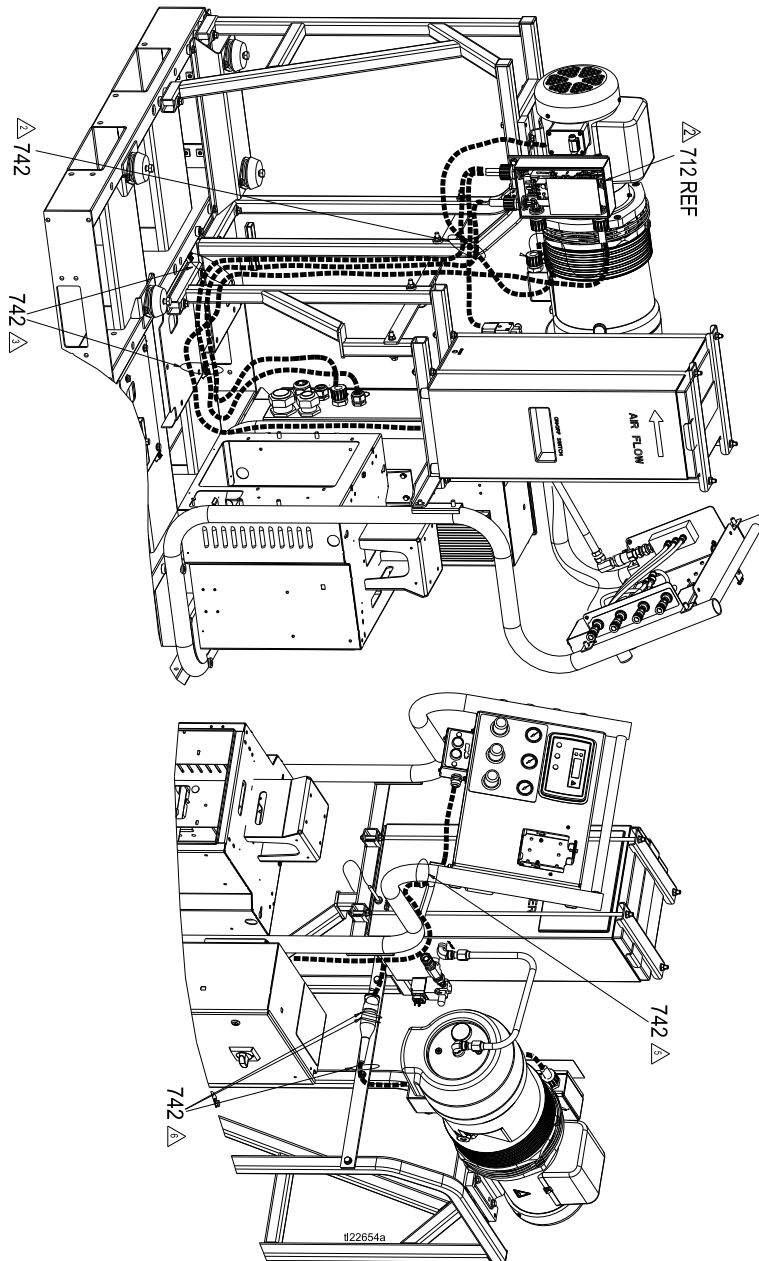
- 1 Apply anaerobic sealant to all non-swiveling pipe threads.
- 4 Use from safety label (55) or (283).

332637G

117

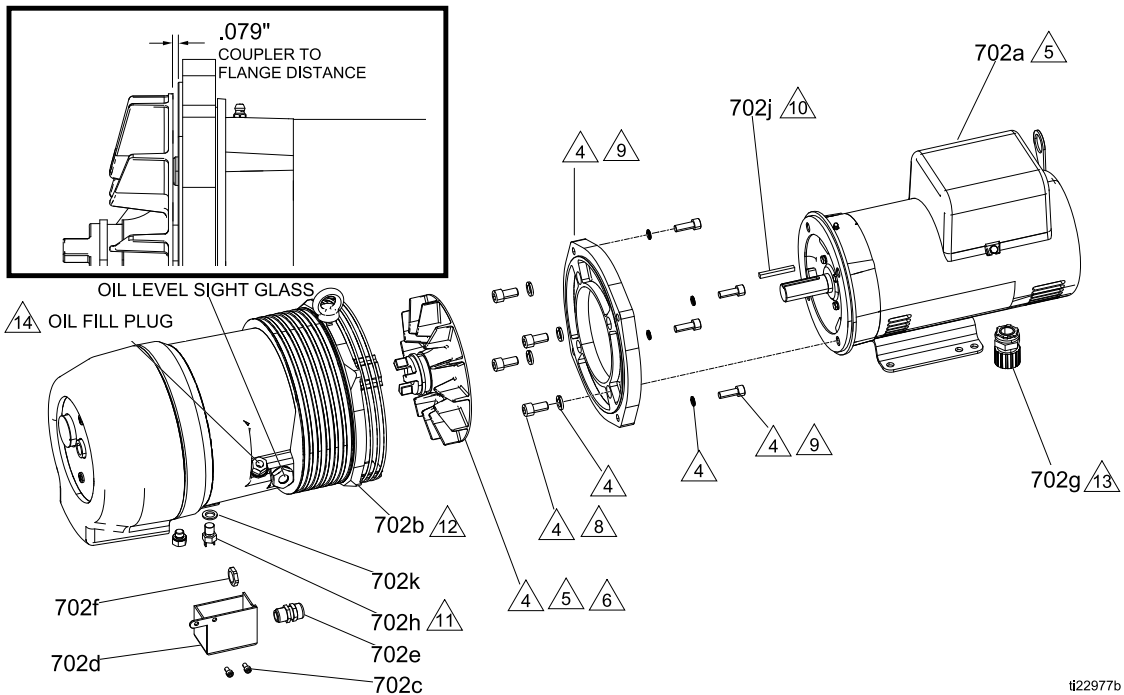
Parts

Cable Routing



- 2 Do not allow cables from starter box to touch engine. Secure all cables with cable ties (742) to frame approximately where shown ever 6–12 in. as needed.
- 3 Secure with cable ties (742) to pallet tie downs where shown.

Parts



ti22977b

- △4 Parts included with compressor (702b)
- △5 Coupler supplied with compressor (702b) needs to be pressed on to (motor (702a) as shown in detail view.
- △6 Torque to 20 ft.-lbs (27 N•m).
- △8 Torque to 34 ft.-lbs (46 N•m).
- △9 Torque to 36 ft.-lbs (43 N•m).
- △10 Discard key supplied with motor and replace with key (702j).
- △11 Discard plug supplied on compressor and install thermal switch (702h).
- △12 Discard lift ring to install flange.
- △13 Discard steel washer on (702g) before assembly.
- △14 Use only Hydrovane Fluid Force Red 2000 or CompAir CS-300 compressor oil. Fill to top of fill plug opening. One gallon container, Part No. 17A101, is available as an accessory.

Parts

Ref	Part	Description	Quantity		
			272089	272090	272091
701*	272079	Reactor, E-30i	1		
	272080	Reactor, E-30i with heat		1	
	272081	Reactor, E-XP2i with heat			1

* For parts, see [272079](#), [272080](#), and [272081](#), page 108.

Air Compressor Parts

All air compressor parts are included in the Air Compressor Accessory Kit. See [Accessories](#), page 13.

Ref.	Part	Description	Qty.	Ref.	Part	Description	Qty.
702	16Y567	COMPRESSOR, tankless, 5 hp; includes 702a-702k	1	716	15E511	FITTING, union, swivel 1/2 x 1/4	1
702a	127364	MOTOR, 5 hp	1	717	218093	HOSE, coupled; 1/2-14 npt, 22 in. (559 mm)	1
702b	- - -	COMPRESSOR, tankless	1	718	113505	NUT, keps, hex hd; #10	3
702c	107530	SCREW, cap, sch, hex	2	719	112958	NUT, hex, flanged; 3/8-16	12
702d	16X024	COVER overload switch	1	720	119865	SCREW, mach, hex serrated; 0.375 in. x 1/4-20	2
702e	260067	FITTING, strain relief, 1/2 npt	1	721	101577	SCREW, cap, hex hd; 0.375 in. x #10-24	3
702f	117625	NUT, locking	1	722	125856	SCREW, serrated flange; 0.375 in. x #8-32	3
702g	16M826	CORD, grip, 3/4 in.	1	723	121488	SCREW, hex hd, flanged; 2.75 in. x 3/8-16	10
702h	16Y809	SWITCH, thermal overload	1	724	113504	NUT, keps, hex hd	2
702j	16C282	KEY, square, 1/4	1	725	17H101	TUBE, compressor - air dryer	1
702k	127581	WASHER, bonded seal	1	726	111218	CAP, tube, square	2
703	127298	DRYER, air	1	730	125644	FITTING, branch tee, 1/2 npt	1
704	16W780	FRAME, air compressor	1	731	17A346	HOSE, rubber 5/16 in.; 6 ft (1.8 m)	1
705	16W685	FRAME, air dryer	1	732	156971	FITTING, nipple, short; 1/4-18 npt x 1/4-18 npt	1
706	16W689	BRACKET, clamp	1	733	16X520	VALVE, air, 3-way, din	1
707	16W843	ROD, threaded, 3/8-16	4	734	C19264	PLUG, pipe plug 1/4 in.	1
708	16W713	STRAP, frame connector	1	735	512910	MUFFLER, polyethylene 1/4 in." npt	1
709	24T849	ENCLOSURE, switch box	1	736	16X808	BRACKET, motor mount	2
710	16W577	ENCLOSURE, rear	1	737	112395	SCREW, cap, flng hd; 3/4 in. x 3/8-16	4
711	16W565	BRACKET, electrical box	1	738	111194	SCREW, cap flang hd; 2 in. x 3/8-16	6
712	24U083	STARTER, motor, reactor	1				
713	112538	FITTING, elbow, street, 90	1				
714	127108	FITTING, barbed 5/16 ID x 1/8 NPT	1				
715	C20679	FITTING, elbow; 1/2-14 npt x 7/8 un	2				

Parts

Ref.	Part	Description	Qty.	Ref.	Part	Description	Qty.
739	125163	CLAMP, hose, 7/32 in. – 5/8 in.		743	189285	LABEL, hot surface	1
740	16Y488	NUT, wire, #14-#6 awg	2	744	190451	UNION, adapter	1
741	106569	TAPE, electrical	1	745	125871	TIE, cable, 7.5 in.	3
742	261105	TIE, cable, 14 in.	10				

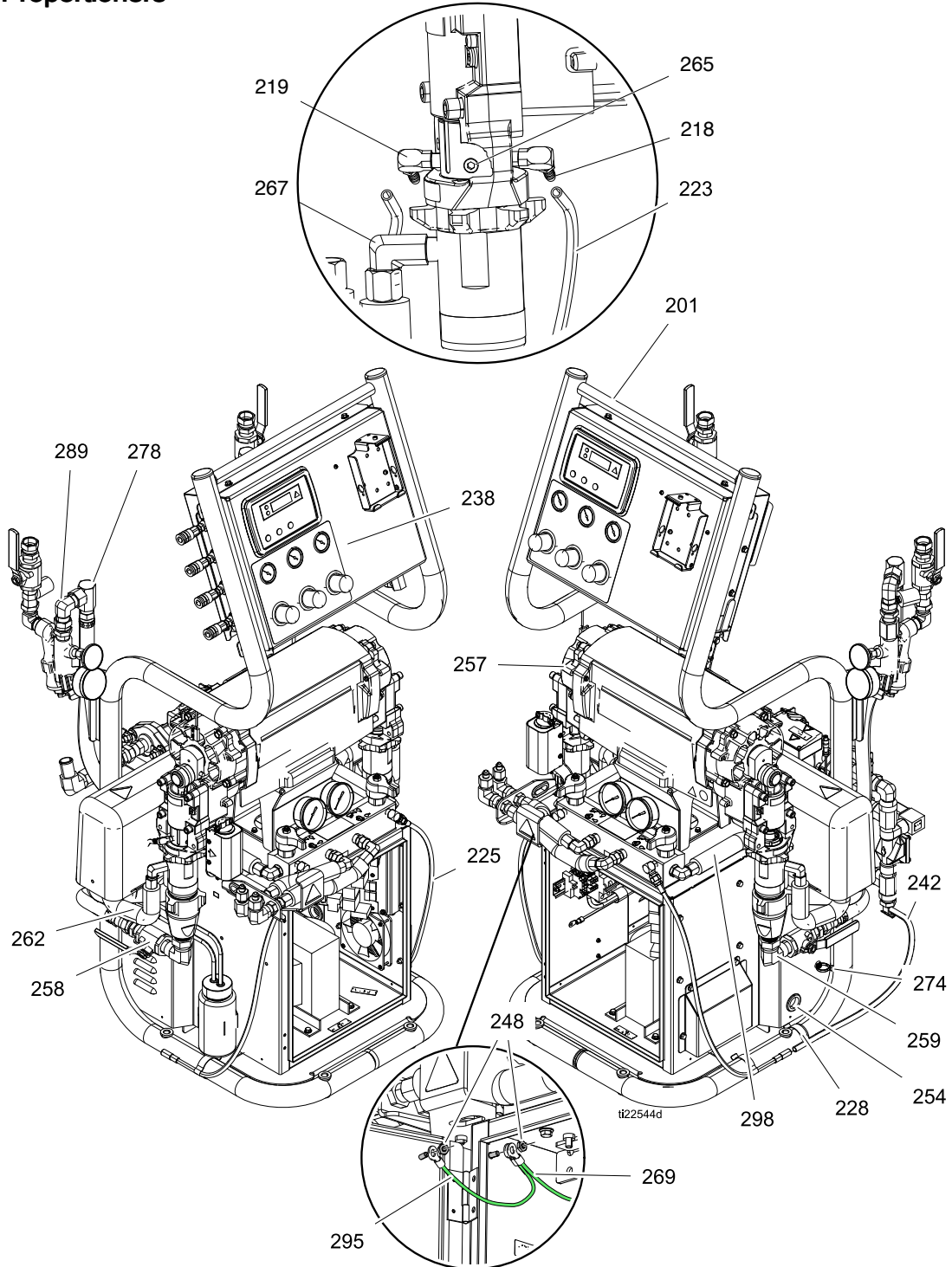
Replacement Warning labels, signs, tags, and cards are available at no cost.

332637G

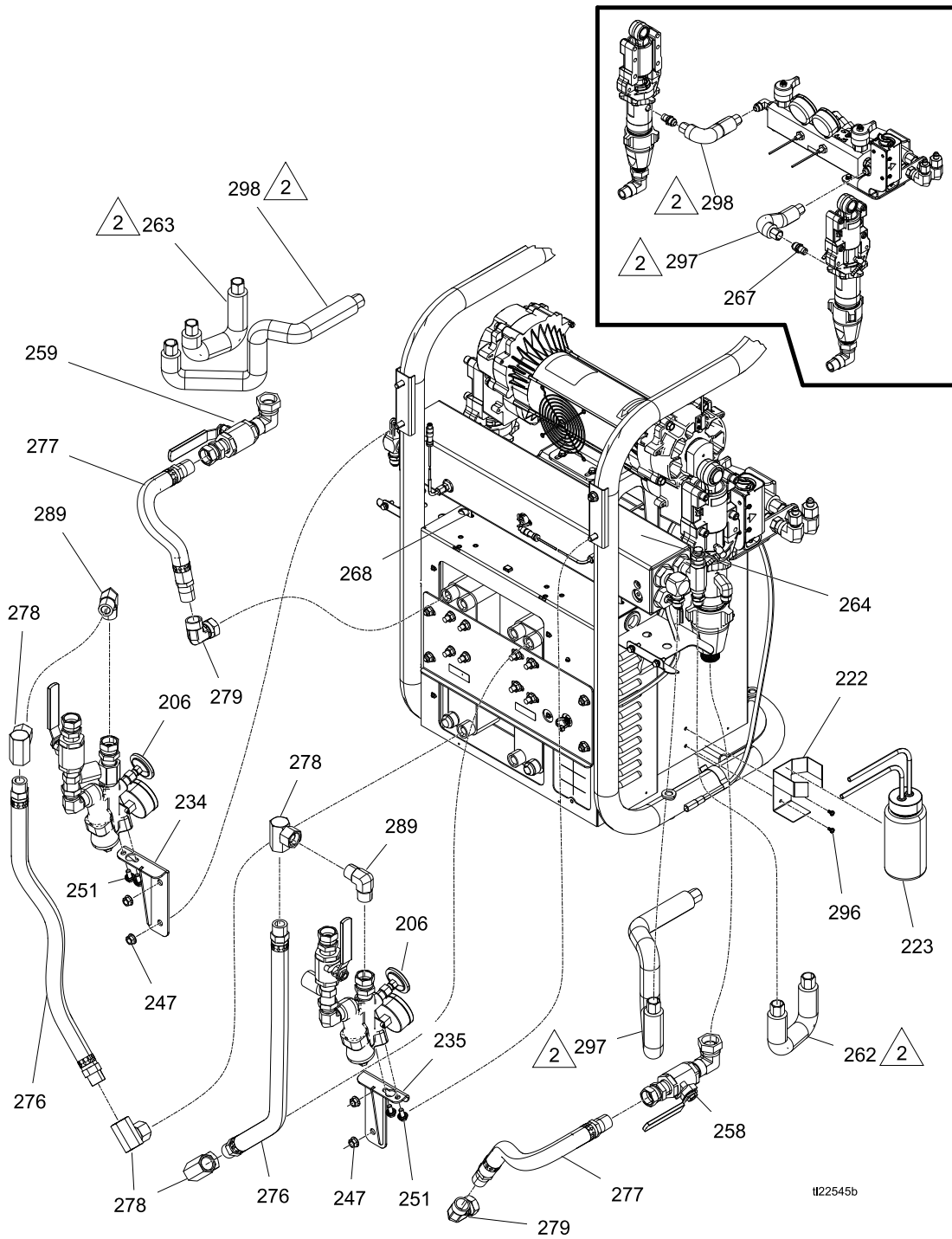
121

Parts

Proportioners



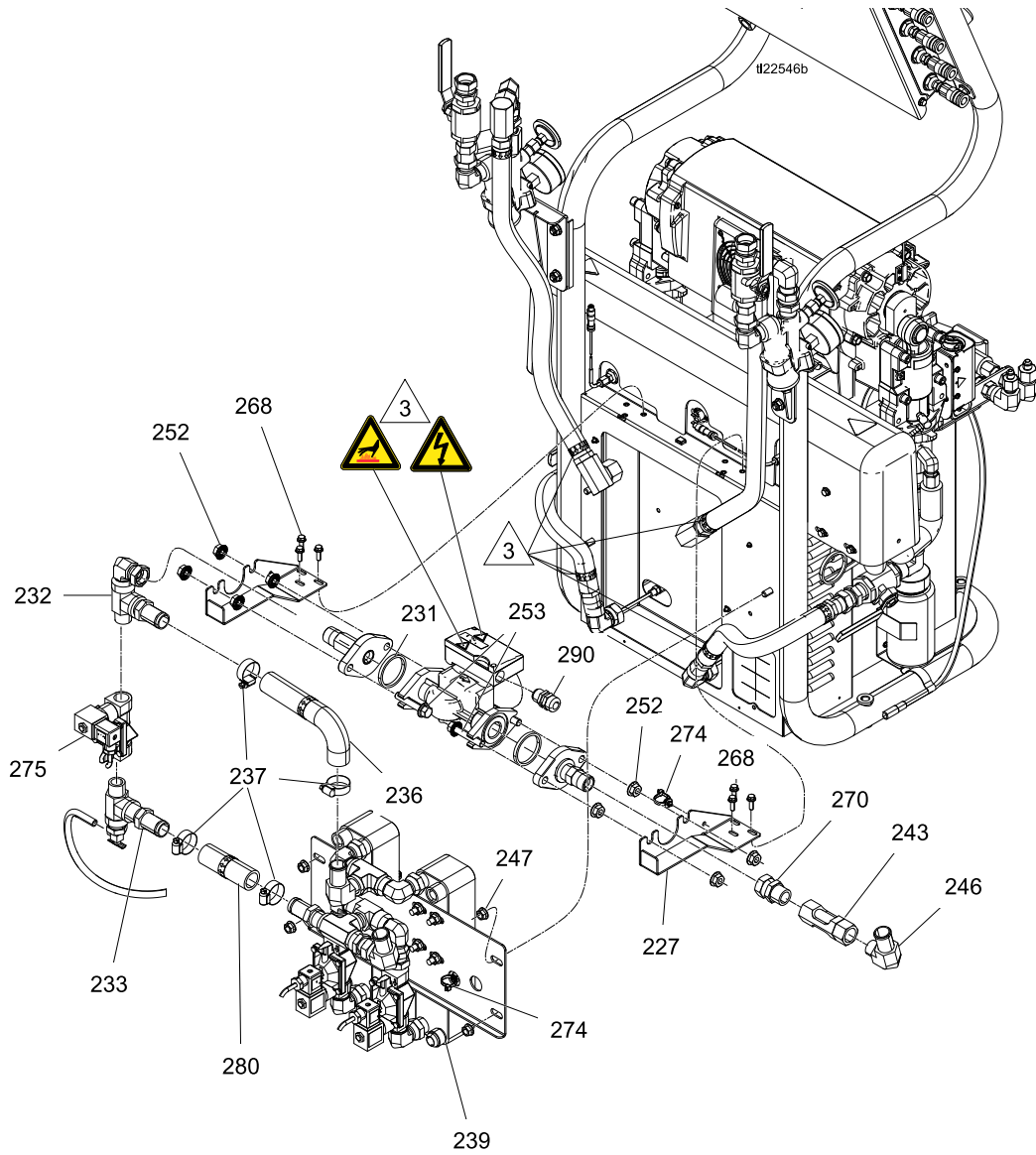
Parts



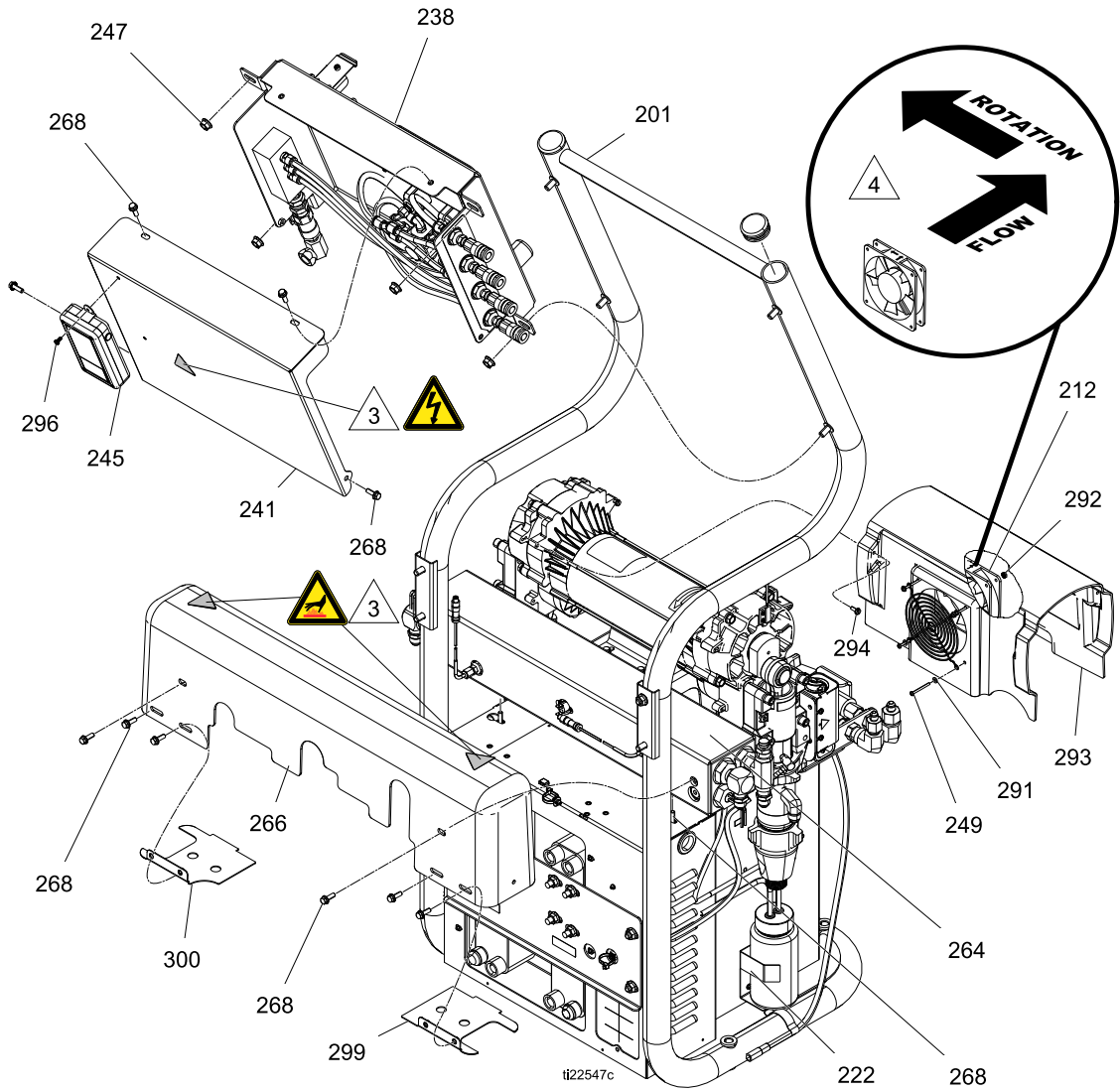
332637G

123

Parts



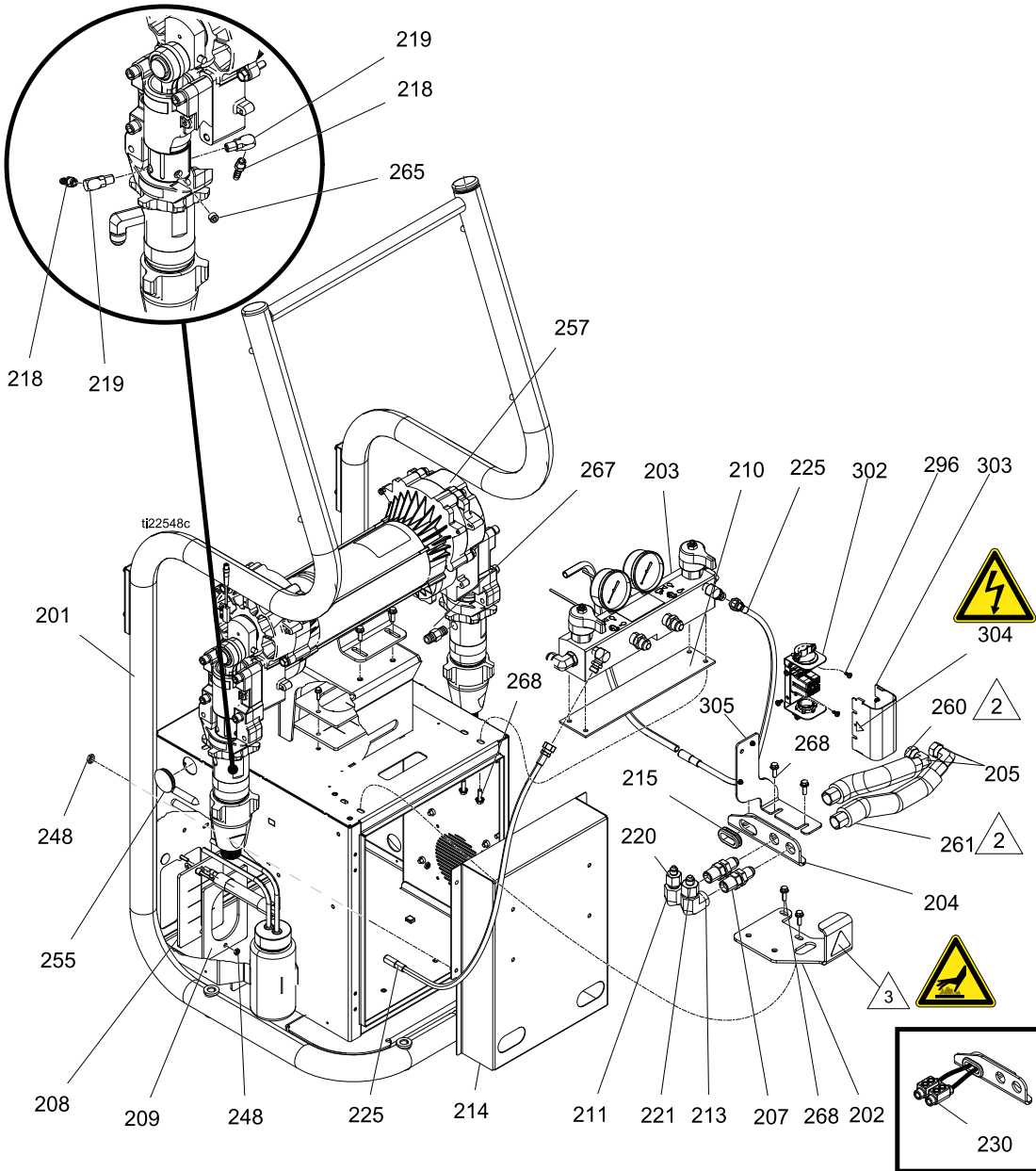
Parts



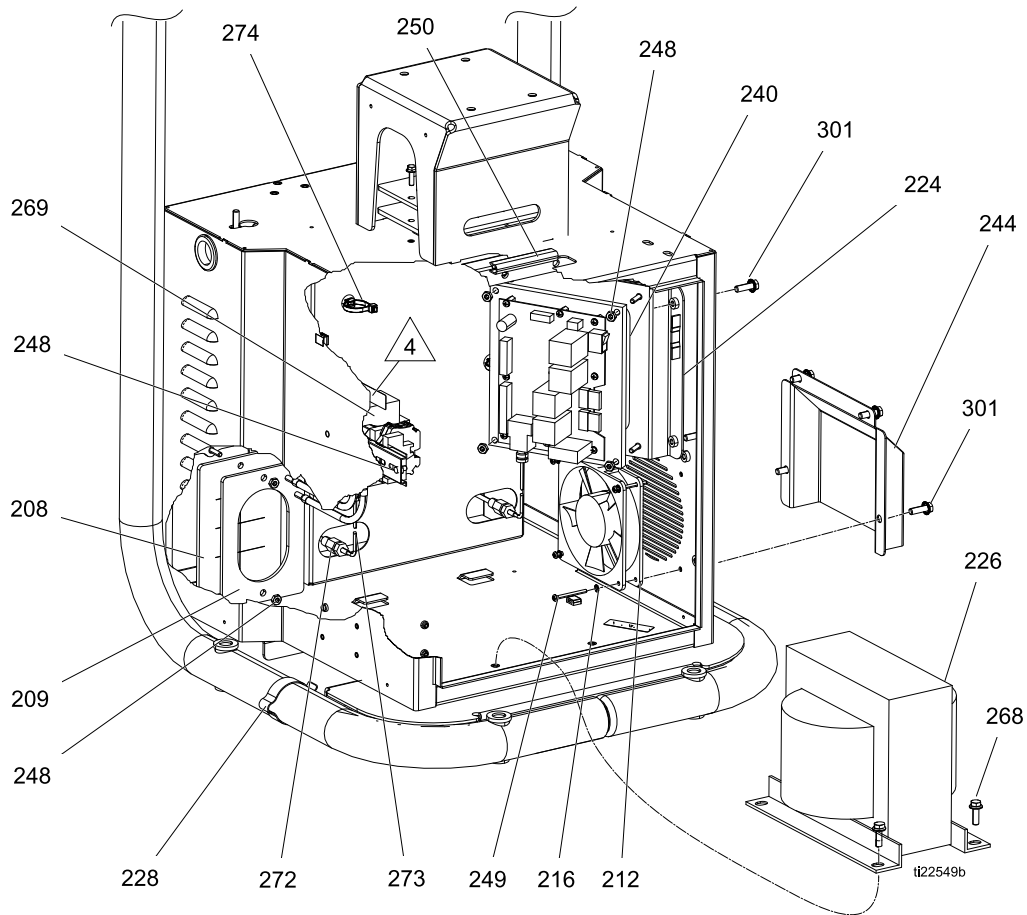
332637G

125

Parts



Parts



- 1 Apply anaerobic polyacrylate pipe sealant to all non-swiveling pipe threads.
- 2 Apply grease to tube fitting threads. Torque to 43 ft-lbs (58 N•m).

- 3 Safety and warning labels are from label sheet (283).
- 4 Fan air flow towards motor.

Parts

Ref	Part	Description	Quantity		
			E-30i	E-30i with Booster Heat	E-XP2i with Booster Heat
201	- - -	FRAME	1	1	1
202	16W233	BRACKET, tube guard	1	1	1
203	24T870	MANIFOLD, fluid	1	1	1
204	16W235	BRACKET, tube mount	1	1	1
205	16W608	FITTING, elbow 8jic swivel x 8jicm	2	2	2
206	24V143	KIT, assembly, pair, inlet	1	1	1
207	16W611	FITTING, bulk hd 1/2 nptm x 8 jicm	2	2	2
208	15H189	BOOT, wire feed through	2	2	2
209	15G816	COVER, plate, wire way	2	2	2
210	15B456	GASKET, manifold	1	1	1
211	16W609	FITTING, elbow 1/2 nptf x 8 jicm	1	1	1
212	24R756	FAN, cooling, 120 mm, 24 vdc	2	2	2
213	16W610	FITTING, elbow 1/2 nptf x 10 jicm	1	1	1
214	16J758	COVER, heat exchanger	1	1	1
215	16W648	GROMMET, rubber, 1.0 ID x 1.5 OD	1	1	1
216	103181	WASHER, lock ext	4	4	4
217	112125	PLUG, tube	2	2	2
218	116746	FITTING, barbed, plated; 1/8-27 npt x 1/4 in. I.D. hose	2	2	2
219	191892	FITTING, elbow, street, 90°; 1/8 npt	2	2	2
220	117502	FITTING, reducer #5 x #8 (JIC)	1	1	1
221	117677	FITTING, reducer #6 x #10 (JIC)	1	1	1
222	16X531	BRACKET, reservoir, lube	1	1	1
223	246995	RESERVOIR, bottle, assembly	1	1	1
224	16W183	BRACKET, load center	1	1	1
225	16W043	TUBE, pressure relief	2	2	2
226	15K742	TRANSFORMER, 4090 va, 230/90	1	1	1
227	16H761	BRACKET, mounting, pump	2	2	2
228	186494	CLIP, spring	3	3	3
229	255716	KIT, heater wire connector		1	1
230	261821	CONNECTOR, wire, 6 AWG	2	2	2

Parts

Ref	Part	Description	Quantity		
			E-30i	E-30i with Booster Heat	E-XP2i with Booster Heat
231	24L915	PUMP, centrifugal, circulation	1	1	1
232	24J699	KIT, fitting, pump	1	1	1
233	24K286	KIT, fitting, drain	1	1	1
234	16W191	BRACKET, strainer, left	1	1	1
235	16W193	BRACKET, strainer, right	1	1	1
236	125170	HOSE, formed, 1 in. ID, lower	1	1	1
237*	125371	CLAMP, hose, dia. 3/4-1-3/4 in.	4	4	4
238	24K385	PANEL, air control	1	1	1
239	24K381	EXCHANGER, heat, assembly	1	1	1
240	24L957	BOARD, load center	1	1	1
241	16H880	COVER, air panel	1	1	1
242*	- - -	HOSE, rubber, 5/16 in.	2	2	2
243●	- - -	INDICATOR, flow, sight	1	1	1
244	16W184	COVER, fan	1	1	1
245	16X118	MODULE, cellular, GPS	1	1	1
246	125477	FITTING, 1 in. beaded barb x 3/4 nptm	1	1	1
247	112958	NUT, hex, flanged	12	12	12
248	113505	NUT, keps, hex hd	13	13	13
249	117683	SCREW, mach, phil pan hd; 1.5 in. x #6-32	8	8	8
250	126033	TRIM, edge; 0.33 ft (0.1 m)	1	1	1
251	111800	SCREW, cap, hex hd; 0.625 in. x 5/16-18	4	4	4
252	125943	NUT, serrated flange; 7/16-14	8	8	8
253	125944	SCREW, serrated flange; 2.25 in. x 7/16-14	4	4	4
254	114269	GROMMET, rubber	1	3	3
255	126043	PLUG, cap, 1.25 diameter hole	2		
256	126044	PLUG, cap, .75 diameter hole	2		
257	24V152	PROPORTIONER, module, E-30i, no heat; see Dual Zone 4.0 Kw Fluid Heater	1	1	
	24V153	PROPORTIONER, module, E-XP2i; see Dual Zone 4.0 Kw Fluid Heater			1
258-1❖	- - -	FITTING, A side, inlet, E-30	1	1	
258-2❖	- - -	FITTING, A side, inlet, E-XP2			1
259-3❖	- - -	FITTING, B side, inlet, E-30	1	1	
259-4❖	- - -	FITTING, B side, inlet, E-XP2			1
260	16W206	TUBE, A-side, hose outlet	1	1	1
261	16W207	TUBE, B-side, hose outlet	1	1	1

332637G

129

Parts

Ref	Part	Description	Quantity		
			E-30i	E-30i with Booster Heat	E-XP2i with Booster Heat
262	16W199	TUBE, A-side, inlet		1	1
263	16W202	TUBE, B-side, inlet		1	1
264	24V145	HEATER, assy, 4.0kw, hybrid, 2 zone; see Dual Zone 4.0 Kw Fluid Heater		1	1
265	104765	PLUG, pipe, headless	2	2	2
266	16K361	COVER, horizontal heater		1	1
267	121311	FITTING, connector, 3/8-18 npt x 1/2 jic	2		
	125643	FITTING, elbow, 3/8 npt x #8 jic		2	2
268	113796	SCREW, flanged, hex hd; 3/4 in. x 1/4-20	24	32	32
269	17H073	MODULE, breaker, hose, int reactor	1	1	1
270●	157785	FITTING, swivel; 3/-14 nps x 3/4-14 npt	1	1	1
271	16K646	HARNESS, dc, valve, coolant	1	1	1
272◆	---	FITTING, compression, 1/8 npt, ss	2	2	2
273◆	---	SENSOR, RTD, 1 kohm, 4 pin, 4.25 in.	2	2	2
274	125625	TIE, cable, fir tree	9	9	9
275*	24L916	VALVE, solenoid, 3/4 npt, 12 VDC	1	1	1
276	16K312	HOSE, coupled, 26 in. (660 mm)	2	2	2
277	16K311	HOSE, coupled, 18 in. (457 mm)	2	2	2
278	156589	FITTING, union, adapter, 90°; 3/4 nptf x 3/4 npsm, 1.25 in.	4	4	4
279	125535	FITTING, #12 jic swivel x 3/4 npt(m)	2	2	2
280*	---	HOSE, coolant, 1 in. ID, bulk; 0.33 ft. (0.1 m)	1	1	1
281	115836	GUARD, finger	1	1	1
282	125857	SCREW, serrated flange, hex hd; .625 in. #10-24	2	2	2
283	16W612	LABEL, safety	1	1	1
284	198586	CONDUIT, corrugated	1	1	1
287✱	261843	FLUID, oxide inhibitor	1	1	1
288✱	125871	TIE, cable, 7.50 in.	8	8	8
289	295847	FITTING, elbow, 90°, 3/4 npt	2	2	2
290	260067	FITTING, strain relief, 1/2 npt	1	1	1
291	151395	WASHER, flat	4	4	4
292	127278	NUT, keps, hex; #6-32	4	4	4
293	16W765	COVER, motor	1	1	1

Parts

Ref	Part	Description	Quantity		
			E-30i	E-30i with Booster Heat	E-XP2i with Booster Heat
294	118444	SCREW, mach, slot hex wash hd; 1/2 in. x #10-24	4	4	4
295	194337	WIRE, grounding, door	1	1	1
296	16X129	SCREW, mach, phillips, tooth washer, .375 in. x #8-32	11	11	11
297	16W201	TUBE, A-side, outlet		1	1
	16W204	TUBE, A-side, outlet	1		
298	16W203	TUBE, B-side, outlet		1	1
	16W205	TUBE, B-side, outlet	1		
299	17A064	GUARD, heater, A-side		1	1
300	17A066	GUARD, heater, B-side		1	1
301	113161	SCREW, flanged, hex hd; 1/2 in x 1/4-20	8	8	8
302	24W204	ENCLOSURE, terminal block	1	1	1
303	25A234	ENCLOSURE, cover	1	1	1
304	189930	LABEL, caution	1	1	1
305	17G461	BRACKET, termination box	1	1	1

Replacement Warning labels, signs, tags, and cards are available at no cost.

Purchase Relay Repair Kit 24L958; includes four relays. Purchase Fuse Repair Kit 24L959; includes two fuses..

* Order 125774 Valve Repair Kit to replace all internal valve parts. Order 125787 Coil Repair Kit to replace coil.

◆ Included in RTD Repair Kit 24L972.

● Included in Sight Glass Kit 24L921.

* Included in Complete Coolant Hose Kit 24L939. See [Complete Coolant Hose Kit, page 132](#)

❖ Included in Pump Inlet Assembly Kit. See [Pump Inlet Assembly Kits, page 132](#).

+ See [Electrical Schematics, page 156](#).

✘ Not shown.

Series A only.

For series A only order Kit No. 24T059.

Parts

Pump Inlet Assembly Kits

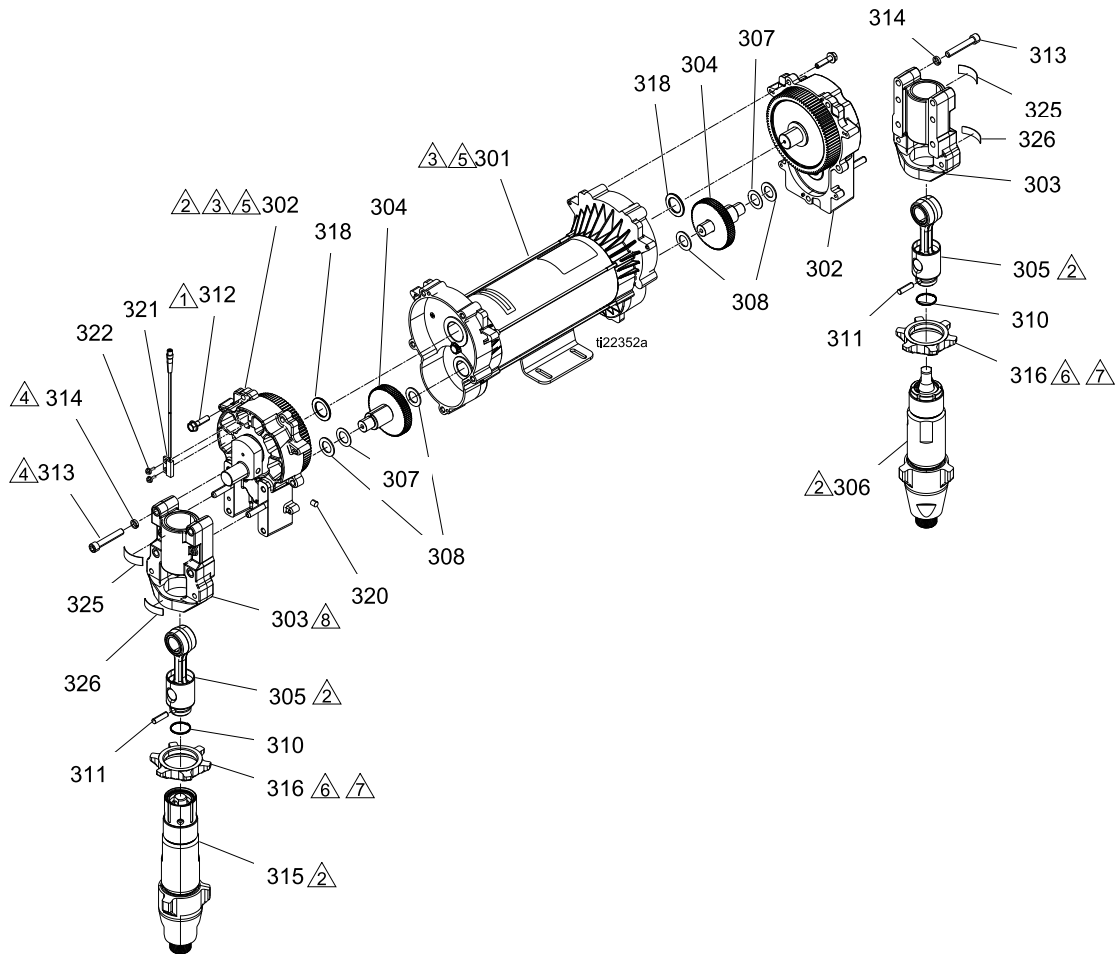
Description	Kit	Includes:		
E-30i A Side	24L926	258-1	277	279
E-30i B Side	24L927	259-3	277	279
E-XP2i A Side	24L928	258-2	277	279
E-XP2i B Side	24L929	259-4	277	279
Qty:		1	1	1

Complete Coolant Hose Kit, 24L939

Ref	Description	Qty.
Systems		
36a	HOSE, coolant, 1 in. ID, 2.66 ft (0.81 m)	1
36b	HOSE, coolant, 1 in. ID, 2.92 ft (0.89 m)	1
37	CLAMP, hose, dia. 11/16-1-1/2 in.	2
40	CLAMP, hose, 7/32-5/8 in.	6
Proportioners, page 122		
237	CLAMP, hose, dia. 3/4-1-3/4 in.	4
242	HOSE, rubber, 5/16 in., 1 ft (0.3 m)	2
280	HOSE, coolant, 1 in. ID, 0.33 ft (0.1 m)	1
22 kW Diesel Generator, page 142		
562	CLAMP, hose, dia. 3/4-1-3/4 in.	1
Radiator		
620	HOSE, formed, 1-1/4 upper radiator	1
621	HOSE, coolant, 1 in. ID; 6 in. (152.4 mm)	1
622	CLAMP, hose, dia. 3/4-1-3/4 in.	4
623	CLAMP, hose, dia. 11/16-1-1/2 in.	2
627	HOSE, formed, 1-1/4 lower radiator	1
628	HOSE, 1 in. ID; 0.271 ft (0.08 m)	1
629	HOSE, 5/16 in. ID; 1.5 ft (0.5 m)	1
640	HOSE, formed, 1-1/4 upper engine	1
641	CLAMP, hose 7/32 in. - 5/8 in.	4
642	HOSE, formed, 1-1/4 lower engine	1

Parts

Proportioner Module
24V152, Module for E-30i
24V153, Module for EXP2i



- △₁ Torque to 190–120 in-lbs (21–24 N•m).
- △₂ Lubricate threads with ISO oil or grease. Assemble pump cylinders flush to one full thread under-flush of housing surface.
- △₃ Apply grease to all gear teeth proportionally, motor pinion and drive housing.
- △₄ Torque to 20–30 ft-lbs (27–40.6 N•m).
- △₅ Crankshaft must be in line with crankshaft at other end of motor.
- △₆ Torque to 70–80 ft-lbs (95–108 N•m).
- △₇ Flat side faces up.

332637G

133

Parts

Ref	Part	Description	Quantity	
			24V152	24V153
301	24U051	MOTOR, brushless, double ended, 2 hp	1	1
302+	- - -	HOUSING, drive, mark vii	2	2
303	257355	HOUSING, bearing	2	
	245927	HOUSING, bearing		2
304◆	287290	KIT, repair, gear	2	2
305●	241279	KIT, rod, connecting	2	2
306	245971	PUMP, displacement, B		1
	245972	PUMP, displacement, A	1	
307◆	114699	WASHER, thrust; copper colored	2	2
308◆	114672	WASHER, thrust; steel colored	4	4
310●	183169	SPRING, retaining	2	2
311	183210	PIN, str, hdls	2	2
312+	15C753	SCREW, mach, hex wash hd	10	10
313	114666	SCREW, cap, socket head	8	8
314	106115	WASHER, lock (hi-collar)	8	8
315	246831	PUMP, displacement, A		1
	246832	PUMP, displacement, A	1	
316	193394	NUT, retaining	2	
	193031	NUT, retaining		2
318+	116192	WASHER, thrust	2	2
320	116618	MAGNET	1	1
321	24T878	SWITCH, reed, m8 4-pin	1	1
322	127301	SCREW, hxhd, thd cut, 4-40 x .375	2	2
325	187437	LABEL, torque	2	2
326	192840	LABEL, warning	2	2

Replacement Warning labels, signs, tags, and cards are available at no cost.

See Pump Repair manual 309577 for repair kits.

- Spring (310) included in 241279 Connecting Rod Kit.

Replacement Warning labels, signs, tags, and cards are available at no cost.

Parts included in Kit xxxxxx (purchase separately).

*

◆

- ◆ Gear Repair Kit includes washers (307) and (308).

- + Drive Housing Repair Kit includes housing (1), screws (5), and washer (1) to replace one end.

●

■

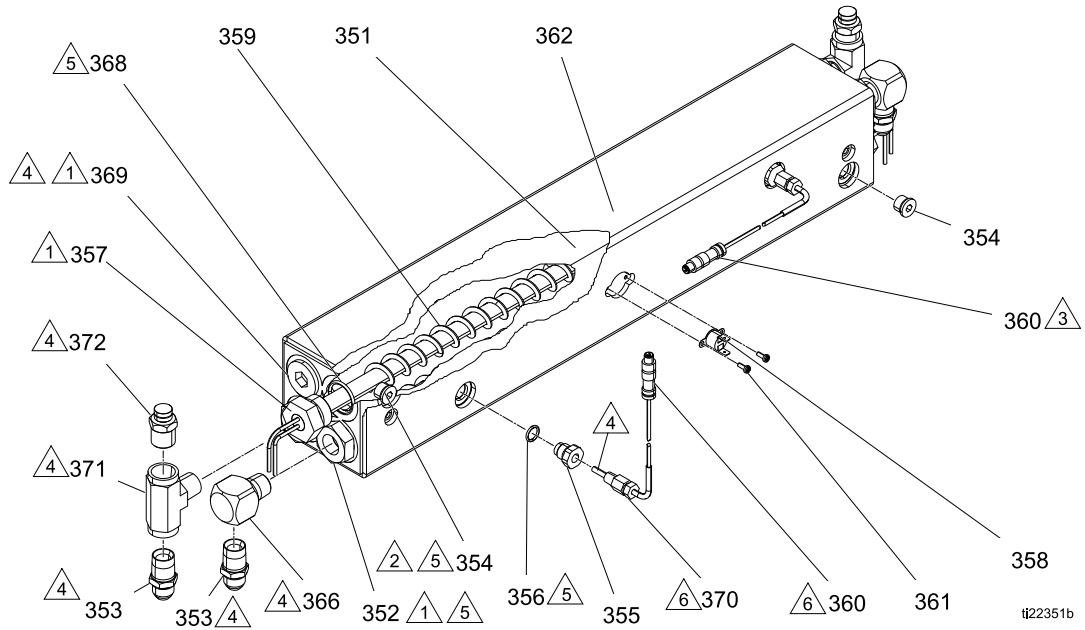
*

◆

+

Parts

**Dual Zone 4.0 Kw Fluid Heater
24V145**



- △1 Torque to 120 ft-lbs (163 N•m).
- △2 Torque to 23 ft-lbs (31 N•m).
- △3 Apply thermal paste.
- △4 Apply pipe sealant and PTFE tape to all non-swiveling threads and threads without o-rings.
- △5 Apply lithium grease lubricant to o-rings before assembling in block (1).
Remove tape from probe tip and Orientate sensor as shown. Insert probe until it bottoms on heating element.
- △6 Tighten ferrule on sensor probe one turn past finger tight or 16 ft-lbs. (21.6 N•m).

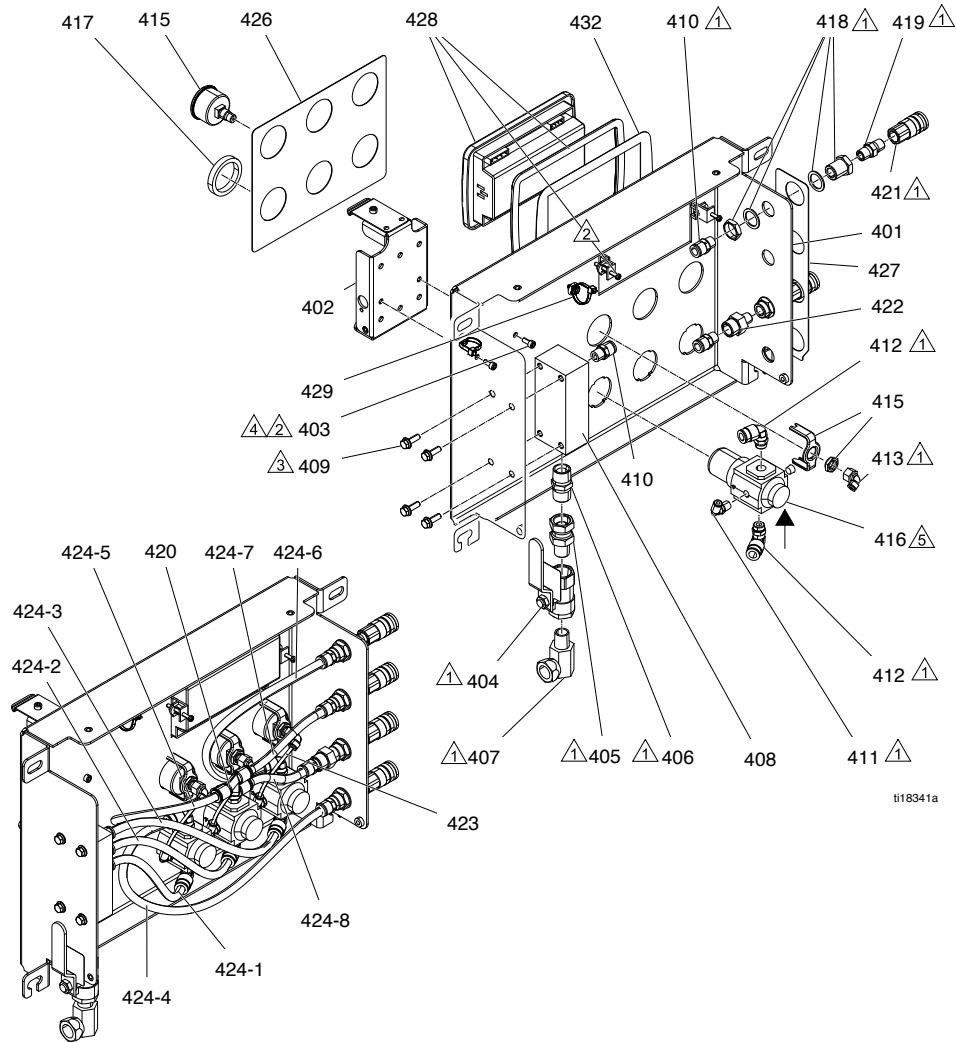
Parts
24V145

Ref	Part	Description	Qty	Ref	Part	Description	Qty
351	15M878	BLOCK, horizontal	1	361	124131	SCREW, machined, pan hd, 0.375 in. (9.5 mm), #6-32	2
352	15H302	REDUCER, #14 SAE x 1/2-14 NPT(f)	4	362	15M177	INSULATOR, foam, heater, horizontal	1
353	121319	ADAPTER, 1/2-14 NPT x #8 JIC	4	366	158683	ELBOW, 90°, 1/2-14 NPT x 1/2-14 NPT	2
354	15H304	PLUG, 9/16 SAE	2	368	124132	O-RING, fluoroelastomer	4
355	15H306	ADAPTER, 9/16-18 x 1/8-27 NPT(f)	2	369	15H305	PLUG, hollow hex 1-3/16 SAE	2
356	120336	O-RING, packing	2	370*	-	COMPRESSION, 1/8 NPT, SST	2
357	17A092	HEATER, immersion, (2000W, 230V)	1	371	125644	BRANCH TEE, 1/2 NPT	2
358	15B137	SWITCH, over temperature	1	372	248187	KIT, rupture disc assembly	2
359	15B135	MIXER, immersion heater	2				
360*	-	SENSOR, RTD, 1 kohm, 90°, 4 pin, tip	2				

* Included in 24L973 Heater RTD Repair Kit.

Parts

Air Control Panel



- △1 Apply pipe sealant to all non-swiveling pipe threads.
- △2 Apply anaerobic thread sealant to threads.
- △3 Torque to 25 +/- 2 ft-lbs (34 N•m)

- △4 Torque to 10 +/- 2 ft-lbs (14 N•m)
- △5 See parts illustration for air flow direction.

Ref	Part	Description	Qty	Ref	Part	Description	Qty
401	16H452	BRACKET, air control	1	405	190451	UNION, adapter, 1/2 NPT x 1/2 NPSM	1
402	277853	BRACKET, mounting, booth control	1	406	158491	NIPPLE, 1/2-14 NPT	1
403	117026	SCREW, SHCS, 0.5 in. (12 mm), M5 x 0.8	2	407	155470	SWIVEL, union, 90°, 1/2-14 NPSM x 1/2-14 NPT	1
404	113331	VALVE, ball, vented, 1/2 in.	1	408	16H482	MANIFOLD, 1/2 NPT x 1/4 NPT	1

332637G

137

Parts

Ref	Part	Description	Qty	Ref	Part	Description	Qty
409	113796	SCREW, flanged, hex hd, 0.75 in. (19 mm), 1/4-20	4	420	125539	UNION, Y, 3/8 OD tubing	1
410	122161	FITTING, air, 1/4 NPT x 3/8 OD	7	421	114558	COUPLER, line, air, 1/4-18 NPT	4
411	124287	FITTING, adapter, 1/2 npt(m) x #8 JIC(m), ms	3	422	16H531	FITTING, flow control, 1/4-18 NPT	1
412	115841	FITTING, elbow, 1/4 NPT(f) x 3/8 OD	6	423	—	TUBE, nylon, round, black	1
413	15T498	FITTING, 90°, swivel, 5/32 OD x 1/8 NPT(f)	3	424	—	HOSE, nylon, 250 psi; see identification table	9
415	116257	GAUGE, pressure, 0-160 psi (0-1 MPa, 0-11 bar)	3	426	16K325	LABEL, instructions	1
416	116513	REGULATOR, air	3	427	16K326	LABEL, instructions	1
417	116514	NUT, regulator, plastic	3	428	24M665	MODULE, engine controller	1
418	104641	BULKHEAD, 1 in. (25.4 mm), 3/4-20 x 1/4-18 NPT	4	429	125625	TIE, cable, fir tree	2
419	156971	NIPPLE, short, 1/4-18 NPT	4	432	16K940	LABEL	1

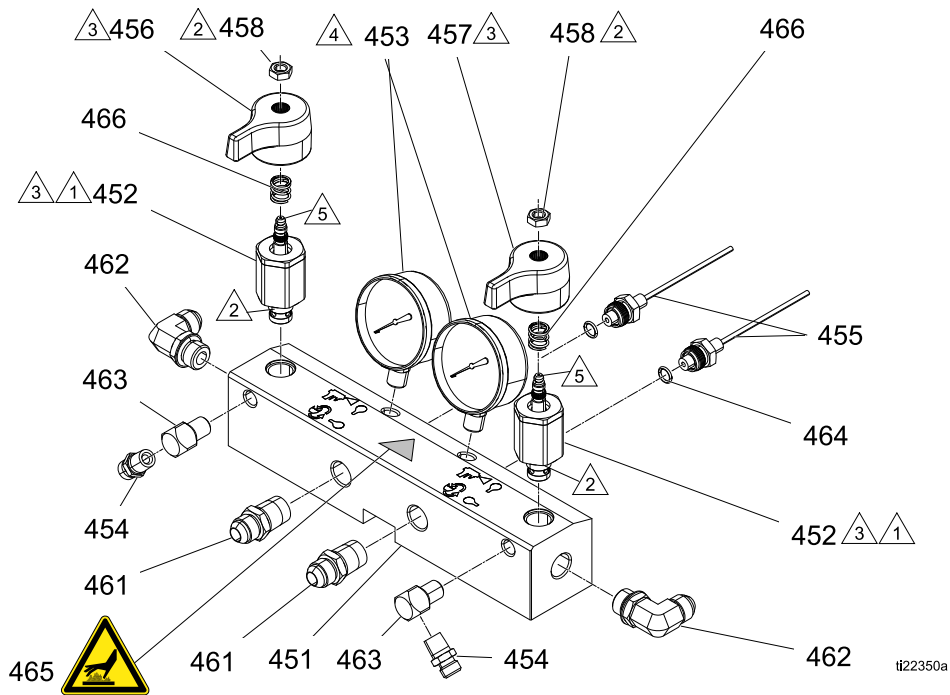
Replacement Warning labels, signs, tags, and cards are available at no cost. Included in Tubing Repair Kit 24M650.

424 Identification Table

Ref	Length in. (mm)	Qty.
424-1	11 (279.4)	1
424-2	13.5 (342.9)	1
424-3	16.5 (419.1)	1
424-4	16 (406.4)	1
424-5	16.5 (419.1)	1
424-6	15 (381)	1
424-7	6.5 (165.1)	1
424-8	5.5 (139.7)	1
423	4 (101.6)	3

Parts

**Fluid Manifold
24T870**



- Torque to 355–395 in.-lbs (40–44.6 N•m)
- Apply sealant (113500) to threads.
- Valve must be closed with handle position as shown on drawing.
- Apply PTFE tape and thread sealant to gauge threads.
- Apply grease on valve.
- ** Apply PTFE tape or thread sealant to tapered threads.

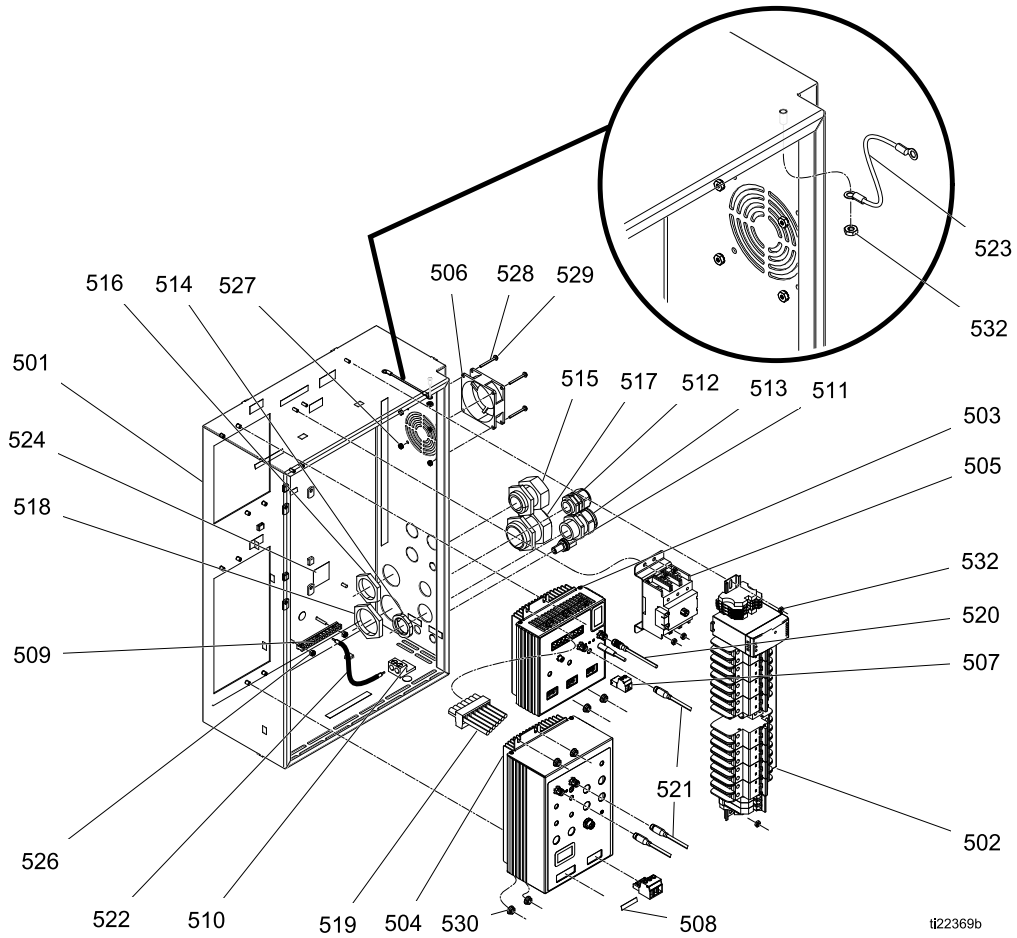
Ref	Part	Description	Qty	Ref	Part	Description	Qty
451	255228	MANIFOLD, fluid	1	462	121312	ELBOW, male, 3/4 SAE x 1/2 JIC	1
452	247824	KIT, valve, cartridge, drain	2	463	100840	ELBOW, street, 1/4–18 npt x 1/4–18 npt	1
452a	158674	O-RING, BUNA-N	1	464	111457	O-RING, PTFE	2
452b	247779	SEAL, seat, valve	1	465	189285	LABEL, hot surface	1
453	102814	GAUGE, press, fluid	2	466	150829	SPRING, compression	2
454	162453	FITTING, 1/4 NPSM X 1/4 NPT	2	<i>Replacement Warning labels, signs, tags, and cards are available at no cost.</i> <i>Included in the following complete valve kits:</i> <i>ISO Valve Kit (left/red) handle 255149.</i> <i>Resin Valve Kit (right/blue handle) 255150.</i> <i>Valve Set Kit (both handles and grease gun) 255148.</i>			
455	15M669	SENSOR, pressure, fluid outlet	2				
456	247788	HANDLE, red	1				
457	247789	HANDLE, blue	1				
458	112309	NUT, hex, jam	2				
461	124287	FITTING, adapter, 7/8, 1/2–1/4 nptm x #8 JIC					

332637G

139

Parts

Electrical Enclosure



t22369b

Parts

Electrical Enclosure

Ref.	Part	Description	Qty.	Ref.	Part	Description	Qty.
501	- - -	ENCLOSURE, electrical, power	1	517	127253	BUSHING, strain relief, m50 thread	1
502	24T061	MODULE, BREAKER, integr reactor	1	518	127254	NUT, strain relief, m50 thread	1
503	24U855	MODULE, TCM	1	519	24T174	HARNESS, control box	1
504	24U832	MODULE, MCM	1	520	24R735	CABLE, CAN power, m12 fem, pigtail	1
505	24T060	MODULE, disconnect	1	521	121000	CABLE, CAN, female / female 0.5m	2
506	24R757	FAN, COOLING, 80MM, 24VDC	1	522	125859	WIRE, chassis, ground	1
507	24R754	CONNECTOR, power, male, 2 pin	1	523	194337	WIRE, grounding, door	1
508	123143	CONNECTOR, power, male, 4 pin	1	524	16W456	LABEL, identification	1
509	122313	BAR, ground, kit	1	526	109466	NUT, lock hex	2
510	117666	TERMINAL, ground	1	527	127278	NUT, keps, hex	4
511	121612	CONNECTOR, thru, m12, mxf	1	528	151395	WASHER, flat	4
512	121603	GRIP, cord,.51-.71,3/4	1	529	117683	SCREW, mach, phil pan hd	4
513	126881	BUSHING, strain relief	1	530	115942	NUT, hex, flange head	8
514	126891	NUT, bushing	1	531	103473	STRAP, tie, wire	8
515	120858	BUSHING, strain relief, m40 thread	1	532	113505	NUT, keps, hex hd	7
516	120859	NUT, strain relief, m40 thread	1				

See [Electrical Schematics, page 156](#).

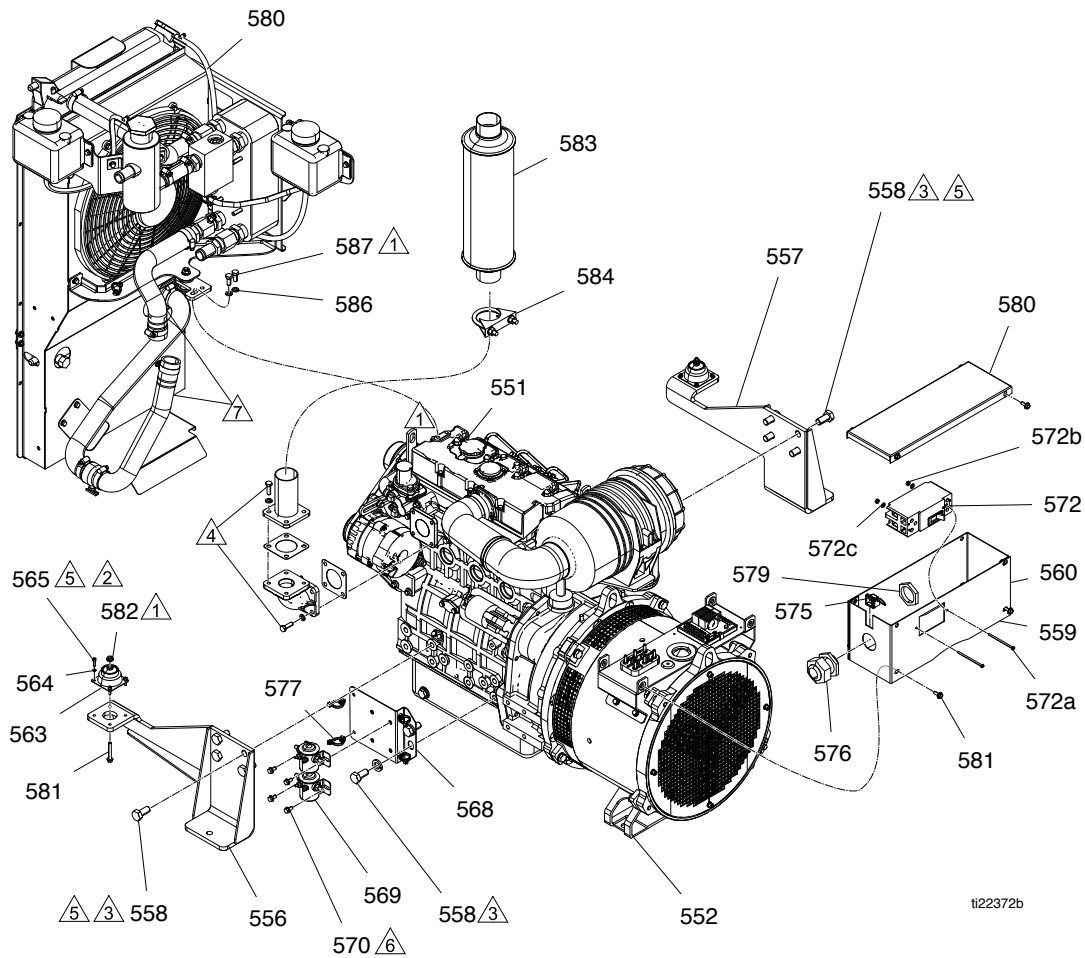
✘ Not shown.

332637G

141

Parts

22kW Diesel Generator



ti22372b

- | | | | |
|---|---|---|--|
| 1 | Torque to 26 ft-lbs (35.25 N•m) | 5 | Apply sealant (blue) to threads. |
| 2 | Torque to 15 ft-lbs (20 N•m) | 6 | Torque to 15–20 in.-lbs (1.7–2 N•m) |
| 3 | Torque to 100 ft-lbs (135.6 N•m) | 7 | Apply lubrication to engine end of hose prior to assembly. |
| 4 | Torque to 40 ft-lbs (54 N•m). Parts included with engine. | | |

Parts

22kW Diesel Generator

Ref	Part	Description	Qty.	Ref	Part	Description	Qty.
551	—	ENGINE, diesel, Perkins	1	572	24L965	CIRCUIT, breaker, 90A	1
552	24R079	ALTERNATOR, 22 kw, diesel engine	1	572a		SCREW	2
556	16J883	BRACKET, engine mount, left	1	572b		WASHER	2
557	16J884	BRACKET, engine mount, right	1	572c		NUT	2
558	125532	SCREW, M14 hex head x 30 mm	10	575	125631	BUSHING, cable, lay-in strain relief	1
559	16H904	ENCLOSURE, alternator, front	1	576	120858	BUSHING, strain relief, M40 thread	1
560	16H906	ENCLOSURE, alternator, front	1	577	125625	TIE, cable, fir tree	4
562	125371	CLAMP, hose, dia. 3/4-1-3/4 in.	1	579	120859	NUT, strain relief, M40 thread	1
* 563	125394	ISOLATOR, mount, radiator, bottom	2	580	—	See Radiator	1
564	100079	WASHER, lock, spring	8	581	120736	SCREW, hex flange hd, M6 x 1	2
565	106245	SCREW, cap, sch, 0.625 in. (16 mm) x #8-32	8	582	115942	NUT, hex, flange head	2
568	16J799	BRACKET, engine relay	1	583■	—	MUFFLER, 2 in. (50.8 mm) exhaust	1
569	24L963	KIT, relay, solenoid, 12v, intermittent	2	584■	125161	CLAMP, muffler	1
570	113161	SCREW, flanged, hex hd, 1/2 in. x 1/4-20	4	586	104572	WASHER, lock spring	2
				587	105328	SCREW, cap, hex hd, M8 x 1.25	2

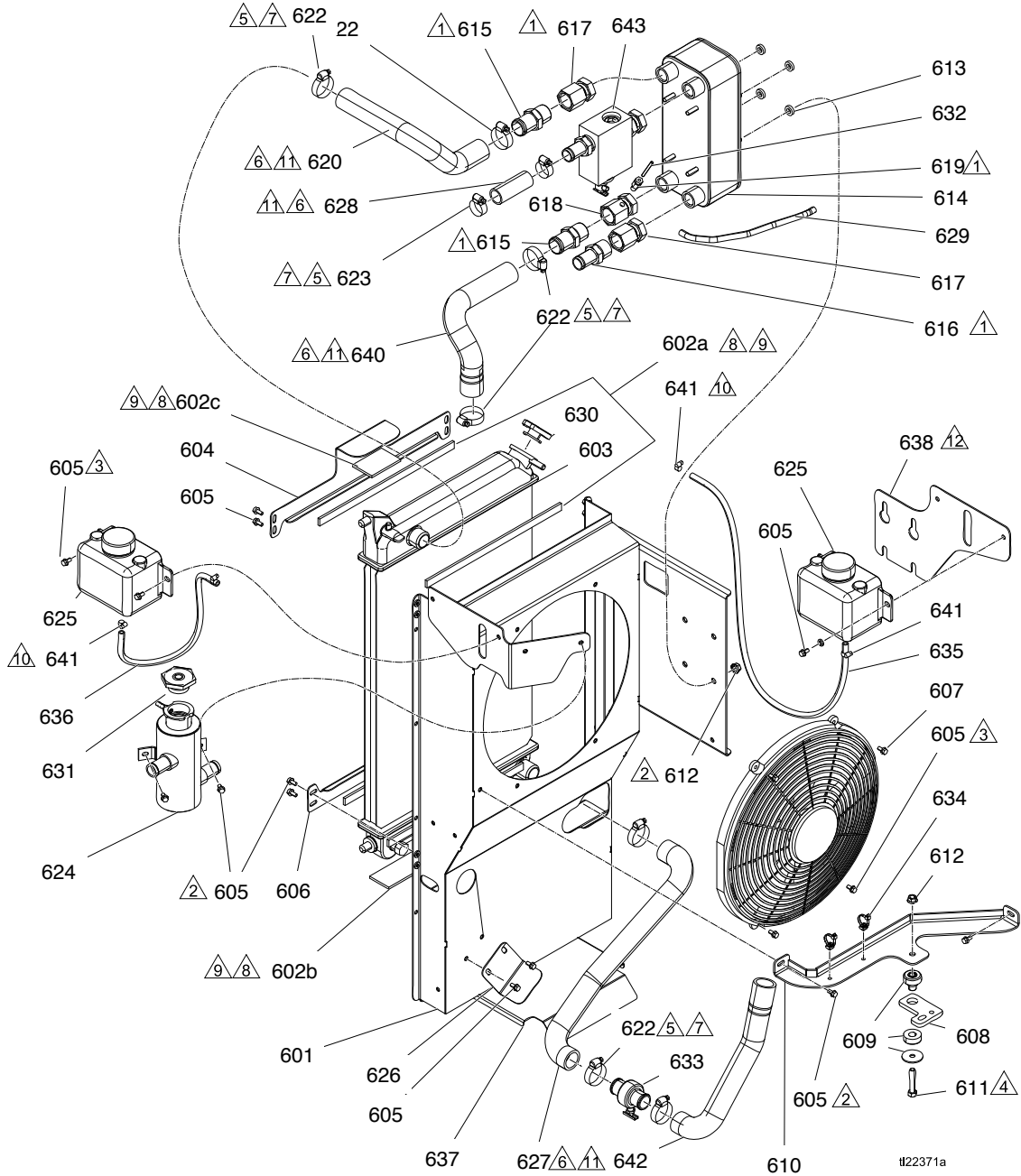
■ Included in Muffler Kit 24L943.

* Included in Complete Coolant Hose Kit 24L939.
See [Complete Coolant Hose Kit, page 132](#).
Replace fuses F6 and F7 located in the junction box above the 120/240 V alternator. Use Fuse Replacement Kit 24M723.

Parts

Radiator

See assembly notes on next page.



Parts

△₁ Apply pipe sealant to all non-swiveling pipe threads.

△₂ Torque to 25 +/- 2 ft-lbs (34 N•m).

△₃ Torque to 10 +/- 2 ft-lbs (14 N•m).

△₄ Torque to 40 +/- 2 ft-lbs (54 N•m).

△₅ Torque to 15–20 in.-lbs (1.7–2 N•m).

△₆ Install rubber hose onto bead barb fitting to 0.13 in. (3.3 mm) maximum from hex.

△₇ Locate and install edge of hose clamp 0.38 in. (9.6 mm) maximum from the end of rubber hose.

△₈ Secure adhesive side of gasket to parts opposing radiator, not radiator.

△₉ See parts list for length.

△₁₀ Torque to 25 in.-lbs (2.8 N•m).

△₁₁ Apply lubrication to all press-on hoses prior to assembly.

△₁₂ Loosen all four nuts to approximately 0.18 in. (4.5 mm) from mounting plate. Place bracket (638) over nuts and slide down under flange of nuts until it stops. Re-torque nuts to 25 ft-lbs (33.8 N•m).

Ref	Part	Description	Qty
601	16H872	COVER, radiator mount	1
602	16H910	GASKET, radiator isolation; see 602a-602c	1
602a	—	GASKET, radiator isolation; 14 in. (355.6 mm), 0.63 in. dia.	4
602b	—	GASKET, radiator isolation; 14 in. (355.6 mm), 2 in. dia.	1
602c	—	GASKET, radiator isolation; 3 in. (76.2 mm), 2 in. dia.	1
603❖	—	RADIATOR	1
604	16H868	BRACKET, top	1
605●	113161	SCREW, flanged, hex hd; 1/4–20 x 1/2 in. (13 mm)	20
606	16H870	BRACKET, bottom	1
607	16H717	FAN, 16 in., 12V	1
608	16K156	BRACKET, plate	1
609■	125579	ISOLATOR, mount, radiator, top	1
610	16H876	BRACKET, support	1
611■	111803	SCREW, cap, hex hd; 3/8–16 x 2 in. (50.8 mm)	1
612■	112958	NUT, hex, flanged	5
613	16J741	WASHER, nylon, 30% glass .750 OD	4
614◆	—	EXCHANGER, heat	1

Ref	Part	Description	Qty
615◆	125356	FITTING, 1 in. NPT X 1.25 barbed hose	2
616◆	125139	FITTING, barb, beaded hose	2
617◆	158383	FITTING, union, adapter, straight	3
618◆	125171	FITTING, modified, union	1
619*	—	FITTING, compression, 1/8 NPT, SST	1
620*	125359	HOSE, formed, 1 1/4 upper radiator	1
621*	16T800	HOSE, coolant, 1 in. ID; 6 in. (152.4 mm)	1
622◆	125371	CLAMP, hose, dia. 3/4-1-3/4 in.	4
623◆	125370	CLAMP, hose, dia. 1 1/16-1-1/2 in.	2
624●	—	TANK, aluminum, coolant	1
625	125204	BOTTLE, overflow	2
626	16H901	BRACKET, hose support	1
627	125360	HOSE, formed, 1 1/4 lower radiator	1
628	16W156	HOSE, coolant, 1 in. ID; 0.271 ft (0.08 m)	1
629	16W155	HOSE, rubber, 5/16 in. 1.5 ft (0.5 m)	1

332637G

145

Parts

Ref	Part	Description	Qty	Ref	Part	Description	Qty
630❖	—	CAP, radiator; 16 psi (110 kPa, 1.1 bar)	1	637	16M323	GUARD, engine bottom	1
631●	24L967	CAP, pressure, coolant, 8-10 psi (55-70 kPa, 0.5-0.7 bar)	1	638	16M141	BRACKET, overflow bottle	1
632*	—	SENSOR, RTD 1 K OHM	1	640*	125361	HOSE, formed, 1-1/4 upper engine	1
633	125175	COUPLING, hose, drain	1	641*	125163	CLAMP, hose 7/32 in. - 5/8in.	4
634	125625	TIE, cable, fir tree	2	642*	125382	HOSE, formed, 1-1/4 lower engine	1
635	16N580	HOSE, rubber, 5/16 in., 3.33 ft (1 m)	1	643	—	HOUSING, filter	1
636	16N581	HOSE, rubber, 5/16 in., 1.25 ft (0.4 m)	1				

◆ *included in Heat Exchanger Kit 24L946.*

❖ *Included in Radiator Repair Kit 24L937.*

● *Included in Coolant Bottle Repair Kit 24L942.*

■ *Included in Radiator Isolator Kit 24L945.*

Included in Filter Housing Kit 24T027. Order 24T028 for replacement filter screen (40 mesh).

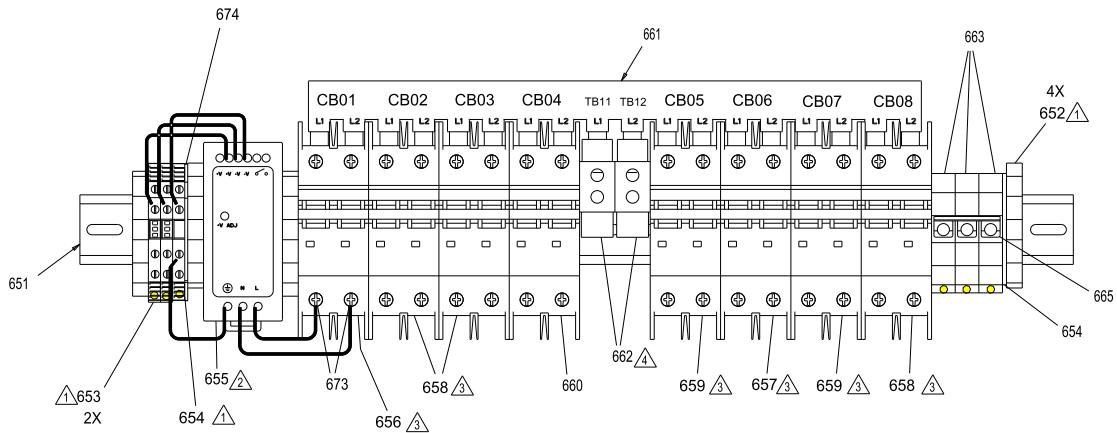
* *Included in RTD Sensor Kit 24L974.*

* *Included in Complete Coolant Hose Kit 24L939. See [Complete Coolant Hose Kit, page 132.](#)*

Parts

Circuit Breaker Modules 24T061, Din Rail Circuit Breaker Assembly

See [Electrical Schematics](#), page 156.



- 1 Torque to 5-8 in.-lbs (0.6-1 N•m)
- 2 Torque to 4-5 in.-lbs (0.5-0.6 N•m)
- 3 Torque to 23-26 in.-lbs (2.6-3 N•m)

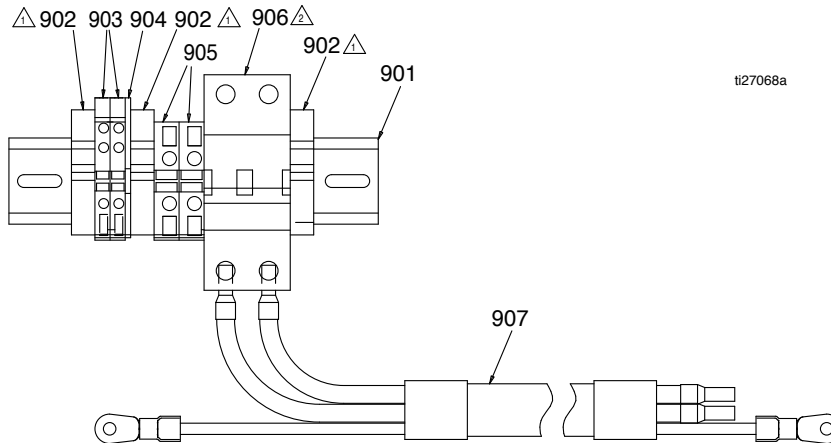
Ref	Part	Description	Qty	Ref	Part	Description	Qty
652	120838	BLOCK, clamp end	4	660	17A316	CIRCUIT, breaker, 2P, 30A, UL489	1
653	24R723	BLOCK, terminal, quad M4, ABB	2	661	24V851	BAR, 18 pos, power buss	1
654	24R722	BLOCK, terminal pe, quad, ABB	1	662	24V852	BAR, bus, connector	2
655	126453	POWER supply, 24V	1	663	127302	BLOCK, terminal, 12.2 mm, 2 wire	3
656	17A310	CIRCUIT, breaker, 2P, 5A, UL489	1	664	127303	BLOCK, terminal, cover	1
657	17A317	CIRCUIT, breaker, 2P, 40A, UL489	1	665	127304	BLOCK, terminal, jumper, 3 position	1
658	17A313	CIRCUIT, breaker, 2P, 15A, UL489	3	674	127308	BLOCK, terminal	1
659	17A314	CIRCUIT, breaker, 2P, 20A, UL489	2				

332637G

147

Parts

17H073, Transformer and Fan Circuit Breaker Module



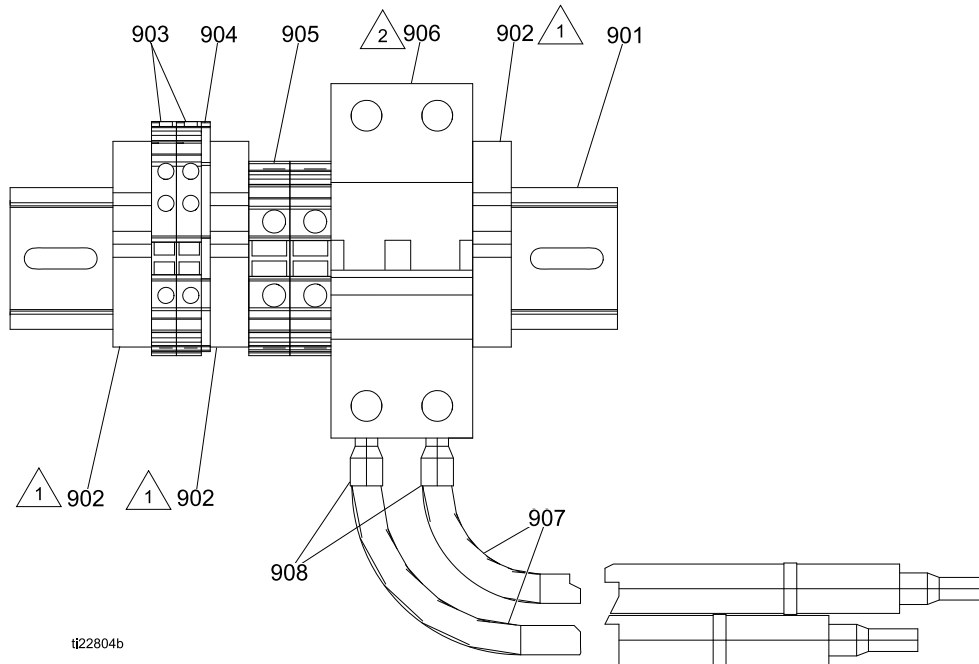
- △1 Torque to 5-8 in.-lbs (0.6-1 N•m)
- △2 Torque to 23-26 in.-lbs (2.6-3 N•m)

See [Electrical Schematics, page 156](#).



Ref	Part	Description	Qty	Ref	Part	Description	Qty
901	- - -	DIN RAIL	1	906	24L960	CIRCUIT, breaker, 50 AMP, 2 pole	1
902	125667	TERMINAL, stop, end	3	907	- - -	HARNESS, electric	1
903	126818	BLOCK, terminal 3-wire	2				
904	126817	COVER, end	1				
905	125815	TERMINAL, block, feed thru	2				

Parts

24T059, Transformer and Fan Circuit Breaker Module (Series A only)



ti22804b

-  Torque to 5-8 in.-lbs (0.6-1 N•m)
-  Torque to 23-26 in.-lbs (2.6-3 N•m)

See [Electrical Schematics, page 156](#).

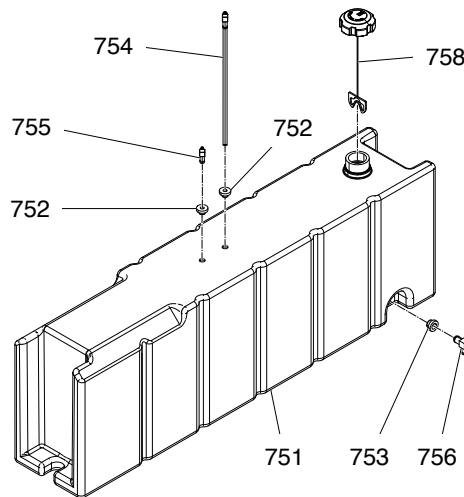
Ref	Part	Description	Qty	Ref	Part	Description	Qty
901	- - -	DIN RAIL	1	906	24L960	CIRCUIT, breaker, 50 AMP, 2 pole	1
902	125667	TERMINAL, stop, end	3	907	- - -	WIRE, cu, electrical, 8 AWG, black	8
903	126818	BLOCK, terminal 3-wire	2	908	- - -	FERRULE, wire, 8 AWG	4
904	126817	COVER, end	1				
905	125815	TERMINAL, block, feed thru	2				

332637G

149

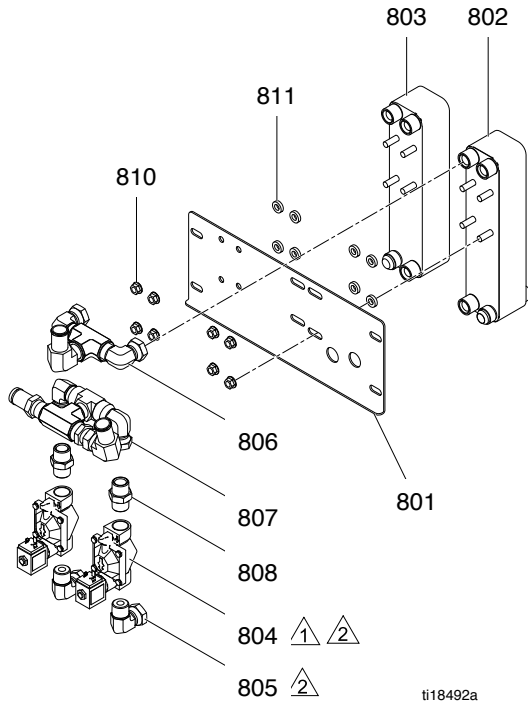
Parts

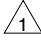

**Fuel Tank
24K390**



Ref	Part	Description	Qty	Ref	Part	Description	Qty
751	-	TANK, fuel	1	755	125648	FITTING, 3/16 barbed	1
752	125645	GROMMET, tank	2	756	125649	VALVE, drain	1
753	125646	GROMMET, tank	1	758	24L955	CAP, fuel	1
754	125647	FITTING, suction, assy	1				

Heat Exchanger Assembly



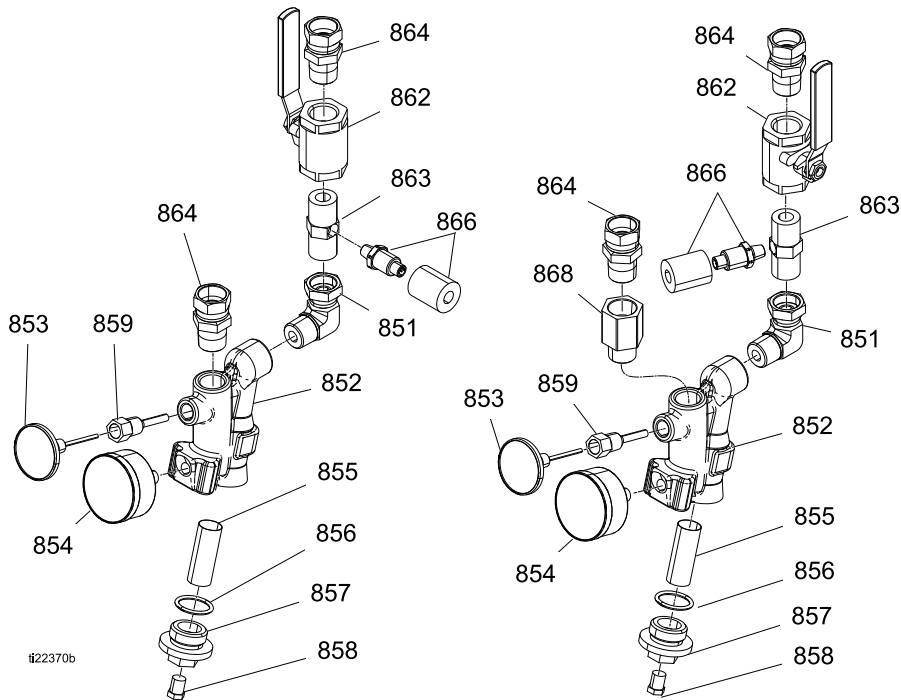
-  Ensure flow direction arrows on solenoid valves (804) are pointing down.
-  Apply anaerobic pipe sealant to all non-swiveling fittings before assembling.

Ref	Part	Description	Qty	Ref	Part	Description	Qty
801	16H759	BRACKET, heat exchanger	1	806	24J702	KIT, FITTING, outlet, heat exchanger	1
802	24L917	EXCHANGER, heat, side A	1	807	24J703	KIT, fitting, inlet, heat exchanger	1
803	24L918	EXCHANGER, heat, side B	1	808	C20487	NIPPLE, hex	2
804*	24L916	VALVE, solenoid, 3/4 NPT, 12 VDC	2	810	112958	NUT, hex, flanged	8
805	160327	UNION ADAPTER, 90°	2	811	16J741	WASHER, nylon, 30% glass, 3/4 OD	8

* Order 125774 Valve Repair Kit to replace all internal valve parts.
Order 125787 Coil Repair Kit to replace coil.

Parts

**Fluid Inlet Kit
24V143**



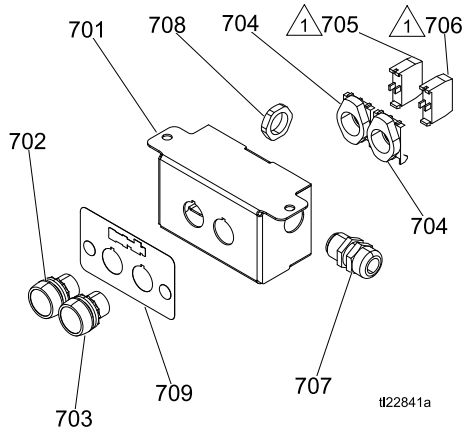
- 1 Apply sealant to all tapered pipe threads. Apply sealant to female threads. Apply to at least the first four threads and approximately 1/4 turn wide.
- 2 Apply thermal paste to the stem of dial before assembling into housing.


Ref	Part	Description	Qty	Ref	Part	Description	Qty
851	160327	UNION ADAPTER, 90°	2	859	15D757	HOUSING, thermometer, VISCON HP	2
852◆	247503	KIT, manifold, strainer, inlet	2	862	624545	VALVE, BALL 3/4 NPT	2
853	24U852	THERMOMETER, dial	2	863	624545	FITTING, tee, 3/4 run x 1/4(f)	2
854	24U853	GAUGE, pressure, fluid	2	864	118459	FITTING, union, swivel	4
855*	—	FILTER, replacement, 20 mesh	2	866	24U851	TRANSDUCER, pressure, temperature	1
856	C20203	GASKET, Y-strainer, inlet	2	868	16W954	FITTING, adapter, 3/4 NPT(m) x 3/4 NPT(f)	1
857◆	16V879	PLUG, Y-strainer, , inlet	2				
858◆	555808	PLUG, pipe	2				

- * Optional 80 mesh filter 255082 (2 pack)
Included in Inlet Filter and Seal Kit 24V020 (20 mesh, 2 pack).
- ◆ Included in Manifold Repair Kit 247503.

Parts

Switch Box Enclosure



 Assemble switch blocks as shown.

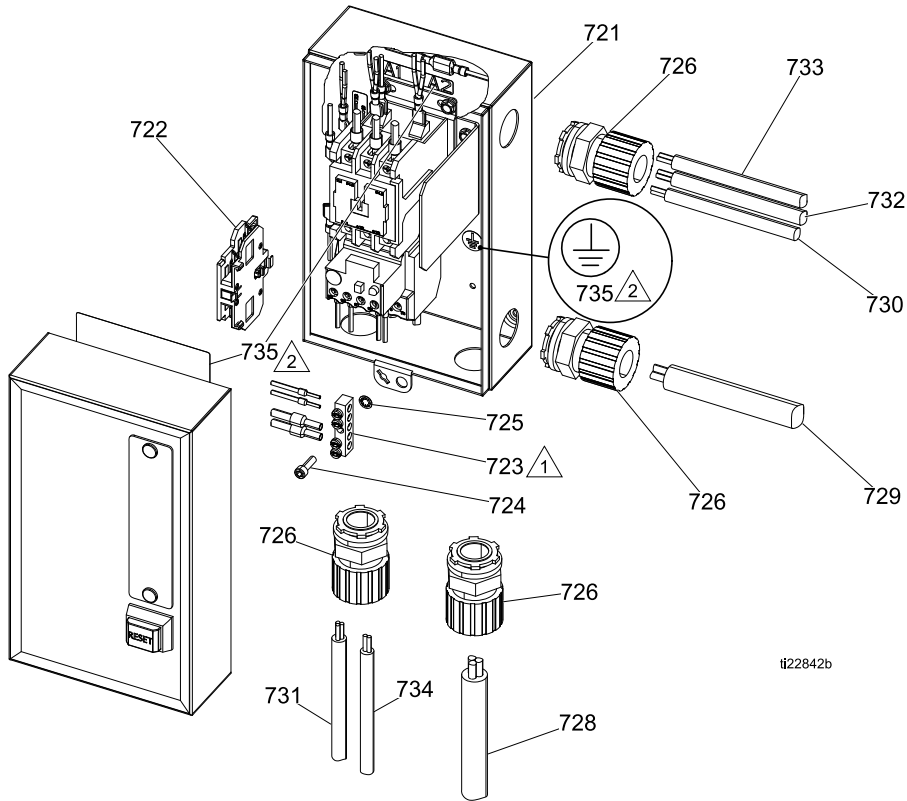
Ref	Part	Description	Qty	Ref	Part	Description	Qty
701	16W575	ENCLOSURE, front	1	706	120495	BLOCK, switch, N.C.	1
702	121618	SWITCH, start, push button, green	1	707	260067	FITTING, strain relief, 1/2 npt	1
703	121619	SWITCH, stop, push button, red	1	708	117625	NUT, locking	1
704	120493	LATCH, mounting	2	709	16W614	LABEL	1
705	120494	BLOCK, switch, N.O.	1				

332637G

153

Parts

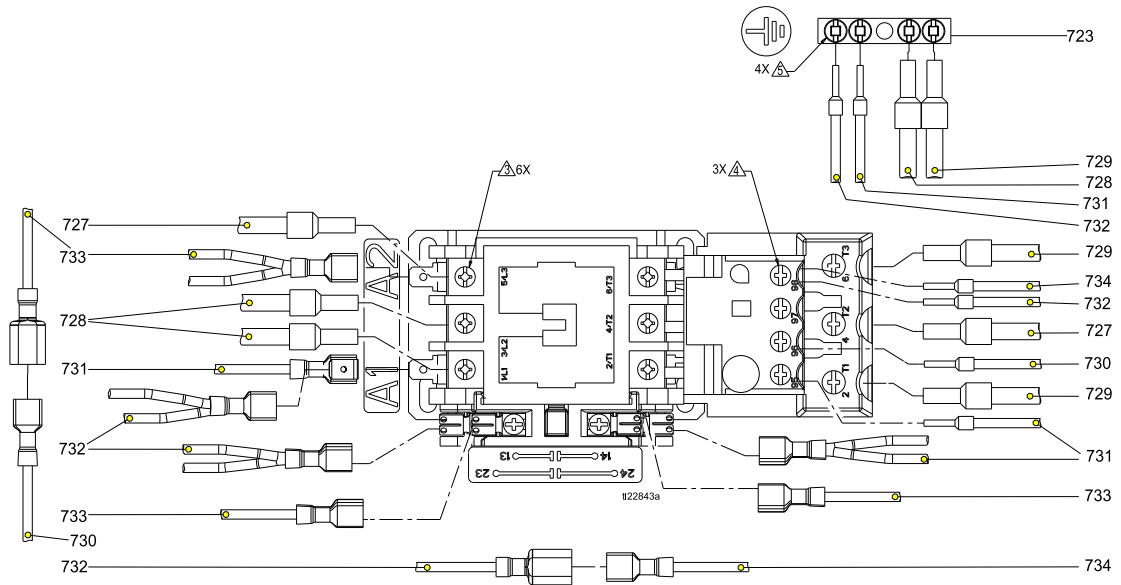
Motor Starter

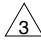
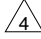
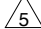


ti22842b

- △ 1 Attach ground connector bar aligned vertically to electrical box with screw and washer.
- △ 2 Labels from sheet (735).

Parts



-  Torque to 38–42 in.-lbs (4.3–4.7 N•m).
-  Torque to 18–22 in.-lbs (2–2.5 N•m).
-  Torque to 28–32 in.-lbs (3.1–3.6 N•m).

Ref	Part	Description	Qty	Ref	Part	Description	Qty
721	24U081	STARTER, int. reactor, 3 phase	1	728	24U080	CABLE, air compressor breaker	1
722	24U082	CONTACT, aux, two no switches	1	729	24U079	CABLE, air compressor	1
723	119257	CONNECTOR, bar, ground	1	730	16X011	CABLE, over temperature, compressor	1
724	555582	SCREW, soc hd cap, #10	1	731	24U078	CABLE, dryer, breaker	1
725	555629	WASHER, #10, external tooth lock	1	732	16X012	CABLE, power, dryer	1
726	16M826	CORD, grip, 3/4 in.	4	733	24U076	CABLE, start-stop	1
727	16X009	CABLE, shunt	1	734	16X010	CABLE, pressure vent	1
				735	16X422	LABEL	1

Replacement Warning labels, signs, tags, and cards are available at no cost.