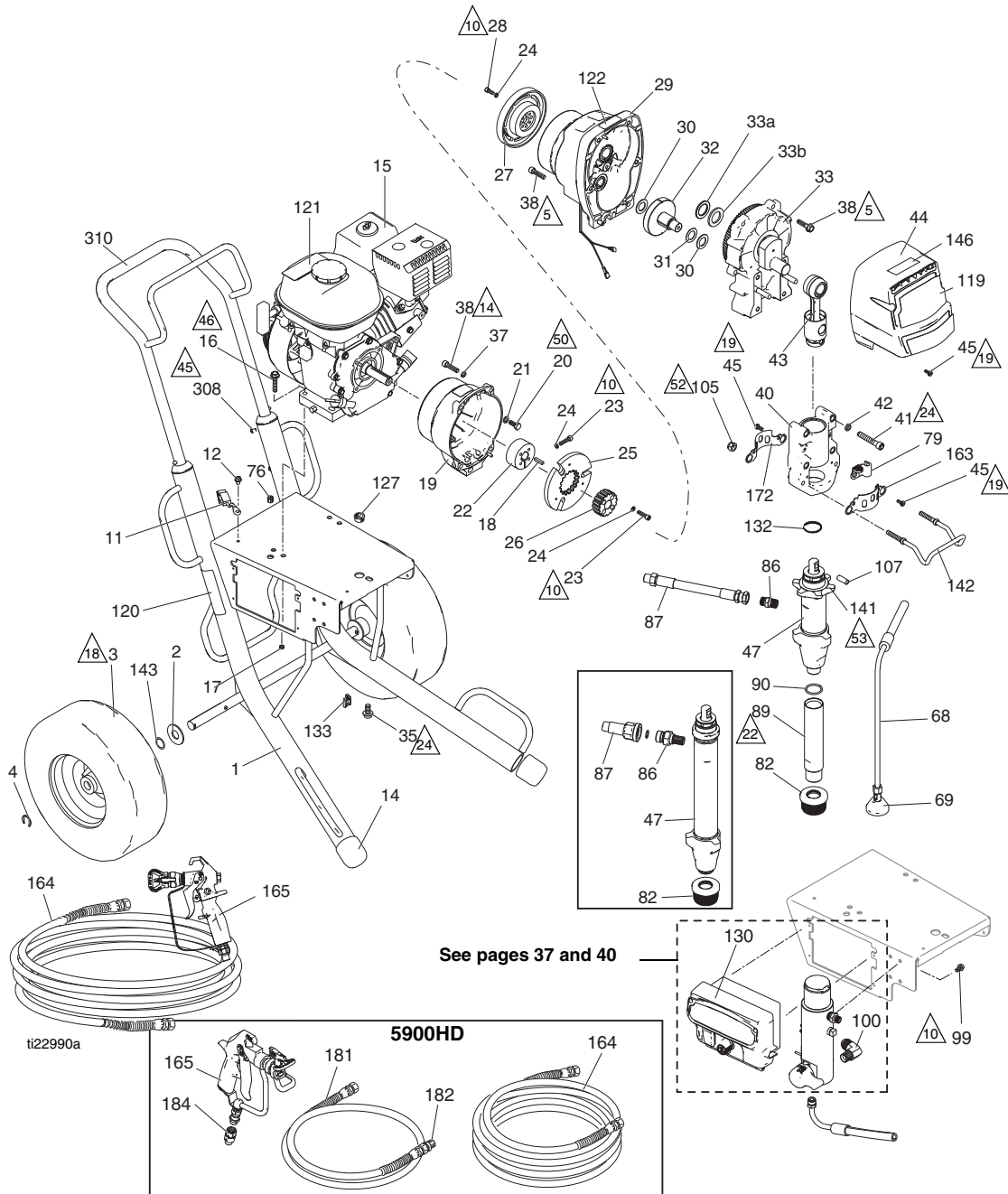


Graco GMAX 5900

GMAX II 5900/5900HD Standard Series

GMAX II 5900/5900HD Standard Series



GMAX II 5900/5900HD Standard Series

Parts List - GMAX II 5900/5900HD Standard Series

Ref.	Part	Description	Qty.	Ref.	Part	Description	Qty.
1	287370	FRAME, standard, cart	1		16X349	5900	1
2	156306	WASHER, flat	2		16X352	5900HD	1
3	119509	WHEEL, pneumatic	2	120▲	15F638	LABEL, GMAX warning fire & skin	1
4	15E891	CLIP, retaining	2	121▲	194126	LABEL, warning	1
11	237686	WIRE, ground assembly w/ clamp	1	122▲	290228	LABEL, caution	1
12	112798	SCREW, thread forming, hex hd	1	127	119569	BUSHING, strain relief	1
14	276974	CAP, leg	2	130	16X822	BOX, control	1
15	114530	ENGINE, gas, 5.5 HP, Honda	1	132	119778	SPRING, retaining	1
16	110837	SCREW, flange, hex	2	133	114687	CLIP, retainer	1
17	110838	NUT, lock	2	141	193031	NUT, retaining	1
18	183401	KEY, parallel	1	142	16C457	HANGER, pail	1
19	15E277	HOUSING, clutch, mach 5900/7900	1	143	116038	WASHER, wave spring	2
20	108842	SCREW, cap, hex hd	4	146	16X983	LABEL, standard series	1
21	100214	WASHER, lock	4	155	15F354	FUNNEL, oil (not shown)	1
22	193680	COLLAR, shaft	1	160	102982	PACKING, o-ring, 5900HD	1
23†	108803	SCREW, hex, socket head	6	163	16X770	SHIELD, pump rod	1
24†	105510	WASHER, lock, spring (hi-collar)	10	164	240794	HOSE, coupled, 1/4 in. x 50 ft, 5900	1
25†		ARMATURE, clutch, 5 in.	1		240797	HOSE, coupled, 3/8 in. x 50ft, 5900HD	1
26†		HUB, armature	1	165	288420	GUN, contractor, RAC X, packaged, 5900	1
27†		ROTOR, clutch, 5 in.	1		241705	GUN, spray, texture, 5900HD	1
28†	101682	SCREW, cap, sch	4	172	15C762	SHIELD, pump rod	1
29	287465	HOUSING, pinion, 5900	1	181	241735	HOSE, cp/d, 1/4 in. x 3 ft, 5900HD	1
30	114672	WASHER, thrust	2	182	159841	BUSHING, 7250 psi, 3/8 in. x 1/4 in., 5900HD	1
31	114699	WASHER, thrust	1	184	189018	SWIVEL, assembly, 5900HD	1
32	287460	GEAR, combination, 5900	1	308	108795	SCREW, mach, pnh	4
33	287469	HOUSING, drive, 5900, <i>includes 33a, 33b</i>	1	310	24A250	HANDLE, cart (standard only)	1
33a	116192	WASHER, thrust	1	▲	16Y631	LABEL, warning	1
33b	194173	WASHER	1	▲	16Y632	LABEL, warning	1
35	112395	SCREW, cap, flng hd	1	▲	16Y633	LABEL, warning	1
37	104008	WASHER, lock, spring	4				
38	15C753	SCREW, mach, hex wash hd	6				
40	24V027	HOUSING, bearing, 5900	1				
41	114666	SCREW, cap, socket head	4				
42	106115	WASHER, lock (hi-collar)	4				
43	24V021	ROD, connecting, 5900	1				
44	16Y748	COVER, front, 5900, <i>includes 45</i>	1				
45	118444	SCREW, mach, slot hex wash hd	8				
47		PUMP, displacement	1				
	16Y706	5900, <i>includes 86, 89, 90</i>	1				
	16X429	5900HD, <i>includes 86</i>	1				
68	244240	HOSE, coupled, <i>includes 69</i>	1				
69	241920	DEFLECTOR, threaded	1				
76	114678	BUSHING, strain relief	1				
79	278204	CLIP, drain line	1				
82	189920	STRAINER, (1-11 1/2 NPSM)	1				
86		FITTING	1				
	196178	5900	1				
	16X834	5900HD	1				
87		HOSE, coupled	1				
	16X909	5900	1				
	16X905	5900HD	1				
89	248215	TUBE, intake	1				
90	118494	PACKING, o-ring	1				
99	113161	SCREW, flange, hex hd	3				
100	125926	FITTING, 90 deg (5900HD)	1				
105	111040	NUT, lock, insert, nylock, 5/16	2				
107	15F856	PIN, pump, 5900	1				
119		LABEL, front, GMAX II 5900	1				

▲ Replacement Danger and Warning Labels, Tags and Cards are available at no cost.

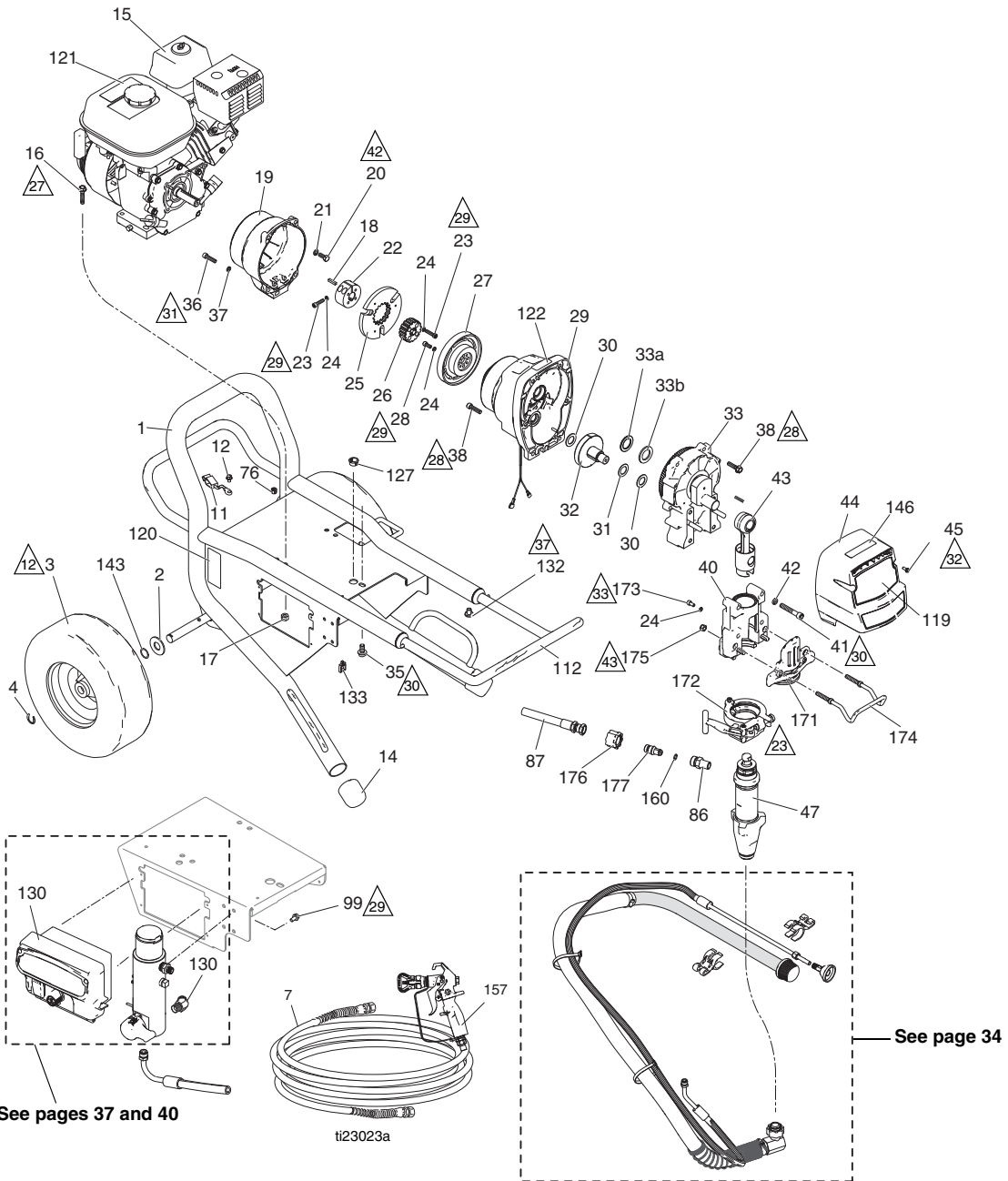
† Included in Clutch Replacement Kit 241113.

Part Specifications:

Ref.	Instruction
▲5	Torque to 190-210 in-lb (21.5-23.7 N•m)
▲10	Torque to 115-135 in-lb (12.9-15.3 N•m)
▲14	Torque to 130-150 in-lb (14.7-16.9 N•m)
▲18	Inflate tires to 28-32 psi (1.93-2.21 bar/0.193-0.221 MPa)
▲19	Torque to 30-35 in-lb (3.4-3.9 N•m)
▲22	Torque to 70-90 in-lb (7.9-10.2 N•m)
▲24	Torque to 23-29 ft-lb (31.2-39.3 N•m)
▲35	Torque to 25-35 in-lb (2.8-3.9 N•m)
▲46	Torque to 17-23 ft-lb (23.1-31.2 N•m)
▲50	Torque to 170-190 in-lb (19.2-21.5 N•m)
▲62	Torque to 200-230 in-lb (22.6-25.9 N•m)
▲63	Torque to 75 +/- 5 ft-lb (101.7 +/- 6.8 N•m)

GMAX II 5900 Lo-Boy Series

GMAX II 5900 Lo-Boy Series



GMAX II 5900 Lo-Boy Series

Parts List - GMAX II 5900 Lo-Boy Series

Ref.	Part	Description	Qty.	Ref.	Part	Description	Qty.
1	16Y519	FRAME, cart	1	120▲	15F638	LABEL, GMAX warning fire & skin	1
2	156306	WASHER, flat	2	121▲	194126	LABEL, warning	1
3	119509	WHEEL, pneumatic	2	122▲	290228	LABEL, caution	1
4	15E891	CLIP, retaining	2	127	119569	BUSHING, strain relief	1
7	240794	HOSE, coupled, 1/4 in. x 50 ft	1	130	16X822	BOX, control	1
11	237686	WIRE, ground assembly w/ clamp	1	132	109032	SCREW, mach, pnh	4
12	112798	SCREW, thread forming, hex hd	1	133	114687	CLIP, retainer	1
14	276974	CAP, leg	2	143	116038	WASHER, wave spring	2
15	114530	ENGINE, gas, 5.5 HP, Honda	1	146	16X979	LABEL, Proconnect	1
16	110837	SCREW, flange, hex	2	157	288420	GUN, contractor, RAC X, packaged	1
17	110838	NUT, lock	2				
18	183401	KEY, parallel	1	160	107505	PACKING, o-ring	1
19	15E277	HOUSING, clutch, mach 5900/7900	1	171	16X385	PLATE, front, ProConnect II, 5900 Lo-Boy	1
20	108842	SCREW, cap, hex hd	4	172	16X324	CLAMP, pump, large, 5900 Lo-Boy	1
21	100214	WASHER, lock	4				
22	193680	COLLAR, shaft	1	173	101550	SCREW, cap, sch, 5900 Lo-Boy	2
23†	108803	SCREW, hex, socket head	6	174	16C457	HANGER, pail, 5900 Lo-Boy	1
24†	105510	WASHER, lock, spring (hi-collar)	12	175	111040	NUT, lock, insert, nylock, 5/16 5900 Lo-Boy	2
25†		ARMATURE, clutch, 5 in.	1				
26†		HUB, armature	1	176	120583	NUT, hand, 5900 Lo-Boy	1
27†		ROTOR, clutch, 5 in.	1	177	16X833	FITTING, quick disconnect, 3/8 npsm, 5900 Lo-Boy	1
28†	101682	SCREW, cap, sch	4	▲	16Y631	LABEL, warning	1
29	287465	HOUSING, pinion, 5900	1	▲	16Y632	LABEL, warning	1
30	114672	WASHER, thrust	2	▲	16Y633	LABEL, warning	1
31	114699	WASHER, thrust	1				
32	287460	GEAR, combination, 5900	1				
33	287469	HOUSING, drive, 5900, includes 33a, 33b	1				
33a	116192	WASHER, thrust	1				
33b	194173	WASHER	1				
35	112395	SCREW, cap, flng hd	1				
36	102962	SCREW, cap sch	4				
37	104008	WASHER, lock, spring	4				
38	15C753	SCREW, mach, hex wash hd	6				
40	24V088	HOUSING, bearing, 5900	1				
41	114666	SCREW, cap, socket head	4				
42	106115	WASHER, lock (hi-collar)	4				
43	24V085	ROD, connecting, 5900	1				
44	16Y748	COVER, front, 5900, includes 45	1				
45	118444	SCREW, mach, slot hex wash hd	4				
47	16X419	PUMP, displacement, 5900, includes 86	1				
76	114678	BUSHING, strain relief	1				
86	15J413	FITTING	1				
87	16X950	HOSE, coupled	1				
88	122533	FITTING, 45 deg	1				
99	113161	SCREW, flange, hex hd	3				
112	16Y780	HANDLE, cart	1				
119	16X349	LABEL, front, GMAX II 5900	1				

▲ Replacement Danger and Warning Labels, Tags and Cards are available at no cost.

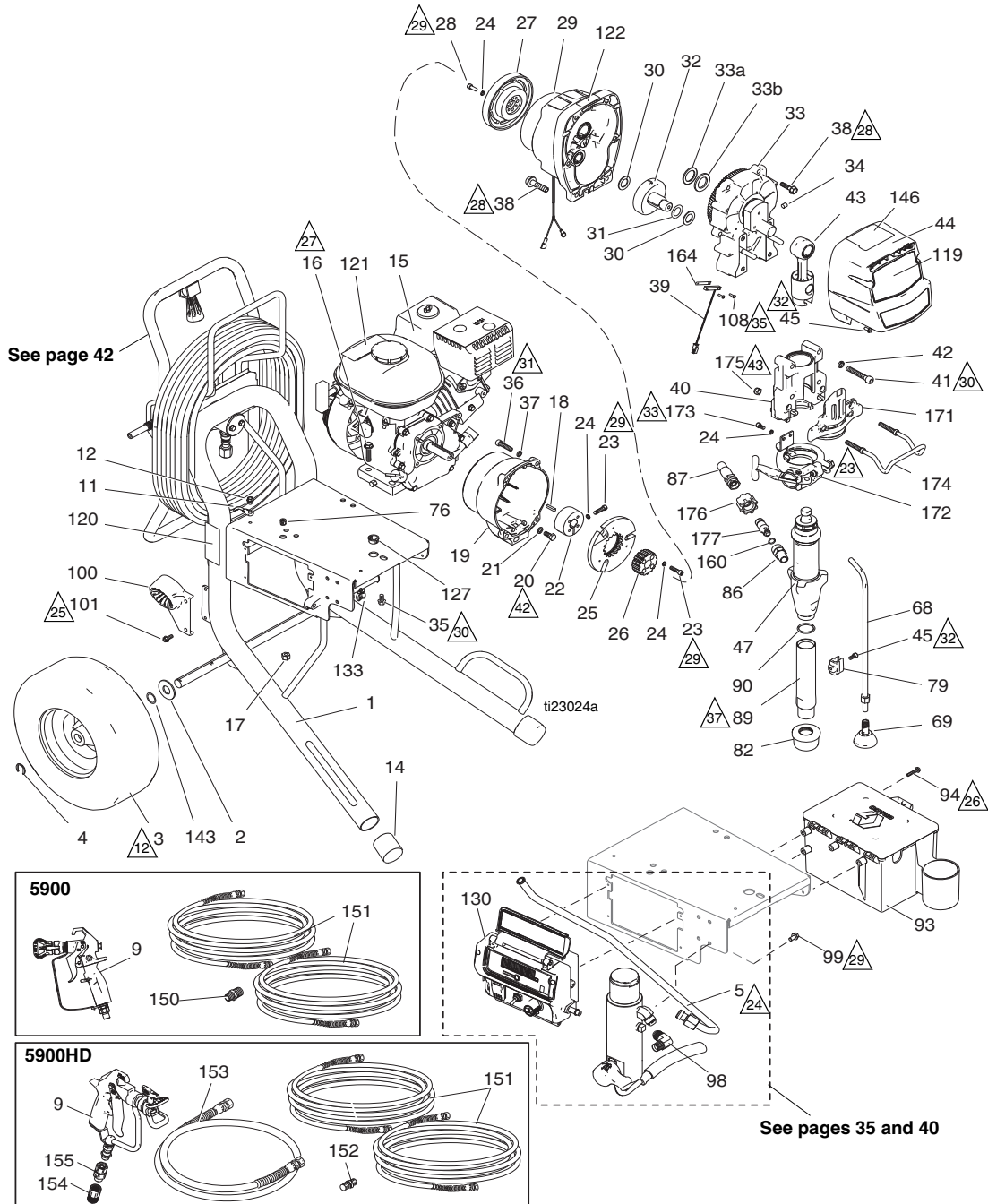
† Included in Clutch Replacement Kit 241113.

Part Specifications:

Ref.	Instruction
▲12	Inflate tires to 28-32 psi (1.93-2.21 bar/0.193-0.221 MPa)
▲23	Torque clamp adjustment bolt to 140-160 in-lb (15.8-18.1 N•m) with reference 47 installed and ProConnect in locked position.
▲27	Torque to 17-23 ft-lb (23.1-31.2 N•m)
▲28	Torque to 190-210 in-lb (21.5-23.7 N•m)
▲29	Torque to 115-135 in-lb (12.9-15.3 N•m)
▲30	Torque to 23-29 ft-lb (31.2-39.3 N•m)
▲31	Torque to 130-150 in-lb (14.7-16.9 N•m)
▲32	Torque to 30-45 in-lb (3.9-5.1 N•m)
▲33	Torque to 90-110 in-lb (10.2-12.4 N•m)
▲37	Torque to 25-35 in-lb (2.8-3.9 N•m)
▲42	Torque to 170-190 in-lb (19.2-21.5 N•m)
▲43	Torque to 200-230 in-lb (22.6-25.9 N•m)

GMAX II 5900/5900HD ProContractor Series

GMAX II 5900/5900HD ProContractor Series



GMAX II 5900/5900HD ProContractor Series

Parts List - GMAX II 5900/5900HD ProContractor Series

Ref.	Part	Description	Qty.	Ref.	Part	Description	Qty.
1	24D047	FRAME, hose reel, cart	1	119		LABEL, front, GMAX II, 5900	1
2	156306	WASHER, flat	2		16X349	5900	1
3	119509	WHEEL, pneumatic	2		16X352	5900HD	1
4	15E891	CLIP, retaining	2	120▲	15F638	LABEL, GMAX warning fire & skin	1
5	16C381	TUBE, hydraulic, GMAX 5900/7900	1	121▲	194126	LABEL, warning	1
9	288420	GUN, contractor, RAC X, packaged, 5900	1	122▲	290228	LABEL, caution	1
	241705	GUN, spray, texture, 5900HD	1	127	119569	BUSHING, strain relief	1
11	237686	WIRE, ground assembly w/ clamp	1	130	16X821	BOX, control	1
12	112798	SCREW, thread forming, hex hd	1	133	114687	CLIP, retainer	1
14	276974	CAP, leg	2	134	15F354	FUNNEL, oil (not shown)	1
15	114530	ENGINE, gas, 5.5 HP, Honda	1	143	116038	WASHER, wave spring	2
16	110837	SCREW, flange, hex	2	146	16X981	LABEL, Proconnect	1
17	110838	NUT, lock	2	150	162453	NIPPLE, 1/4 npsm x 1/4 npt, 5900	1
18	183401	KEY, parallel	1	151	240794	HOSE, coupled, 1/4 in. x 50 ft	2
19	15E277	HOUSING, clutch, mach, 5900/7900	1		240797	HOSE, coupled, 3/8 in. x 50 ft, 5900HD	2
20	108842	SCREW, cap, hex hd	4	152	162485	ADAPTER, nipple, 5900HD	1
21	100214	WASHER, lock	4	153	241735	HOSE, cpd, 1/4 in. x 3 ft, 5900HD	1
22	193680	COLLAR, shaft	1	154	159841	BUSHING, 7250 psi, 3/8 x 1/4 in. 5900HD	1
23†	108803	SCREW, hex, socket head	6	155	189018	SWIVEL, assembly, 5900HD	1
24†	105510	WASHER, lock, spring (hi-collar)	12	160		PACKING, o-ring	1
25†		ARMATURE, clutch, 5 in.	1		107505	5900	
26†		HUB, armature	1		102982	5900HD	
27†		ROTOR, clutch, 5 in.	1	164	15F947	SHIELD, magnetic	1
28†	101682	SCREW, cap, sch	4	171	16X385	PLATE, front, 5900, PC II	1
29	287465	HOUSING, pinion, 5900	1	172	16X324	CLAMP, pump, large	1
30	114672	WASHER, thrust	2	173	101550	SCREW, cap, sch	2
31	114699	WASHER, thrust	1	174	16C457	HANGER, pail	1
32	287460	GEAR, combination, 5900	1	175	111040	NUT, lock, insert, nylock, 5/16	2
33	287469	HOUSING, drive, 5900, <i>includes 33a, 33b</i>	1	176	120583	NUT, hand	1
33a	116192	WASHER, thrust	1	177	16X833	FITTING, quick disconnect, 3/8 npsm	1
33b	194173	WASHER	1	▲	16Y631	LABEL, warning	1
34	116618	MAGNET	1	▲	16Y632	LABEL, warning	1
35	112395	SCREW, cap, flng hd	1	▲	16Y633	LABEL, warning	1
36	102962	SCREW, cap sch	4				
37	104008	WASHER, lock, spring	4				
38	15C753	SCREW, mach, hex wash hd	6				
39	119562	SWITCH, reed w/connector	1				
40	24V088	HOUSING, bearing, 5900	1				
41	114666	SCREW, cap, socket head	4				
42	106115	WASHER, lock (hi-collar)	4				
43	24V085	ROD, connecting, 5900	1				
44	16Y748	COVER, front, 5900, <i>includes 45</i>	1				
45	118444	SCREW, mach, slot hex wash hd	5				
47		PUMP, displacement	1				
	16X419	5900 (<i>includes 86, 89, 90</i>)	1				
	16X421	5900HD, <i>includes 86</i>	1				
68	244240	HOSE, coupled, <i>includes 69</i>	1				
69	241920	DEFLECTOR, threaded	1				
76	114678	BUSHING, strain relief	1				
79	16X203	CLIP, drain line	1				
82	189920	STRAINER, (1-11 1/2 NPSM)	1				
86		FITTING, pump, QD	1				
	16Y579	5900					
	16X834	5900HD					
87		HOSE, coupled	1				
	16X904	3/8 in., 5900					
	16X905	1/2 in., 5900HD					
89	248215	TUBE, intake	1				
90	118494	PACKING, o-ring	1				
93	287253	TOOL BOX, <i>includes 94</i>	1				
94	118852	SCREW, thd forming, hex washer hd	3				
98	125926	FITTING, 90 deg	1				
99	113161	SCREW, flange, hex hd	3				
100	278083	GUIDE, hose	1				
101	117633	SCREW, slot hex wash hd	2				
108	114528	SCREW, mach, phillips, pnhd	2				

▲ Replacement Danger and Warning Labels, Tags and Cards are available at no cost.

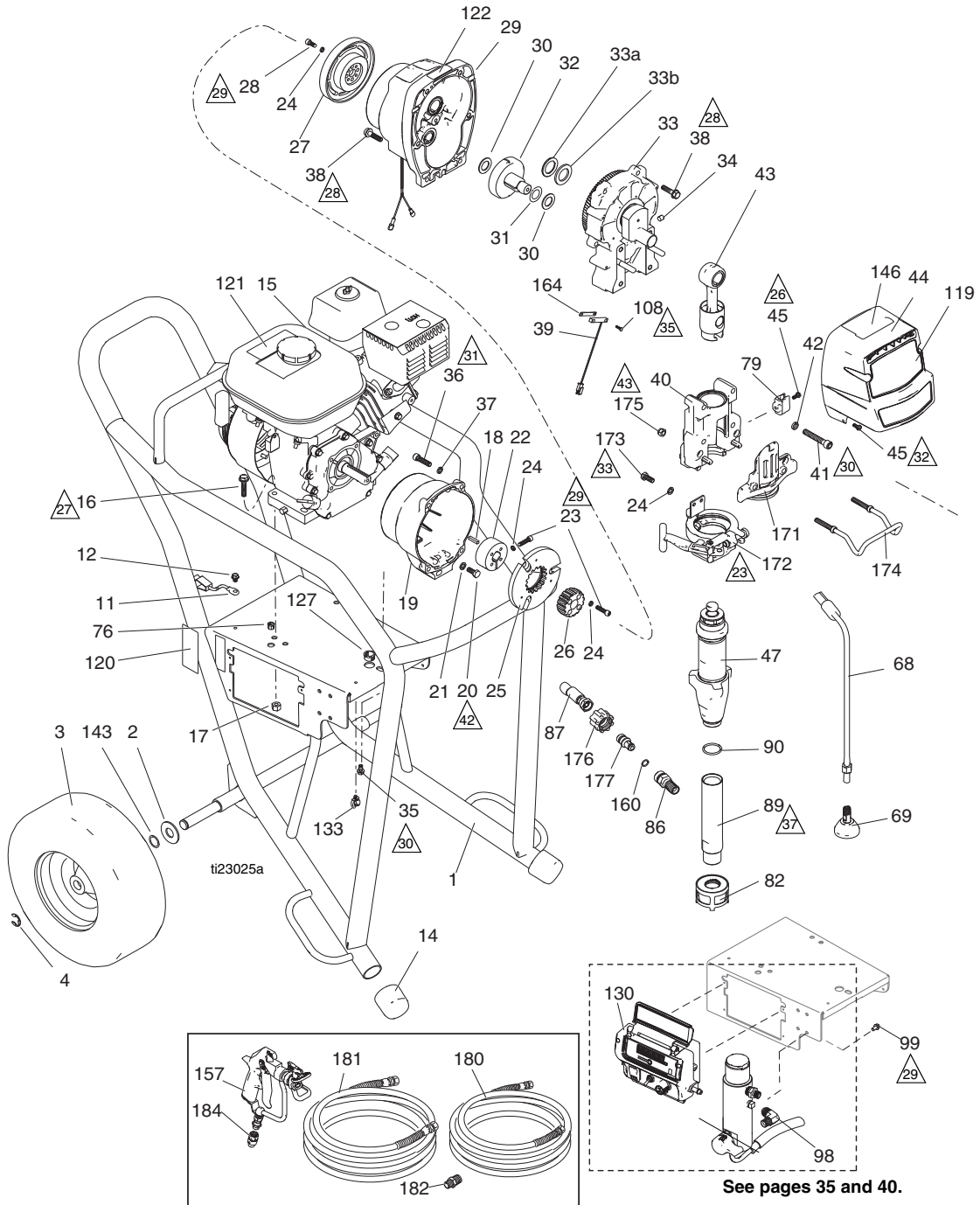
† Included in Clutch Replacement Kit 241113.

Part Specifications:

Ref.	Instruction
▲2	Inflate tires to 28-32 psi (1.93-2.21 bar/0.193-0.221 MPa)
▲3	Torque clamp adjustment bolt to 140-160 in-lb (15.8-18.1 N•m) with reference 47 installed and ProConnect in locked position.
▲4	Torque to 38-42 ft-lb (51.5-56.9 N•m)
▲5	Torque to 120-130 in-lb (13.6-14.7 N•m)
▲6	Torque to 40-45 in-lb (4.5-5.1 N•m)
▲7	Torque to 17-23 ft-lb (23.1-31.2 N•m)
▲8	Torque to 190-210 in-lb (21.5-23.7 N•m)
▲9	Torque to 115-135 in-lb (12.9-15.3 N•m)
▲0	Torque to 23-29 ft-lb (31.2-39.3 N•m)
▲1	Torque to 130-150 in-lb (14.7-15.9 N•m)
▲2	Torque to 30-45 in-lb (3.4-5.1 N•m)
▲3	Torque to 90-110 in-lb (10.2-12.4 N•m)
▲4	Torque to 8-12 in-lb (0.9-1.4 N•m)
▲5	Torque to 70-90 in-lb (7.9-10.2 N•m)
▲6	Torque to 170-190 in-lb (19.2-21.2 N•m)
▲7	Torque to 200-230 in-lb (22.6-25.9 N•m)

GMAX II 5900 IronMan Series

GMAX II 5900 IronMan Series



See pages 35 and 40.

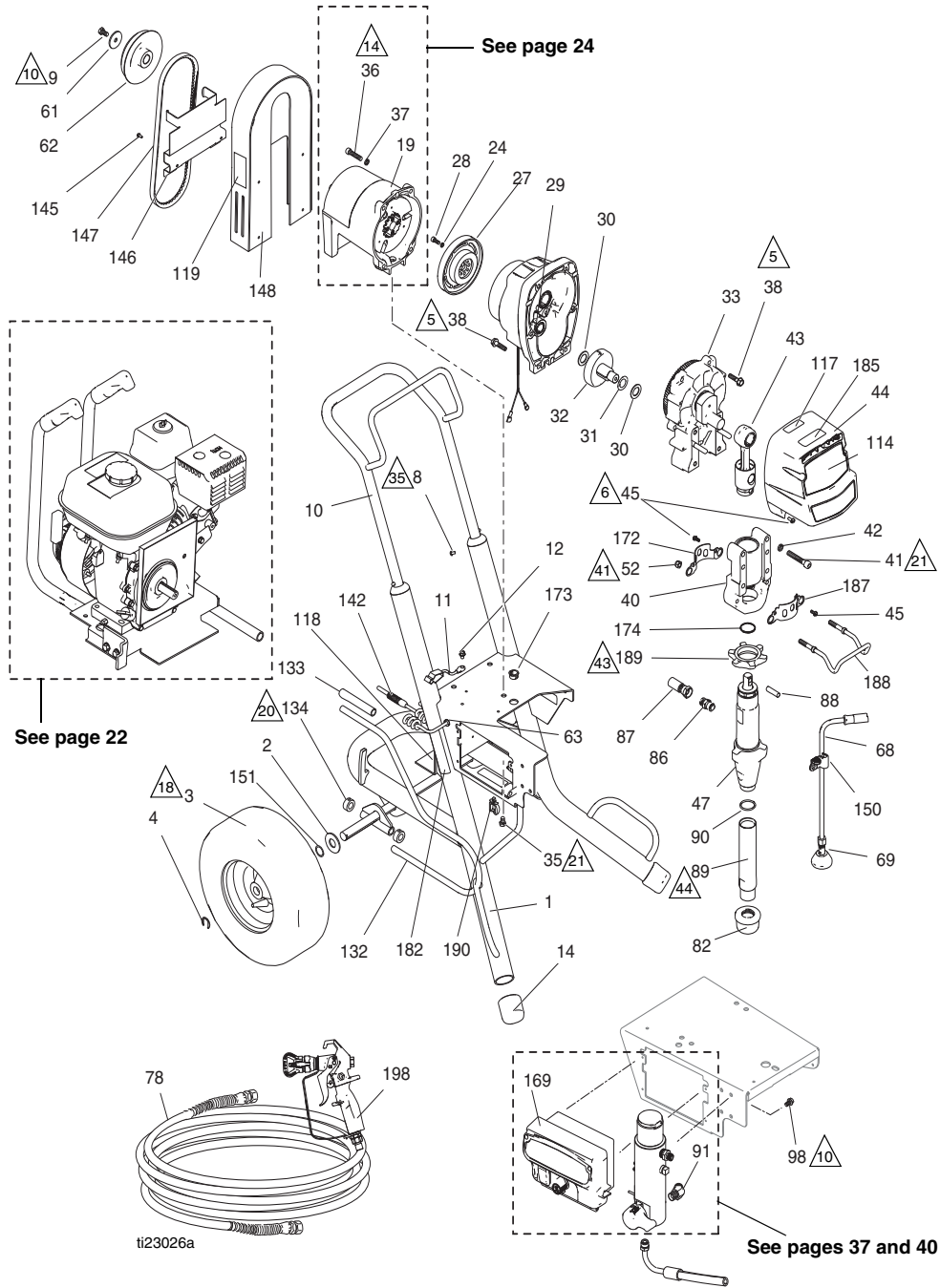
GMAX II 5900 IronMan Series

Parts List - GMAX II 5900 IronMan Series

Ref.	Part	Description	Qty.	Ref.	Part	Description	Qty.
1	16X778	FRAME, cart	1	119	16X349	LABEL, front, GMAX II, 5900	1
2	156306	WASHER, flat	2	120▲	15F638	LABEL, GMAX warning fire & skin	1
3	122267	WHEEL, pneumatic	2	121▲	194126	LABEL, warning	1
4	120211	CLIP, retaining	2	122▲	290228	LABEL, caution	1
11	237686	WIRE, ground assembly w/ clamp	1	127	119569	BUSHING, strain relief	1
12	112798	SCREW, thread forming, hex hd	1	130	16X821	BOX, control	1
14	15C871	CAP, leg	2	133	114687	CLIP, retainer	1
15	114530	ENGINE, gas, 5.5 HP, Honda	1	134	15F354	FUNNEL, oil (not shown)	1
16	110837	SCREW, flange, hex	2	143	116038	WASHER, wave spring	2
17	110838	NUT, lock	2	146	16X982	LABEL, ProConnect	1
18	183401	KEY, parallel	1	157	24A139	GUN, silver, RAC X, packaged	1
19	15E277	HOUSING, clutch, mach, 5900/7900	1	160	107505	PACKING, o-ring	1
20	108842	SCREW, cap, hex hd	4	164	15F947	SHIELD, magnetic	1
21	100214	WASHER, lock	4	171	16X385	PLATE, front, 5900, PC II	1
22	193680	COLLAR, shaft	1	172	16X324	CLAMP, pump, large	1
23†	108803	SCREW, hex, socket head	6	173	101550	SCREW, cap, sch	2
24†	105510	WASHER, lock, spring (hi-collar)	12	174	16C457	HANGER, pail	1
25†		ARMATURE, clutch, 5 in.	1	175	111040	NUT, lock, insert, nylock, 5/16	2
26†		HUB, armature	1	176	120583	NUT, hand	1
27†		ROTOR, clutch, 5 in.	1	177	16X833	FITTING, quick, disconnect, 3/8 npsm	1
28†	101682	SCREW, cap, sch	4	180	240797	HOSE, coupled, 3/8 in. x 50 ft	1
29	287465	HOUSING, pinion, 5900	1	181	240794	HOSE, coupled, 1/4 in. x 50 ft	1
30	114672	WASHER, thrust	2	182	164672	ADAPTER	1
31	114699	WASHER, thrust	1	184	189018	SWIVEL, assembly	1
32	287460	GEAR, combination, 5900	1	▲	16Y631	LABEL, warning	1
33	287469	HOUSING, drive, 5900, <i>includes 33a, 33b</i>	1	▲	16Y632	LABEL, warning	1
33a	116192	WASHER, thrust	1	▲	16Y633	LABEL, warning	1
33b	194173	WASHER	1	▲ Replacement Danger and Warning Labels, Tags and Cards are available at no cost.			
34	116618	MAGNET	1	† Included in Clutch Replacement Kit 241113.			
35	112395	SCREW, cap, flng hd	1	Part Specifications:			
36	102962	SCREW, cap sch	4				
37	104008	WASHER, lock, spring	4				
38	15C753	SCREW, mach, hex wash hd	6				
39	119562	SWITCH, reed w/connector	1				
40	24V088	HOUSING, bearing, 5900	1				
41	114666	SCREW, cap, socket head	4				
42	106115	WASHER, lock (hi-collar)	4				
43	24V085	ROD, connecting, 5900	1				
44	16Y748	COVER, front, 5900, <i>includes 45</i>	1				
45	118444	SCREW, mach, slot hex wash hd	5				
47	16X420	PUMP, displacement, 5900, <i>includes 86, 89, 90</i>	1				
68	244240	HOSE, coupled, <i>includes 69</i>	1				
69	241920	DEFLECTOR, threaded	1				
76	114678	BUSHING, strain relief	1				
79	16X203	CLIP, drain line	1				
82	15V573	STRAINER, (1-11 1/2 NPSM)	1				
86	16Y579	FITTING	1				
87	16X904	HOSE, coupled	1				
89	248215	TUBE, intake	1				
90	118494	PACKING, o-ring	1				
98	125926	FITTING, 90 deg	1				
99	113161	SCREW, flange, hex hd	3				
108	114528	SCREW, mach, phillips, pnhd	2				

GMAX II 5900 Convertible Series

GMAX II 5900 Convertible Series



GMAX II 5900 Convertible Series

Parts List - GMAX II 5900 Convertible Series

Ref.	Part	Description	Qty.	Ref.	Part	Description	Qty.
1	287423	FRAME, cart	1	132	245688	BAR, torsion, <i>includes 133, 134</i>	1
2	156306	WASHER, flat	2	133	114808	CAP, vinyl	1
3	119509	WHEEL, pneumatic	2	134	198772	COLLAR, torsion bar	2
4	15E891	CLIP, retaining	2	142	119584	CORD, power, convertible	1
8	108795	SCREW, mach, pnh	4	145	100078	SCREW, thd forming, hex hd	4
9	121727	SCREW, cap, hex hd	1	146	198996	BRACKET, belt guide	1
10	24A250	HANDLE, cart	1	147	193547	BELT, Vee, 30	1
11	237686	WIRE, ground assembly w/ clamp	1	148	198691	GUARD, belt	1
12	112798	SCREW, thread forming, hex hd	1	150	278204	CLIP, drain line	1
14	276974	CAP, leg	2	151	116038	WASHER, wave spring	2
19	287519	HOUSING, clutch	1	155	15F354	FUNNEL, oil (not shown)	1
24*	105510	WASHER, lock, spring (hi-collar)	4	169	16X822	BOX, control	1
27*		ROTOR, clutch, 5 in.	1	172	15C762	SHIELD, pump rod	1
28*	101682	SCREW, cap, sch	4	173	119569	BUSHING, strain relief	1
29	287465	HOUSING, pinion, 5900	1	174	119778	SPRING, retaining	1
30	114672	WASHER, thrust	2	182▲	15F638	LABEL, warning	1
31	114699	WASHER, thrust	1	185	16X983	LABEL	1
32	287460	GEAR, combination	1	187	16X770	SHIELD, pump rod	1
33	287700	HOUSING, drive, convert	1	188	16C457	HANGER, pail	1
35	112395	SCREW, cap, flng hd	3	189	193031	NUT, retaining	1
36	102962	SCREW, cap sch	4	190	114687	CLIP, retainer	1
37	104008	WASHER, lock, spring	4	198	288420	GUN, contractor, RAC X, packaged	1
38	15C753	SCREW, mach, torx, hex wash hd	6	▲	16Y631	LABEL, warning	1
40	24V027	HOUSING, bearing	1	▲	16Y632	LABEL, warning	1
41	114666	SCREW, cap, socket hd	4	▲	16Y633	LABEL, warning	1
42	106115	WASHER, lock spring (hi-collar)	4				
43	24V021	ROD, connecting	1				
44	16Y748	COVER, front; <i>includes 45</i>	1				
45	118444	SCREW, machine hex washer head	8				
47	16Y706	PUMP, displacement, <i>includes 86, 89, 90</i>	1				
52	111040	NUT, lock, insert, nylock, 5/16	2				
61	112717	WASHER	1				
62	198688	PULLEY, engine	1				
63	114425	BUSHING, strain relief	1				
68	244240	HOSE, coupled, <i>includes 69</i>	1				
69	241920	DEFLECTOR, threaded	1				
78	240794	HOSE, coupled, 1/4 in. x 50 ft	1				
82	189920	STRAINER, (1-11 1/2 npsm)	1				
86	196178	FITTING, pump	1				
87	16Y667	HOSE, coupled	1				
88	15F856	PIN, pump	1				
89†	248215	TUBE, intake	1				
90†	118494	O-RING	1				
91	122533	FITTING, 45 deg	1				
98	113161	SCREW, flange, hex hd	3				
114	16X358	LABEL, brand	1				
117▲	290228	LABEL, caution	1				
118▲	804495	LABEL, warning	1				
119	195098	LABEL, instruction (English)	1				

▲ Replacement Danger and Warning labels, tags, and cards are available at no cost.

* Included in Clutch Repair Kit 241113

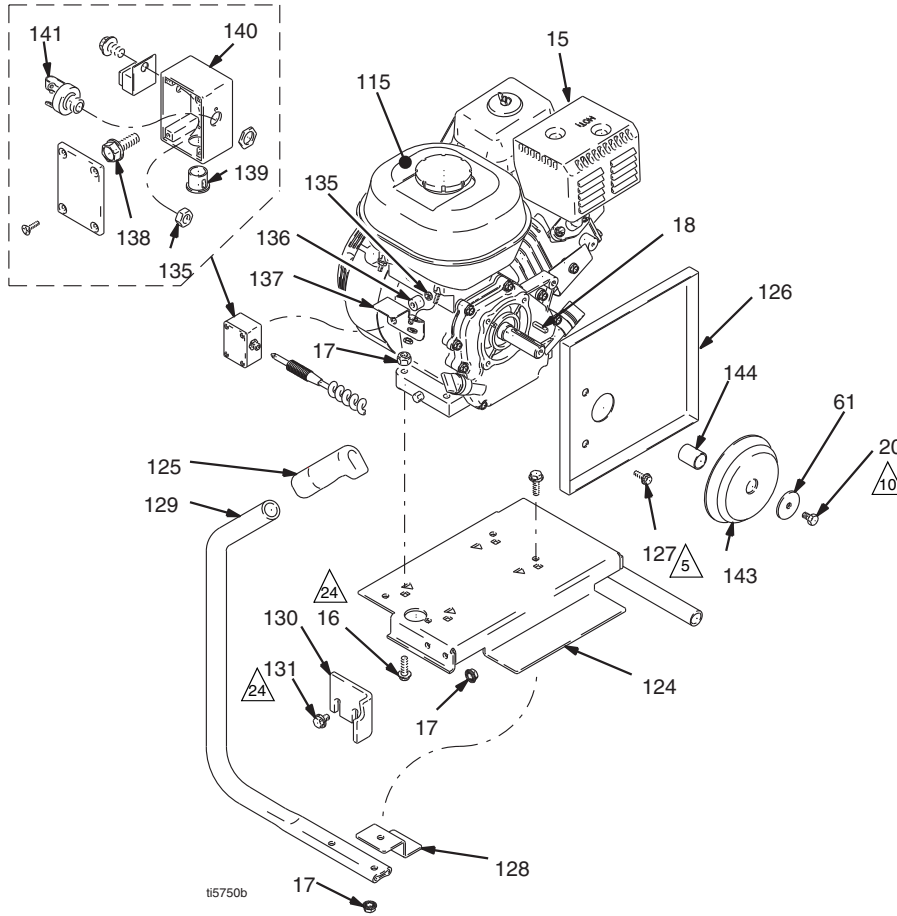
Part Specifications:

Ref.	Instruction
▲5	Torque to 190-210 in-lb (21.5-23.7 N•m)
▲6	Torque to 30-35 in-lb (3.4-3.9 N•m)
▲10	Torque to 115-135 in-lb (12.9-15.3 N•m)
▲14	Torque to 130-150 in-lb (14.7-16.9 N•m)
▲18	Inflate tires to 28-32 psi (1.93-2.21 bar/0.193-0.221 MPa)
▲20	Torque to 10-15 in-lb (1.1-1.7 N•m)
▲21	Torque to 20-30 ft-lb (27.1-40.1 N•m)
▲35	Torque to 25-35 in-lb (2.8-3.9 N•m)
▲41	Torque to 200-230 in-lb (22.5-25.9 N•m)
▲43	Torque to 75 +/- 5 ft-lb (101.6 +/- 6.7 N•m)
▲44	Torque to 70-90 in-lb (7.9-10.1 N•m)

GMAX II 5900 Convertible Series

GMAX II 5900 Convertible Series










Engine Detail



GMAX II 5900 Convertible Series

GMAX II 5900 Convertible Series

Engine Detail - Parts List

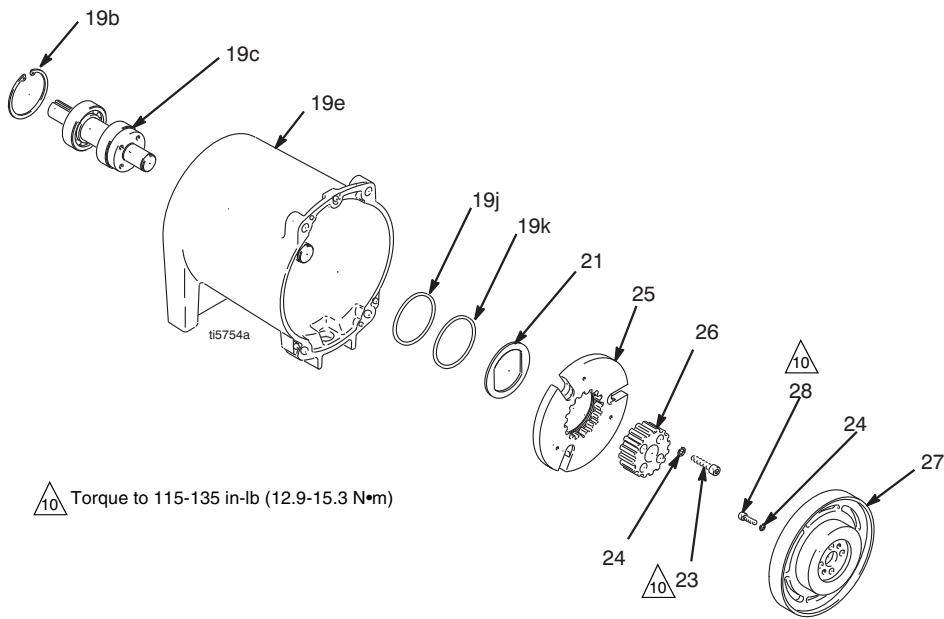
Ref.	Part	Description	Qty.	Ref.	Part	Description	Qty.								
15	114530	ENGINE, gas, 5.5 Honda	1	136	116149	SPACER	1								
16	114653	SCREW, cap, flange hd	4	137	194414	BRACKET, J-box	1								
17	110996	NUT, flng hd, hex	6	138	114813	SCREW, mach, hex washer hd	1								
18	183401	KEY, parallel	1	139	114678	BUSHING, snap	1								
20	119717	SCREW, cap, hex hd	1	140	194181	BOX, junction, engine	1								
61	112717	WASHER	1	141	114805	JACK, 1/4 engine	1								
115	194126	LABEL, warning	1	143	15E896	PULLEY, engine	1								
124	245272	BASE, mounting	1	144	15B314	SLEEVE, motor shaft	1								
125	116139	GRIP, handle	2	Part Specifications:											
126	198689	BRACKET, belt guard (motor)	1	<table border="1"> <thead> <tr> <th>Ref.</th> <th>Instruction</th> </tr> </thead> <tbody> <tr> <td></td> <td>Torque to 190-210 in-lb (21.5-23.7 N•m)</td> </tr> <tr> <td></td> <td>Torque to 115-135 in-lb (12.9-15.3 N•m)</td> </tr> <tr> <td></td> <td>Torque to 17-23 ft-lb (23.0-31.1 N•m)</td> </tr> </tbody> </table>				Ref.	Instruction		Torque to 190-210 in-lb (21.5-23.7 N•m)		Torque to 115-135 in-lb (12.9-15.3 N•m)		Torque to 17-23 ft-lb (23.0-31.1 N•m)
Ref.	Instruction														
	Torque to 190-210 in-lb (21.5-23.7 N•m)														
	Torque to 115-135 in-lb (12.9-15.3 N•m)														
	Torque to 17-23 ft-lb (23.0-31.1 N•m)														
127	112406	SCREW	3												
128	198997	BRACKET, tension	1												
129	198693	HANDLE, slide, engine	2												
130	198695	BRACKET, torsion bar	1												
131	110963	SCREW, cap, hex hd, flange	2												
135	114816	NUT, hex	1												

GMAX II 5900 Convertible Series

GMAX II 5900 Convertible Series

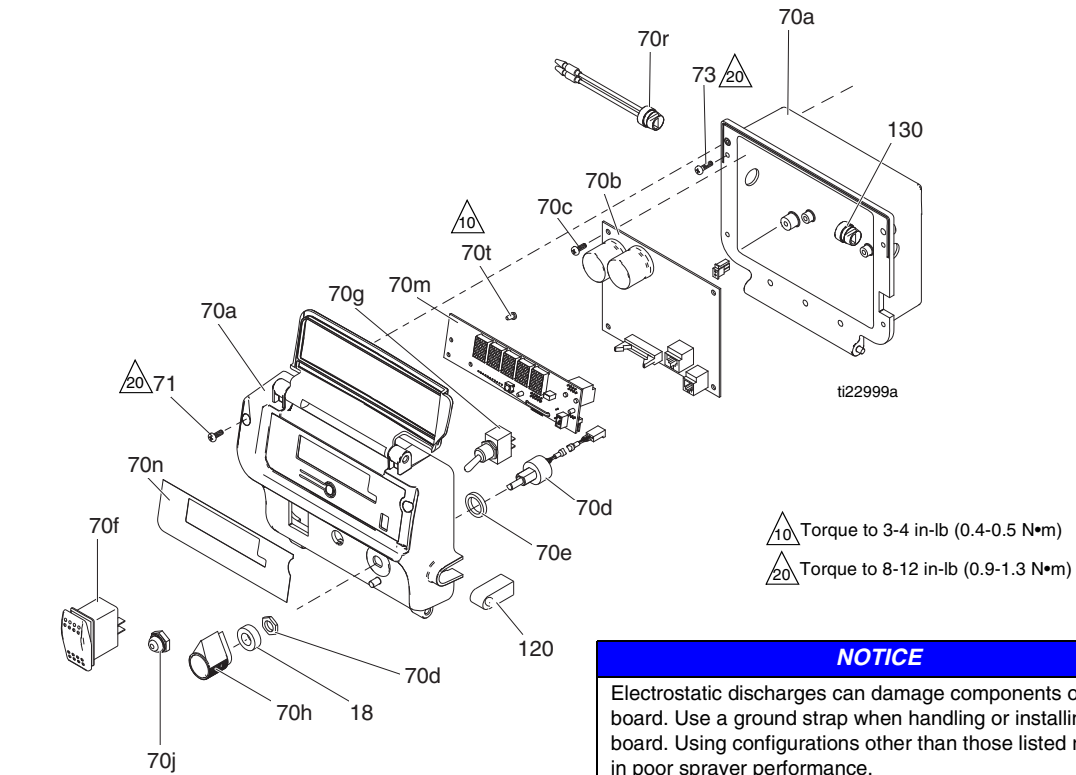
Clutch Housing - Parts Drawing and List

Ref	Part	Description	Qty	Ref	Part	Description	Qty
19	287519	HOUSING, clutch, <i>includes 19b, 19c, 19e, 19j & 19k</i>	1	24	105510*	WASHER, lock, spring (hi-collar)	8
19b	114962	RING, retaining, internal	1	25	*	ARMATURE, clutch, 5 in.	1
19c	287422	SHAFT, drive, input	1	26		HUB, armature	1
19e	15E887	HOUSING, clutch	1	27	*	ROTOR, clutch, 5 in.	1
19j	115078	O-RING	1	28	101682*	SCREW, cap, sch	4
19k	115079	O-RING	1	* Included in Clutch Repair Kit 241113			
21	15E894	STOP, armature	1				
23	108803*	SCREW, hex, socket head	4				

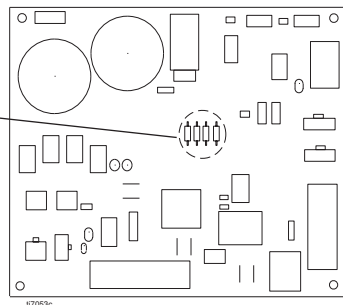
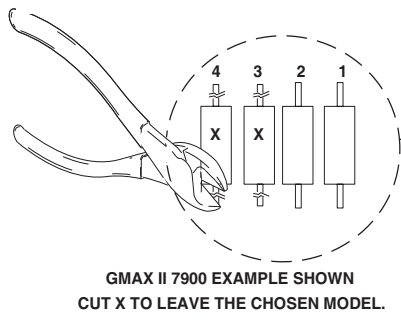


Control Box 16X821

Control Box 16X821



NOTICE
Electrostatic discharges can damage components on PC board. Use a ground strap when handling or installing PC board. Using configurations other than those listed results in poor sprayer performance.



- 1 Refer to your sprayer repair manual for the procedures.
- 2 Perform **Pressure Relief Procedure**.
- 3 Remove pressure control cover.
- 4 Remove PC board.
- 5 Cut out and remove the resistor(s) on PC board according to figure and table.
- 6 Install PC board.
- 7 Install pressure control cover.

	3900		5900			7900	
	GMAX II 3900	International GMAX II 3900	GMAX II 5900/5900HD	GMAX II 5900/5900HD International	GMAX II 5900 Convertible	GMAX II 7900/7900HD	GMAX II 7900/7900HD International
1	x	x					x
2			x	x			
3		x	x			x	x
4				x	x	x	x

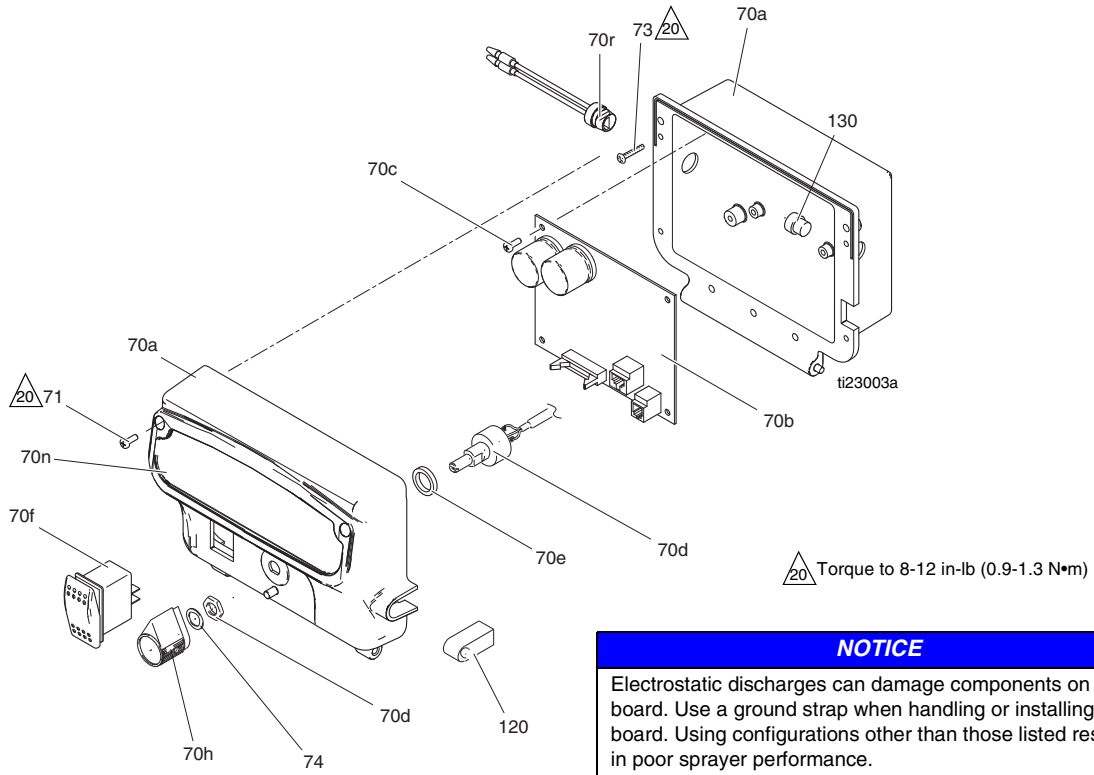
Control Box 16X821

Parts List - Control Box 16X821

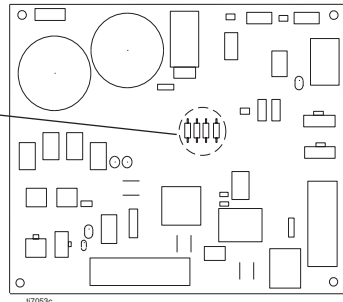
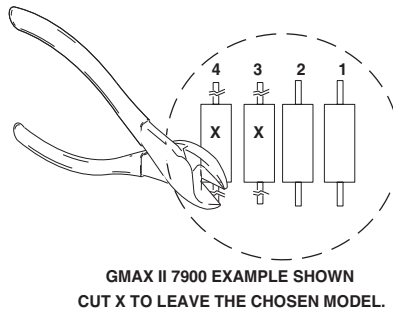
Ref.	Part	Description	Qty.	Ref.	Part	Description	Qty.
18	15C973	GASKET	1	70j	195428	BOOT, toggle	1
70	16X821	CONTROL BOX		70m	16Y496	KIT, display, <i>includes 70t</i>	1
70a	24U347	BOX	1	70n	16X801	LABEL, brand	1
70b	17A095	CONTROL, board	1	70r	119545	BUSHING, strain, relief	1
70c	117317	SCREW, plastite, pan head	4	70t	115522	SCREW, mach, pnh	3
70d	256219	POTENTIOMETER	1	71	116585	SCREW, pan, X recess, sst	2
70f	116752	SWITCH, rocker	1	73	113160	SCREW, mach, slot, hex wash hd	4
70e	198650	SPACER, shaft	1				
70g	119541	SWITCH, toggle	1	120	16Y415	GASKET, transducer	1
70h	116167	KNOB, potentiometer	1	130	119545	BUSHING, strain, relief	1

Control Box 16X822

Control Box 16X822



NOTICE
Electrostatic discharges can damage components on PC board. Use a ground strap when handling or installing PC board. Using configurations other than those listed results in poor sprayer performance.



- 1 Refer to your sprayer repair manual for the procedures.
- 2 Perform **Pressure Relief Procedure**.
- 3 Remove pressure control cover.
- 4 Remove PC board.
- 5 Cut out and remove the resistor(s) on PC board according to figure and table.
- 6 Install PC board.
- 7 Install pressure control cover.

	3900		5900			7900	
	GMAX II 3900	International GMAX II 3900	GMAX II 5900/5900HD	GMAX II 5900/5900HD International	GMAX II 5900 Convertible	GMAX II 7900/7900HD	GMAX II 7900/7900HD International
1	x	x					x
2			x	x			
3		x	x			x	x
4				x	x	x	x

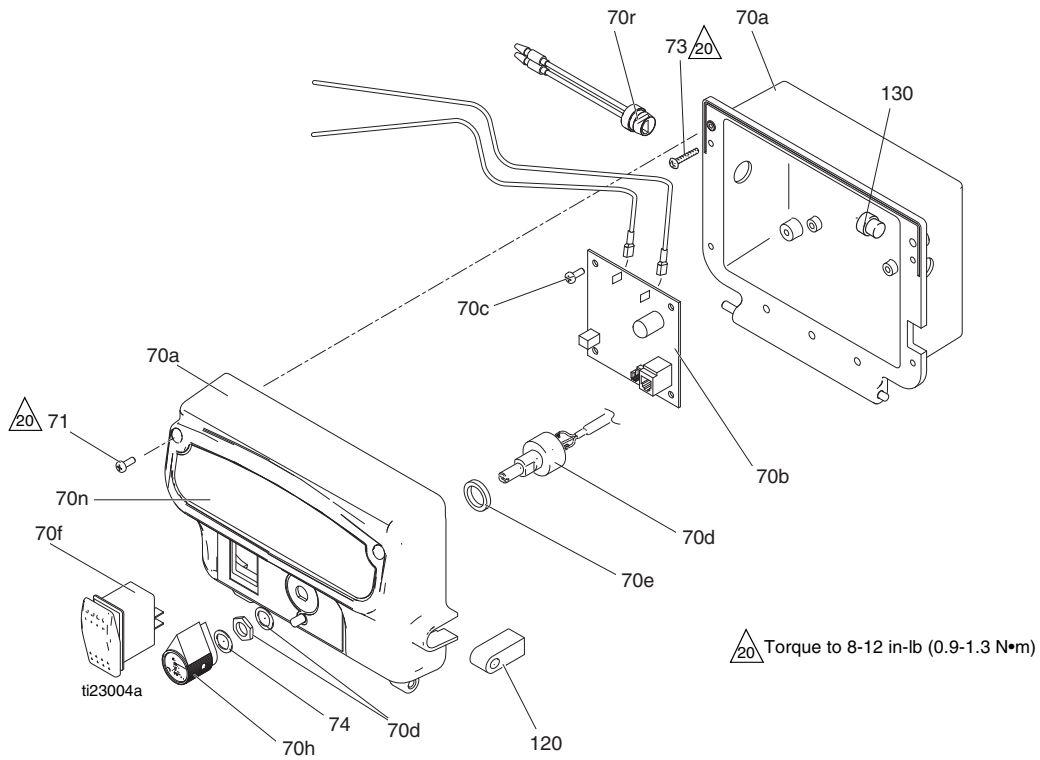
Control Box 16X822

Parts List - Control Box 16X822

Ref.	Part	Description	Qty.	Ref.	Part	Description	Qty.
70	16X822	CONTROL BOX		70r	119545	BUSHING, strain, relief	1
70a	24U346	BOX	1	71	116585	SCREW, pan, X recess, sst	2
70b	17A095	CONTROL, board	1	73	116585	SCREW, pan, X recess, sst	4
70c	117317	SCREW, plastite, pan head	4			(5900 Convertible)	
70d	256219	POTENTIOMETER	1		113160	SCREW, mach, slot, hex	4
70e	198650	SPACER, shaft	1			wash hd	
70f	116752	SWITCH, rocker	1	74	15C973	GASKET	1
70h	116167	KNOB, potentiometer	1	120	16Y415	GASKET, transducer	1
70n	16Y782	LABEL, brand	1	130	119545	BUSHING, strain, relief	1

Control Box 16X744

Control Box 16X744

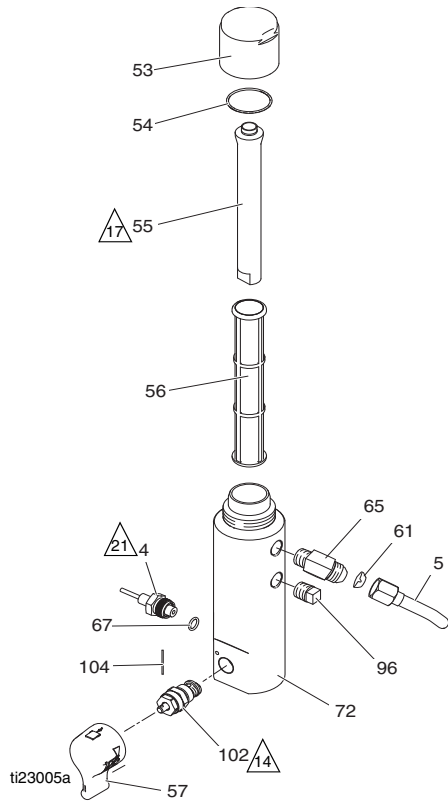


Parts List - Control Box 16X744

Ref.	Part	Description	Qty.	Ref.	Part	Description	Qty.
70	16X744	CONTROL BOX, GMAX 3400		70r	119545	BUSHING, strain, relief	1
70a	24U346	BOX	1	71	116585	SCREW, pan, X recess, sst	2
70b	287486	KIT, repair, control board	1	73	116585	SCREW, pan, X recess, sst (5900 Convertible)	4
70c	117317	SCREW, plastite, pan head	4		113160	SCREW, mach, slot, hex wash hd	4
70d	256219	POTENTIOMETER	1	74	15C973	GASKET	1
70e	198650	SPACER, shaft	1	120	16Y415	GASKET, transducer	1
70f	116752	SWITCH, rocker	1	130	119545	BUSHING, strain, relief	1
70h	116167	KNOB, potentiometer	1				
70n	16Y782	LABEL, brand	1				

Filter

Filter



Parts List - Filter

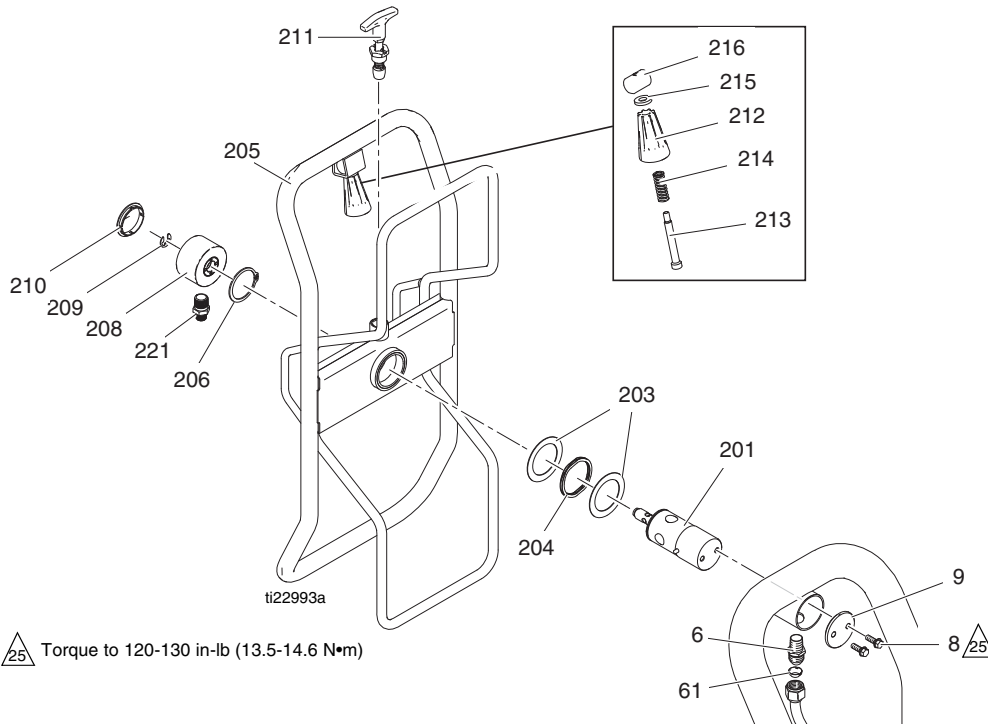
Ref.	Part	Description	Qty.	Ref.	Part	Description	Qty.
4	243222	TRANSDUCER, pressure control <i>includes 63</i>	1	72	15E284	HOUSING, filter	1
5	16C381	TUBE, GMAX 5900/7900 (ProContractor)	1	96	15G331	PLUG, pipe	1
	16C384	TUBE, GMAX 3900 (ProContractor)	1	102	257352	VALVE, prime, heavy duty, <i>includes 57, 104</i>	1
53	287285	CAP, filter, <i>includes 54, 55</i>	1	104	15C972	PIN, spring	1
54	117285	PACKING, o-ring	1				
55	15C766	TUBE, diffusion	1				
56	244067	FILTER, fluid	1				
57	24E234	KIT, handle 2 position	1				
61	123739	SEAL, fitting, flared	1				
65	122533	FITTING, 45 deg elbow (ProConnect)	1				
	162485	FITTING, adapter (7900, IronMan)	1				
	196177	FITTING, adapter (3900/5900 Standard, Convertible and Lo-Boy)	1				
	196178	FITTING, adapter (5900 IronMan/ 7900 Standard/5900HD/7900HD Standard)	1				
67	111457	PACKING, o-ring	1				

Part Specifications:

Ref.	Instruction
△14	Torque to 130-150 in-lb (14.6-16.9 N•m)
△17	Torque to 90-110 in-lb (10.1-12.4 N•m)
△21	Torque to 35-45 ft-lb (47.4-61.0 N•m)

Hose Reel (ProContractor Sprayers)

Hose Reel (ProContractor Sprayers)



Parts List - Hose Reel (ProContractor Sprayers)

Ref.	Part	Description	Qty.	Ref.	Part	Description	Qty.
6	121311	FITTING, connector, NPT x JIC	1	209	122347	RING, retaining, external	1
8	260212	SCREW, hex washer hd	2	210	122787	CAP	1
9	16C975	PLATE, pivot mount	1	211	24E400	PIN, pop, lock out	1
61	123739	SEAL, fitting, flared	1	212	278085	HANDLE, swivel	1
201	24E016	TUBE, hose reel, pivot	1	213	122518	SCREW, shoulder, sch	1
203	122607	WASHER, flat	2	214	122542	SPRING, die	1
204	122534	SPRING, wave	1	215	122669	WASHER, flat	1
205	24B691	REEL, hose	1	216	15X618	NUT, swivel, handle	1
206	122524	RING, retaining, external	1	221	164672	ADAPTER (3900/5900 ProContractor only)	1
208	24B248	CAP, swivel, complete	1		162485	ADAPTER	1

Pressure Control Wiring Diagrams

3900/5900/7900 Sprayers

