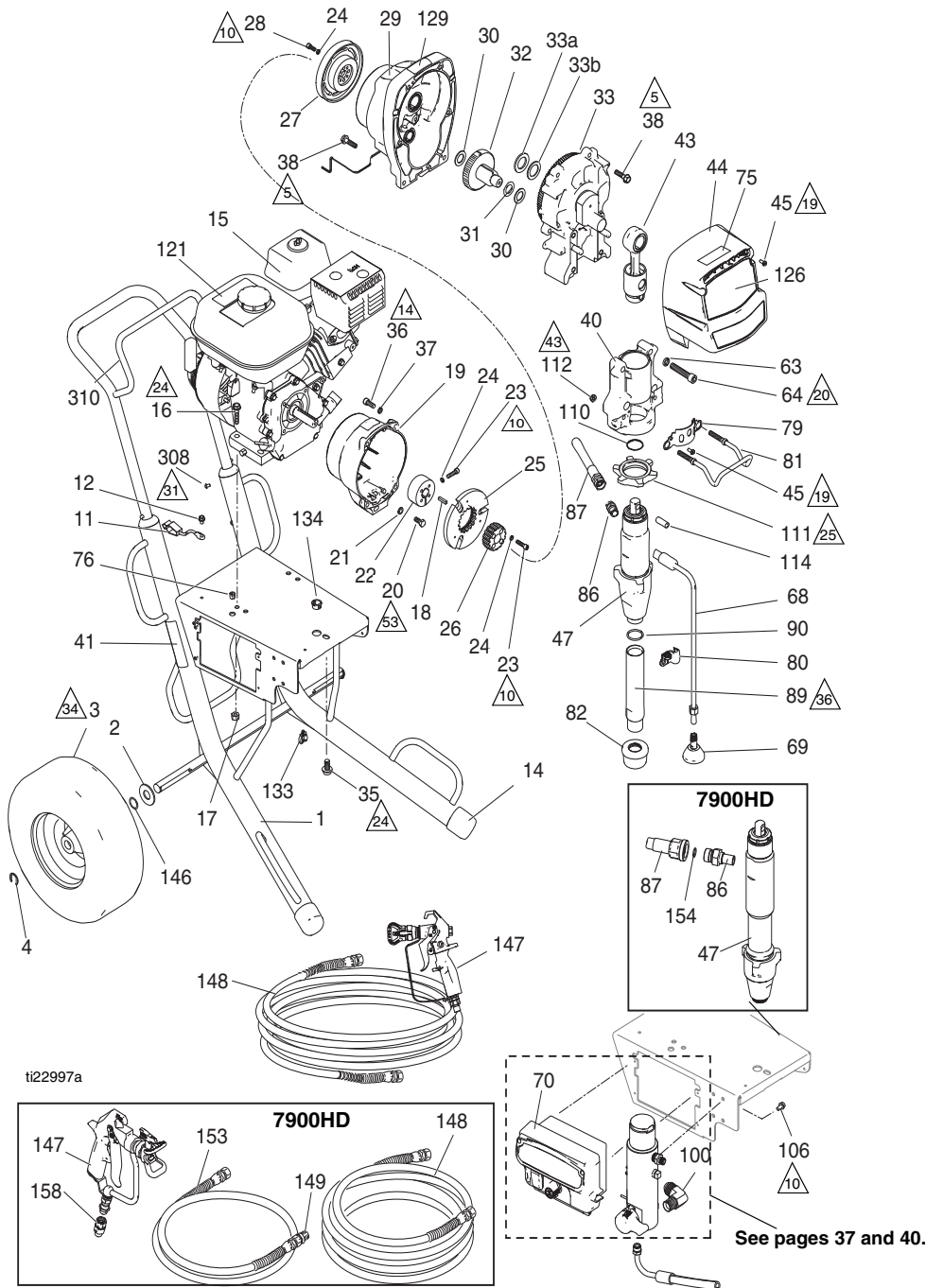


Graco GMAX 7900

GMAX II 7900/TexSpray 7900HD Standard Series/Roof Rig

**GMAX II 7900/TexSpray 7900HD Standard Series/Roof Rig**



GMAX II 7900/TexSpray 7900HD Standard Series/Roof Rig

**Parts List - GMAX II 7900/TexSpray 7900HD Standard Series/Roof Rig**

| Ref. | Part   | Description  | Qty. | Ref. | Part   | Description                      | Qty. |
|------|--------|--|------|------|--------|----------------------------------|------|
| 1    | 287370 | FRAME  | 1    | 89   | 248215 | TUBE, intake, <i>includes 90</i> | 1    |
| 2    | 156306 | WASHER, flat   | 2    | 90   | 118494 | PACKING, o-ring, 7900            | 1    |
| 3    | 119509 | WHEEL, pneumatic                                     | 2    | 100  | 125926 | FITTING, 90 deg                  | 1    |
| 4    | 15E891 | CLIP, retaining                                      | 2    | 106  | 113161 | SCREW, flange, hex hd            | 3    |
| 11   | 237686 | WIRE, ground assembly w/ clamp                       | 1    | 110  | 119677 | SPRING, retaining                | 1    |
| 12   | 112798 | SCREW, thread forming, hex hd                        | 1    | 111  | 193394 | NUT, retaining                   | 1    |
| 14   | 276974 | CAP, leg   | 2    | 112  | 111040 | NUT, lock, insert, nylock, 5/16  | 2    |
| 15   | 116080 | ENGINE, gas, 6.5 HP, Honda                           | 1    | 114  | 197443 | PIN, pump                        | 1    |
| 16   | 110837 | SCREW, flange, hex                                   | 2    | 121▲ | 194126 | LABEL, warning                   | 1    |
| 17   | 110838 | NUT, lock  | 2    | 126  | 16X350 | LABEL, identification, 7900      | 1    |
| 18   | 183401 | KEY, parallel  | 1    |      | 16X355 | LABEL, identification, 7900HD    | 1    |
| 19   | 15E277 | HOUSING, clutch, mach, 5900/7900                     | 1    | 129▲ | 290228 | LABEL, caution                   | 1    |
| 20   | 108842 | SCREW, cap, hex hd                                   | 4    | 133  | 114687 | CLIP, retainer                   | 1    |
| 21   | 100214 | WASHER, lock   | 4    | 134  | 119569 | BUSHING, strain relief           | 1    |
| 22   | 193680 | COLLAR, shaft  | 1    | 145  | 15F354 | FUNNEL, oil (not shown)          | 1    |
| 23†  | 108803 | SCREW, hex, socket head                              | 6    | 146  | 116038 | WASHER, wave spring              | 2    |
| 24†  | 105510 | WASHER, lock, spring                                 | 10   | 147  | 288420 | GUN, contractor, RAC X, packaged | 1    |
| 25†  |        | ARMATURE, clutch, 5 in.                              | 1    |      | 241705 | GUN, spray, texture              | 1    |
| 26†  |        | HUB, armature  | 1    | 148  | 240797 | HOSE, coupled, 3/8 in. x 50 ft   | 1    |
| 27†  |        | ROTOR, clutch, 5 in.                                 | 1    | 149  | 159841 | O-RING                           | 1    |
| 28†  | 101682 | SCREW, cap, sch                                      | 4    | 153  | 241735 | HOSE, coupled, 1/4 in. x 3 ft    | 1    |
| 29   | 287466 | HOUSING, pinion, 7900                                | 1    | 154  | 102982 | O-RING, TexSpray, 7900HD         | 1    |
| 30   | 114672 | WASHER, thrust                                       | 2    | 158  | 189018 | SWIVEL, assembly, 7900 HD        | 1    |
| 31   | 114699 | WASHER, thrust                                       | 1    | 308  | 108795 | SCREW, mach, pnh                 | 4    |
| 32   | 287459 | GEAR, combination, 7900                              | 1    | 310  | 24A250 | HANDLE, cart                     | 1    |
| 33   | 287470 | HOUSING, drive, 7900, <i>includes 33a,33b</i>        | 1    | ▲    | 16Y631 | LABEL, warning                   | 1    |
| 33a  | 116192 | WASHER, thrust                                       | 1    | ▲    | 16Y632 | LABEL, warning                   | 1    |
| 33b  | 194173 | WASHER   | 1    | ▲    | 16Y633 | LABEL, warning                   | 1    |
| 35   | 112395 | SCREW, cap, flng hd                                  | 1    |      |        |                                  |      |
| 36   | 102962 | SCREW, cap sch                                       | 4    |      |        |                                  |      |
| 37   | 104008 | WASHER, lock, spring                                 | 4    |      |        |                                  |      |
| 38   | 15C753 | SCREW, mach, hex wash hd                             | 6    |      |        |                                  |      |
| 40   | 24V028 | HOUSING, bearing, 7900                               | 1    |      |        |                                  |      |
| 41▲  | 15F638 | LABEL, GMAX warning fire & skin                      | 1    |      |        |                                  |      |
| 43   | 24V022 | ROD, connecting, 7900                                | 1    |      |        |                                  |      |
| 44   | 16Y749 | COVER, front, 7900 (includes 45)                     | 1    |      |        |                                  |      |
| 45   | 118444 | SCREW, mach, slot hex wash hd                        | 6    |      |        |                                  |      |
| 47   | 16X423 | PUMP, displacement, 7900, <i>includes 86, 89, 90</i> | 1    |      |        |                                  |      |
|      | 16X425 | PUMP, displacement, 7900HD, <i>includes 86</i>       | 1    |      |        |                                  |      |
| 63   | 112600 | WASHER, lock, spring                                 | 4    |      |        |                                  |      |
| 64   | 112599 | SCREW, cap, socket head                              | 4    |      |        |                                  |      |
| 68   | 244240 | HOSE, coupled, <i>includes 69</i>                    | 1    |      |        |                                  |      |
| 69   | 241920 | DEFLECTOR, threaded                                  | 1    |      |        |                                  |      |
| 70   | 16X822 | BOX, control, standard                               | 1    |      |        |                                  |      |
| 75   | 16X983 | LABEL, standard series                               | 1    |      |        |                                  |      |
| 76   | 114678 | BUSHING, strain relief                               | 1    |      |        |                                  |      |
| 79   | 16X770 | SHIELD, pump rod                                     | 1    |      |        |                                  |      |
| 80   | 278204 | CLIP, drain line                                     | 1    |      |        |                                  |      |
| 81   | 16C457 | HANGER, pail   | 1    |      |        |                                  |      |
| 82   | 189920 | STRAINER, (1-11 1/2 NPSM)                            | 1    |      |        |                                  |      |
| 86   |        | FITTING, pump  | 1    |      |        |                                  |      |
|      | 196178 | 7900   | 1    |      |        |                                  |      |
|      | 16X835 | TexSpray, 7900HD                                     | 1    |      |        |                                  |      |
| 87   |        | HOSE, coupled  | 1    |      |        |                                  |      |
|      | 16X909 | 7900   | 1    |      |        |                                  |      |
|      | 16X905 | TexSpray, 7900HD                                     | 1    |      |        |                                  |      |

▲ Replacement Danger and Warning Labels, Tags and Cards are available at no cost.

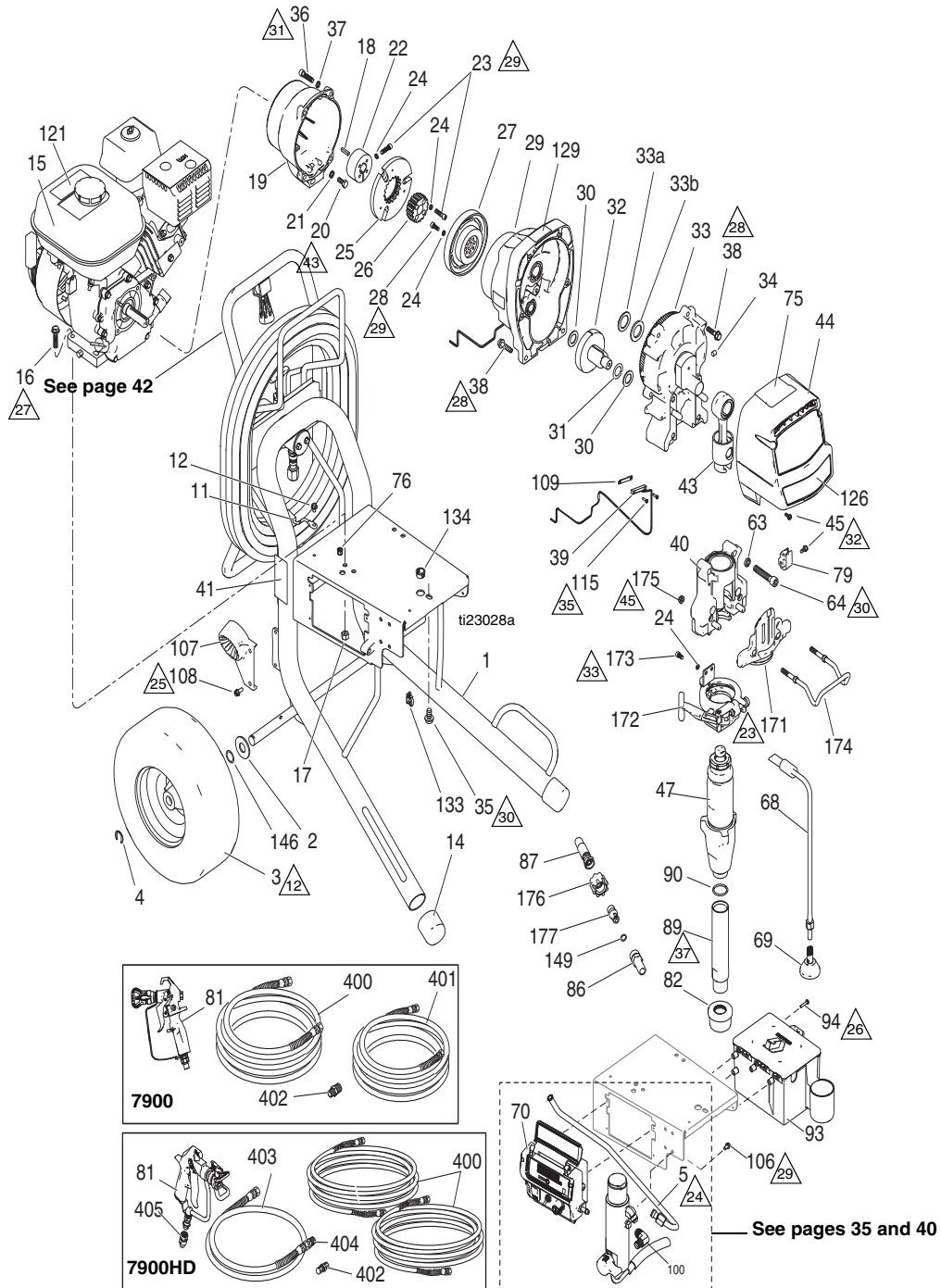
† Included in Clutch Replacement Kit 241113.

**Part Specifications:**

| Ref. | Instruction  |
|------|--|
| 5    | Torque to 190-210 in-lb (21.5-23.7 N•m)                    |
| 10   | Torque to 115-135 in-lb (12.9-15.3 N•m)                    |
| 14   | Torque to 130-150 in-lb (14.7-16.9 N•m)                    |
| 19   | Torque to 30-35 in-lb (3.4-3.9 N•m)                        |
| 20   | Torque to 35-45 ft-lb (47.5-61.0 N•m)                      |
| 24   | Torque to 20 +/- 3 ft-lb (21.7 +/- 4.1 N•m)                |
| 25   | Torque to 75 +/- 5 ft-lb (101.7 +/- 6.8 N•m)               |
| 31   | Torque to 25-35 in-lb (2.8-3.9 N•m)                        |
| 34   | Inflate tires to 28-32 psi (1.93-2.21 bar/0.193-0.221 MPa) |
| 36   | Torque to 70-90 in-lb (7.9-10.2 N•m)                       |
| 43   | Torque to 200-230 in-lb (22.6-25.6 N•m)                    |
| 53   | Torque to 170-190 in-lb (19.2-21.5 N•m)                    |

GMAX II 7900/TexSpray 7900HD ProContractor Series

# GMAX II 7900/TexSpray 7900HD ProContractor Series



GMAX II 7900/TexSpray 7900HD ProContractor Series

**Parts List - GMAX II 7900/TexSpray 7900HD ProContractor Series**

| Ref. | Part   | Description                                   | Qty. | Ref. | Part   | Description                                    | Qty. |
|------|--------|---|------|------|--------|--|------|
| 1    | 24D047 | FRAME, hose reel                              | 1    | 106  | 113161 | SCREW, flange, hex hd                          | 3    |
| 2    | 156306 | WASHER, flat                                  | 2    | 107  | 278083 | GUIDE, hose                                    | 1    |
| 3    | 119509 | WHEEL, pneumatic                              | 2    | 108  | 117633 | SCREW, slot hex wash hd                        | 2    |
| 4    | 15E891 | CLIP, retaining                               | 2    | 109  | 15F947 | SHIELD, magnetic                               | 1    |
| 5    | 16C381 | TUBE, hydraulic, GMAX 5900/7900               | 1    | 115  | 114528 | SCREW, mach, phillips, pnhd                    | 2    |
| 11   | 237686 | WIRE, ground assembly w/ clamp                | 1    | 121▲ | 194126 | LABEL, warning                                 | 1    |
| 12   | 112798 | SCREW, thread forming, hex hd                 | 1    | 126  | 16X350 | LABEL, identification, 7900                    | 1    |
| 14   | 276974 | CAP, leg                                      | 2    |      | 16X355 | LABEL, identification, TexSpray 7900           |      |
| 15   | 116080 | ENGINE, gas, 6.5 HP, Honda                    | 1    | 129  | 290228 | LABEL, caution                                 | 1    |
| 16   | 110837 | SCREW, flange, hex                            | 2    | 133  | 114687 | CLIP, retainer                                 | 1    |
| 17   | 110838 | NUT, lock                                     | 2    | 134  | 119569 | BUSHING, strain relief                         | 1    |
| 18   | 183401 | KEY, parallel                                 | 1    | 143  | 15F354 | FUNNEL, oil (not shown)                        | 1    |
| 19   | 15E277 | HOUSING, clutch, mach (5900/7900)             | 1    | 146  | 116038 | WASHER, wave spring                            | 2    |
| 20   | 108842 | SCREW, cap, hex hd                            | 4    | 149  |        | O-RING   |      |
| 21   | 100214 | WASHER, lock                                  | 1    |      | 107505 | 7900   | 1    |
| 22   | 193680 | COLLAR, shaft                                 | 1    |      | 102982 | TexSpray, 7900HD                               | 1    |
| 23†  | 108803 | SCREW, hex, socket head                       | 6    | 171  | 16X209 | PLATE, front, ProConnect II                    | 1    |
| 24†  | 105510 | WASHER, lock, spring                          | 12   | 172  | 16X324 | CLAMP, pump, large                             | 1    |
| 25†  |        | ARMATURE, clutch, 5 in.                       | 1    | 173  | 101550 | SCREW, cap, sch                                | 2    |
| 26†  |        | HUB, armature                                 | 1    | 174  | 16C457 | HANGER, pail                                   | 1    |
| 27†  |        | ROTOR, clutch, 5 in.                          | 1    | 175  | 112746 | NUT, lock, nylon, thin pattern                 | 2    |
| 28†  | 101682 | SCREW, cap, sch                               | 4    | 176  | 120583 | NUT, hand, 7900 only                           | 1    |
| 29   | 287466 | HOUSING, pinion, 7900                         | 1    | 177  | 16X833 | FITTING, quick disconnect, 3/8 npsm, 7900 only | 1    |
| 30   | 114672 | WASHER, thrust                                | 2    |      |        |  |      |
| 31   | 114699 | WASHER, thrust                                | 1    | 400  | 240797 | HOSE, coupled, 3/8 in. x 50 ft, 7900           | 1    |
| 32   | 287459 | GEAR, combination, 7900                       | 1    |      | 240797 | HOSE, coupled, 3/8 in. x 50 ft, 7900HD         | 2    |
| 33   | 287470 | HOUSING, drive, 7900, includes 33a, 33b       | 1    | 401  | 240794 | HOSE, coupled, 1/4 in. x 50 ft, 7900           | 1    |
| 33a  | 116192 | WASHER, thrust                                | 1    | 402  | 164672 | ADAPTER, 7900                                  | 1    |
| 33b  | 194173 | WASHER  | 1    |      | 162485 | ADAPTER, 7900HD                                |      |
| 34   | 116618 | MAGNET  | 1    | 403  | 241735 | HOSE, coupled, 1/4 in. x 3 ft mx, 7900HD       | 1    |
| 35   | 112395 | SCREW, cap, flng hd                           | 1    | 404  | 159841 | BUSHING, 7250 psi, 3/8 x 1/4 in., 7900HD       | 1    |
| 36   | 102962 | SCREW, cap sch                                | 4    | 405  | 189018 | SWIVEL   | 1    |
| 37   | 104008 | WASHER, lock, spring                          | 4    | ▲    | 16Y631 | LABEL, warning                                 | 1    |
| 38   | 15C753 | SCREW, mach, hex wash hd                      | 6    | ▲    | 16Y632 | LABEL, warning                                 | 1    |
| 39   | 119562 | SWITCH, reed w/connector                      | 1    | ▲    | 16Y633 | LABEL, warning                                 | 1    |
| 40   | 24V089 | HOUSING, bearing, 7900                        | 1    |      |        |  |      |
| 41▲  | 15F638 | LABEL, GMAX warning fire & skin               | 1    |      |        |  |      |
| 43   | 24V086 | ROD, connecting, 7900                         | 1    |      |        |  |      |
| 44   | 16Y749 | COVER, front, 7900, includes 45               | 1    |      |        |  |      |
| 45   | 118444 | SCREW, mach, slot hex wash hd                 | 5    |      |        |  |      |
| 47   | 16X426 | PUMP, displacement, 7900, includes 86, 89, 90 | 1    |      |        |  |      |
|      | 16X427 | PUMP, displacement, 7900HD, includes 86       |      |      |        |  |      |
| 63   | 112600 | WASHER, lock, spring                          | 4    |      |        |  |      |
| 64   | 112599 | SCREW, cap, socket head                       | 4    |      |        |  |      |
| 68   | 244240 | HOSE, coupled, includes 69                    | 1    |      |        |  |      |
| 69   | 241920 | DEFLECTOR, threaded                           | 1    |      |        |  |      |
| 70   | 16X821 | BOX, control                                  | 1    |      |        |  |      |
| 75   | 16X981 | LABEL, ProConnect                             | 1    |      |        |  |      |
| 76   | 114678 | BUSHING, strain relief                        | 1    |      |        |  |      |
| 79   | 16X203 | CLIP, drain line                              | 1    |      |        |  |      |
| 81   | 288420 | GUN, contractor, RAC X, packaged, 7900        | 1    |      |        |  |      |
|      | 241705 | GUN, spray, texture, 7900HD                   | 1    |      |        |  |      |
| 82   | 189920 | STRAINER, (1-11 1/2 NPSM)                     | 1    |      |        |  |      |
| 86   |        | FITTING, pump                                 | 1    |      |        |  |      |
|      | 16Y579 | 7900  | 1    |      |        |  |      |
|      | 16X835 | TexSpray 7900HD                               | 1    |      |        |  |      |
| 87   |        | HOSE, coupled                                 | 1    |      |        |  |      |
|      | 16X904 | 7900  | 1    |      |        |  |      |
|      | 16X905 | TexSpray 7900HD                               | 1    |      |        |  |      |
| 89   | 248215 | TUBE, intake, includes 90                     | 1    |      |        |  |      |
| 90   | 118494 | PACKING, o-ring, 7900                         | 1    |      |        |  |      |
| 93   | 287253 | TOOL BOX, includes 94                         | 1    |      |        |  |      |
| 94   | 118852 | SCREW, thd forming, hex washer HD             | 3    |      |        |  |      |
| 100  | 125926 | FITTING, 90 deg                               | 1    |      |        |  |      |

▲ Replacement Danger and Warning Labels, Tags and Cards are available at no cost.

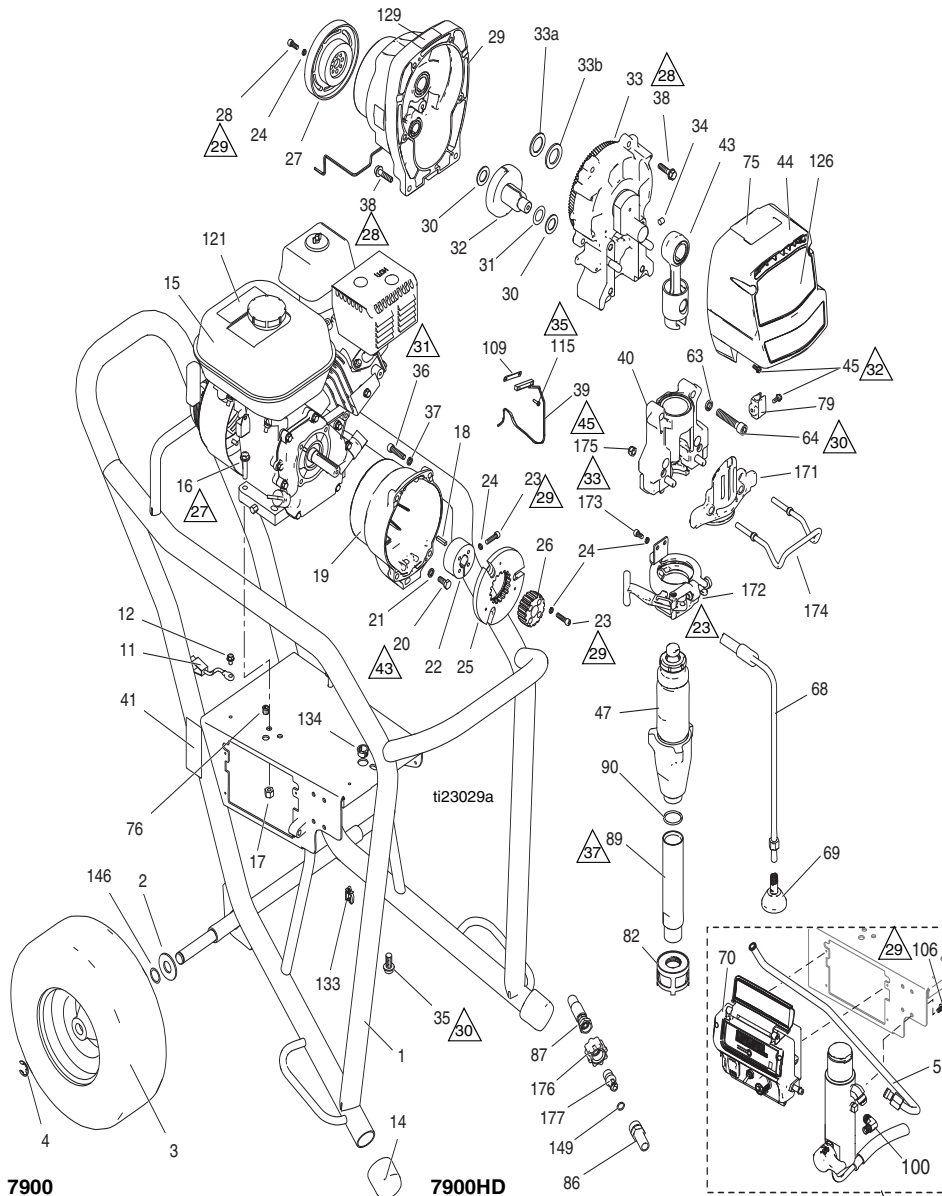
† Included in Clutch Replacement Kit 241113.

**Part Specifications:**

| Ref. | Instruction  |
|------|--|
| ▲12  | Inflate tires to 28-32 psi (1.93-2.21 bar/0.193-0.221 MPa)   |
| ▲23  | Torque clamp adjustment bolt to 140-160 in-lb (15.8-18.1 N•m) with reference 47 installed and ProConnect in locked position. |
| ▲24  | Torque to 38-42 ft-lb (51.5-56.9 N•m)  |
| ▲25  | Torque to 120-130 in-lb (13.4-14.7 N•m)  |
| ▲26  | Torque to 40-45 in-lb (4.5-5.1 N•m)  |
| ▲27  | Torque to 17-23 ft-lb (23.1-31.2 N•m)  |
| ▲28  | Torque to 190-210 in-lb (21.5-23.7 N•m)  |
| ▲29  | Torque to 115-135 in-lb (12.9-15.3 N•m)  |
| ▲30  | Torque to 23-29 ft-lb (31.2-39.2 N•m)  |
| ▲31  | Torque to 130-150 in-lb (14.7-16.9 N•m)  |
| ▲32  | Torque to 30-45 in-lb (3.4-5.1 N•m)  |
| ▲33  | Torque to 90-110 in-lb (10.2-12.4 N•m)   |
| ▲35  | Torque to 8-12 in-lb (0.9-1.4 N•m)   |
| ▲37  | Torque to 70-90 in-lb (7.9-10.2 N•m)   |
| ▲39  | Torque to 170-190 in-lb (19.2-21.5 N•m)  |
| ▲45  | Torque to 200-230 in-lb (22.6-25.9 N•m)  |

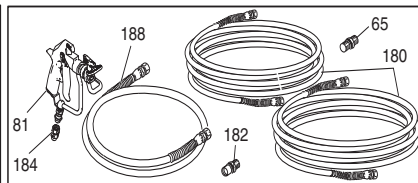
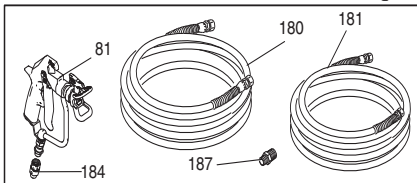
GMAX II 7900/TexSpray 7900 IronMan

# GMAX II 7900/TexSpray 7900 IronMan



7900

7900HD



See pages 35 and 40.

GMAX II 7900/TexSpray 7900 IronMan

## Parts List - GMAX II 7900/TexSpray 7900HD IronMan

| Ref. | Part   | Description  | Qty. | Ref. | Part   | Description                                    | Qty.                                 |   |
|------|--------|--|------|------|--------|--|--------------------------------------|---|
| 1    | 16X778 | FRAME  | 1    | 90   | 118494 | PACKING, o-ring, 7900                          | 1                                    |   |
| 2    | 156306 | WASHER, flat   | 2    | 100  | 125926 | FITTING, 90 deg                                | 1                                    |   |
| 3    | 122267 | WHEEL, foam  | 2    | 106  | 113161 | SCREW, flange, hex hd                          | 3                                    |   |
| 4    | 120211 | CLIP, retaining                                      | 2    | 109  | 15F947 | SHIELD, magnetic                               | 1                                    |   |
| 11   | 237686 | WIRE, ground assembly w/ clamp                       | 1    | 115  | 114528 | SCREW, mach, phillips, pnhd                    | 2                                    |   |
| 12   | 112798 | SCREW, thread forming, hex hd                        | 1    | 121▲ | 194126 | LABEL, warning                                 | 1                                    |   |
| 14   | 15C871 | CAP, leg   | 2    | 126  | 16X350 | LABEL, identification, 7900                    | 1                                    |   |
| 15   | 116080 | ENGINE, gas, 6.5 HP, Honda                           | 1    |      | 16X355 | LABEL, identification, TexSpray 7900           | 1                                    |   |
| 16   | 110837 | SCREW, flange, hex                                   | 2    | 129  | 290228 | LABEL, caution                                 | 1                                    |   |
| 17   | 110838 | NUT, lock  | 2    | 133  | 114687 | CLIP, retainer                                 | 1                                    |   |
| 18   | 183401 | KEY, parallel  | 1    | 134  | 119569 | BUSHING, strain relief                         | 1                                    |   |
| 19   | 15E277 | HOUSING, clutch, mach, 5900/7900                     | 1    | 143  | 15F354 | FUNNEL, oil (not shown)                        | 1                                    |   |
| 20   | 108842 | SCREW, cap, hex hd                                   | 4    | 146  | 116038 | WASHER, wave spring                            | 2                                    |   |
| 21   | 100214 | WASHER, lock   | 4    | 149  |        | O-RING   |                                      |   |
| 22   | 193680 | COLLAR, shaft  | 1    |      | 107505 | 7900   | 1                                    |   |
| 23†  | 108803 | SCREW, hex, socket head                              | 6    |      | 102982 | TexSpray 7900HD                                | 1                                    |   |
| 24†  | 105510 | WASHER, lock, spring                                 | 12   | 171  | 16X209 | PLATE, front, ProConnect II                    | 1                                    |   |
| 25†  |        | ARMATURE, clutch, 5 in.                              | 1    | 172  | 16X324 | CLAMP, pump, large                             | 1                                    |   |
| 26†  |        | HUB, armature  | 1    | 173  | 101550 | SCREW, cap, sch                                | 2                                    |   |
| 27†  |        | ROTOR, clutch, 5 in.                                 | 1    | 174  | 16C457 | HANGER, pail                                   | 1                                    |   |
| 28†  | 101682 | SCREW, cap, sch                                      | 4    | 175  | 112746 | NUT, lock, nylon, thin pattern                 | 2                                    |   |
| 29   | 287466 | HOUSING, pinion, 7900                                | 1    | 176  | 120583 | NUT, hand, 7900 only                           | 1                                    |   |
| 30   | 114672 | WASHER, thrust                                       | 2    | 177  | 16X833 | FITTING, quick disconnect, 3/8 npsm, 7900 only | 1                                    |   |
| 31   | 114699 | WASHER, thrust                                       | 1    |      | 180    | 240797   | HOSE, coupled, 3/8 in. x 50 ft, 7900 | 1 |
| 32   | 287459 | GEAR, combination, 7900                              | 1    |      | 240797 | HOSE, coupled, 3/8 in. x 50 ft, 7900HD         | 2                                    |   |
| 33   | 287470 | HOUSING, drive, 7900, <i>includes 33a, 33b</i>       | 1    | 181  | 240794 | HOSE, coupled, 1/4 in. x 50 ft                 | 1                                    |   |
| 33a  | 116192 | WASHER, thrust                                       | 1    | 182  | 159841 | BUSHING, 7250 psi, 3/8 in. x 1/4 in.           | 1                                    |   |
| 33b  | 194173 | WASHER   | 1    |      | 184    | 189018   | SWIVEL, assembly                     | 1 |
| 34   | 116618 | MAGNET   | 1    | 187  | 164672 | ADAPTER  | 1                                    |   |
| 35   | 112395 | SCREW, cap, flng hd                                  | 1    | 188  | 241735 | HOSE, cpld, 1/4 in. x 3 ft                     | 1                                    |   |
| 36   | 102962 | SCREW, cap sch                                       | 4    | ▲    | 16Y631 | LABEL, warning                                 | 1                                    |   |
| 37   | 104008 | WASHER, lock, spring                                 | 4    | ▲    | 16Y632 | LABEL, warning                                 | 1                                    |   |
| 38   | 15C753 | SCREW, mach, hex wash hd                             | 6    | ▲    | 16Y633 | LABEL, warning                                 | 1                                    |   |
| 39   | 119562 | SWITCH, reed w/connector                             | 1    |      |        |  |                                      |   |
| 40   | 24V089 | HOUSING, bearing, 7900                               | 1    |      |        |  |                                      |   |
| 41▲  | 15F638 | LABEL, GMAX warning fire & skin                      | 1    |      |        |  |                                      |   |
| 43   | 24V086 | ROD, connecting, 7900                                | 1    |      |        |  |                                      |   |
| 44   | 16Y749 | COVER, front, 7900, <i>includes 45</i>               | 1    |      |        |  |                                      |   |
| 45   | 118444 | SCREW, mach, slot hex wash hd                        | 5    |      |        |  |                                      |   |
| 47   | 16X426 | PUMP, displacement, 7900, <i>includes 86, 89, 90</i> | 1    |      |        |  |                                      |   |
|      | 16X427 | PUMP, displacement, 7900HD, <i>includes 86</i>       |      |      |        |  |                                      |   |
| 63   | 112600 | WASHER, lock, spring                                 | 4    |      |        |  |                                      |   |
| 64   | 112599 | SCREW, cap, socket head                              | 4    |      |        |  |                                      |   |
| 65   | 162485 | ADAPTER, nipple (7900HD)                             | 1    |      |        |  |                                      |   |
| 68   | 244240 | HOSE, coupled, <i>includes 69</i>                    | 1    |      |        |  |                                      |   |
| 69   | 241920 | DEFLECTOR, threaded                                  | 1    |      |        |  |                                      |   |
| 70   | 16X821 | BOX, control   | 1    |      |        |  |                                      |   |
| 75   | 16X982 | LABEL, IronMan series                                | 1    |      |        |  |                                      |   |
| 76   | 114678 | BUSHING, strain relief                               | 1    |      |        |  |                                      |   |
| 79   | 16X203 | CLIP, drain line                                     | 1    |      |        |  |                                      |   |
| 81   | 24A139 | GUN, silver, RAC X, packaged, 7900                   | 1    |      |        |  |                                      |   |
|      | 241705 | GUN, spray, texture, 7900HD                          | 1    |      |        |  |                                      |   |
| 82   | 15V573 | STRAINER, (1-11 1/2 NPSM)                            | 1    |      |        |  |                                      |   |
| 86   |        | FITTING, pump  |      |      |        |  |                                      |   |
|      | 16Y579 | 7900   | 1    |      |        |  |                                      |   |
|      | 16X835 | TexSpray 7900HD                                      | 1    |      |        |  |                                      |   |
| 87   |        | HOSE, coupled  |      |      |        |  |                                      |   |
|      | 16X904 | 7900   | 1    |      |        |  |                                      |   |
|      | 16X905 | TexSpray 7900HD                                      | 1    |      |        |  |                                      |   |
| 89   | 248215 | TUBE, intake, <i>includes 90</i>                     | 1    |      |        |  |                                      |   |

▲ Replacement Danger and Warning Labels, Tags and Cards are available at no cost.  
† Included in Clutch Replacement Kit 241113.

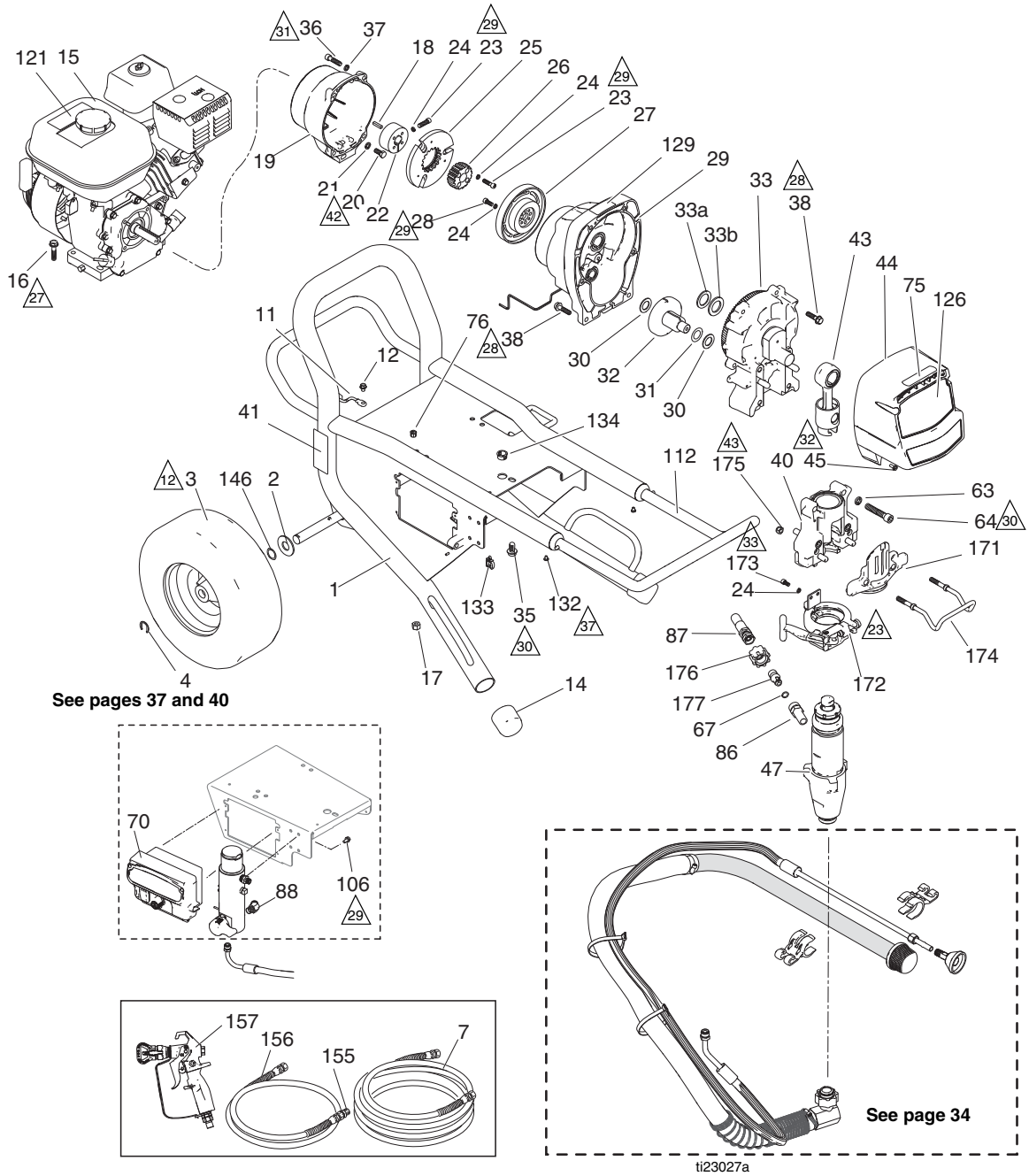
### Part Specifications:

| Ref. | Instruction  |
|------|--|
| ▲23  | Torque clamp adjustment bolt to 140-160 in-lb (15.8-18.1 N•m) with reference 47 installed and ProConnect in locked position. |
| ▲27  | Torque to 17-23 ft-lb (23.1-31.2 N•m)  |
| ▲28  | Torque to 190-210 in-lb (21.5-23.7 N•m)  |
| ▲29  | Torque to 115-135 in-lb (12.9-15.3 N•m)  |
| ▲30  | Torque to 23-29 ft-lb (31.2-39.3 N•m)  |
| ▲31  | Torque to 130-150 in-lb (14.7-16.9 N•m)  |
| ▲32  | Torque to 30-45 in-lb (3.4-5.1 N•m)  |
| ▲33  | Torque to 90-110 in-lb (10.2-12.4 N•m)   |
| ▲35  | Torque to 8-12 in-lb (0.9-1.4 N•m)   |
| ▲37  | Torque to 70-90 in-lb (7.9-10.2 N•m)   |
| ▲43  | Torque to 170-190 in-lb (19.2-21.5 N•m)  |
| ▲45  | Torque to 200-230 in-lb (22.5-25.9 N•m)  |



GMAX II 7900 Lo-Boy

# GMAX II 7900 Lo-Boy



GMAX II 7900 Lo-Boy

### Parts List - GMAX II 7900/Lo-Boy

| Ref. | Part   | Description  | Qty. | Ref.   | Part   | Description                             | Qty. |      |             |     |  |     |  |     |                                       |     |   |     |   |     |                                       |     |   |     |                                     |     |  |     |                                     |     |   |     |   |
|------|--|--|------|--|--------|---|------|------|-------------|-----|--|-----|--|-----|---------------------------------------|-----|---|-----|---|-----|---------------------------------------|-----|---|-----|-------------------------------------|-----|--|-----|-------------------------------------|-----|---|-----|---|
| 1    | 16Y519   | FRAME  | 1    | 106  | 113161 | SCREW, flange, hex hd                   | 3    |      |             |     |  |     |  |     |                                       |     |   |     |   |     |                                       |     |   |     |                                     |     |  |     |                                     |     |   |     |   |
| 2    | 156306   | WASHER, flat   | 2    | 112  | 16Y780 | HANDLE, cart                            | 1    |      |             |     |  |     |  |     |                                       |     |   |     |   |     |                                       |     |   |     |                                     |     |  |     |                                     |     |   |     |   |
| 3    | 119509   | WHEEL, pneumatic                                     | 2    | 121▲   | 194126 | LABEL, warning                          | 1    |      |             |     |  |     |  |     |                                       |     |   |     |   |     |                                       |     |   |     |                                     |     |  |     |                                     |     |   |     |   |
| 4    | 15E891   | CLIP, retaining                                      | 2    | 126  | 16X350 | LABEL, identification                   | 1    |      |             |     |  |     |  |     |                                       |     |   |     |   |     |                                       |     |   |     |                                     |     |  |     |                                     |     |   |     |   |
| 7    | 240797   | HOSE, coupled, 3/8 in. x 50 ft                       | 1    | 129  | 290228 | LABEL, caution                          | 1    |      |             |     |  |     |  |     |                                       |     |   |     |   |     |                                       |     |   |     |                                     |     |  |     |                                     |     |   |     |   |
| 11   | 237686   | WIRE, ground assembly w/ clamp                       | 1    | 132  | 109032 | SCREW, mach, pnh                        | 4    |      |             |     |  |     |  |     |                                       |     |   |     |   |     |                                       |     |   |     |                                     |     |  |     |                                     |     |   |     |   |
| 12   | 112798   | SCREW, thread forming, hex hd                        | 1    | 133  | 114687 | CLIP, retainer                          | 1    |      |             |     |  |     |  |     |                                       |     |   |     |   |     |                                       |     |   |     |                                     |     |  |     |                                     |     |   |     |   |
| 14   | 276974   | CAP, leg   | 2    | 134  | 119569 | BUSHING, strain relief                  | 1    |      |             |     |  |     |  |     |                                       |     |   |     |   |     |                                       |     |   |     |                                     |     |  |     |                                     |     |   |     |   |
| 15   | 116080   | ENGINE, gas, 6.5 HP, Honda                           | 1    | 146  | 116038 | WASHER, wave spring                     | 2    |      |             |     |  |     |  |     |                                       |     |   |     |   |     |                                       |     |   |     |                                     |     |  |     |                                     |     |   |     |   |
| 16   | 110837   | SCREW, flange, hex                                   | 2    | 155  | 159841 | BUSHING, 7250 psi,<br>3/8 in. x 1/4 in. | 1    |      |             |     |  |     |  |     |                                       |     |   |     |   |     |                                       |     |   |     |                                     |     |  |     |                                     |     |   |     |   |
| 17   | 110838   | NUT, lock  | 2    | 156  | 241735 | HOSE, cpld, 1/4 in. x 3 ft              | 1    |      |             |     |  |     |  |     |                                       |     |   |     |   |     |                                       |     |   |     |                                     |     |  |     |                                     |     |   |     |   |
| 18   | 183401   | KEY, parallel  | 1    | 157  | 288420 | GUN, contractor, RAC X,<br>packaged     | 1    |      |             |     |  |     |  |     |                                       |     |   |     |   |     |                                       |     |   |     |                                     |     |  |     |                                     |     |   |     |   |
| 19   | 15E277   | HOUSING, clutch, 5900/7900                           | 1    | 171  | 16X209 | PLATE, front, ProConnect II,<br>7900    | 1    |      |             |     |  |     |  |     |                                       |     |   |     |   |     |                                       |     |   |     |                                     |     |  |     |                                     |     |   |     |   |
| 20   | 108842   | SCREW, cap, hex hd                                   | 4    | 172  | 16X324 | CLAMP, pump, large                      | 1    |      |             |     |  |     |  |     |                                       |     |   |     |   |     |                                       |     |   |     |                                     |     |  |     |                                     |     |   |     |   |
| 21   | 100214   | WASHER, lock   | 4    | 173  | 101550 | SCREW, cap, sch                         | 2    |      |             |     |  |     |  |     |                                       |     |   |     |   |     |                                       |     |   |     |                                     |     |  |     |                                     |     |   |     |   |
| 22   | 193680   | COLLAR, shaft  | 1    | 174  | 16C457 | HANGER, pail                            | 1    |      |             |     |  |     |  |     |                                       |     |   |     |   |     |                                       |     |   |     |                                     |     |  |     |                                     |     |   |     |   |
| 23†  | 108803   | SCREW, hex, socket head                              | 6    | 175  | 112746 | NUT, lock, nylon, thin pattern          | 2    |      |             |     |  |     |  |     |                                       |     |   |     |   |     |                                       |     |   |     |                                     |     |  |     |                                     |     |   |     |   |
| 24†  | 105510   | WASHER, lock, spring                                 | 12   | 176  | 120583 | NUT, hand                               | 1    |      |             |     |  |     |  |     |                                       |     |   |     |   |     |                                       |     |   |     |                                     |     |  |     |                                     |     |   |     |   |
| 25†  |  | ARMATURE, clutch, 5 in.                              | 1    | 177  | 16X833 | FITTING, quick disconnect,<br>3/8 npsm  | 1    |      |             |     |  |     |  |     |                                       |     |   |     |   |     |                                       |     |   |     |                                     |     |  |     |                                     |     |   |     |   |
| 26†  |  | HUB, armature  | 1    | ▲  | 16Y631 | LABEL, warning                          | 1    |      |             |     |  |     |  |     |                                       |     |   |     |   |     |                                       |     |   |     |                                     |     |  |     |                                     |     |   |     |   |
| 27†  |  | ROTOR, clutch, 5 in.                                 | 1    | ▲  | 16Y632 | LABEL, warning                          | 1    |      |             |     |  |     |  |     |                                       |     |   |     |   |     |                                       |     |   |     |                                     |     |  |     |                                     |     |   |     |   |
| 28†  | 101682   | SCREW, cap, sch                                      | 4    | ▲  | 16Y633 | LABEL, warning                          | 1    |      |             |     |  |     |  |     |                                       |     |   |     |   |     |                                       |     |   |     |                                     |     |  |     |                                     |     |   |     |   |
| 29   | 287466   | HOUSING, pinion, 7900                                | 1    | ▲ Replacement Danger and Warning Labels, Tags and Cards are available at no cost.  |        |   |      |      |             |     |  |     |  |     |                                       |     |   |     |   |     |                                       |     |   |     |                                     |     |  |     |                                     |     |   |     |   |
| 30   | 114672   | WASHER, thrust                                       | 2    | † Included in Clutch Replacement Kit 241113.   |        |   |      |      |             |     |  |     |  |     |                                       |     |   |     |   |     |                                       |     |   |     |                                     |     |  |     |                                     |     |   |     |   |
| 31   | 114699   | WASHER, thrust                                       | 1    | Suction Kit 16Y760 Kit is available  |        |   |      |      |             |     |  |     |  |     |                                       |     |   |     |   |     |                                       |     |   |     |                                     |     |  |     |                                     |     |   |     |   |
| 32   | 287459   | GEAR, combination, 7900                              | 1    | <b>Part Specifications:</b>  |        |   |      |      |             |     |  |     |  |     |                                       |     |   |     |   |     |                                       |     |   |     |                                     |     |  |     |                                     |     |   |     |   |
| 33   | 287470   | HOUSING, drive, 7900, <i>includes 33a, 33b</i>       | 1    | <table border="1"> <thead> <tr> <th>Ref.</th> <th>Instruction</th> </tr> </thead> <tbody> <tr> <td>▲12</td> <td>Inflate tires to 28-32 psi (1.93-2.21 bar/0.193-0.221 MPa)</td> </tr> <tr> <td>▲23</td> <td>Torque clamp adjustment bolt to 140-160 in-lb (15.8-18.1 N•m) with reference 47 installed and ProConnect in locked position.</td> </tr> <tr> <td>▲27</td> <td>Torque to 17-23 ft-lb (23.1-31.2 N•m)</td> </tr> <tr> <td>▲28</td> <td>Torque to 190-210 in-lb (21.5-23.7 N•m)</td> </tr> <tr> <td>▲29</td> <td>Torque to 115-135 in-lb (12.9-15.3 N•m)</td> </tr> <tr> <td>▲30</td> <td>Torque to 23-29 ft-lb (31.2-39.3 N•m)</td> </tr> <tr> <td>▲31</td> <td>Torque to 130-150 in-lb (14.7-16.9 N•m)</td> </tr> <tr> <td>▲32</td> <td>Torque to 30-45 in-lb (3.4-5.1 N•m)</td> </tr> <tr> <td>▲33</td> <td>Torque to 90-110 in-lb (10.2-12.4 N•m)</td> </tr> <tr> <td>▲37</td> <td>Torque to 25-35 in-lb (2.8-3.9 N•m)</td> </tr> <tr> <td>▲42</td> <td>Torque to 170-190 in-lb (19.2-25.9 N•m)</td> </tr> <tr> <td>▲43</td> <td>Torque to 200-230 in-lb (22.5-25.9 N•m)</td> </tr> </tbody> </table> |        |   |      | Ref. | Instruction | ▲12 | Inflate tires to 28-32 psi (1.93-2.21 bar/0.193-0.221 MPa) | ▲23 | Torque clamp adjustment bolt to 140-160 in-lb (15.8-18.1 N•m) with reference 47 installed and ProConnect in locked position. | ▲27 | Torque to 17-23 ft-lb (23.1-31.2 N•m) | ▲28 | Torque to 190-210 in-lb (21.5-23.7 N•m) | ▲29 | Torque to 115-135 in-lb (12.9-15.3 N•m) | ▲30 | Torque to 23-29 ft-lb (31.2-39.3 N•m) | ▲31 | Torque to 130-150 in-lb (14.7-16.9 N•m) | ▲32 | Torque to 30-45 in-lb (3.4-5.1 N•m) | ▲33 | Torque to 90-110 in-lb (10.2-12.4 N•m) | ▲37 | Torque to 25-35 in-lb (2.8-3.9 N•m) | ▲42 | Torque to 170-190 in-lb (19.2-25.9 N•m) | ▲43 | Torque to 200-230 in-lb (22.5-25.9 N•m) |
| Ref. | Instruction  |  |      |  |        |   |      |      |             |     |  |     |  |     |                                       |     |   |     |   |     |                                       |     |   |     |                                     |     |  |     |                                     |     |   |     |   |
| ▲12  | Inflate tires to 28-32 psi (1.93-2.21 bar/0.193-0.221 MPa)   |  |      |  |        |   |      |      |             |     |  |     |  |     |                                       |     |   |     |   |     |                                       |     |   |     |                                     |     |  |     |                                     |     |   |     |   |
| ▲23  | Torque clamp adjustment bolt to 140-160 in-lb (15.8-18.1 N•m) with reference 47 installed and ProConnect in locked position. |  |      |  |        |   |      |      |             |     |  |     |  |     |                                       |     |   |     |   |     |                                       |     |   |     |                                     |     |  |     |                                     |     |   |     |   |
| ▲27  | Torque to 17-23 ft-lb (23.1-31.2 N•m)  |  |      |  |        |   |      |      |             |     |  |     |  |     |                                       |     |   |     |   |     |                                       |     |   |     |                                     |     |  |     |                                     |     |   |     |   |
| ▲28  | Torque to 190-210 in-lb (21.5-23.7 N•m)  |  |      |  |        |   |      |      |             |     |  |     |  |     |                                       |     |   |     |   |     |                                       |     |   |     |                                     |     |  |     |                                     |     |   |     |   |
| ▲29  | Torque to 115-135 in-lb (12.9-15.3 N•m)  |  |      |  |        |   |      |      |             |     |  |     |  |     |                                       |     |   |     |   |     |                                       |     |   |     |                                     |     |  |     |                                     |     |   |     |   |
| ▲30  | Torque to 23-29 ft-lb (31.2-39.3 N•m)  |  |      |  |        |   |      |      |             |     |  |     |  |     |                                       |     |   |     |   |     |                                       |     |   |     |                                     |     |  |     |                                     |     |   |     |   |
| ▲31  | Torque to 130-150 in-lb (14.7-16.9 N•m)  |  |      |  |        |   |      |      |             |     |  |     |  |     |                                       |     |   |     |   |     |                                       |     |   |     |                                     |     |  |     |                                     |     |   |     |   |
| ▲32  | Torque to 30-45 in-lb (3.4-5.1 N•m)  |  |      |  |        |   |      |      |             |     |  |     |  |     |                                       |     |   |     |   |     |                                       |     |   |     |                                     |     |  |     |                                     |     |   |     |   |
| ▲33  | Torque to 90-110 in-lb (10.2-12.4 N•m)   |  |      |  |        |   |      |      |             |     |  |     |  |     |                                       |     |   |     |   |     |                                       |     |   |     |                                     |     |  |     |                                     |     |   |     |   |
| ▲37  | Torque to 25-35 in-lb (2.8-3.9 N•m)  |  |      |  |        |   |      |      |             |     |  |     |  |     |                                       |     |   |     |   |     |                                       |     |   |     |                                     |     |  |     |                                     |     |   |     |   |
| ▲42  | Torque to 170-190 in-lb (19.2-25.9 N•m)  |  |      |  |        |   |      |      |             |     |  |     |  |     |                                       |     |   |     |   |     |                                       |     |   |     |                                     |     |  |     |                                     |     |   |     |   |
| ▲43  | Torque to 200-230 in-lb (22.5-25.9 N•m)  |  |      |  |        |   |      |      |             |     |  |     |  |     |                                       |     |   |     |   |     |                                       |     |   |     |                                     |     |  |     |                                     |     |   |     |   |
| 33a  | 116192   | WASHER, thrust                                       | 1    |  |        |   |      |      |             |     |  |     |  |     |                                       |     |   |     |   |     |                                       |     |   |     |                                     |     |  |     |                                     |     |   |     |   |
| 33b  | 194173   | WASHER   | 1    |  |        |   |      |      |             |     |  |     |  |     |                                       |     |   |     |   |     |                                       |     |   |     |                                     |     |  |     |                                     |     |   |     |   |
| 35   | 112395   | SCREW, cap, flng hd                                  | 1    |  |        |   |      |      |             |     |  |     |  |     |                                       |     |   |     |   |     |                                       |     |   |     |                                     |     |  |     |                                     |     |   |     |   |
| 36   | 102962   | SCREW, cap sch                                       | 4    |  |        |   |      |      |             |     |  |     |  |     |                                       |     |   |     |   |     |                                       |     |   |     |                                     |     |  |     |                                     |     |   |     |   |
| 37   | 104008   | WASHER, lock, spring                                 | 4    |  |        |   |      |      |             |     |  |     |  |     |                                       |     |   |     |   |     |                                       |     |   |     |                                     |     |  |     |                                     |     |   |     |   |
| 38   | 15C753   | SCREW, mach, hex wash hd                             | 6    |  |        |   |      |      |             |     |  |     |  |     |                                       |     |   |     |   |     |                                       |     |   |     |                                     |     |  |     |                                     |     |   |     |   |
| 40   | 24V089   | HOUSING, bearing                                     | 1    |  |        |   |      |      |             |     |  |     |  |     |                                       |     |   |     |   |     |                                       |     |   |     |                                     |     |  |     |                                     |     |   |     |   |
| 41▲  | 15F638   | LABEL, GMAX warning fire & skin                      | 1    |  |        |   |      |      |             |     |  |     |  |     |                                       |     |   |     |   |     |                                       |     |   |     |                                     |     |  |     |                                     |     |   |     |   |
| 43   | 24V086   | ROD, connecting, 7900                                | 1    |  |        |   |      |      |             |     |  |     |  |     |                                       |     |   |     |   |     |                                       |     |   |     |                                     |     |  |     |                                     |     |   |     |   |
| 44   | 16Y749   | COVER, front, 7900, <i>includes 45</i>               | 1    |  |        |   |      |      |             |     |  |     |  |     |                                       |     |   |     |   |     |                                       |     |   |     |                                     |     |  |     |                                     |     |   |     |   |
| 45   | 118444   | SCREW, mach, slot hex wash hd                        | 4    |  |        |   |      |      |             |     |  |     |  |     |                                       |     |   |     |   |     |                                       |     |   |     |                                     |     |  |     |                                     |     |   |     |   |
| 47   | 16X426   | PUMP, displacement, 7900, <i>includes 86, 89, 90</i> | 1    |  |        |   |      |      |             |     |  |     |  |     |                                       |     |   |     |   |     |                                       |     |   |     |                                     |     |  |     |                                     |     |   |     |   |
| 63   | 112600   | WASHER, lock, spring                                 | 4    |  |        |   |      |      |             |     |  |     |  |     |                                       |     |   |     |   |     |                                       |     |   |     |                                     |     |  |     |                                     |     |   |     |   |
| 64   | 112599   | SCREW, cap, socket head                              | 4    |  |        |   |      |      |             |     |  |     |  |     |                                       |     |   |     |   |     |                                       |     |   |     |                                     |     |  |     |                                     |     |   |     |   |
| 67   | 107505   | O-RING   | 1    |  |        |   |      |      |             |     |  |     |  |     |                                       |     |   |     |   |     |                                       |     |   |     |                                     |     |  |     |                                     |     |   |     |   |
| 70   | 16X822   | BOX, control   | 1    |  |        |   |      |      |             |     |  |     |  |     |                                       |     |   |     |   |     |                                       |     |   |     |                                     |     |  |     |                                     |     |   |     |   |
| 75   | 16X979   | LABEL, Proconnect                                    | 1    |  |        |   |      |      |             |     |  |     |  |     |                                       |     |   |     |   |     |                                       |     |   |     |                                     |     |  |     |                                     |     |   |     |   |
| 76   | 114678   | BUSHING, strain relief                               | 1    |  |        |   |      |      |             |     |  |     |  |     |                                       |     |   |     |   |     |                                       |     |   |     |                                     |     |  |     |                                     |     |   |     |   |
| 86   | 16Y579   | FITTING, pump  | 1    |  |        |   |      |      |             |     |  |     |  |     |                                       |     |   |     |   |     |                                       |     |   |     |                                     |     |  |     |                                     |     |   |     |   |
| 87   | 16X950   | HOSE, coupled  | 1    |  |        |   |      |      |             |     |  |     |  |     |                                       |     |   |     |   |     |                                       |     |   |     |                                     |     |  |     |                                     |     |   |     |   |
| 88   | 122533   | FITTING, 45 deg                                      | 1    |  |        |   |      |      |             |     |  |     |  |     |                                       |     |   |     |   |     |                                       |     |   |     |                                     |     |  |     |                                     |     |   |     |   |



LoBoy Suction Set Kits (Kits include suction set and drain hose)

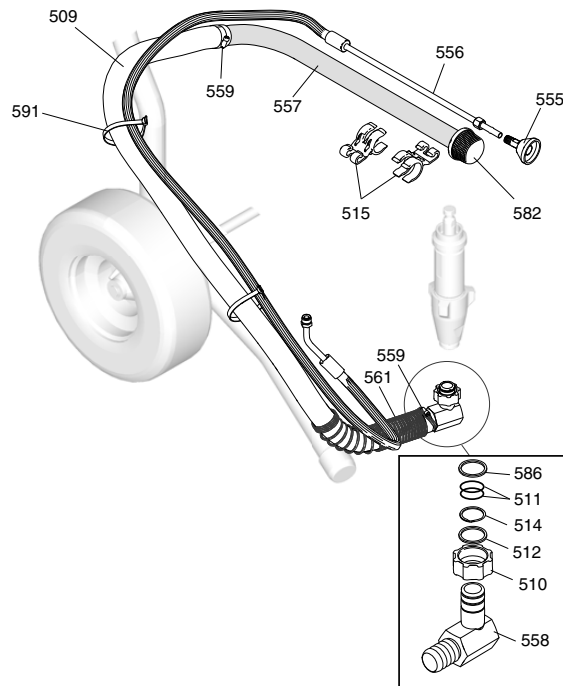
## LoBoy Suction Set Kits

(Kits include suction set and drain hose)

GMAX II 3900/5900 Kit: 16Y759

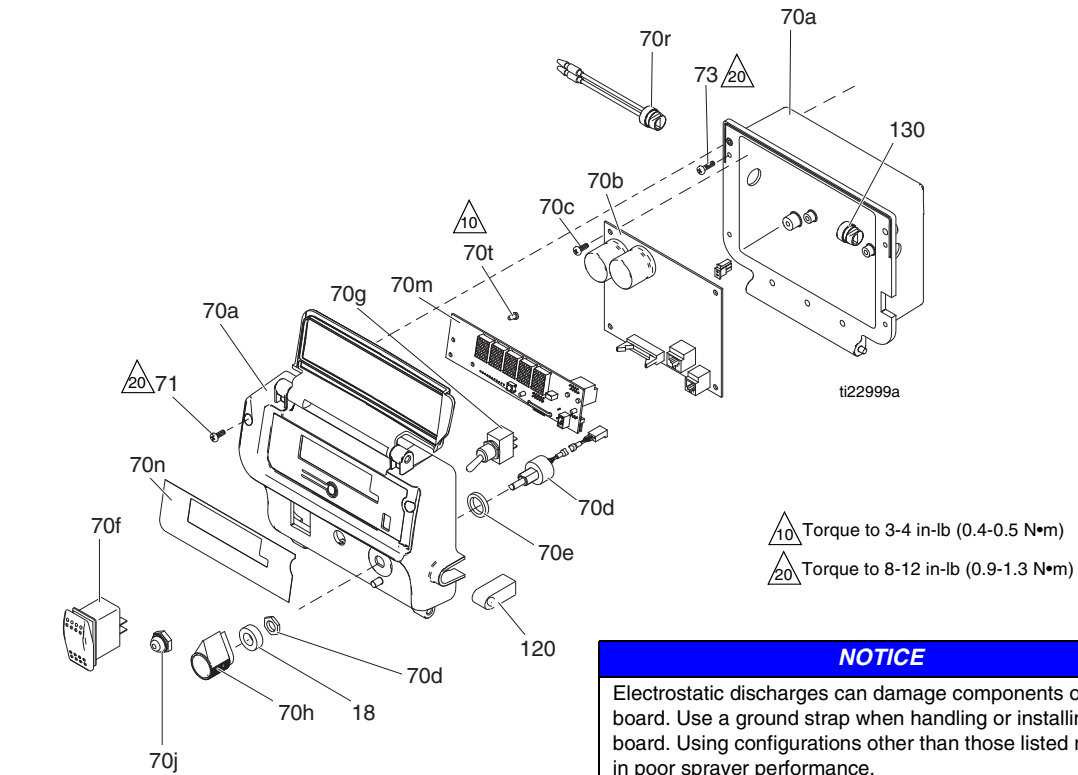
GMAX II 7900 Kit: 16Y760

| Ref. | Part   | Description  | Qty. |
|------|--------|--|------|
| 509  | 24W028 | HOSE, suction 3900/5900, includes 510, 511, 512, 514, 557, 558, 559, 561 | 1    |
|      | 24U917 | HOSE, suction 7900, includes 510, 511, 512, 514, 557, 558, 559, 561      | 1    |
| 510  | 15C980 | NUT, jam   | 1    |
| 511  | 15H854 | O-RING   | 2    |
| 512  | 15C981 | WASHER, suction, swivel  | 1    |
| 514  | 118505 | RING, retaining, external  | 1    |
| 515  | 15D000 | CLIP, drain line   | 2    |
| 555  | 241920 | DEFLECTOR  | 1    |
| 556  |        | HOSE, drain, includes 555  |      |
|      | 288732 | 3900/5900  | 1    |
|      | 246331 | 7900   | 1    |
| 557  |        | TUBE, suction  |      |
|      | 15D157 | 3900/5900  | 1    |
|      | 15F171 | 7900   | 1    |
| 558  | 24A561 | FITTING, elbow, barbed, includes 510, 512, 514                           | 1    |
| 559  | 120330 | CLAMP, hose  | 2    |
| 561  | 176450 | GUARD, hose  | 1    |
| 582  | 189920 | STRAINER, 1-11 1/2 npsm  | 1    |
| 586  |        | Washer   | 1    |
|      | 115099 | 3900/5900  |      |
|      | 119566 | 7900   |      |
| 591  |        | TIE STRAP  | 2    |

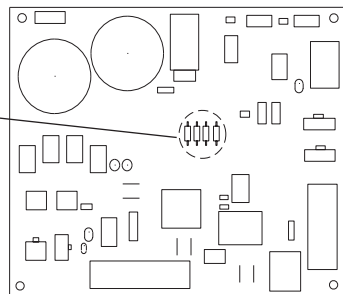
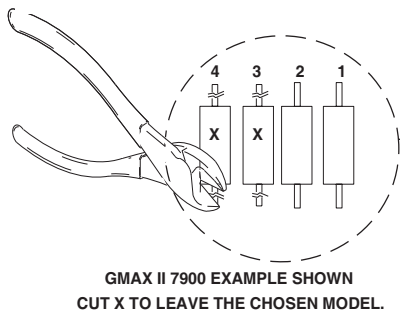


Control Box 16X821

# Control Box 16X821



**NOTICE**  
Electrostatic discharges can damage components on PC board. Use a ground strap when handling or installing PC board. Using configurations other than those listed results in poor sprayer performance.



- 1 Refer to your sprayer repair manual for the procedures.
- 2 Perform **Pressure Relief Procedure**.
- 3 Remove pressure control cover.
- 4 Remove PC board.
- 5 Cut out and remove the resistor(s) on PC board according to figure and table.
- 6 Install PC board.
- 7 Install pressure control cover.

|   | 3900         |                            | 5900                |                                   |                          | 7900                |                                   |
|---|--------------|----------------------------|---------------------|-----------------------------------|--------------------------|---------------------|-----------------------------------|
|   | GMAX II 3900 | International GMAX II 3900 | GMAX II 5900/5900HD | GMAX II 5900/5900HD International | GMAX II 5900 Convertible | GMAX II 7900/7900HD | GMAX II 7900/7900HD International |
| 1 | x            | x                          |                     |                                   |                          |                     | x                                 |
| 2 |              |                            | x                   | x                                 |                          |                     |                                   |
| 3 |              | x                          | x                   |                                   |                          | x                   | x                                 |
| 4 |              |                            |                     | x                                 | x                        | x                   | x                                 |

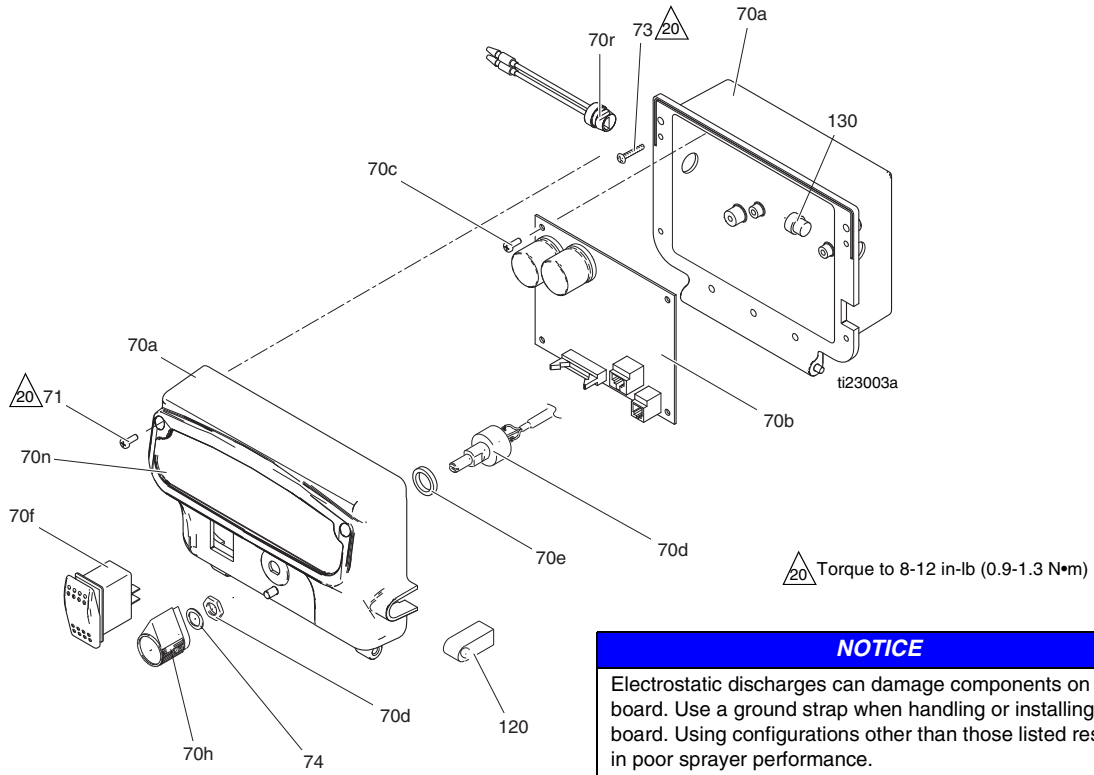
Control Box 16X821

**Parts List - Control Box 16X821**

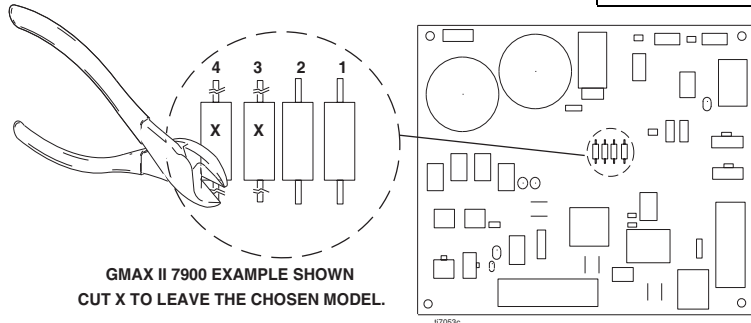
| Ref. | Part   | Description               | Qty. | Ref. | Part   | Description                       | Qty. |
|------|--------|---------------------------|------|------|--------|-----------------------------------|------|
| 18   | 15C973 | GASKET                    | 1    | 70j  | 195428 | BOOT, toggle                      | 1    |
| 70   | 16X821 | CONTROL BOX               |      | 70m  | 16Y496 | KIT, display, <i>includes 70t</i> | 1    |
| 70a  | 24U347 | BOX                       | 1    | 70n  | 16X801 | LABEL, brand                      | 1    |
| 70b  | 17A095 | CONTROL, board            | 1    | 70r  | 119545 | BUSHING, strain, relief           | 1    |
| 70c  | 117317 | SCREW, plastite, pan head | 4    | 70t  | 115522 | SCREW, mach, pnh                  | 3    |
| 70d  | 256219 | POTENTIOMETER             | 1    | 71   | 116585 | SCREW, pan, X recess, sst         | 2    |
| 70f  | 116752 | SWITCH, rocker            | 1    | 73   | 113160 | SCREW, mach, slot, hex            | 4    |
| 70e  | 198650 | SPACER, shaft             | 1    |      |        | wash hd                           |      |
| 70g  | 119541 | SWITCH, toggle            | 1    | 120  | 16Y415 | GASKET, transducer                | 1    |
| 70h  | 116167 | KNOB, potentiometer       | 1    | 130  | 119545 | BUSHING, strain, relief           | 1    |

Control Box 16X822

# Control Box 16X822



**NOTICE**  
Electrostatic discharges can damage components on PC board. Use a ground strap when handling or installing PC board. Using configurations other than those listed results in poor sprayer performance.



- 1 Refer to your sprayer repair manual for the procedures.
- 2 Perform **Pressure Relief Procedure**.
- 3 Remove pressure control cover.
- 4 Remove PC board.
- 5 Cut out and remove the resistor(s) on PC board according to figure and table.
- 6 Install PC board.
- 7 Install pressure control cover.

|   | 3900         |                            | 5900                |                                   |                          | 7900                |                                   |
|---|--------------|----------------------------|---------------------|-----------------------------------|--------------------------|---------------------|-----------------------------------|
|   | GMAX II 3900 | International GMAX II 3900 | GMAX II 5900/5900HD | GMAX II 5900/5900HD International | GMAX II 5900 Convertible | GMAX II 7900/7900HD | GMAX II 7900/7900HD International |
| 1 | x            | x                          |                     |                                   |                          |                     | x                                 |
| 2 |              |                            | x                   | x                                 |                          |                     |                                   |
| 3 |              | x                          | x                   |                                   |                          | x                   | x                                 |
| 4 |              |                            |                     | x                                 | x                        | x                   | x                                 |

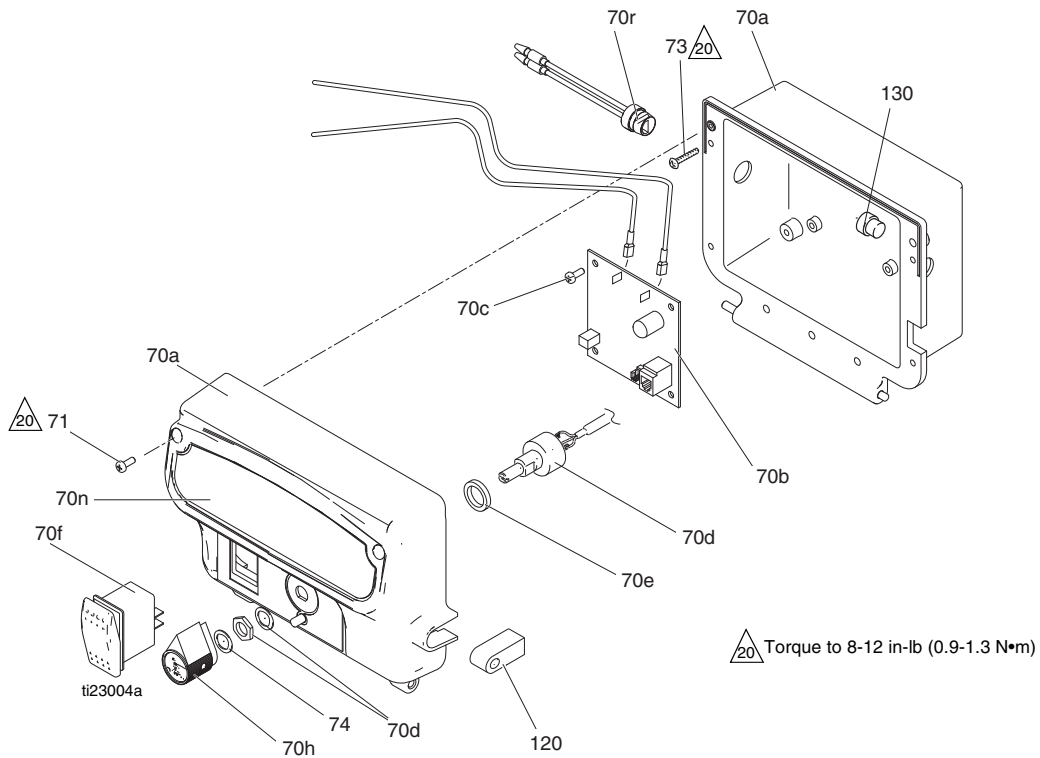
Control Box 16X822

**Parts List - Control Box 16X822**

| Ref. | Part   | Description               | Qty. | Ref. | Part   | Description               | Qty. |
|------|--------|---------------------------|------|------|--------|---------------------------|------|
| 70   | 16X822 | CONTROL BOX               |      | 70r  | 119545 | BUSHING, strain, relief   | 1    |
| 70a  | 24U346 | BOX                       | 1    | 71   | 116585 | SCREW, pan, X recess, sst | 2    |
| 70b  | 17A095 | CONTROL, board            | 1    | 73   | 116585 | SCREW, pan, X recess, sst | 4    |
| 70c  | 117317 | SCREW, plastite, pan head | 4    |      |        | (5900 Convertible)        |      |
| 70d  | 256219 | POTENTIOMETER             | 1    |      | 113160 | SCREW, mach, slot, hex    | 4    |
| 70e  | 198650 | SPACER, shaft             | 1    |      |        | wash hd                   |      |
| 70f  | 116752 | SWITCH, rocker            | 1    | 74   | 15C973 | GASKET                    | 1    |
| 70h  | 116167 | KNOB, potentiometer       | 1    | 120  | 16Y415 | GASKET, transducer        | 1    |
| 70n  | 16Y782 | LABEL, brand              | 1    | 130  | 119545 | BUSHING, strain, relief   | 1    |

Control Box 16X744

## Control Box 16X744



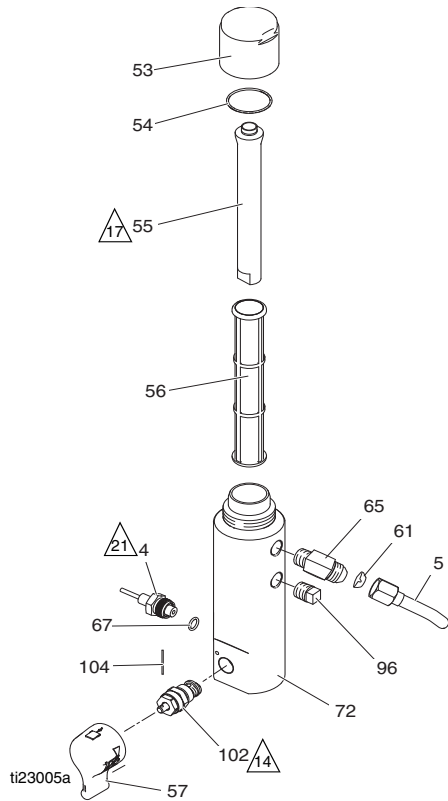
### Parts List - Control Box 16X744

| Ref. | Part   | Description                | Qty. | Ref. | Part   | Description                                     | Qty. |
|------|--------|----------------------------|------|------|--------|---|------|
| 70   | 16X744 | CONTROL BOX, GMAX 3400     |      | 70r  | 119545 | BUSHING, strain, relief                         | 1    |
| 70a  | 24U346 | BOX                        | 1    | 71   | 116585 | SCREW, pan, X recess, sst                       | 2    |
| 70b  | 287486 | KIT, repair, control board | 1    | 73   | 116585 | SCREW, pan, X recess, sst<br>(5900 Convertible) | 4    |
| 70c  | 117317 | SCREW, plastite, pan head  | 4    |      | 113160 | SCREW, mach, slot, hex<br>wash hd               | 4    |
| 70d  | 256219 | POTENTIOMETER              | 1    | 74   | 15C973 | GASKET  | 1    |
| 70e  | 198650 | SPACER, shaft              | 1    | 120  | 16Y415 | GASKET, transducer                              | 1    |
| 70f  | 116752 | SWITCH, rocker             | 1    | 130  | 119545 | BUSHING, strain, relief                         | 1    |
| 70h  | 116167 | KNOB, potentiometer        | 1    |      |        |   |      |
| 70n  | 16Y782 | LABEL, brand               | 1    |      |        |   |      |



Filter

# Filter



## Parts List - Filter

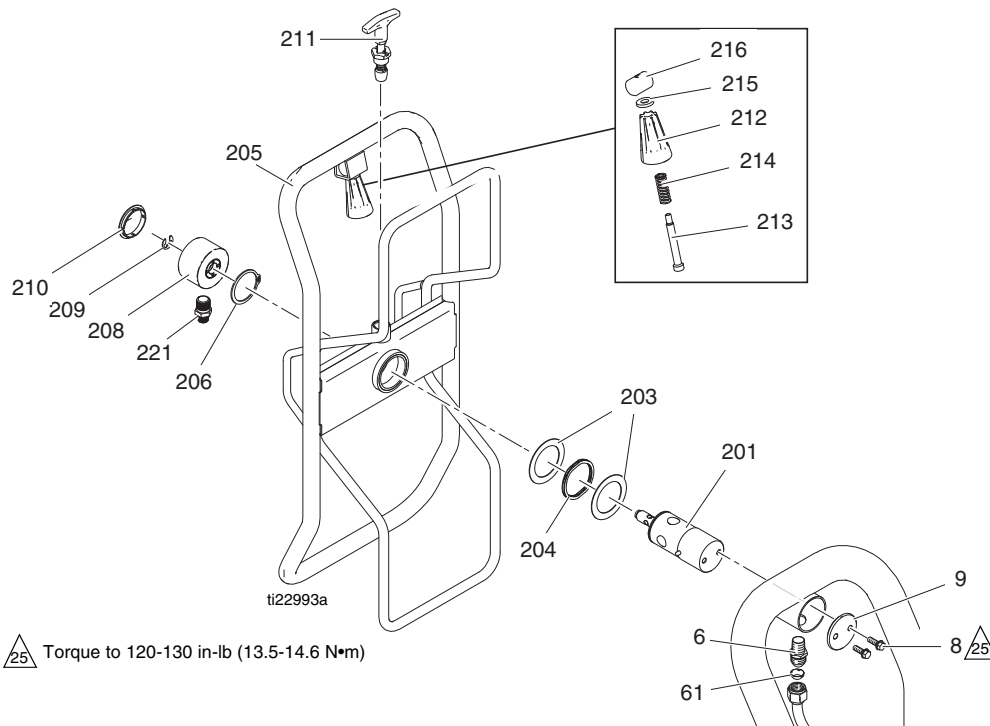
| Ref. | Part   | Description   | Qty. | Ref. | Part   | Description                                       | Qty. |
|------|--------|---|------|------|--------|---|------|
| 4    | 243222 | TRANSDUCER, pressure control<br><i>includes 63</i>                    | 1    | 72   | 15E284 | HOUSING, filter                                   | 1    |
| 5    | 16C381 | TUBE, GMAX 5900/7900<br>(ProContractor)                               | 1    | 96   | 15G331 | PLUG, pipe  | 1    |
|      | 16C384 | TUBE, GMAX 3900 (ProContractor)                                       | 1    | 102  | 257352 | VALVE, prime, heavy duty, <i>includes 57, 104</i> | 1    |
| 53   | 287285 | CAP, filter, <i>includes 54, 55</i>                                   | 1    | 104  | 15C972 | PIN, spring                                       | 1    |
| 54   | 117285 | PACKING, o-ring   | 1    |      |        |   |      |
| 55   | 15C766 | TUBE, diffusion   | 1    |      |        |   |      |
| 56   | 244067 | FILTER, fluid   | 1    |      |        |   |      |
| 57   | 24E234 | KIT, handle 2 position  | 1    |      |        |   |      |
| 61   | 123739 | SEAL, fitting, flared   | 1    |      |        |   |      |
| 65   | 122533 | FITTING, 45 deg elbow (ProConnect)                                    | 1    |      |        |   |      |
|      | 162485 | FITTING, adapter (7900, IronMan)                                      | 1    |      |        |   |      |
|      | 196177 | FITTING, adapter (3900/5900 Standard, Convertible and Lo-Boy)         | 1    |      |        |   |      |
|      | 196178 | FITTING, adapter (5900 IronMan/ 7900 Standard/5900HD/7900HD Standard) | 1    |      |        |   |      |
| 67   | 111457 | PACKING, o-ring   | 1    |      |        |   |      |

### Part Specifications:

| Ref. | Instruction                             |
|------|---|
|      | Torque to 130-150 in-lb (14.6-16.9 N•m) |
|      | Torque to 90-110 in-lb (10.1-12.4 N•m)  |
|      | Torque to 35-45 ft-lb (47.4-61.0 N•m)   |

Hose Reel (ProContractor Sprayers)

## Hose Reel (ProContractor Sprayers)



### Parts List - Hose Reel (ProContractor Sprayers)

| Ref. | Part   | Description                   | Qty. | Ref. | Part   | Description                               | Qty. |
|------|--------|-------------------------------|------|------|--------|---|------|
| 6    | 121311 | FITTING, connector, NPT x JIC | 1    | 209  | 122347 | RING, retaining, external                 | 1    |
| 8    | 260212 | SCREW, hex washer hd          | 2    | 210  | 122787 | CAP                                       | 1    |
| 9    | 16C975 | PLATE, pivot mount            | 1    | 211  | 24E400 | PIN, pop, lock out                        | 1    |
| 61   | 123739 | SEAL, fitting, flared         | 1    | 212  | 278085 | HANDLE, swivel                            | 1    |
| 201  | 24E016 | TUBE, hose reel, pivot        | 1    | 213  | 122518 | SCREW, shoulder, sch                      | 1    |
| 203  | 122607 | WASHER, flat                  | 2    | 214  | 122542 | SPRING, die                               | 1    |
| 204  | 122534 | SPRING, wave                  | 1    | 215  | 122669 | WASHER, flat                              | 1    |
| 205  | 24B691 | REEL, hose                    | 1    | 216  | 15X618 | NUT, swivel, handle                       | 1    |
| 206  | 122524 | RING, retaining, external     | 1    | 221  | 164672 | ADAPTER<br>(3900/5900 ProContractor only) | 1    |
| 208  | 24B248 | CAP, swivel, complete         | 1    |      | 162485 | ADAPTER                                   | 1    |

Pressure Control Wiring Diagrams

**3900/5900/7900 Sprayers**

