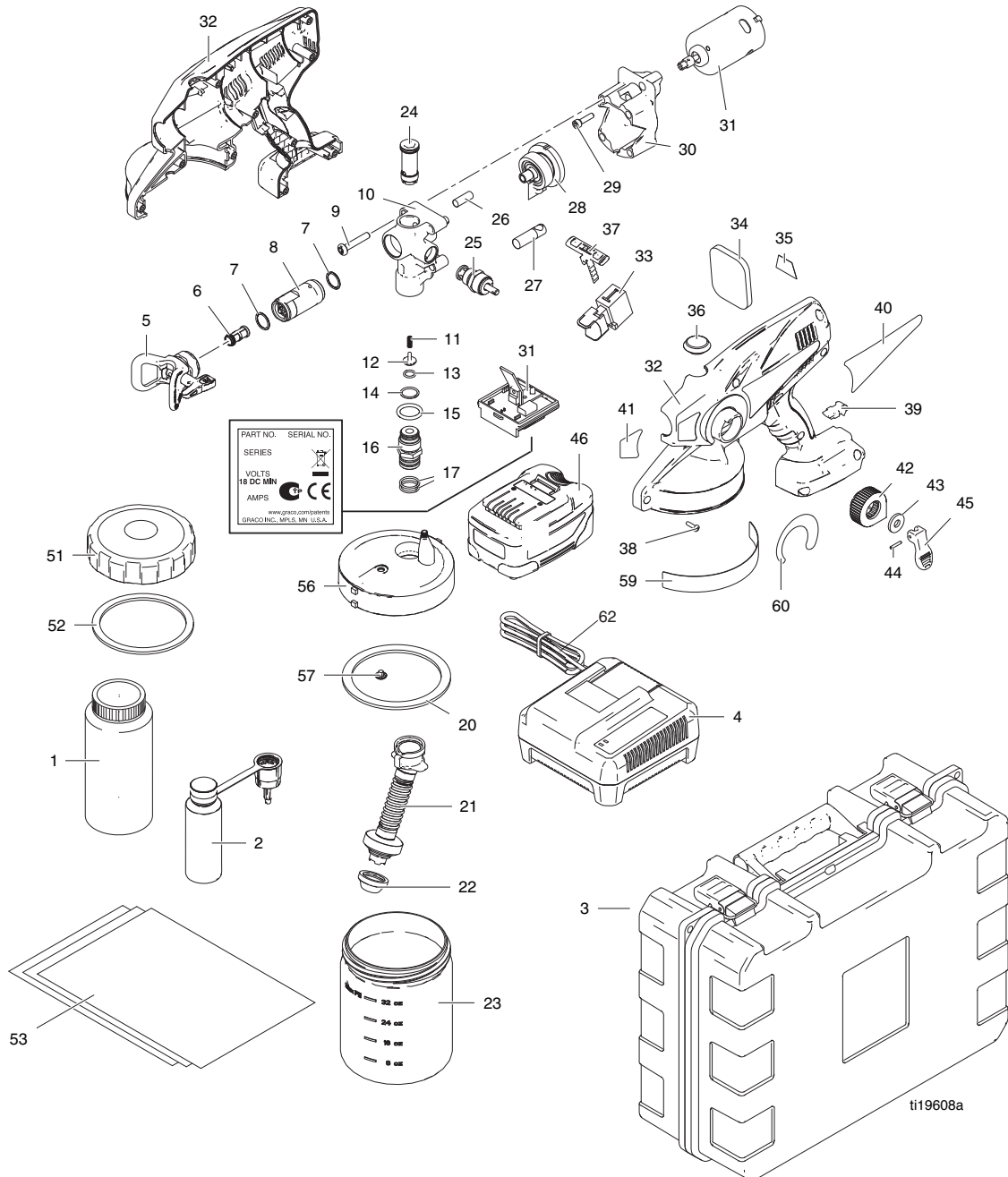


Graco TrueCoat Pro-X Gen II Cordless

Replacement Parts

Replacement Parts

Models 16N664, 16N665, 16N666, 16N668, 16N669, 16N670



Replacement Parts

Parts List - Models 16N664, 16N665, 16N666, 16N668, 16N669, 16N670

Ref.	If you have this model sprayer (model number is the same as the part number, which is between the battery and the sprayer)	Order Part Number:	Description
	Model 16N670	262843	Sprayer Replacement Kit: includes parts 2, 7-20, 24-45, 56, 57, 59, 60
	Models 16N664, 16N665	262845	Sprayer Replacement Kit: includes parts 2, 7-20, 24-45, 56, 57, 59, 60
	Model 16N666	262846	Sprayer Replacement Kit: includes parts 2, 7-20, 24-45, 56, 57, 59, 60
	Models 16N668, 16N669	262847	Sprayer Replacement Kit: includes parts 2, 7-20, 24-45, 56, 57, 59, 60
1	All models	243103	Pump Armor (32 oz)
2	Non-Euro Models 16N668, 16N669, 16N670	16M816	Startup/Storage Kit
	Euro Models 16N664, 16N665, 16N666	16P358	Startup/Storage Kit
3	Blue Case Models 16N668, 16N669, 16N670	16P458	Storage Case
	Black Case Models 16N664, 16N665, 16N666	16P457	Storage Case
4	100-120V Models: 16N668	16D559	Battery Charger
	230V Models: 16N664, 16N665, 16N666	16D799	Battery Charger
	230V Models: 16N669, 16N670	16G615	Battery Charger
5	All models	PST211	211 Spray Tip/Guard Assembly
	All models	PST213	213 Spray Tip/Guard Assembly
	All models	PST315	315 Spray Tip/Guard Assembly
	All models	PST411	411 Spray Tip/Guard Assembly
	All models	PST413	413 Spray Tip/Guard Assembly
	All models	PST515	515 Spray Tip/Guard Assembly
	All models	PST517	515 Spray Tip/Guard Assembly
	Models 16N664, 16N665, 16N666	PST309	309 Spray Tip/Guard Assembly
6	All models	24E376	1 pack Spray Tip Filter
	All models	24F039	3 pack Spray Tip Filter
7	All models	108195	Needle Assembly O-ring
8	All models	262437	Needle Assembly Kit: includes parts 7 (qty. 2), 8
9	All models	115478	Screw
10	All models	16M865	Complete Pump Assembly w/Adjustable Prime/Spray Valve: includes parts 10, 11-17, 24-28, 44
	All models	16M868	Pump Housing Only: includes parts 10, 26, 27, 44
11	All models	262602	Inlet valve Repair Kit; includes 11, 12, 13
12	All models	262602	Inlet valve Repair Kit; includes 11, 12, 13
13	All models	262602	Inlet valve Repair Kit; includes 11, 12, 13
14	All models	109576	O-ring
15	All models	119790	O-ring
16	All models	16P151	Inlet/Outlet Valve Repair Kit: includes parts 11-17, 24
17	All models	106553	Suction Tube O-ring
20	All models	16J731	Sprayer Cup Seal
21	All models	16P121	Flexible Suction Tube Kit: includes parts 17 (qty. 2), 21, 22
22	All models	16N522	Flexible Suction Tube Strainer
23	All models	16D560	32 oz Material Cup: includes parts 23, 51, 52
		16D561	48 oz Material Cup: includes parts 23, 51, 52
24	All models	16P151	Inlet/Outlet Valve Repair Kit: includes parts 11-17, 24
25	All models	16M873	Adjustable Prime/Spray Valve Repair Kit: includes 25, 42-45

(Parts List continues on next page)

Replacement Parts

Parts List - Models 16N664, 16N665, 16N666, 16N668, 16N669, 16N670 (Continued)

Ref.	If you have this model sprayer (model number is the same as the part number, which is between the battery and the sprayer)	Order Part Number:	Description
26	All models	16M865	Complete Pump Assembly w/Adjustable Prime/Spray Valve: includes parts 10, 11-17, 24-28, 44
	All models	16M868	Pump Housing Only: includes parts 10, 26, 27, 44
27	All models	16M865	Complete Pump Assembly w/Adjustable Prime/Spray Valve: includes parts 10, 11-17, 24-28, 44
	All models	16M868	Pump Housing Only: includes parts 10, 26, 27, 44
28	All models	16M863	Reciprocator Assembly Kit: includes parts 28, 44
29	All models	108326	Motor Mount Screw
30	All models	16M924	Drive Housing Assembly Kit: includes parts 9 (qty. 4), 29 (qty. 2), 30, 44
31	All models	16M861	Motor/Control Board Kit: includes parts 29, 31, 33, 34, 44
32	Models 16N668, 16N669, 16N670	16P461	Enclosure Replacement Kit: includes parts 32, 34-37, 38 (qty. 10), 39, 44, 56, 57
	Models 16N664, 16N665, 16N666	16P462	Enclosure Replacement Kit: includes parts 32, 34-37, 38 (qty. 10), 39, 44, 56, 57
33	All models	16N928	Switch Kit: includes parts 33, 34
34	Models 16N668, 16N669, 16N670	16P461	Enclosure Replacement Kit: includes parts 32, 34-37, 38 (qty. 10), 39, 44, 56, 57
	Models 16N664, 16N665, 16N666	16P462	Enclosure Replacement Kit: includes parts 32, 34-37, 38 (qty. 10), 39, 44, 56, 57
35	Models 16N668, 16N669, 16N670	16E859	Made in USA Label
	Models 16N664, 16N665, 16N666	16F636	Made in USA Label
36	All models	16C936	Outlet Valve Access Plug
37	Models 16N668, 16N669, 16N670	16P461	Enclosure Replacement Kit: includes parts 32, 34-37, 38 (qty. 10), 39, 44, 56, 57
	Models 16N664, 16N665, 16N666	16P462	Enclosure Replacement Kit: includes parts 32, 34-37, 38 (qty. 10), 39, 44, 56, 57
38	All models	119236	Enclosure Screw
39	Models 16N668, 16N669, 16N670	16P461	Enclosure Replacement Kit: includes parts 32, 34-37, 38 (qty. 10), 39, 44, 56, 57
	Models 16N664, 16N665, 16N666	16P462	Enclosure Replacement Kit: includes parts 32, 34-37, 38 (qty. 10), 39, 44, 56, 57
40	Model 16N670	16N556	Side Brand Label
	Models 16N664, 16N665	16P157	Side Brand Label
	Models 16N668, 16N669	16P159	Side Brand Label
41	All models	16R890	Front Brand Label
42	All models	16M873	Adjustable Prime/Spray Valve Repair Kit: includes parts 25, 42-45
43	All models	16M873	Adjustable Prime/Spray Valve Repair Kit: includes parts 25, 42-45
44	All models	119956	Pin
45	All models	262604	Prime Valve Handle: includes parts 44, 45
46	All models	17C930	Battery
51	All models	24D425	Material Cup Cover: includes parts 51, 52
52	All models	16C650	Seal for Material Cup
53	All models	16D562	Cup Liner Replacement (10 pack)

(Parts List continues on next page)

Replacement Parts

Parts List - Models 16N664, 16N665, 16N666, 16N668, 16N669, 16N670 (Continued)

Ref.	If you have this model sprayer (model number is the same as the part number, which is between the battery and the sprayer)	Order Part Number:	Description
56	Models 16N668, 16N669, 16N670	16P461	Enclosure Replacement Kit: includes parts 32, 34-37, 38 (qty. 10), 39, 44, 56, 57
	Models 16N664, 16N665, 16N666	16P462	Enclosure Replacement Kit: includes parts 32, 34-37, 38 (qty. 10), 39, 44, 56, 57
57	All models	16M890	Air Vent Valve
59	Models 16N664, 16N665, 16N668, 16N669, 16N670	16R891	Cup Lip Brand Label
60	All models	16R889	Pressure Control Label
62			Power Cord
	All models	16Y542	Europe
	All models	16Y543	Australia
	All models	16Y544	U.K.
Not Shown	All Models	▲16P459	Warning Labels Replacement Kits ENG/FRE/SPA
	All Models	▲16P002	Warning Labels Replacement Kits CHI/JAP/KOR
	All Models	▲16P003	Warning Labels Replacement Kits SPA/POR/ITA
Not Shown	Models 16N664, 16N665, 16N666	▲16P207	Sprayer Enclosure Warning Label Kit
	Models 16N664, 16N665, 16N666	▲17C995	Battery Warning Label
	Models 16N664, 16N665, 16N666	▲16T125	Charger Warning Label (top)
	Models 16N664, 16N665, 16N666	▲17C996	Charger Warning Label (side)

▲ Replacement Danger and Warning labels, tags, and cards (Not Shown) are available at no cost.