

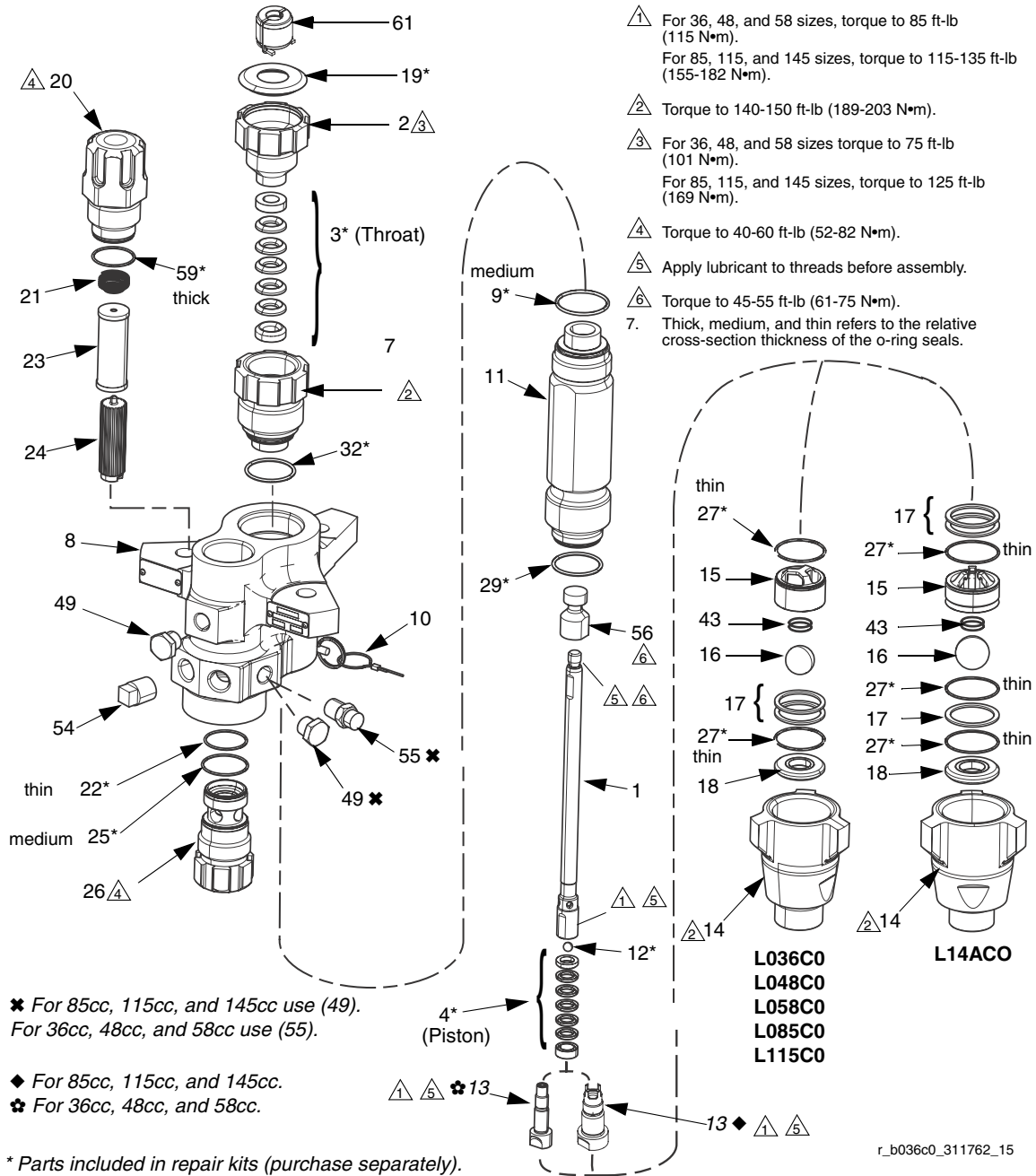
Graco Xtreme NXT

Parts

Parts

XP70 Sprayer Lower Models

36cc, 48cc, 58cc, 85cc, 115cc, and 145cc



Parts

35cc, 48cc, 58cc, 85cc, 115cc, and 145cc Models

Ref.	Descriptions	36cc	48cc	58cc	85cc	115cc	145cc	Qty.
		L036C0	L048C0	L058C0	L085C0	L115C0	L14AC0	
1	ROD, displacement	16D458	16D459	16D460	15J091	15J092	15J093	1
2	NUT, packing	16D468	16D468	16D468	15K029	15K029	15K030	1
3*	PACKINGS, stack; throat	See Repair Kits on page 23.						1
4*	PACKINGS, stack; piston	See Repair Kits on page 23.						1
7	CARTRIDGE, packing, throat	16D467	16D467	16D467	15F660	15F661	197325	1
8	HOUSING, outlet	15F659	15F659	15F659	15F659	15F659	16E151	1
9*	O-RING, top cylinder; PTFE, medium (10 pack)	288067	288067	288067	288067	288067	244892	1
10	PIN, self-locking	244826	244826	244826	244826	244826	244826	1
11	CYLINDER, lower	16D469	16D470	16D471	15F685	15F656	197315	1
12	BALL, piston (pack of 3)	262485	262485	262485	288065	288065	253029	1
13	VALVE, piston	16D464	16D464	16D464	15F669	15F657	197309	1
14	HOUSING, inlet	15F667	15F667	15F667	15F667	15F667	197303	1
15	GUIDE, ball, inlet	16D472	16D472	16D472	16D472	16D472	198646	1
16*	BALL, inlet (pack of 3)	244899	244899	244899	244899	244899	253031	1
17	SHIM, inlet, ball guide (pack of 9)	288064	288064	288064	288064	288064	244855 (3)	2 (3)
18	SEAT, inlet	15F665	15F665	15F665	15F665	15F665	196358	1
19*	PLUG, throat seal (pack of 10)	247393	247393	247393	247393	247393	15K021	1
20†	CAP, filter, top	16F270	16F270	16F270	16F270	16F270	16F269	1
21	SPRING, compression	171941	171941	171941	171941	171941	171941	1
22*†	O-RING, filter; thin, PTFE (10 pack)	244895	244895	244895	244895	244895	244895	1
23	STRAINER, 30 mesh screen; see page 25 for more options	236495	236495	236495	236495	236495	224458	1
24	SUPPORT, filter	188420	188420	188420	188420	188420	186075	1
25*†	O-RING, filter; medium, PTFE (10 pack)	262484	262484	262484	262484	262484	262484	1
26†	CAP, filter	16F268	16F268	16F268	16F268	16F268	16F268	1
27*	O-RING; foot valve, PTFE, thin (pack of 10)	288068 (2)	288068 (2)	288068 (2)	288068 (4)	288068 (4)	244890 (5)	(x)
29*	O-RING; cylinder bottom, PTFE (pack of 10) 256512 medium, 288068 thin	262512	262512	262512	288068	288068	288068	1
30▲	TAG, warning	172479	172479	172479	172479	172479	172479	1
32*	O-RING, PTFE, throat cartridge (10 pack) 256512 medium, 288068 thin	262512	262512	262512	288068	288068	288068	2
43	SPRING, foot valve	124007	124007	124007	124007	124007	116801	1
49	PLUG, pipe; 3/8 npt	198292	198292	198292	198292 (2)	198292 (2)	198292 (2)	1 (2)
54	PLUG, pipe; 1/2 in.	100737	100737	100737	100737	100737	100737	1
55	HOUSING, rupture disc assy	258962	258962	258962				1
56	ADAPTER, rod	15Y399	15Y399	15Y399				1
59*†	O-RING, filter; thick, PTFE (10 pack)	262483	262483	262483	262483	262483	262483	1
61	COUPLER, assembly	247167	247167	247167	247167	247167	244819	1

▲ Replacement Danger and Warning labels, tags, and cards are available at no cost.

* Parts included in repair kits (purchase separately).

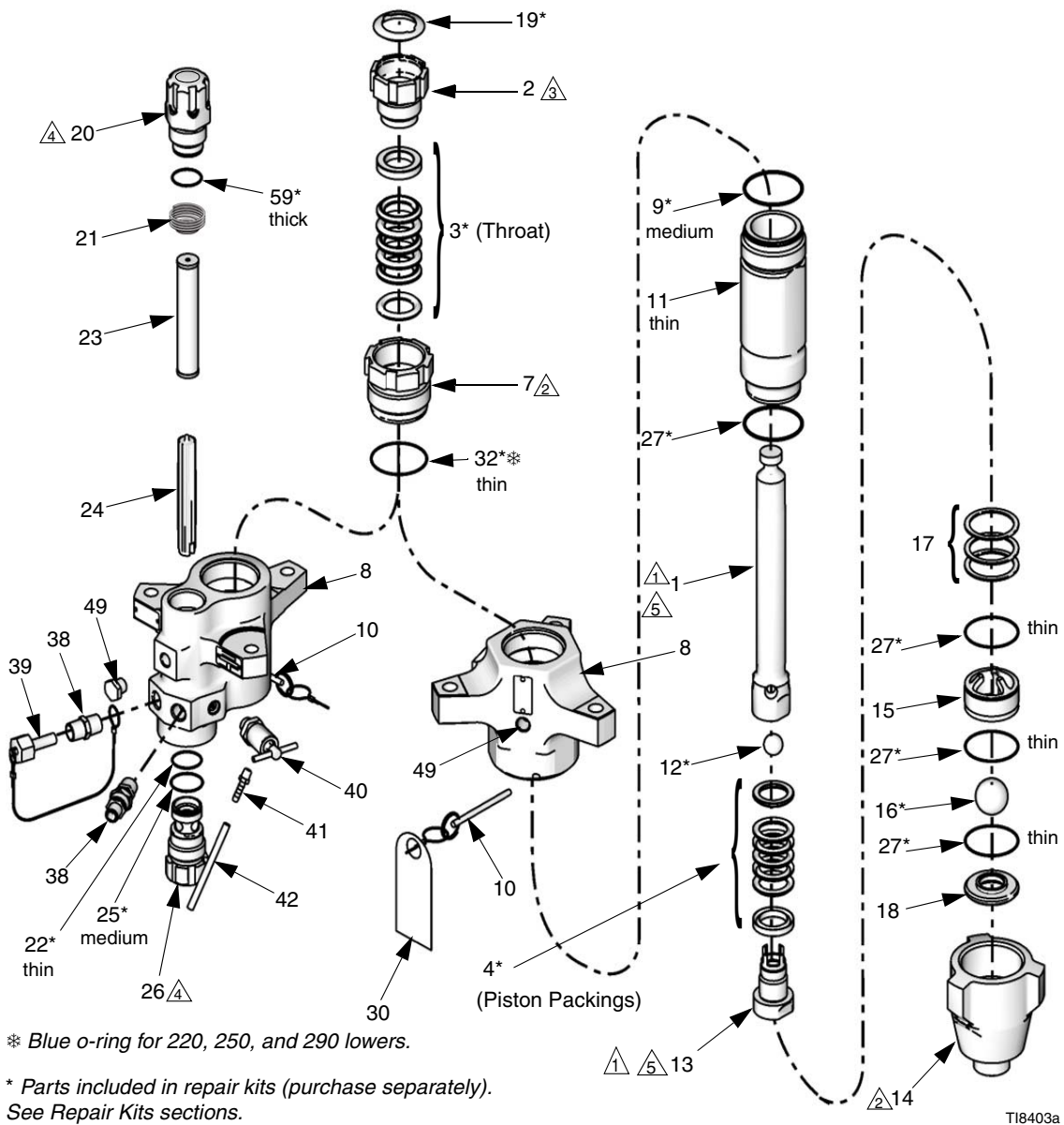
† See page 26 to verify correct part numbers.

Part numbers listed are for bulk quantities. Individual quantities are included in repair kits. See **Repair Kits** on page 23.

Parts

Xtreme Lowers Models
85cc 115cc, 145cc, 180cc, 220cc, 250cc, and 290cc

- ⚠1 For 220, 250, and 290cc sizes, torque to 190-210 ft-lb (258-285 N•m).
For 85, 115, 145 and 180cc sizes, torque to 115-135 ft-lb (155-182 N•m).
- ⚠2 Torque to 140-150 ft-lb (189-203 N•m).
- ⚠3 Torque to 125 ft-lb (169 N•m).
- ⚠4 Torque to 40-60 ft-lb (52-82 N•m).
- ⚠5 Apply lubricant to threads before assembly.
- 7. Thick, medium, and thin refers to the relative cross-section thickness of the o-ring seals.



* Blue o-ring for 220, 250, and 290 lowers.

* Parts included in repair kits (purchase separately).
See Repair Kits sections.

Parts

85cc and 115cc Models

Ref.	Descriptions	85cc		115cc		Qty.
		L085C1 L085C3	L085C2 L085C4	L115C1 L115C3	L115C2 L115C4	
1	ROD, displacement	24B819	24B819	24B820	24B820	1
2	NUT, packing	15K029	15K029	15K029	15K029	1
3*	PACKINGS, stack; throat	See Repair Kits on page 23.				1
4*	PACKINGS, stack; piston	See Repair Kits on page 23.				1
7	CARTRIDGE, packing, throat	15F660	15F660	15F661	15F661	1
8	HOUSING, outlet	15F659	15F659	15F659	15F659	1
9* †	O-RING, top cylinder; PTFE, medium (pack of 10)	288067	288067	288067	288067	1
10	PIN, self-locking	244826	244826	244826	244826	1
11	CYLINDER, lower	15F682	15F682	15F656	15F656	1
12*	BALL, piston; 9/16 in. (14.3 mm) (pack of 3)	288065	288065	288065	288065	1
13	VALVE, piston	24B818	24B818	24B817	24B817	1
14	HOUSING, inlet	15F667	15F667	15F667	15F667	1
15	GUIDE, ball, inlet	15F664	15F664	15F664	15F664	1
16*	BALL, inlet; 1.0 in. (25.4 mm) diameter (pack of 3)	244899	244899	244899	244899	1
17	SHIM, inlet, ball guide (pack of 9)	288064	288064	288064	288064	3
18	SEAT, inlet	15F665	15F665	15F665	15F665	1
19*	PLUG, throat seal (pack of 10)	247393	247393	247393	247393	1
20 †	CAP, filter, top		15F859		15F859	1
21	SPRING, compression		171941		171941	1
22* †	O-RING, filter; thin, PTFE (10 pack)		244895		244895	1
23	STRAINER, 60 mesh screen; see page 25 for more options		236496		236496	1
24	SUPPORT, filter		188420		188420	1
25* †	O-RING, filter; medium, PTFE (10 pack)		262484		262484	1
26 †	CAP, filter		16F268		16F268	1
27* †	O-RING; foot valve and cylinder bottom, PTFE, thin (pack of 10)	288068	288068	288068	288068	4
30▲	TAG, warning	172479	172479	172479	172479	1
32* †	O-RING, PTFE, throat cartridge, thin (10 pack)	288068	288068	288068	288068	1
38	FITTING, nipple, outlet 1/2 in.		158491		158491	2
39	PLUG, packless; 1/2 in.		244517		244517	1
40	VALVE, pressure dump		245143		245143	1
41	FITTING, barbed, plated		116746		116746	1
42	TUBE, nylon		116750		116750	1
49	PLUG, pipe	101754	198292	101754	198292	1
59 †	O-RING, filter; thick, PTFE (10 pack)	262483	262483	262483	262483	1

▲ Replacement Danger and Warning labels, tags, and cards are available at no cost.

* Parts included in repair kits (purchase separately).

† See page 26 to verify correct part numbers.

Part numbers listed are for bulk quantities. Individual quantities are included in repair kits. See **Repair Kits** on page 23.

Parts

145cc and 180cc Models

Ref.	Descriptions	145cc			180cc			Qty.
		L145C1 L145C3	L145C2 L145C4	L14AC1	L180C1 L180C3	L180C2 L180C4	L18AC1	
1	ROD, displacement	24B821	24B821	24B821	24B822	24B822	24B822	1
2	NUT, packing	15K030	15K030	15K030	15K030	15K030	15K030	1
3*	PACKINGS, stack; throat	See Repair Kits on page 23.						1
4*	PACKINGS, stack; piston	See Repair Kits on page 23.						1
7	CARTRIDGE, packing, throat	197325	197325	197325	197325	197325	197325	1
8	HOUSING, outlet	197334	197336	15J673	197334	197336	15J673	1
9* †	O-RING, top cylinder; PTFE, medium (pack of 10)	244892	244892	244892	244892	244892	244892	1
10	PIN, self-locking	244826	244826	244826	244826	244826	244826	1
11	CYLINDER, lower	197315	197315	197315	197316	197316	197316	1
12*	BALL, piston; 3/4 in. (19.05 mm) (pack of 3)	253029	253029	253029	253029	253029	253029	1
13	VALVE, piston	24B826	24B826	24B826	24B827	24B827	24B827	1
14	HOUSING, inlet	197303	197303	197303	197303	197303	197303	1
15	GUIDE, ball, inlet	197307	197307	197307	197307	197307	197307	1
16*	BALL, inlet; 1.25 in. diameter (pack of 3)	253031	253031	253031	253031	253031	253031	1
17	SHIM, inlet, ball guide (pack of 9)	244855	244855	244855	244855	244855	244855	3
18	SEAT, inlet	196358	196358	196358	196358	196358	196358	1
19*	PLUG, throat seal (pack of 10)	247394	247394	247394	247394	247394	247394	1
20 †	CAP, filter, top		16F269			16F269		1
21	SPRING, compression		171941			171941		1
22*	O-RING, filter; thin, PTFE (10 pack)		244895			244895		1
23	STRAINER, 60 mesh screen; (2 pack) see page 25 for more options		224459			224459		1
24	SUPPORT, filter		186075			186075		1
25* †	O-RING, filter; medium, PTFE (10 pack)		262484			262484		1
26 †	CAP, filter		16F268			16F268		1
27*	O-RING; foot valve and cylinder bottom, PTFE, thin (pack of 10)	244890	244890	244890	244890	244890	244890	4
30▲	TAG, warning	172479	172479	172479	172479	172479	172479	1
32* †	O-RING, PTFE, throat cartridge, blue, thin (10 pack)	244890	244890	244890	244890	244890	244890	1
38	FITTING, nipple, outlet 1/2 in.		158491			158491		1
39	PLUG, packless; 1/2 in.		244517			244517		1
40	VALVE, pressure dump		245143			245143		1
41	FITTING, barbed, plated		116746			116746		1
42	TUBE, nylon		116750			116750		1
49	PLUG, pipe	101754	198292	101754	101754	198292	101754	1
59 †	O-RING, filter; thick, PTFE (10 pack)	262483	262483	262483	262483	262483	262483	1

▲ Replacement Danger and Warning labels, tags, and cards are available at no cost.

* Parts included in repair kits (purchase separately).

† See page 26 to verify correct part numbers.

Part numbers listed are for bulk quantities. Individual quantities are included in repair kits. See **Repair Kits** on page 23.

Parts

220cc and 250cc Models

Ref.	Descriptions	220cc			250cc		Qty.
		L220C1 L220C3	L220C2 L220C4	L22AC1	L250C1 L250C3	L250C2 L250C4	
1	ROD, displacement	24B823	24B823	24B823	24B824	24B824	1
2	NUT, packing	15K031	15K031	15K031	15K031	15K031	1
3*	PACKINGS, stack; throat	See Repair Kits on page 23.					1
4*	PACKINGS, stack; packing	See Repair Kits on page 23.					1
7	CARTRIDGE, packing, throat	197327	197327	197327	197328	197328	1
8	HOUSING, outlet	197335	197337	15H722	197335	197337	1
9†	O-RING, top cylinder; PTFE, medium (pack of 10)	244893	244893	244893	244893	244893	1
10	PIN, self-locking	244826	244826	244826	244826	244826	1
11	CYLINDER, lower	197317	197317	197317	197318	197318	1
12	BALL, piston; 7/8 in. (22 mm) diameter (pack of 3)	244898	244898	244898	244898	244898	1
13	VALVE, piston	24B828	24B828	24B828	24B829	24B829	1
14	HOUSING, inlet	197304	197304	197304	197304	197304	1
15	GUIDE, ball, inlet	197308	197308	197308	197308	197308	1
16*	BALL, inlet; 1.5 in diameter (pack of 3)	253030	253030	253030	253030	253030	1
17	SHIM, inlet, ball guide (pack of 9)	244856	244856	244856	244856	244856	3
18	SEAT, inlet	197344	197344	197344	197344	197344	1
19*	PLUG, throat seal (pack of 10)	247395	247395	247395	247395	247395	1
20†	CAP, filter, top		16F269			16F269	1
21	SPRING, compression		171941			171941	1
22*†	O-RING, filter; thin, PTFE (10 pack)		244895			244895	1
23	STRAINER, 60 mesh screen (2 pack); see page 25 for more options		224459			224459	1
24	SUPPORT, filter		186075			186075	1
25*†	O-RING, filter; medium, PTFE (10 pack)		262484			262484	1
26†	CAP, filter		16F268			16F268	1
27*†	O-RING; foot valve and cylinder bottom, PTFE, thin (pack of 10)	244894	244894	244894	244894	244894	4
30▲	TAG, warning	172479	172479	172479	172479	172479	1
32*†	O-RING, PTFE, throat cartridge, blue, thin(10 pack)	244891	244891	244891	244891	244891	1
38	FITTING, nipple, outlet 1/2 in.		158491			158491	1
39	PLUG, packless; 1/2 in.		244517			244517	1
40	VALVE, pressure dump		245143			245143	1
41	FITTING, barbed, plated		116746			116746	1
42	TUBE, nylon		116750			116750	1
49	PLUG, pipe	101754	198292	101754	101754	198292	1
59*†	O-RING, filter; thick, PTFE (10 pack)	262483	262483	262483	262483	262483	1

▲ Replacement Danger and Warning labels, tags, and cards are available at no cost.

* Parts included in repair kits (purchase separately).

† See page 26 to verify correct part numbers.

Part numbers listed are for bulk quantities. Individual quantities are included in repair kits. See **Repair Kits** on page 23.

Parts

290cc Models

Ref.	Descriptions	290cc			Qty.
		L290C1 L290C3	L290C2 L290C4	L29AC1	
1	ROD, displacement	24B825	24B825	24B825	1
2	NUT, packing	15K031	15K031	15K031	1
3*	PACKINGS, stack, throat	See Repair Kits , page 23.			1
4*	PACKINGS, stack; piston	See Repair Kits , page 23.			1
7	CARTRIDGE, packing, throat	197327	197327	197327	1
8	HOUSING, outlet	197335	197337	15H722	1
9* †	O-RING, top cylinder; PTFE, medium (pack of 10)	244893	244893	244893	1
10	PIN, self-locking	244826	244826	244826	1
11	CYLINDER, lower	197319	197319	197319	1
12	BALL, piston; 7/8 in. (22 mm) diameter (pack of 3)	244899	244899	244899	1
13	VALVE, piston	24B830	24B830	24B830	1
14	HOUSING, inlet	197304	197304	197304	1
15	GUIDE, ball, inlet	197308	197308	197308	1
16*	BALL, inlet; 1.5 in. diameter (pack of 3)	253030	253030	253030	1
17	SHIM, inlet, ball guide (pack of 9)	244856	244856	244856	3
18	SEAT, inlet	197344	197344	197344	1
19*	PLUG, throat seal (pack of 10)	247395	247395	247395	1
20 †	CAP, filter, top		16F269		1
21	SPRING, compression		171941		1
22* †	O-RING, filter; thin, PTFE (10 pack)		244895		1
23	STRAINER, 60 mesh screen; (2 pack) see page 25 for more options		236496		1
24	SUPPORT, filter		186075		1
25* †	O-RING, filter; medium, PTFE (10 pack)		262484		1
26 †	CAP, filter		16F268		1
27* †	O-RING; foot valve and cylinder bottom, PTFE, thin (pack of 10)	244894	244894	244894	4
30▲	TAG, warning	172479	172479	172479	1
32* †	O-RING, PTFE, throat cartridge, blue, thin (10 pack)	244891	244891	244891	1
38	FITTING, nipple, outlet 1/2 in.		158491		1
39	PLUG, packless; 1/2 in.		244517		1
40	VALVE, pressure dump		245143		1
41	FITTING, barbed, plated		116746		1
42	TUBE, nylon		116750		1
49	PLUG, pipe	101754	198292	101754	1
59* †	O-RING, filter; thick, PTFE (10 pack)		262483		1

▲ Replacement Danger and Warning labels, tags, and cards are available at no cost.

* Parts included in repair kits (purchase separately).

† See page 26 to verify correct part numbers.

Part numbers listed are for bulk quantities. Individual quantities are included in repair kits. See **Repair Kits** on page 23.