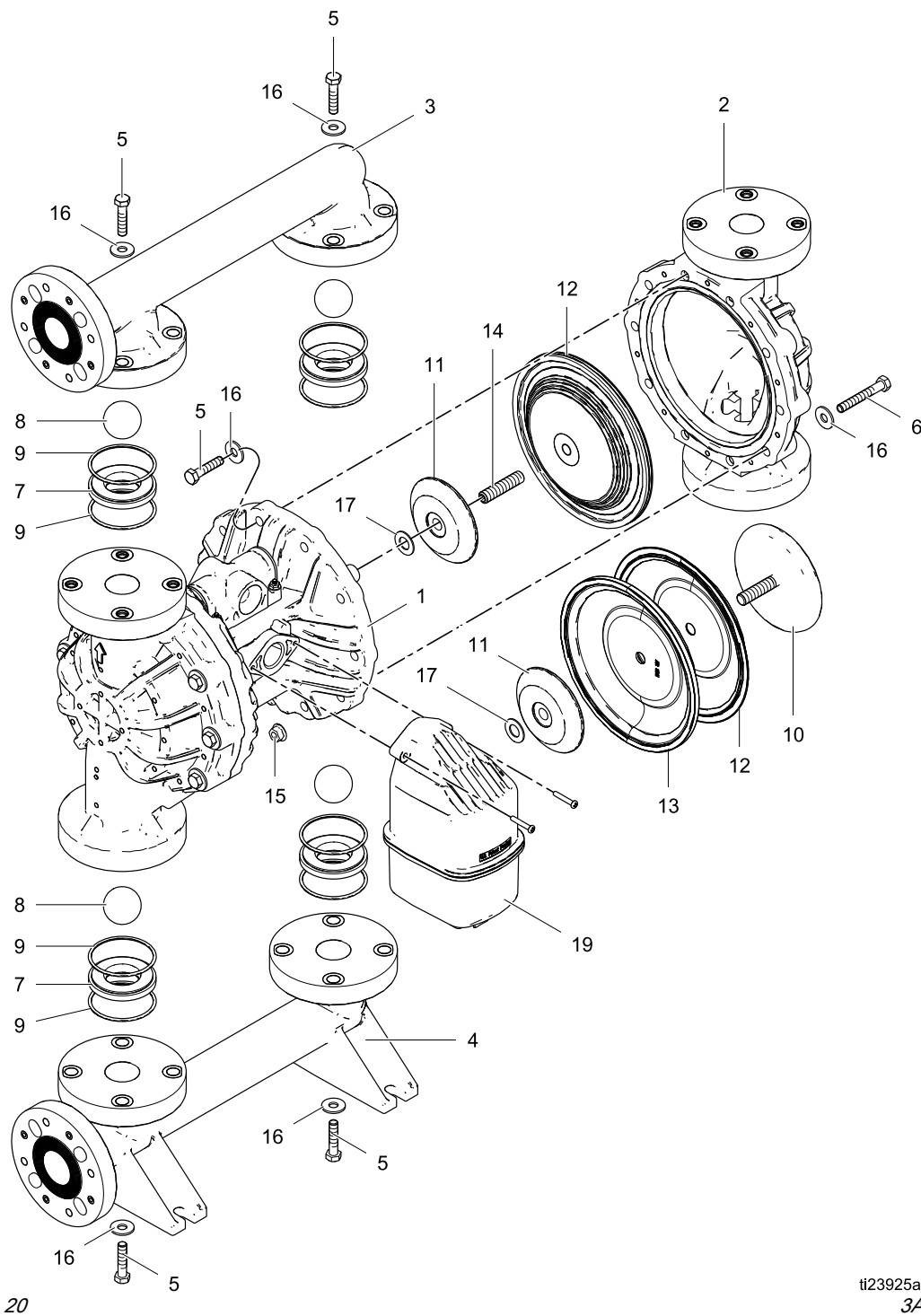


Graco Husky 15120

Parts

Parts



ti23925a
3A2889A

Parts

Parts/Kits Quick Reference

Use this table as a quick reference for parts/kits. Go to the pages indicated in the table for a full description of kit contents.

Ref.	Part/Kit	Description	Qty.	Ref.	Part/Kit	Description	Qty.
1	— — —	Center Section; Polypropylene, not sold separately	1	9	24W212	O-RING, seat; 8-pack, <i>see</i> <i>page 30</i>	1
102	24B773	Air Valve; <i>see page 24</i>	1	10		Fluid Side Diaphragm Plate; <i>see page 29</i>	2
2		Fluid Cover Kits; <i>see page</i> <i>26</i>	2		24W221	Polypropylene	
	24W210	Polypropylene			24W222	PVDF	
	24W216	PVDF		11	24W231	Air Side Diaphragm Plate; includes washer (Ref. 17); <i>see page 29</i>	2
3		Outlet Manifold Kits; <i>see</i> <i>page 26</i>	1	12		Diaphragm Kits; 2-pack, <i>see pages 28 to 29</i>	1
	24W232	Polypropylene, center flange			24W219	FKM Fluoroelastomer, 1-piece, bolt-through	
	24W214	Polypropylene, end flange			24W218	Santoprene , 1-piece, bolt-through	
	24W265	PVDF, end flange			24W217	PTFE/EPDM Overmolded; includes screw (Ref. 14)	
4		Inlet Manifold Kits; <i>see</i> <i>page 26</i>	1		24W220	PTFE/Santoprene 2-Piece, bolt-through; includes backup diaphragm (Ref. 13)	
	24W264	Polypropylene, center flange		13	— — —	DIAPHRAGM, backup, Santoprene	1
	24W215	Polypropylene, end flange		14	— — —	SCREW, set; included with PO diaphragms (Ref. 12).	
	24W266	PVDF, end flange		15	— — —	NUT, included with Ref. 6	16
5	24W213	Manifold Fastener Kit; <i>see</i> <i>page 26</i>	2	16	— — —	WASHER, included with Ref. 5 and Ref. 6	40
6	24W211	Fluid Cover Fastener Kit; <i>see page 26</i>	2	17	— — —	WASHER, included with Ref. 11	1
7		Seats; 4-pack, <i>see page 27</i>	1	18	188621▲	LABEL, warning	1
	24W225	Polypropylene		19	24P932	Muffler; includes o-ring and mounting hardware	1
	24W223	PVDF		20	16X034▲	TAG, torque instructions	1
	24W226	Santoprene		21	198382▲	LABEL, warning, multilingual	1
	24W227	Stainless Steel					
8		BALLS, valve, check; 4-pack; <i>see page 27</i>	1				
	24W230	FKM					
	24W228	PTFE					
	24W229	Santoprene					

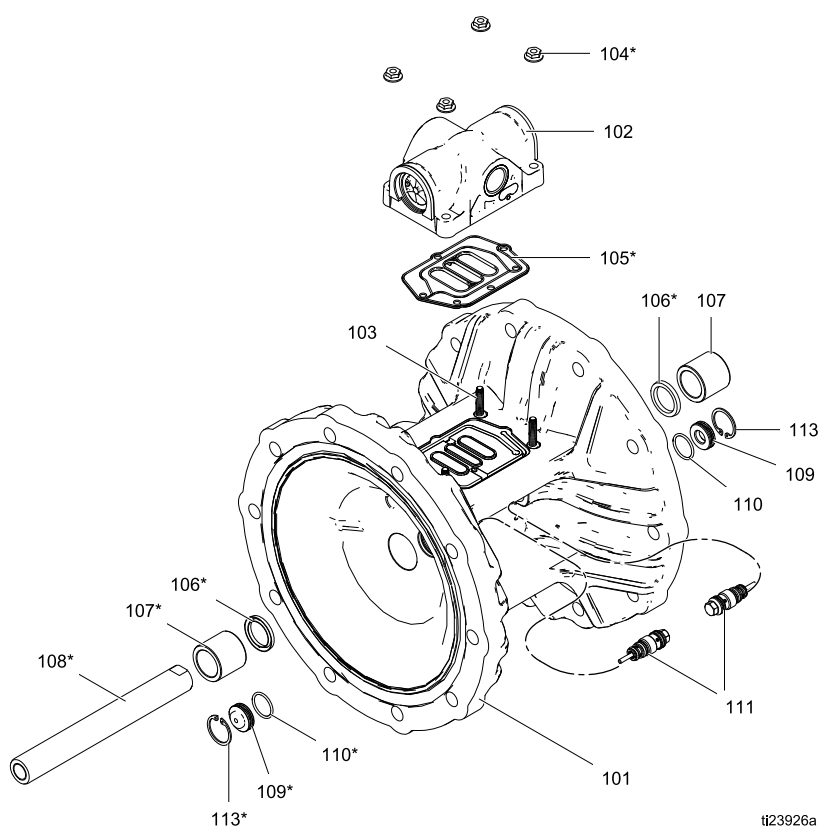
▲ Replacement Warning labels, signs, tags, and cards are available at no cost.

Parts

Center Section

Sample Configuration Number

Pump Model	Center Section and Air Valve	Fluid Covers and Manifolds	Seats	Balls	Diaphragms	Seat and Manifold Seal
15120P	P01A	P1	PP	PT	FK	PT



Ref	Description	Qty	Ref	Description	Qty
101	HOUSING, center, not sold separately	1	108*	SHAFT, center	1
102	VALVE, air, <i>see page 24</i>	1	109*	CARTRIDGE, pilot receiver	2
103	SCREW, hi-lo stud	4	110*	O-RING, Buna-N	2
104*	NUT, hex, flange, serrated	4	111*	VALVE, pilot, assembly	2
105*	GASKET, air valve	1	112*	LUBRICANT	1
106*	U-CUP, center shaft	2	113*	RING, retaining	2
107*	BEARING, shaft	2			

* Included in Center Section Rebuild Kit.

Parts

Sample Configuration Number

Pump Model	Center Section and Air Valve	Fluid Covers and Manifolds	Seats	Balls	Diaphragms	Seat and Manifold Seal
15120P	P01A	P1	PP	PT	FK	PT

Center Section Rebuild Kits (*)	
P01A with 2-Piece diaphragms (PT) or standard diaphragms (SP, FK)	24W206
P01G with overmolded diaphragms (PO)	24W207

Kits include:

- 1 center shaft (108)
- 4 hex nuts, serrated (104)
- 2 center shaft bearings (107)
- 2 center shaft u-cups (106)
- 1 air valve gasket (105)
- 8 seat o-rings (9)
- 2 pilot valves (111)
- 2 pilot valve receiver cartridges (109)
- 2 retaining rings (113)
- 2 receiver cartridge o-rings (110)
- 1 grease packet (112)

Pilot Valve Assembly Kit	
All models	24V823

Kit includes:

- 2 pilot valves (111)
- 2 pilot valve receiver cartridges (109)
- 2 receiver cartridge o-rings (110)
- 1 grease packet (112)
- 2 retaining rings (113)

Center Shaft Kits (*)	
P01A with 2-Piece diaphragms (PT) or standard diaphragms (SP, FK)	24W208
P01G with overmolded diaphragms (PO)	24W209

Kits include:

- 2 center shaft u-cups (106)
- 1 center shaft (108)
- 2 center shaft bearings (107)
- 1 grease packet (112)

Center Shaft Bearing Kit	
All models	24B658

Kit includes:

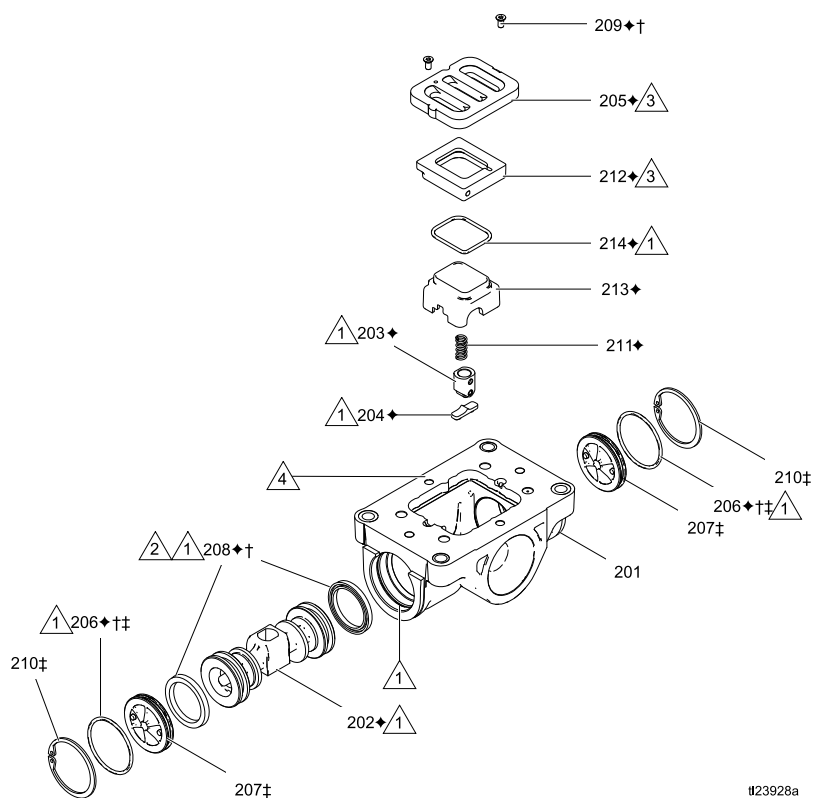
- 2 center shaft u-cups (106)
- 2 center shaft bearings (107)
- 1 grease packet (112)

Parts

Air Valve

Sample Configuration Number

Pump Model	Center Section and Air Valve	Fluid Covers and Manifolds	Seats	Balls	Diaphragms	Seat and Manifold Seal
15120P	P01A	P1	PP	PT	FK	PT



Ref	Description	Qty	Ref	Description	Qty
201	HOUSING, not sold separately	1	208♦†	U-CUP	2
202♦	PISTON	1	209♦†	SCREW, #4, thread forming	2
203♦	PISTON ASSEMBLY, detent	1	210‡	RETAINING RING	2
204♦	CAM, detent	1	211♦	SPRING, detent	1
205♦	PLATE, air valve	1	212♦	BASE, cup	1
206♦†‡	O-RING	2	213♦	CUP	1
207‡	CAP, end	2	214♦	O-RING, cup	1

♦ Parts included in Air Valve Repair Kit.

‡ Parts included in Air Valve End Cap Kit.

† Parts included in Air Valve Seals Kit..

Parts

Sample Configuration Number

Pump Model	Center Section and Air Valve	Fluid Covers and Manifolds	Seats	Balls	Diaphragms	Seat and Manifold Seal
15120P	P01A	P1	PP	PT	FK	PT

† Air Valve Seals Kit	
All models	24B769

Kit includes:

- 2 end cap o-rings (206)
- 2 piston u-cups (208)
- 2 screws, M3, shorter (not used)
- 2 screws, #4, longer (209)
- 1 air valve gasket (105)
- 1 grease packet (112)
- 1 solenoid release button o-ring (not shown), used only with optional DataTrak kit.

◆ Air Valve Repair Kit	
All models	24B768

Kit includes:

- 1 air valve piston (202)
- 1 detent piston assembly (203)
- 1 detent cam (204)
- 1 air valve plate (205)
- 2 end cap o-rings (206)
- 2 piston u-cups (208)
- 2 screws, M3, shorter (not used)
- 2 screws, #4, longer (209)
- 1 detent spring (211)
- 1 air cup base (212)
- 1 air cup (213)
- 1 air cup o-ring (214)
- 1 solenoid release button o-ring (not shown), used only with optional DataTrak kit.
- 1 air valve gasket (105)
- 1 grease packet (112)

Air Valve Replacement Kit	
All models	24B773

Kits include:

- 1 air valve assembly (102)
- 1 air valve gasket (105)
- 4 hex nuts (104)

‡ Air Valve End Cap Kit	
All models	24C053

Kit includes:

- 2 end caps (207)
- 2 retaining rings (210)
- 2 o-rings (206)
- 1 grease packet (112)

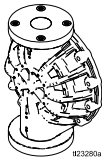
NOTE: If you have the optional DataTrak on your pump, see [Accessories, page 31](#), for Air Valve Replacement kits.

Parts

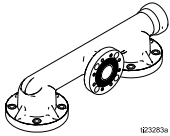
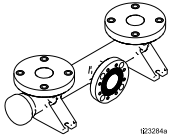
Fluid Covers and Manifolds

Sample Configuration Number

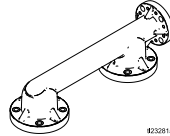
Pump Model	Center Section and Air Valve	Fluid Covers and Manifolds	Seats	Balls	Diaphragms	Seat and Manifold Seal
15120P	P01A	P1	PP	PT	FK	PT

Fluid Cover Kits			
Polypropylene		PVDF	
P1, P2	24W210	F2	24W216
			

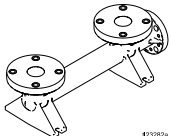
Kits include 1 fluid cover (2)

Center Manifold Kits (Polypropylene Only)		
P1	Outlet (3) 24W232	Inlet (4) 24W264
 		

Kits include 1 manifold

End Outlet Manifold Kits			
Polypropylene		PVDF	
P2	24W214	F2	24W265
			

Kits include 1 manifold (3)

End Inlet Manifold Kits			
Polypropylene		PVDF	
P2	24W215	F2	24W266
			

Kits include 1 manifold (4)

Fluid Cover Fastener Kits	
All Models	24W211

Kit includes:

- 6 bolts (6), hex head, stainless steel, M10 x 1.5 x 70 mm (2.76 in)
- 4 bolts (5), hex head, stainless steel, M10 x 1.5 x 45 mm (1.77 in.)
- 12 washers (16)
- 6 nuts (15), hex, flange, M10

Manifold Fastener Kits	
All Models	24W213

Kit includes:

- 8 bolts (5), hex head, stainless steel, M10 x 1.5 x 45 mm (1.77 in.)
- 8 washers (16)

Parts

Seats and Check Balls

Sample Configuration Number

Pump Model	Center Section and Air Valve	Fluid Covers and Manifolds	Seats	Balls	Diaphragms	Seat and Manifold Seal
15120P	P01A	P1	PP	PT	FK	PT

Seat Kits	
PP	24W225
SS	24W227
SP	24W226
PV	24W223

Kits include:

- 4 seats (7), material indicated in table.

NOTE: O-rings are sold separately. See **Manifold Seals, page 30.**

Ball Kits	
FK	24W230
PT	24W228
SP	24W229

Kits include:

- 4 balls (8), material indicated in table.

NOTE: O-rings are sold separately. See **Manifold Seals, page 30.**

Parts

Diaphragms

Sample Configuration Number

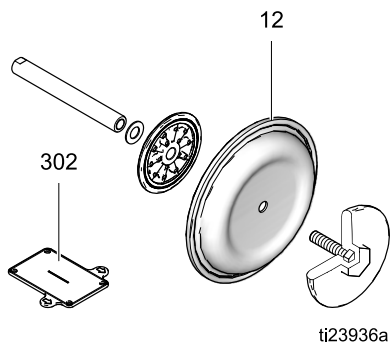
Pump Model	Center Section and Air Valve	Fluid Covers and Manifolds	Seats	Balls	Diaphragms	Seat and Manifold Seal
15120P	P01A	P1	PP	PT	FK	PT

1-Piece Bolt-Through Diaphragm Kits	
SP	24W218
FK	24W219

Kits include:

- 2 diaphragms (12), material indicated in table
- 1 diaphragm install tool (302)
- 1 packet anaerobic adhesive

NOTE: Fluid and Air plates are sold separately. The shaft is part of the Center Section Rebuild Kit (24W206) or the Center Shaft Kit (24W208). See [Center Section](#).

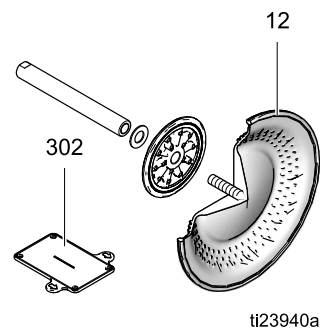


Overmolded Diaphragm Kit	
PO	24W217

Kits include:

- 2 overmolded diaphragms (12), material indicated in table.
- 2 diaphragm set screws, stainless steel (14)
- 1 diaphragm install tool (302)
- 1 packet anaerobic adhesive

NOTE: Air plates are sold separately. The shaft is part of the Center Section Rebuild Kit (24W207) or the Center Shaft Kit (24W209). See [Center Section](#).



Parts

Sample Configuration Number

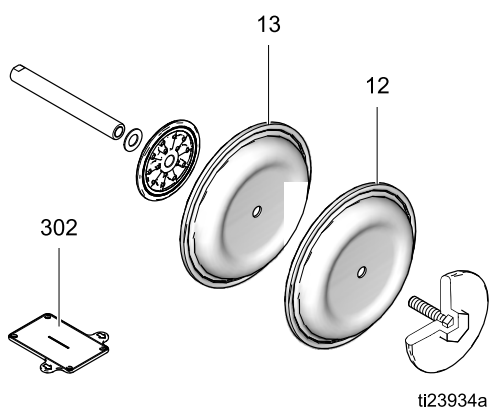
Pump Model	Center Section and Air Valve	Fluid Covers and Manifolds	Seats	Balls	Diaphragms	Seat and Manifold Seal
15120P	P01A	P1	PP	PT	FK	PT

2-Piece Bolt-Through Diaphragm Kit	
PT	24W220

Kits include:

- 2 diaphragms (12), PTFE
- 2 backup diaphragms (13), Santoprene
- 1 diaphragm install tool (302)
- 1 packet anaerobic adhesive

NOTE: Fluid and Air plates are sold separately. The shaft is part of the Center Section Rebuild Kit (24W206) or the Center Shaft Kit (24W208). See [Center Section](#).



Fluid Plate Kits	
P1, P2	24W221
F2	24W222

Kits include:

- 1 fluid side diaphragm plate (10), includes shaft bolt
- 1 packet anaerobic adhesive

Air Plate Kits	
All Models	24W231

Kits include:

- 1 air side plate (11)
- 1 washer (17)

Parts

Manifold Seals

Sample Configuration Number

Pump Model	Center Section and Air Valve	Fluid Covers and Manifolds	Seats	Balls	Diaphragms	Seat and Manifold Seal
15120P	P01A	P1	PP	PT	FK	PT

Manifold O-Ring Kits	
All Models	24W212

Kits include:

- 8 o-rings (9), PTFE

Accessories

Accessories

Muffler 111897

Legacy or remote exhaust muffler option.

NOTE: See DataTrak Manual 313840 for:

- Pulse Count Conversion Kit 24B794
- DataTrak Conversion Kits 24B784
- All other data monitoring parts, including reed switches and solenoids.

**Replacement Air Valve Kit 24B774,
Polypropylene, DataTrak Compatible**

Kit includes nuts, valve, and gasket.