

Mobile Decontamination Trailer



Part No. **0819-73 AUS**

SAFETY INFORMATION

This instruction manual includes important information regarding the USER'S SAFETY. Please make sure that you read these instructions carefully before commencing to use the trailer. If necessary, contact the dealer in order to ensure the safety of all persons and your property .

1 | BEFORE TRANSPORTING THE TRAILER, MAKE SURE THAT:

- a) The power cable, earthing, service pipes (water, gas, waste etc.), are disconnected from the mobile trailer.
- b) The trailer is correctly coupled to the tow hitch (**FIG. 1F**), that the safety wire is hooked up to the hitch loop on the towing vehicle (**FIG. 1C**), and that the outer lighting of the trailer is plugged in the socket of the towing vehicle.
- c) The hand brake is released. (**FIG. 1A**)
- d) the corner steady (**FIG. 2**) and the jockey wheel (**FIG. 1G**) are pulled up and fixed in travelling position.
- e) External lights are not damaged and work properly.
- f) Tyres are not damaged, have the correct tyre pressure that suit to the load and parameters, and the tread depth is in accordance with the rules.
- g) The steps are safely fixed to the door hitches.
- h) The door, windows, shutters and roof hatches are closed, locked and made secure against opening.
- i) The drawers and cabinets are fixed.
- j) All equipment, which is not fitted, is secured against any movement (TV, chairs, kitchen appliances, etc.).
- k) The load is evenly distributed (for safety reasons, individual parts must not be overloaded)

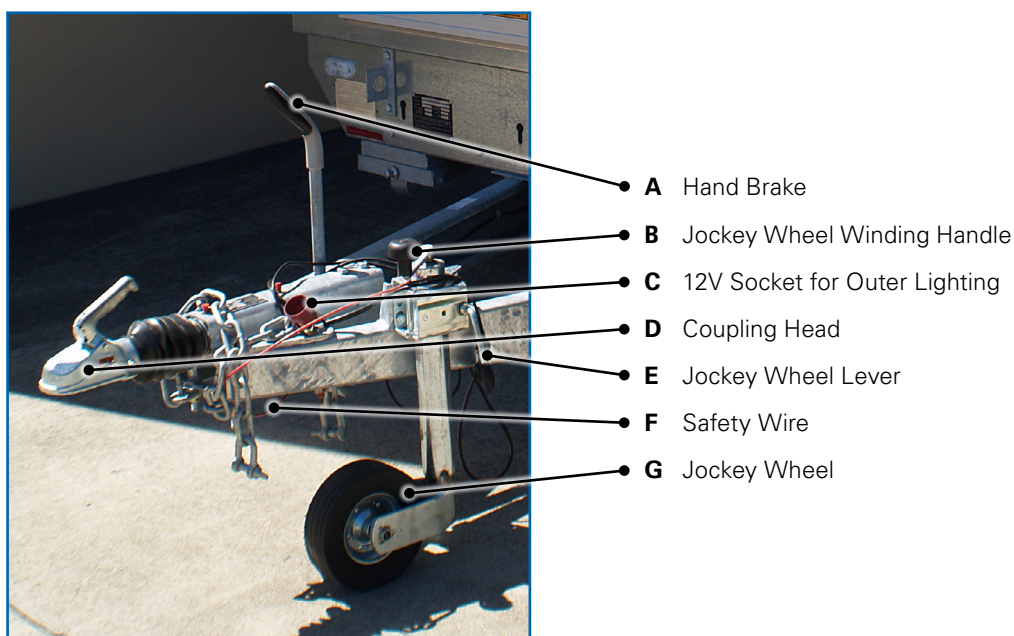


FIG. 1

2 | INSTALLING THE TRAILER FOR USAGE

- a) Move the trailer to the site where it is to be used, release and secure (**FIG. 1E**) the jockey wheel, and apply the hand brake (**FIG. 1A**). Be cautious when manipulating the trailer in confined spaces or when reversing. If necessary, ask for assistance.
- b) Unplug the outer lighting (**FIG. 1C**) and disconnect the safety wire from the towing vehicle.
- c) Use the jockey wheel (**FIG. 1G**) (swivel the handle (**FIG. 1B**) in an anticlockwise direction) to raise the draw-bar. Uncouple it from the towing vehicle.
- d) Use the corner steadies (**FIG. 2**) to secure the stability of the trailer. If the ground is soft, we recommend that you chock the steadies (e.g. pieces of wood). Wrench is located in the filter room access door (**FIG. 3**)
- e) Take off the steps from the interior part of the door and place them into the slots in the chassis under the door. Mount the handrail (**FIG. 4**).
- f) Connect the electric cable and water.



Do not disconnect the electric cable when your hands are damp or wet.
Do not handle the electric cable in a damp or wet environment.
You may be exposed to the risk of electric shocks.



FIG. 2



FIG. 3



FIG. 4

3 | CONNECTING AND OPERATING THE WIRING

Types of energy sources in the trailer:

- 1) 240V mains electrical connection: The connection points (3) are located on the side of the wagon (FIG. 5 - White Connection Sockets).



FIG. 5

4 | FITTING AND OPERATING WATER AND WASTE PIPES

When filling the fresh water tank, go to the small access door located on the side of the wagon (FIG. 6). Connect the water supply hosepipe to the connection point (FIG. 7) and open the red valve. The tank is filled in as the pressure is rising from water main.

In addition to the water tank, the trailer contains a septic tank located under the Thetford Toilet (150L) and a waste water tank located under the chassis in the middle (450L). All showers and sinks are connected to this waste water tank.



FIG. 6

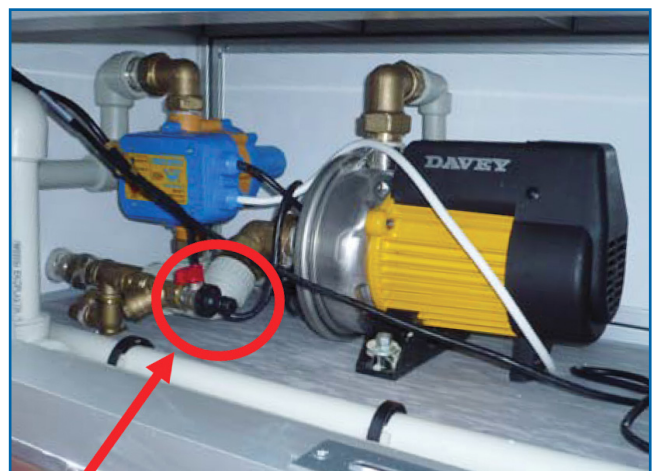


FIG. 7

5 | EMPTYING THE WASTE WATER TANKS

Before emptying the waste water tank, turn on the filtration system and allow it to run for 20 minutes to circulate the waste water through the filtration stages. The pump will automatically turn on the filtration system, which is located in the same access door as the fresh water connection point (FIG. 6 & 7).

Once the waste water has been circulated through the filtration system for the specified time, turn off the pump and connect the hose to the waste water discharge which is located under the wagon (FIG. 8)



FIG. 8

To empty the septic tank, the septic tank discharge valve is located on the side of the wagon (FIG. 9)



FIG. 9

6 | USE AND MAINTENANCE OF THE INTERIOR AND EXTERIOR

To clean the trailer, use only warm water and common detergents. DO NOT use solvents or diluters. DO NOT use pressure washers to wash the trailer: water may run into the wiring and cause damage to some interior and exterior parts. In such case, your warranty claim will be invalid.

If the outer shell is damaged, it must be repaired immediately. In doing so, you will prevent water to run into the inner walls, and thus avoid following complications (e.g. your warranty claim being regarded invalid).

Only authorized personnel should carry out any repairs and maintenance of all electrical appliances, power distribution, and the distribution of water, waste or gas.

Maintain the correct tyre pressure.

The folding corner steady (**FIG. 2**) MUST NOT be used to jack up the trailer (e.g. when changing the wheel). This may cause damage to the steady and your warranty claim will then be regarded invalid.

The jockey wheel (**FIG. 1G**) MUST NOT be used as a support. For that purpose, use the corner steadies. The jockey wheel is not to be used to jack up the trailer (with the exception of (un)coupling the towing vehicle provided that the corner steadies are released). Damage may be done to the jockey wheel and your warranty claim will then be regarded invalid.

7 | USE AND MAINTENANCE OF THE INTERIOR AND EXTERIOR

During transportation, installation and maintenance follow the rules described in articles 1 - 6 in the Manual. Use the trailer in accordance with official fire regulations, road traffic regulations, and laws regarding related branches.

In case of fire, while the trailer is connected to the power source, under no circumstances should you use water or a foam fire extinguisher to extinguish the fire .

It is forbidden to transport persons and animals in mobile trailers.

8 | DECLARATION

The trailer conforms to all requirements in compliance with Act No. 56 (the Road Traffic Act) , and has been approved accordingly. Any modification or reconstruction must be carried out in accordance with the applicable legislation.



WARNING

Before connecting the trailer to the power source, make sure that the electricity grid is in compliance with the information on the label.

Before connecting the electric cable, ensure the circuit breakers in the power distribution box are in "off " position. After the cable is connected, resume the "on" position. Make sure the energy source is on.

If the wiring in the trailer does not work, call qualified personnel, who are authorized to maintain and operate electrical equipment. An unauthorized person MUST NOT open or remove the covers from electrical equipment including sockets, switches, and plug ends. Any work on the above mentioned is FORBIDDEN. Avoid inserting any objects, which are not intended for the purpose, into electrical appliances. Protect the distribution wiring and electrical appliances from running or splashing water . Unauthorized persons are allowed only to change light bulbs.

Any unauthorized manipulation with electrical appliances may cause dangerous electric shocks or damage your property!!!

The trailer MUST be always disconnected from the power source before any maintenance or repair is carried out.

Do not disconnect the electric cable if your hands are damp or wet. Do not handle the electric cable in a damp or wet environment. You may be exposed to the risk of electric shocks.

Do not cover the direct heating and its panels with objects of any kind. To avoid risks of fire, do not use it for drying.