

PCWI PosiTector 6000

PosiTector® 6000 Series

Coating Thickness Gages for **ALL** Metal Substrates



DeFelsko®
The Measure of Quality



Available on the
App Store



PosiTector® 6000 Series

All Gages Feature...

Simple

- Ready to measure—no adjustment required for most applications
- Enhanced one-handed menu navigation
- Flashing display—ideal in a noisy environment
- RESET feature instantly restores factory settings

Durable

- Solvent, acid, oil, water and dust resistant—weatherproof
- Wear-resistant probe tip
- Shock-absorbing, protective rubber holster with belt clip
- Two year warranty on gage body AND probe

Accurate

- Certificate of Calibration showing traceability to NIST or PTB included
- Built-in temperature compensation ensures measurement accuracy
- Hi-RES mode increases displayed resolution for use on applications that require greater precision
- Conforms to national and international standards including ISO and ASTM

Versatile

- PosiTector body universally accepts all PosiTector 6000, 200, RTR, SPG, DPM and UTG probes easily converting from a coating thickness gage to a surface profile gage, dew point meter or ultrasonic wall thickness gage
- Multiple calibration adjustment options including 1 point, 2 point, known thickness, average zero
- Selectable display languages
- Hi Contrast backlit display for bright or dark environments
- Flip Display enables right-side-up viewing
- Extended cables available (up to 75 m/250 ft) for remote measuring
- Uses alkaline or rechargeable batteries (built-in charger)

Powerful

- Continually displays/updates average, standard deviation, min/max thickness and number of readings while measuring
- Screen Capture—save screen images for record keeping and review
- HiLo alarm audibly and visibly alerts when measurements exceed user-specified limits
- FAST mode—faster measurement speed for quick inspection
- USB port for fast, simple connection to a PC and to supply continuous power. USB cable included
- PosiSoft USB Drive—stored readings and graphs can be accessed using universal PC/Mac web browsers or file explorers. No software required
- Every stored measurement is date and time stamped
- Software updates via internet keep your gage current
- Connects to PosiSoft.net (see far right panel)

Probes available for a variety of applications



For measuring paint, powder, etc. on all metals...



...and for measuring galvanizing, plating, anodizing and more.

Standard Models

Includes ALL features as shown on left plus...

- Monochrome display with transreflective technology enhances sunlight readability
- Storage of 250 readings—stored readings can be viewed or downloaded

Advanced Models

Includes ALL features as shown on left plus...

- Hi Contrast reversible color LCD
- Storage of 100,000 readings in up to 1,000 batches and sub-batches
- Onscreen help, real time graphing, picture prompting and more
- Batch annotation—add notes and change batch names with onscreen QWERTY keyboard
- WiFi technology wirelessly synchronizes with PosiSoft.net, downloads software updates and connects with mobile devices for expanded functionality
- Data transfer via USB to a PC or via Bluetooth® Wireless Technology to a PC or printer
- Scan mode—take continuous readings without lifting the probe
- Multiple stored calibration adjustments for measuring on a variety of substrate conditions
- SSPC-PA2 feature determines if film thickness over a large area conforms to user-specified min/max levels
- PSPC 90/10 feature determines if a coating system complies with an IMO performance standard for protective coatings

NEW PosiTector SmartLink

- Wirelessly connect PosiTector 6000 probes to your smart device
- Turns your cell phone or tablet into a virtual PosiTector gage
- For a complete list of features visit www.defelsko.com/SmartLink



Select from a variety of measurement ranges and probe styles

(see back page ordering guide)

Heavy-duty, gold-plated locking connector for industrial environments



Separate Probe Style

Removable Probes can be detached and replaced with any one of our wide variety of probes including separate probes and microprobes



Built-in Probe Style



Rugged Features...

Sealed USB Port
for communicating
with a PC or Mac

Water and dust
resistant



Hi resolution color LCD

Scratch/solvent/impact
resistant lens

Multi-function
navigation button

Solvent, acid, oil
resistant, high grade,
industrial strength
housing

**Advanced
Model shown
in Memory Mode**

Quality high-flex
cable and strain relief

Stainless steel probe
with knurled finger grip

Strong wear-resistant
ruby-tipped probe



All Regular Separate Probes
are suitable for underwater use



Standard model shown in Statistics Mode with
shock-absorbing, protective rubber holster



NEW! Xtreme Probe Series with Alumina
wear face for rough or hot surfaces



Flip Display enables right-side-up viewing



Microprobe series for small parts
and hard-to-reach areas

PosiSoft® ... **FREE SOLUTIONS** for viewing, analyzing and reporting data:

PosiSoft USB Drive Connect to a PC/Mac using the
supplied USB cable to access and print stored
readings, graphs, photos, notes and screen
captures. No software or internet connection required.



PosiSoft.net A web-based
application offering secure centralized
management of PosiTector readings.
Access your data from any web-
connected device.



PosiSoft Software

Newly updated version 3.0 desktop
software for PC or Mac. Available as
a free download.

PosiSoft Mobile

Access readings, graphs, capture photos and update
annotations using WiFi enabled devices such as tablets,
smart phones and computers. (Advanced models only)



Available on the
App Store



PosiTector bodies
accept all 6000,
200, RTR, SPG, DPM
and UTG probes



PosiTector® 6000 Series ORDERING GUIDE		Our most popular Removable Built-in and Regular Separate probe models				Ideal for anodized aluminum			Microprobes – Our smallest probes for small parts or hard-to-reach areas			Removable Built-in and Separate probes for thick protective coatings; epoxy, rubber, intumescent fireproofing and more					
FERROUS PROBES	Standard	F1	FS1	FXS1*	FRS1				F0S1	F4S1	F90S1	FT1	FTS1	FHXS1*	FKS1	FLS1	
	Advanced	F3	FS3	FXS3*	FRS3				F0S3	F4S3	F90S3	FT3	FTS3	FHXS3*	FKS3	FLS3	
NON-FERROUS PROBES	Standard	N1	NS1		NRS1	NAS1	N0S1	N4S1	N90S1						NKS1		
	Advanced	N3	NS3		NRS3	NAS3	N0S3	N4S3	N90S3						NKS3		
COMBINATION PROBES	Standard	FN1	FNS1		FNRS1								FNTS1				FNGS1**
	Advanced	FN3	FNS3		FNRS3								FNTS3				FNGS3**
Range		0–60 mils 0–1500 µm				Ferrous: 0–45 mils and 0–1150 µm Non-Ferrous: 0–25 mils and 0–625 µm				0–250 mils 0–6 mm		0–400 mils 0–10,000 µm		0–500 mils 0–13 mm		0–1.5 inches 0–38 mm	0–2.5 inches 0–63.5 mm
Accuracy[†]		±(0.05 mil+1%) 0–2 mils ±(0.1 mil+1%) >2 mils ±(1 µm+1%) 0–50 µm ±(2 µm+1%) >50 µm				±(0.02 mil+1%) 0–4 mils ±(0.1 mil+3%) >4 mils ±(0.5 µm+1%) 0–100 µm ±(2 µm+3%) >100 µm				±(0.5 mil+1%) 0–100 mils ±(0.5 mil+3%) >100 mils ±(0.01 mm+1%) 0–2.5 mm ±(0.01 mm+3%) >2.5 mm		±(0.1 mil+3%) ±(2 µm+3%)		±(1 mil+3%) ±(0.02 mm+3%)		±(0.01 in.+3%) ±(0.2 mm+3%)	
Matching DeFelsko Calibration Standards		STDS1 STDA1				STDS2 STDA2				STDP1		STDP7	STDP5	STDP8	STDP8 (included)		

Ferrous probes measure non-magnetic coatings on ferrous metals. **Non-Ferrous probes** measure non-conductive coatings on non-ferrous metals. ***Xtreme probe series** with Alumina wear face. Ideal for rough or hot surfaces up to 250° C (500° F). ****FNGS probe** measures non-conductive coatings on all metals. [†]Accuracies are stated as a fixed value plus a percentage of the gage's actual reading.

Probe Details

(All probe details can be found online at www.defelsko.com/p6000/probes)

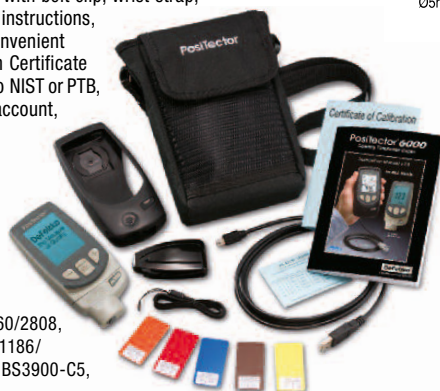
REMOVABLE BUILT-IN	REGULAR & FTS	90° REGULAR	F0S & N0S WITH ADAPTER	F45S & N45S	F90S & N90S

ALL GAGES COME COMPLETE with precision plastic shim(s), protective rubber holster with belt clip, wrist strap, 3 AAA alkaline batteries, instructions, protective lens shield, convenient carrying case, Long Form Certificate of Calibration traceable to NIST or PTB, USB cable, PosiSoft.net account, two (2) year warranty.

SIZE: 137 x 61 x 28 mm
(5.4" x 2.4" x 1.1")

WEIGHT: 140 g (4.9 oz.)
without batteries

Conforms to ISO 2178/2360/2808,
ISO 19840, ASTM B499/D1186/
D1400/D7091/E376/G12, BS3900-C5,
SSPC-PA2 and others



Options

Coating Thickness Standards
to fulfill both ISO and in-house
quality control requirements

Extended Cables for under-
water or remote measuring.
Specify length when ordering.



**For a complete list of product features and
available options visit www.defelsko.com**

DeFelsko®
The Measure of Quality

DeFelsko Corporation • 802 Proctor Ave. • Ogdensburg, New York 13669-2205 USA
Toll Free 1-800-448-3835 • Tel: +1-315-393-4450 • Fax: +1-315-393-8471
techsale@defelsko.com • www.defelsko.com

Made in U.S.A.

© DeFelsko Corporation USA 2015. All Rights Reserved. Technical Data subject to change without notice. • Printed in USA • P6000.v.LW/W1501

PosiTector® *SmartLink*

Wirelessly connect PosiTector probes to your smart device



A Smart New Way to Measure:
PosiTector SmartLink and free mobile app turns your cell phone or tablet into a virtual PosiTector gage



Android app
coming soon

Made for
iPod iPhone iPad

DeFelsko®

The Measure of Quality

PosiTector® SmartLink

Wirelessly connect PosiTector probes to your smart device.

A Smart New Way to Measure

PosiTector SmartLink and free mobile app turns your cell phone or tablet into a virtual PosiTector gage

- Intuitive easy-to-use touch screen operation
- Every reading is instantly transmitted to your smart device
- Tri-color LED provides immediate feedback in dark and noisy environments
- Accepts coating thickness, environmental and surface profile probes
- Lightweight and compact design—uses one AAA battery

Unprecedented Mobile Integration (No internet connection required)

Take full advantage of the simplicity and utility of your smart device including touch screen, keyboard, microphone, camera, email, WiFi, Bluetooth, cellular, dictation tools and more

- Auto-pairing Bluetooth Low Energy connection works up to 10m away (30 feet)
- Create and save professional PDF reports quickly and easily
- Add images to individual readings or batches using the camera or image library
- Rename batches and add notes using the keyboard or microphone
- Real time graphing and statistical analysis with the swipe of a finger

Seamless Online Integration with an Internet Connection

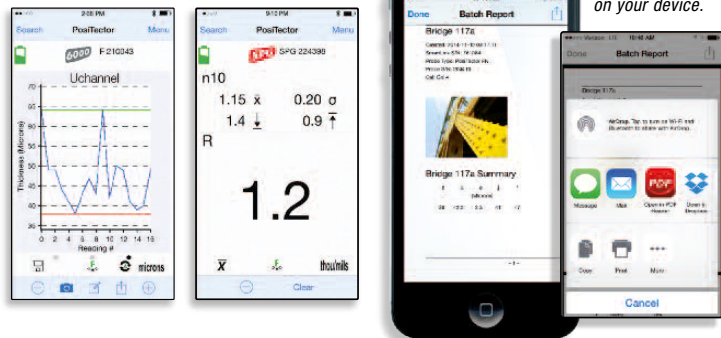
Share, backup, synchronize and report measurement data via email, apps and the cloud

- AutoSync mode instantly backs up every reading to the cloud—No account required!
- Restore data from the cloud to any smart device—add readings, notes and images
- Live synchronization with your PosiSoft.net account
- Share professional PDF reports and CSV data instantly via email, Dropbox, AirPrint™ or other applications on your device



PosiTector SmartLink instantly transmits every reading to your smart device.

Share professional PDF reports and CSV data instantly via email, Dropbox, AirPrint™ or other applications on your device.



Coating Thickness



Surface Profile



Surface Profile



Environmental Conditions

PosiTector SmartLink accepts PosiTector 6000, RTR-H, SPG and DPM probes easily converting to a coating thickness gage, surface profile gage or dew point meter.

COMES COMPLETE with SmartLink, free PosiTector App, AAA battery, wrist strap, instructions, two (2) year warranty. Probes purchased separately.

DeFelsko®
The Measure of Quality

DeFelsko Corporation • 802 Proctor Ave. • Ogdensburg, New York 13669-2205 USA
Toll Free 1-800-448-3835 • Tel: +1-315-393-4450 • Fax: +1-315-393-8471
techsale@defelsko.com • www.defelsko.com

Made in U.S.A.

©DeFelsko Corporation USA 2015. All Rights Reserved. Technical Data subject to change without notice. • Printed in USA • PSL.v.LW/W1501

Learn more at www.DeFelsko.com/PosiSoft

PosiSoft® Solutions

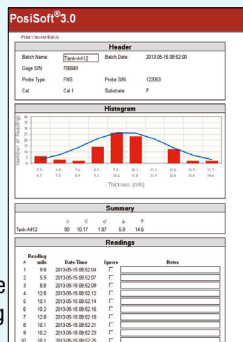
Suite of Software

The PosiSoft suite of software solutions offers 4 FREE ways to view and report your data, ranging from dedicated desktop software for PC and Mac computers to cloud-based PosiSoft.net.

PosiSoft® 3.0 Desktop Software

Newly updated version 3.0 desktop software for PC or Mac computers

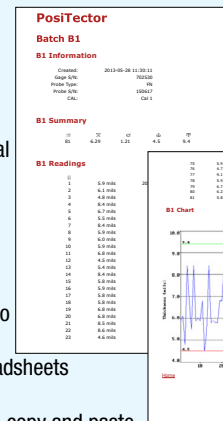
- Import (download) measurement data via USB (all gages) or WiFi (PosiTector Advanced models only)
- Customize reports by adding pictures, logos, screen captures, notes and more
- Measurement data is copied (imported) from the instrument to a user selectable location — ideal for storing and sharing data on a network or cloud-drive
- Create custom layouts using a simple drag and drop Template Design toolbox; save layouts for future use
- Downloaded data is stored in comma-separated text files which can easily be imported into supporting applications such as documents, spreadsheets and databases



PosiSoft® USB Drive

Access your PosiTector as a flash drive

- View and print readings and graphs using universal PC/Mac web browsers or file explorers
- Measurement data is stored in comma-separated text files which can easily be imported into supporting applications such as documents, spreadsheets and databases
- Simple file management - copy and paste data from the PosiTector to a local folder on your computer, network or cloud-drive



Preformatted HTML reports are stored in the gage.

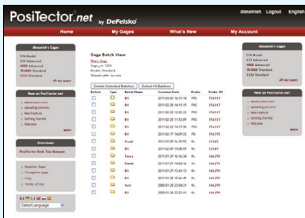
PosiSoft®.net (formerly PosiTector.net)

A cloud-based application offering secure centralized management of PosiTector readings. Access your data from any web-connected device anywhere in the world.

- Synchronize measurement data when connected via USB, Bluetooth or WiFi wireless technology
- Generate reports with graphs, annotations and images
- Share measurement data with authorized users via a secure login from any computer or web-enabled device
- Export data to popular formats such as XML, .CSV (comma-separated values), and CQATK for further analysis
- Securely stores data in the cloud
- Synchronize images and batch notes to your PosiTector
- Compatible with PosiTector SPG/DPM/6000/200/UTG Standard & Advanced instruments
- Internet connection required



Synchronize, Share, Report, Export, Archive



PosiSoft® Mobile

Gage-based software application featured in all PosiTector Advanced instruments. Access readings, graphs, capture photos and update notations using WiFi enabled devices such as tablets, smart phones and computers



- Browse stored measurement data including notes, images, statistics and charts
- Update batch names/notes using your mobile device's keyboard
- Insert images directly into gage batches using your mobile device's camera or image library
- Remotely view the live display of a working PosiTector
- Email data as PDF reports or .CSV comma-separated text files
- Accessible from any WiFi enabled computer or smart device using a standard web browser including PC/Mac, Windows Phone/Mobile, Blackberry, Android, Apple iOS and more

PosiSoft Mobile Manager is a discovery tool that searches your local area WiFi network for WiFi enabled PosiTector Advanced instruments.

- Available for Apple iOS and Android users



DeFelsko Corporation
802 Proctor Ave., Ogdensburg, New York 13669-2205 USA
Toll Free: 1-800-448-3835 Tel: +1-315-393-4450 Fax: +1-315-393-8471
techsale@defelsko.com www.defelsko.com

©DeFelsko Corporation USA 2013. All Rights Reserved. Technical Data subject to change without notice. Printed in USA. PSoft.v.LW/W1306

