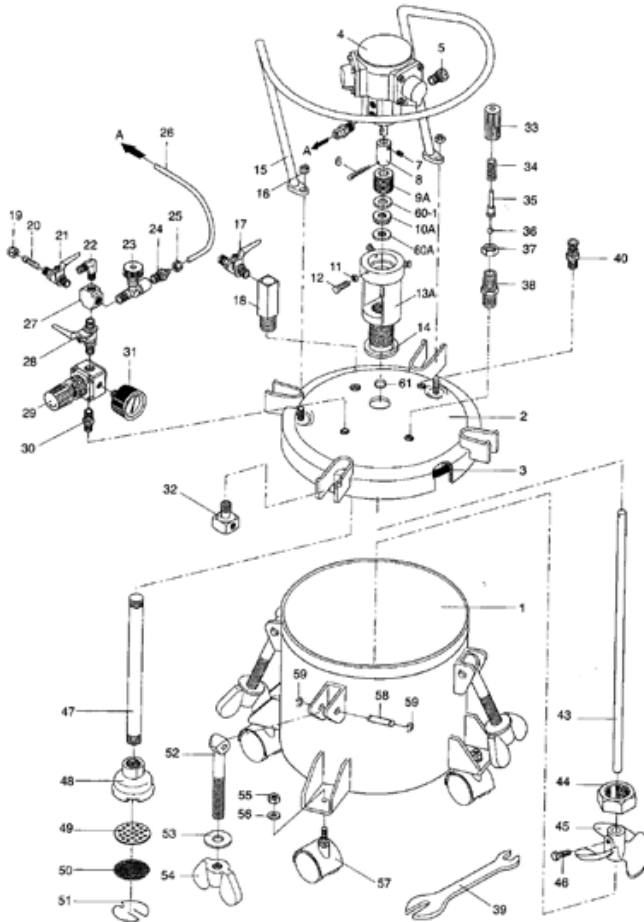


GNG Pressure Pot - 10 Litre / Air Agitation

02210-A
WORKQUIP 10L AIR AGITATION PRESSURE POT



<u>3</u>	02210-04	POT GASKET
<u>4</u>	02400	AIR AGITATOR MOTOR
<u>8</u>	X02210A-08	CONNECTING BUSH
<u>9A</u>	X02210A-09N	CENTERING GUIDE
<u>10A</u>	X02210A-10A	SHAFT SEAL CUP
<u>13A</u>	X02210A-13A	MOTOR BASE
<u>14</u>	X02210M-12	SEAL RING - SHAFT BASE
<u>15</u>	X02210M-14	PARTS GUARD
<u>17</u>	X02220M-35	MATERIAL OUTLET COCK
<u>18</u>	X02210-28N	MATERIAL OUTLET
<u>21</u>	06139	AIR COCK (1/4)
<u>22</u>	X02210A-22	ELBOW AIR INLET
<u>23</u>	X02210A-23	AIR VALVE TAP
<u>27</u>	X02210A-27	4-WAY BLOCK
<u>28</u>	06139	AIR COCK (1/4)
<u>29</u>	X02210-14	REGULATOR
<u>30</u>	X02210-18A	AIR FLOW NIPPLE
<u>31</u>	X02210-15	REAR GUAGE 100PSI
<u>32</u>	X02210M-23	AIR FLOW GUIDE
<u>33-38</u>	X02210-20-25	SAFETY VALVE ASSEMBLY
<u>40</u>	X02210-26-28	RELEASE VALVE ASSEMBLY
<u>43</u>	X02210A-43	AGITATING ROD
	X02210A-43S	AGITATING ROD (S/STEEL)
<u>44</u>	X02210M-34	HEXAGON NUT
<u>45-46</u>	X02220A-47	AGITATING PROPELLER BOLT
<u>47</u>	X02210-05N	FLUID TUBE
	X02210-05NS	FLUID TUBE (S/STEEL)
<u>48</u>	X02210-06	FILTER ASSEMBLY
<u>49</u>	X02210-07	FILTER BASE PLATE
<u>50</u>	X02210-08	MATERIAL FILTER
<u>51</u>	X02210-09	SNAP RING
<u>52</u>	X02210-10	SWING BOLT
<u>53</u>	X02210-11	WASHER
<u>54</u>	X02210-12	THUMB NUT
<u>55-57</u>	X02210-13	WHEEL ASSEMBLY
<u>58</u>	X02210-31	COTTOR PIN
<u>59</u>	X02210-32	RETAINING CLIP
<u>60A</u>	X02210A-60A	SEAL RING
<u>60.1</u>	X02210A-60-1	UPPER SEAL RING
<u>61</u>	X02210A-61	SHAFT O'RING
	02215	POT LINER