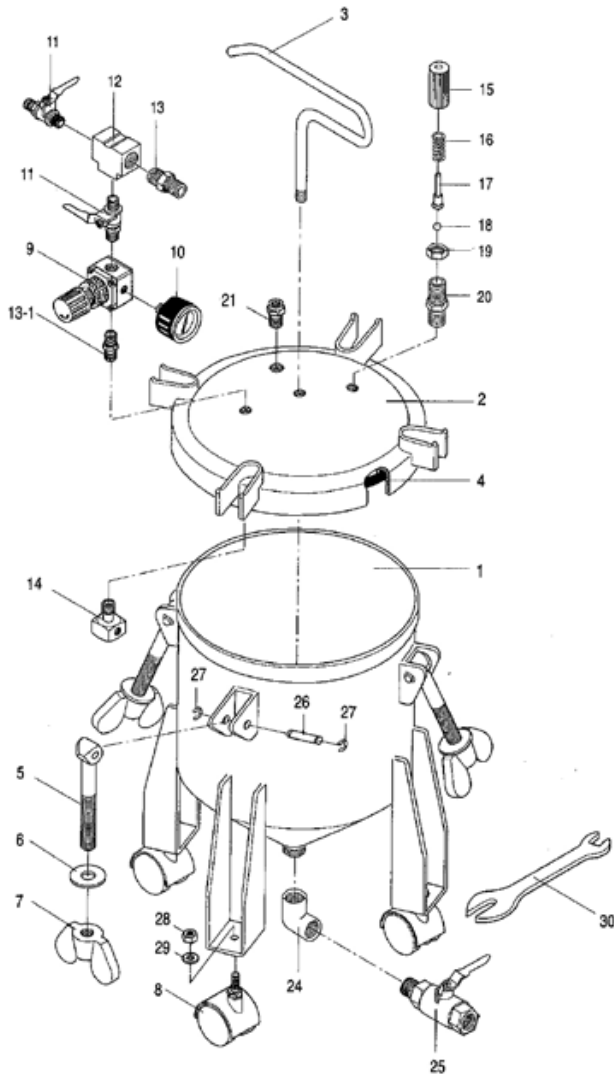


GNG Pressure Pot - 10 Litre / Bottom Outlet

02210-BE

WORKQUIP 10L BOTTOM OUTLET PRESSURE POT



<u>3</u>	X02210-03	HANDLE
<u>4</u>	02210-04	POT GASKET
<u>5</u>	X02210-10	SWING BOLT
<u>6</u>	X02210-11	WASHER
<u>7</u>	X02210-12	THUMB NUT
<u>8/28/29</u>	X02210-13	WHEEL ASSEMBLY
<u>9</u>	X02210-14	REGULATOR
<u>10</u>	X02210-15	REAR GAUGE 100PSI
<u>11</u>	06139	AIR COCK (1/4)
<u>12</u>	X02210-17	TEE MANIFOLD
<u>13</u>	X02210-18	1/4 X 1/4 NIPPLE
<u>13A</u>	X02210-18A	AIR FLOW NIPPLE
<u>14</u>	X02210M-23	AIR FLOW GUIDE
<u>15-20</u>	X02210-20-25	SAFETY VALVE ASSEMBLY
<u>21</u>	X02210-26-28	RELEASE VALVE ASSEMBLY
<u>24</u>	X02220BEM-45	ELBOW
<u>25</u>	X02220BEM-47	PAINT OUTLET COCK
<u>26</u>	X02210-31	COTTOR PIN
<u>27</u>	X02210-32	RETAINING CLIP
<u>30</u>	X02210-34	SPANNER