



CLEMCO
The Performance
System

Technical Data Sheet

Note: For safe, efficient blasting, read and follow the owner's manual and seek training for everyone who will use this equipment.

Purpose

The Quantum precisely meters all common blast abrasives. This allows the user to switch to the appropriate abrasive for the job, without changing the metering valve. The Quantum is standard on all Contractor Blast Machines.

Requirements for Operation

- Works with all common blast media.
- For maximum productivity, use clean, dry, properly-graded and screened abrasive.

Description of Operation

The quantum is operated by a knob that controls the movement of a flat metering plate placed horizontally across the opening of the bottom of the blast machine. Abrasive is gravity fed from the blast machine cone onto the top of the metering plate. Placing the metering plate horizontally beneath the vertical flow of abrasive keeps the area above the plate filled with abrasive. This ensures uniform abrasive flow, whether the valve is partially or fully open.

Description

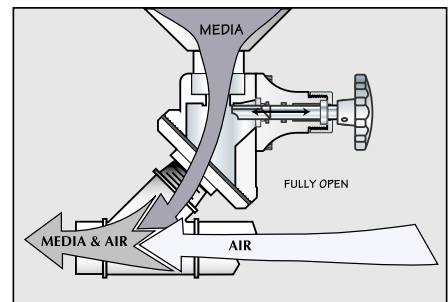
Quantum Manual Abrasive Metering Valve is an easily adjustable, manually operated, abrasive metering valve which maintains precise settings from fully closed to fully open. It can be used with all common abrasives.

Quantum Manual Abrasive Metering Valve

Stock No. 22845



Quantum Manual Abrasive Metering Valve



Quantum in open position

Advantages

- Easily serviced without removing piping
- Cast aluminum body resists corrosion
- Accurately meters all common abrasives
- One-hand operation
 - Takes 8 to 9 turns from closed to fully open
- Releasing the knob at any setting maintains the steady flow of abrasive
- Wear resistant stainless steel metering plate

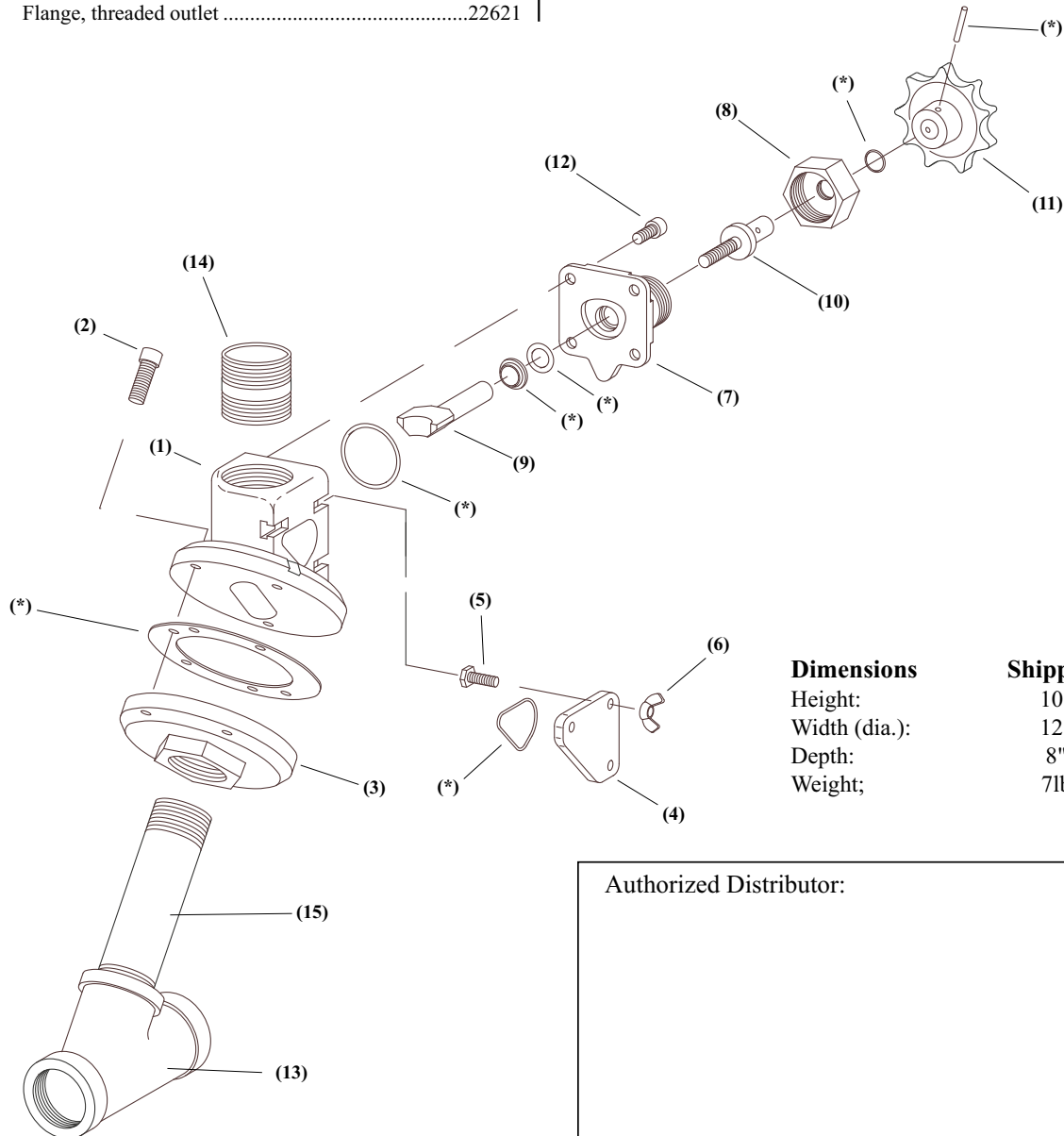
Related Clemco Literature

Description	Stock No.
Contractor Series Catalog.....	21385
Abrasive Blasting Safety Practices	22090
Blast Off 2	09294
Quantum Abrasive Metering Valve Owner's Manual	22565

Quantum Valve Replacement Parts

Item Description	Stock No.
(-) Quantum manual metering valve w/wye.....	22845
* Service kit, Quantum metering segment	22854
1. Upper body, flanged	21314
2. Screw, 3/8-NC x 1" socket head.....	22655
3. Flange, threaded outlet	22621

4. Inspection plate/cleanout cover	22620
5. Screw, 1/4-NC x 3/4" hex head cap.....	03052
6. Nut, 1/4-wing.....	03113
7. Housing, knob.....	22761
8. Nut, knob housing	22762
9. Metering plate and shaft	22763
10. Metering screw	22764
11. Knob, adjustment.....	22766
12. Screw, 5/16-NC x 3/4" socket head.....	22767
13. Wye, 1-1/4".....	01818
14. Nipple, 1-1/2" x 2" heavy wall	01840
15. Nipple, 1-1/4" x 5-1/2"	01874



Dimensions	Shipping
Height:	10"
Width (dia.):	12"
Depth:	8"
Weight:	7lb

Authorized Distributor:

ISO 9001:2008 certified. Clemco is committed to continuous product improvement. Specifications are subject to change without notice.

© 2013 Clemco Industries Corp. • One Cable Car Drive • Washington, MO 63090 • Phone (636) 239-4300 • Fax (636) 239-0788
Stock No. 21955 www.clemcoindustries.com 0400 • Rev. A, 03/13