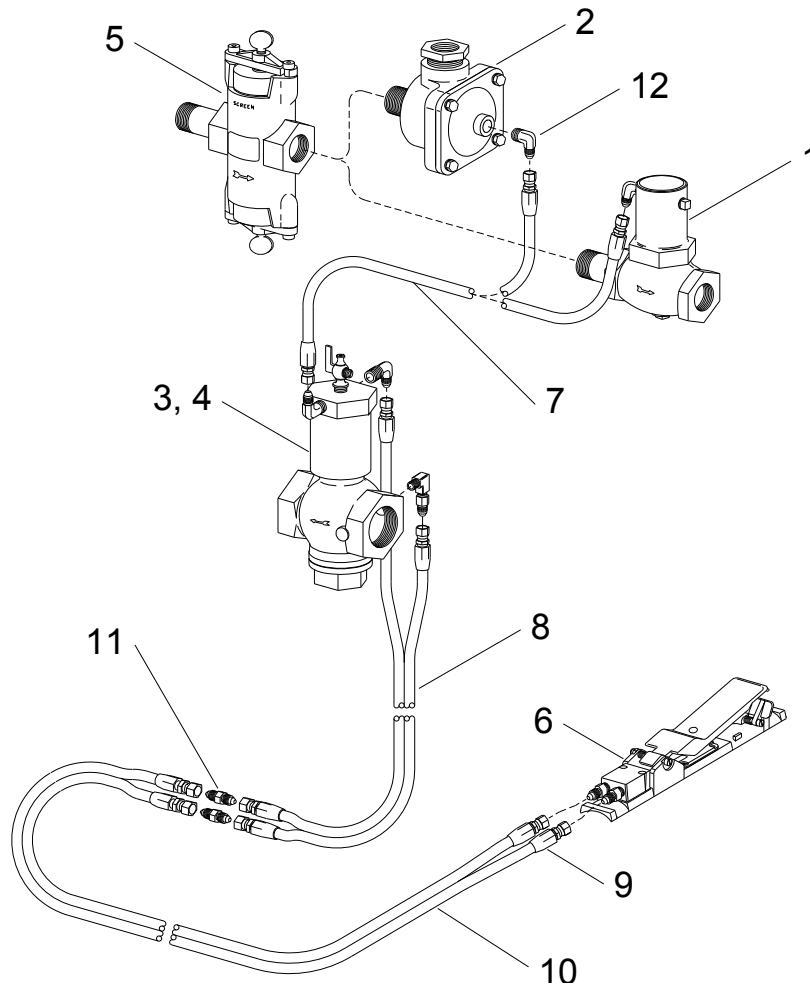


## TLR300 Remote Control System



No	Product Code	Item Description
-	0301-01936	TLR 300 Remote Control System
1	-	Outlet valve, 1" piston
2	-	Outlet valve, 1" diaphragm
3	-	Inlet valve 1"
4	-	Inlet valve 1-1/2"
5	-	Abrasive trap
6	-	RLX control handle
7	-	Hose, 3/16" x 18" coupled
8	-	Hose, 5' twinline coupled
9	-	Hose end, reusable
10	-	Hose, 50' twinline coupled
11	-	Union, twinline hose
12	-	Elbow, 1/4" NPT adaptor

Copyright 2016 Burwell Technologies